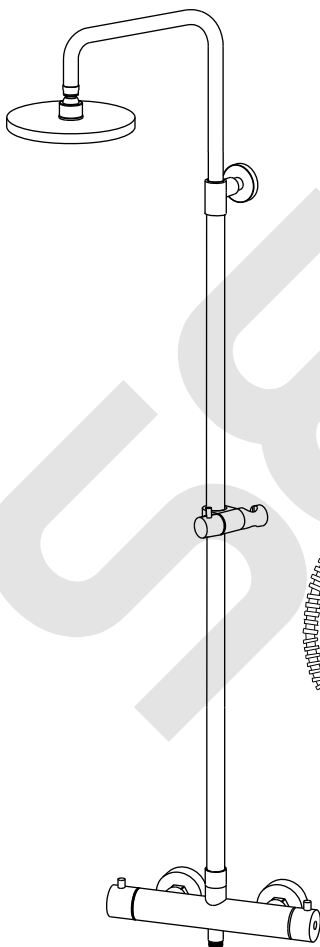


Let op !

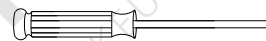
Waterleidingen eerst goed doorspoelen voordat u uw kraan aansluit !

Gebruik voor reiniging geen chloor, schuurmiddelen of andere agressieve schoonmaakmiddelen !

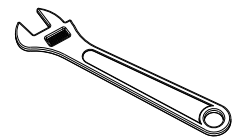
Controleer voor installatie of onderstaande onderdelen aanwezig zijn



Benodigd gereedschap



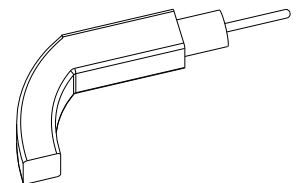
schroevendraaier



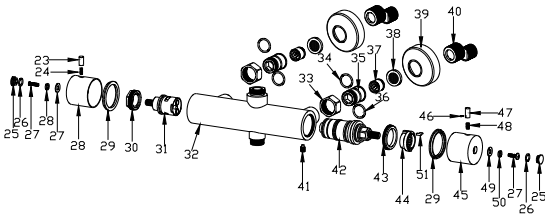
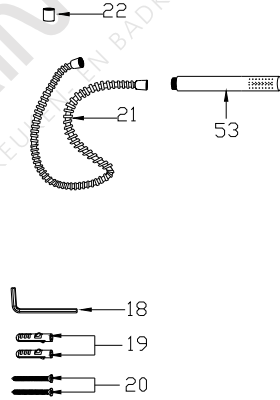
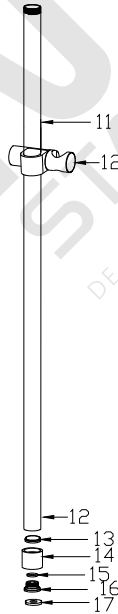
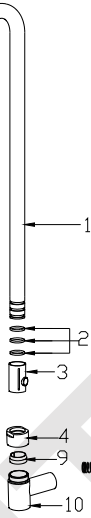
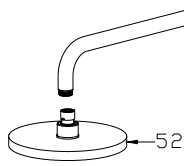
verstelbare
moersleutel



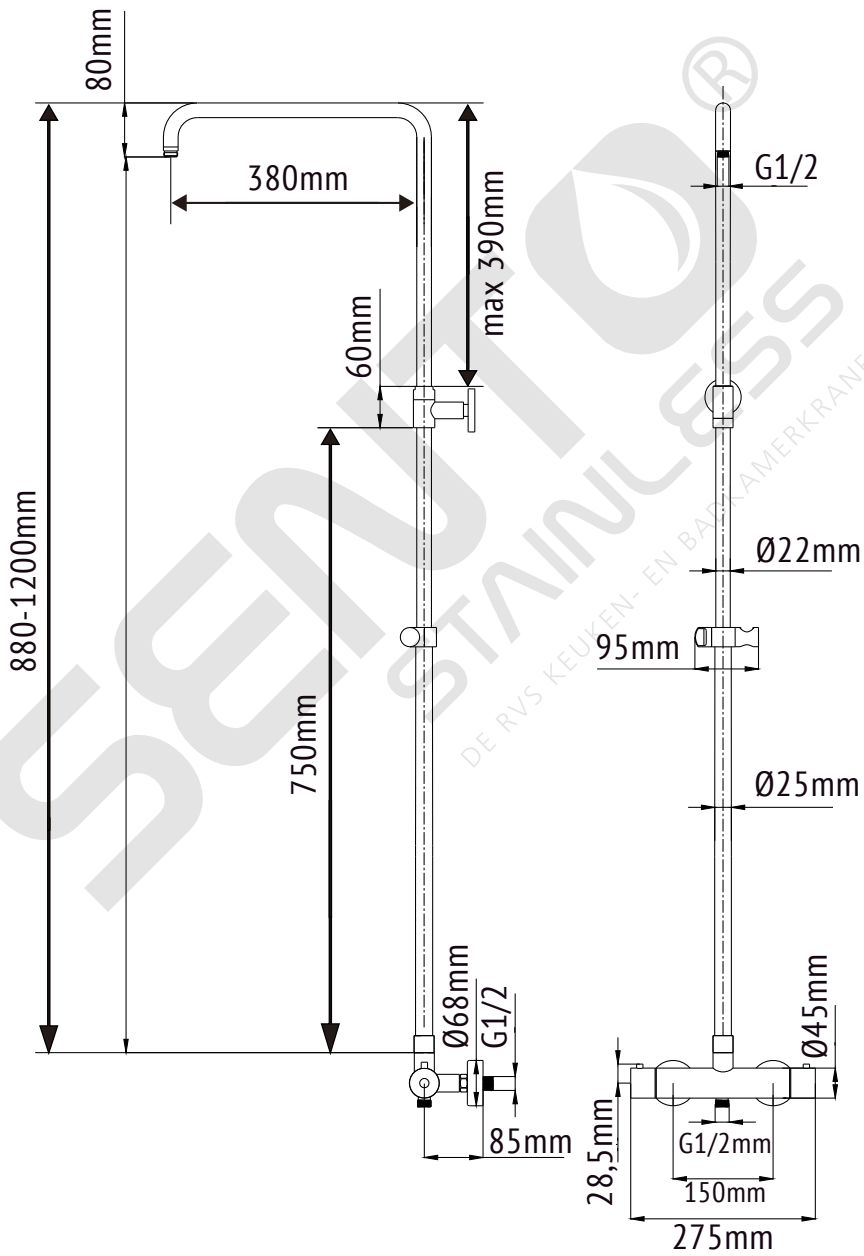
Inbussleutel
(meegeleverd)



Boormachine

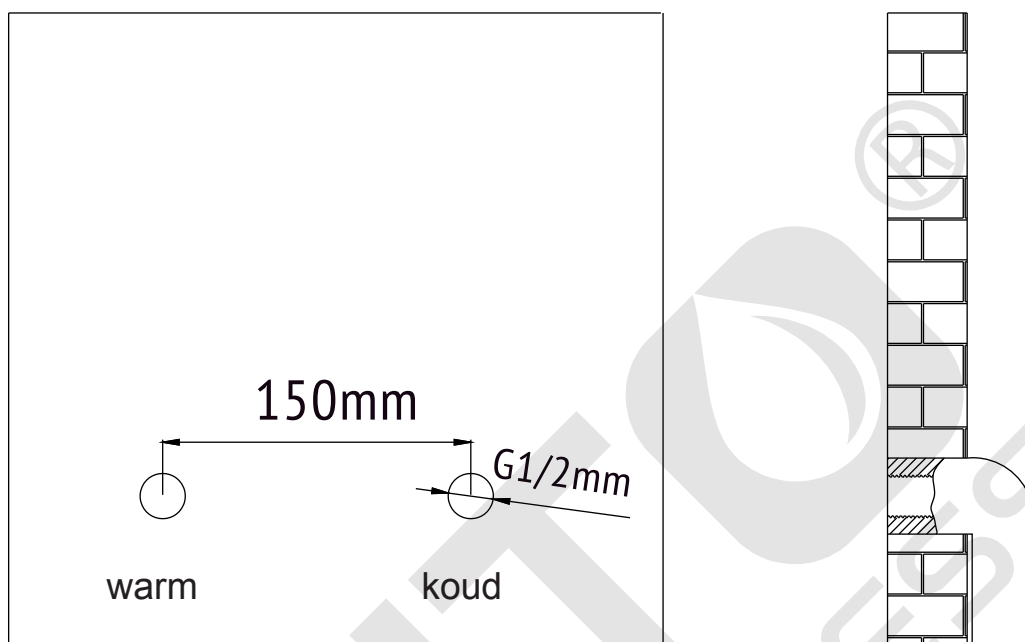


SEAMLESS®
DE RVS KEUPELEN BADKAMERKRANEN



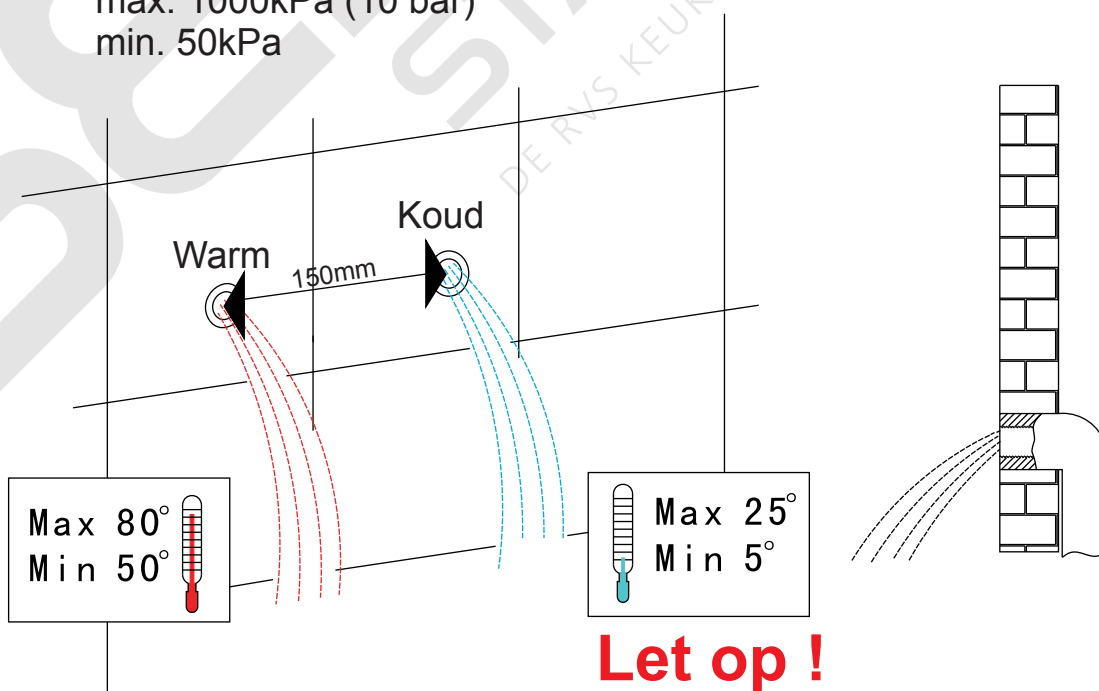
Installatie procedure

Stap 1



Stap 2

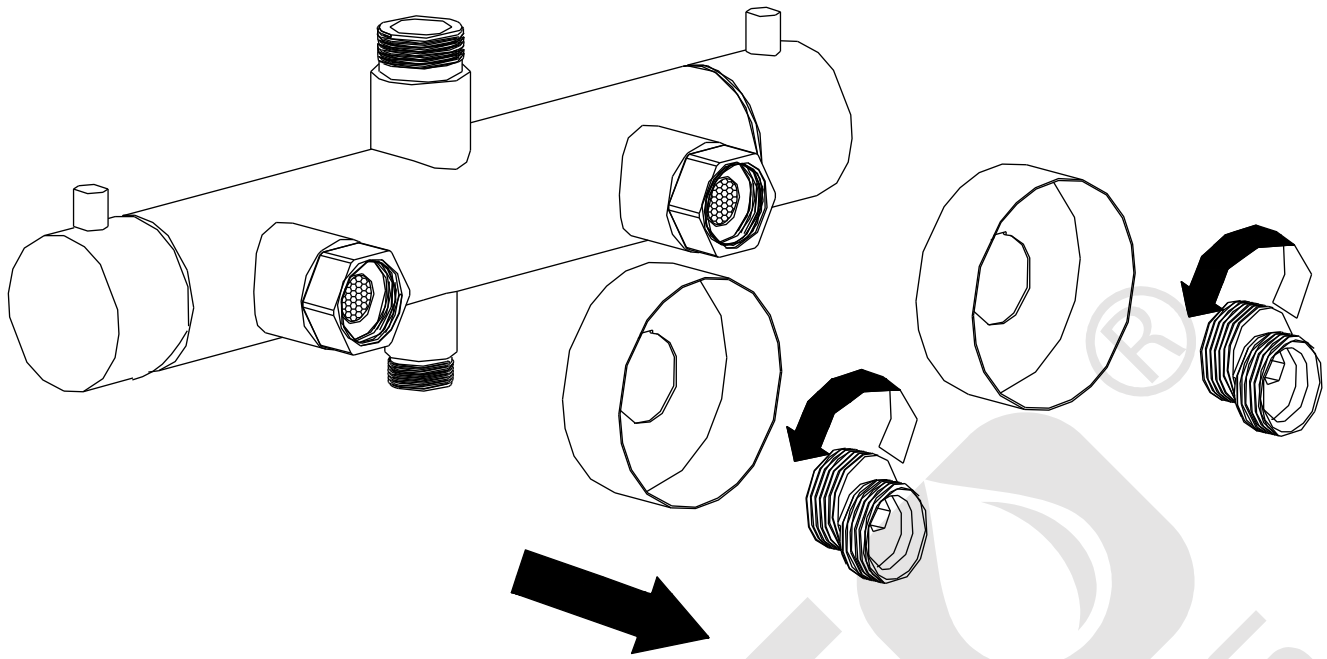
Centrum-tot-Centrum 150mm
max. 1000kPa (10 bar)
min. 50kPa



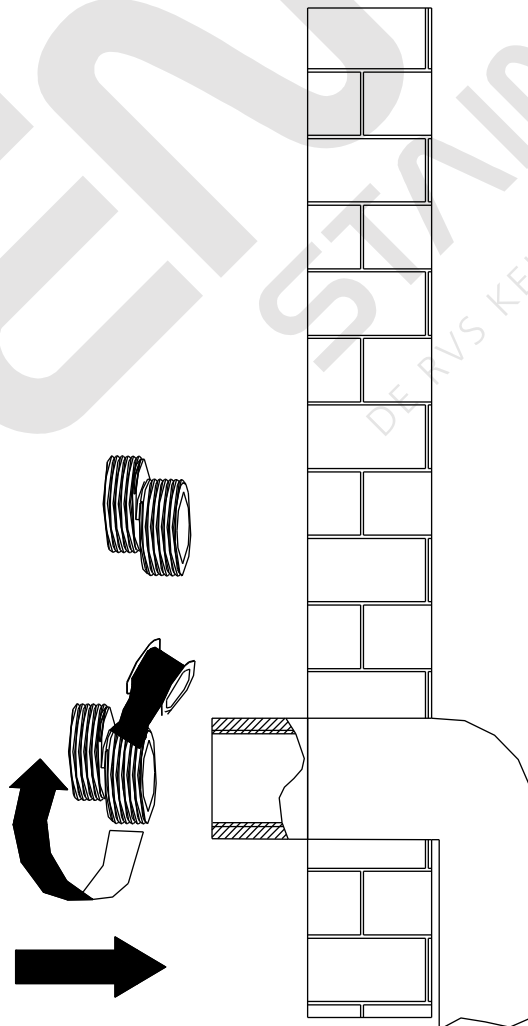
Let op !

Waterleidingen eerst goed doorspoelen
voordat u uw kraan aansluit

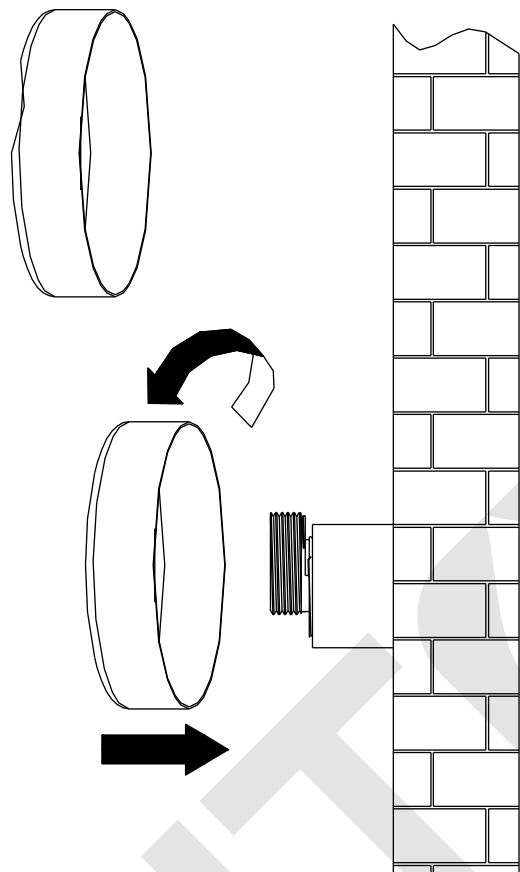
Stap 3



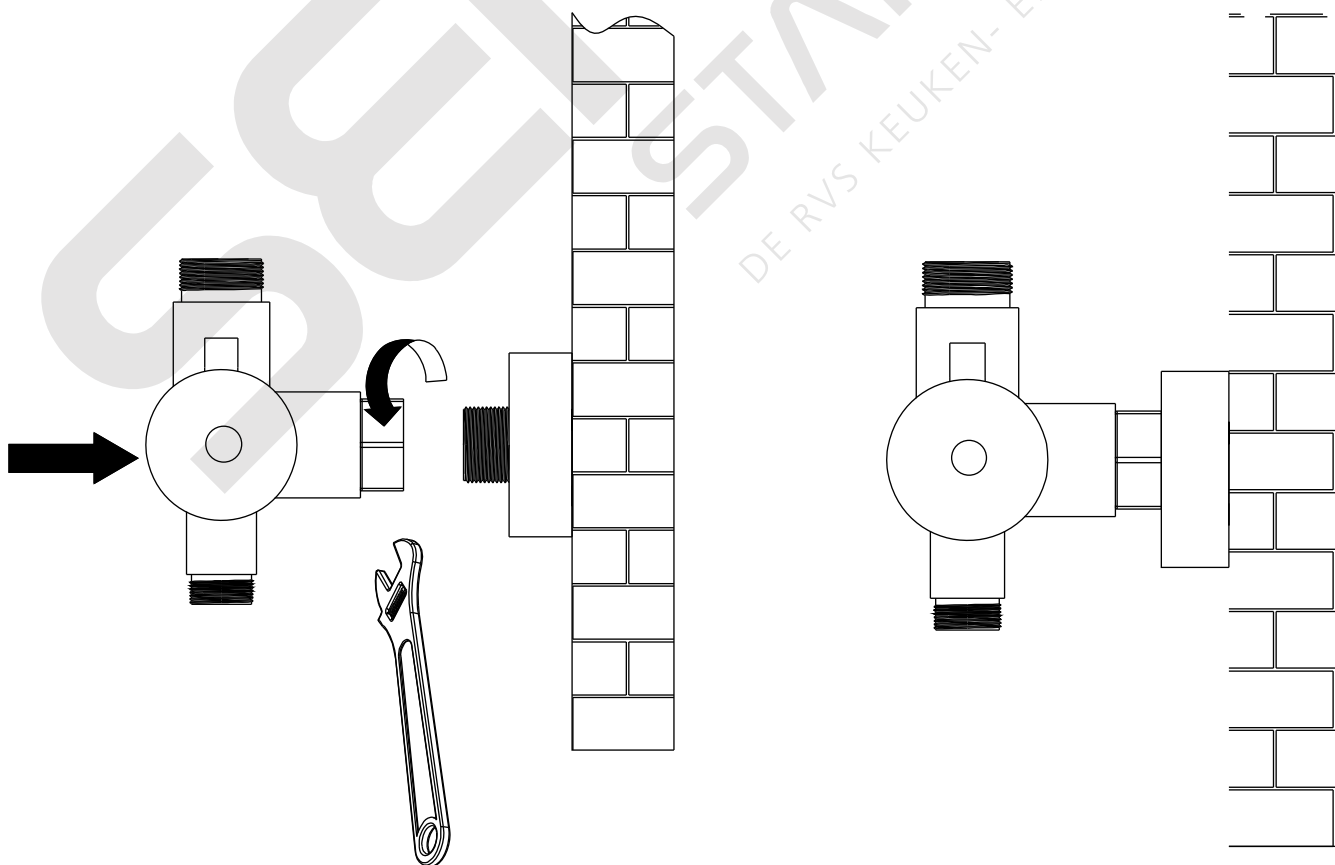
Stap 4



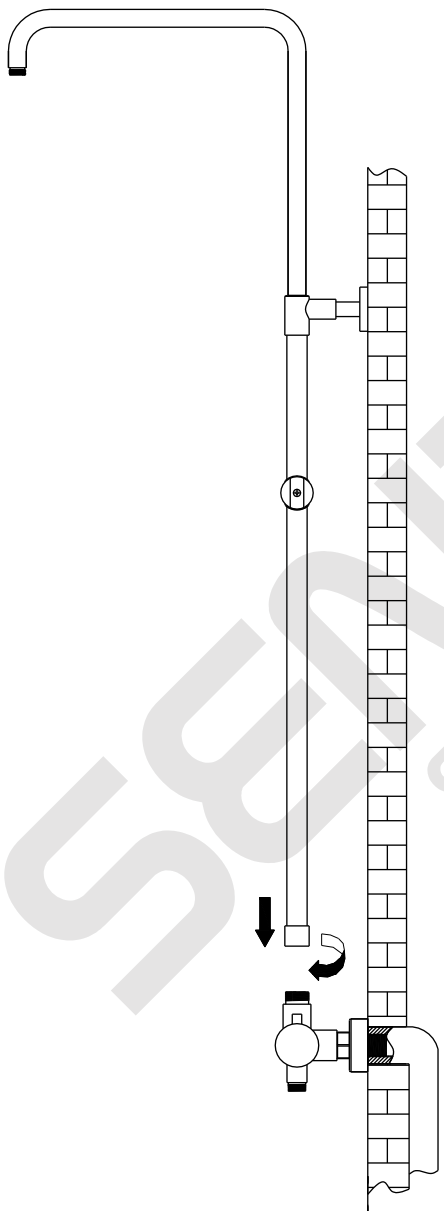
Stap 5



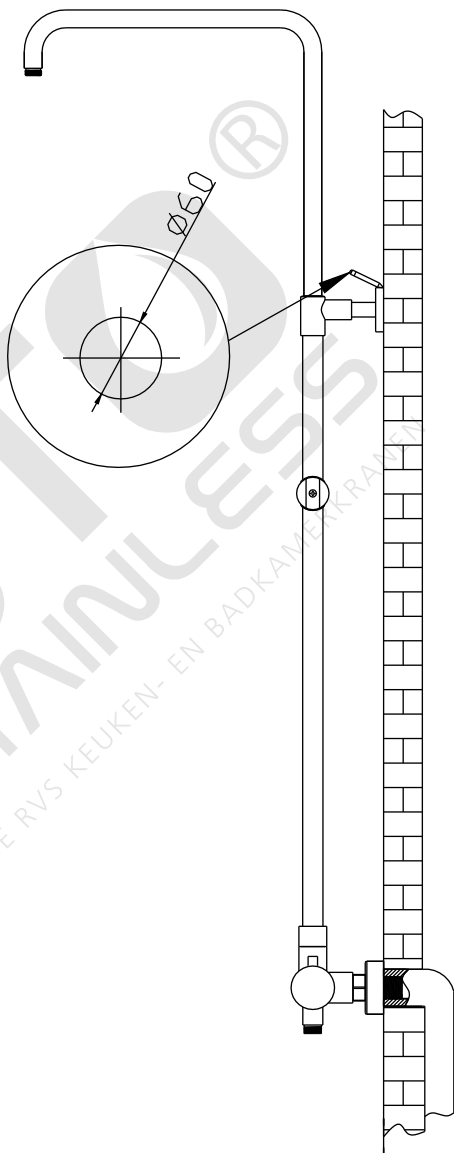
Stap 6



Stap 7

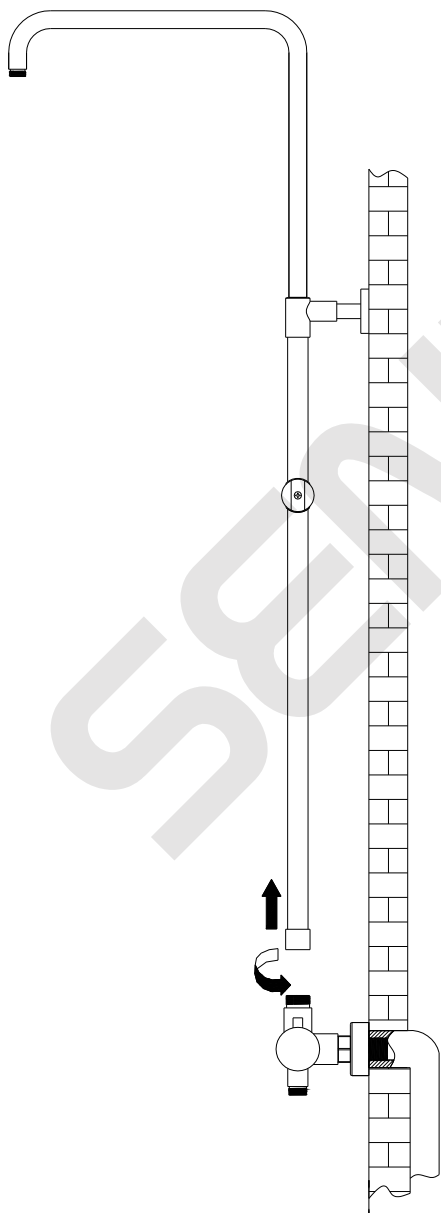


Stap 8

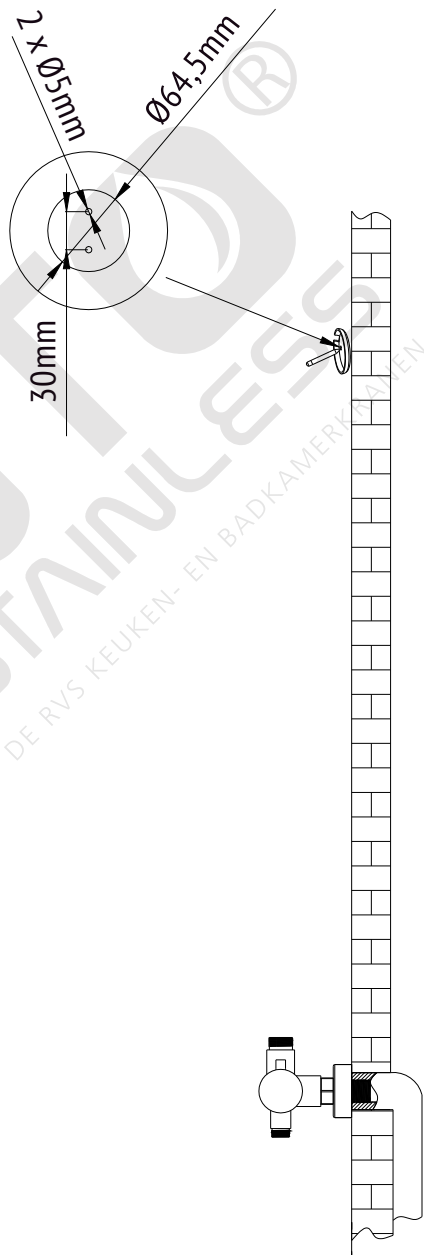


SAFETY STAINLESS
DE RVS KEUKEN- EN BADKAMERKRANTEN

Stap 9

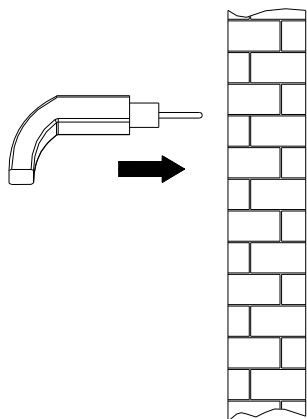


Stap 10

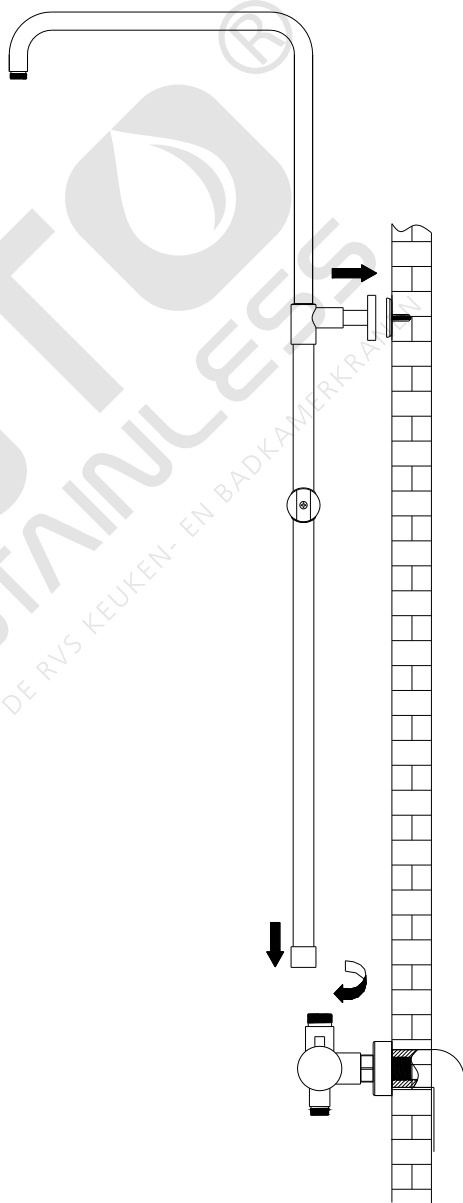


STAINLESS
DE RVS KEUKEN- EN BADKAMERKRAKEN

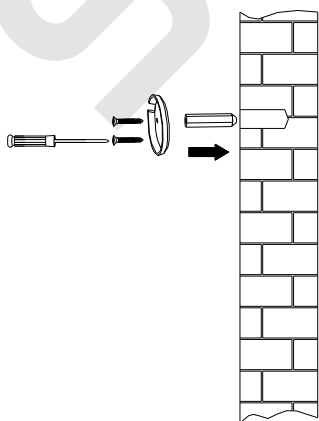
Stap 11



Stap 13

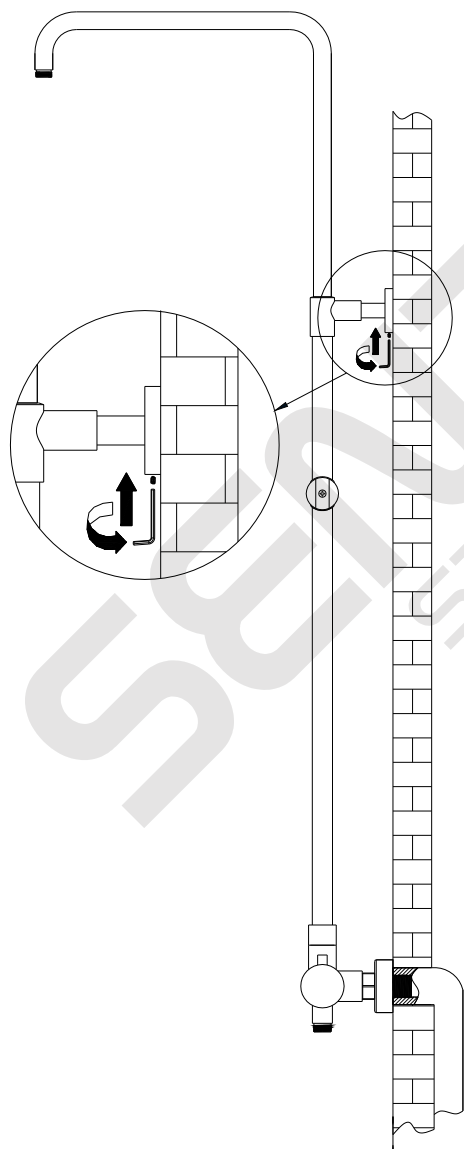


Stap 12

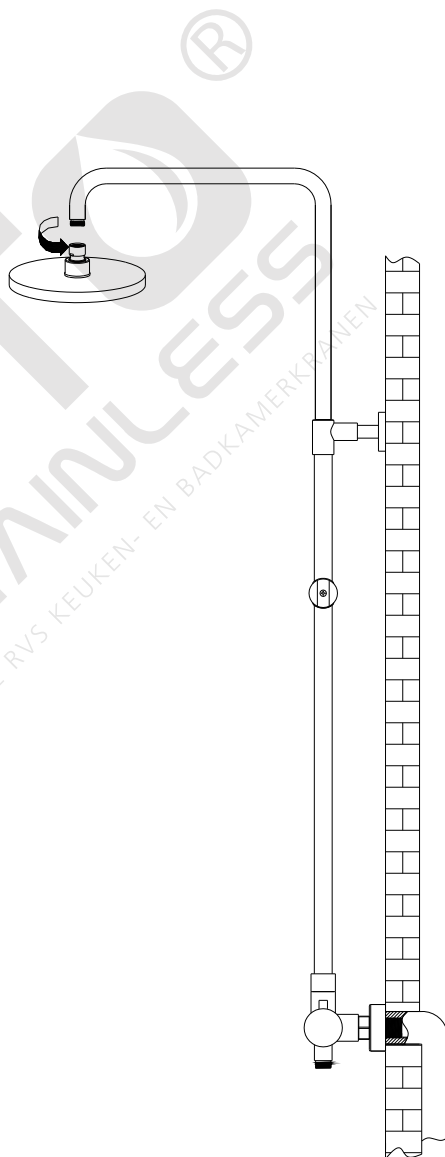


STAINLESS
DE RVS KEUKEN- EN BADKAMERKRAAN

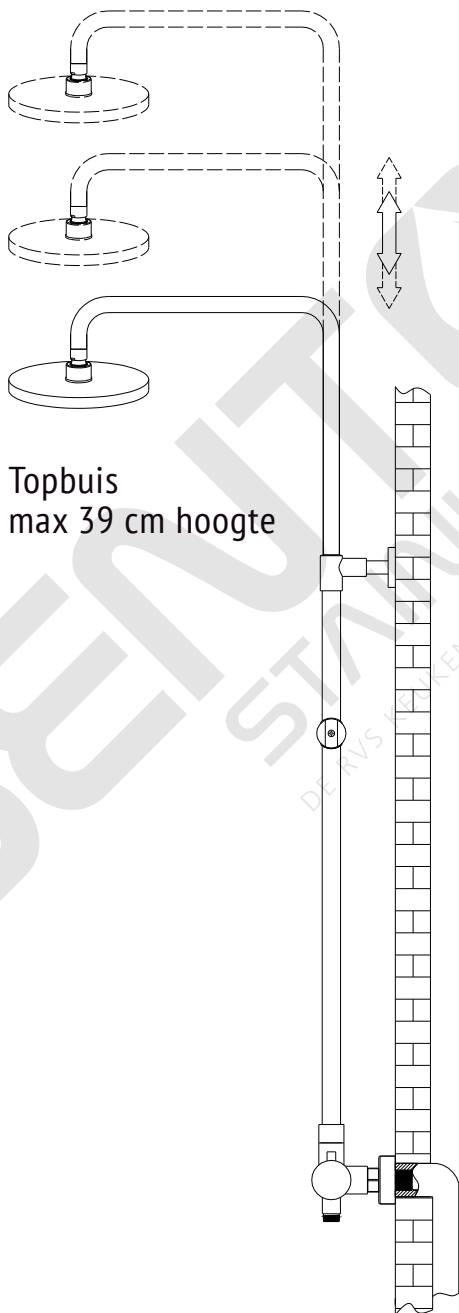
Stap 14



Stap 15



Stap 16



Stap 17



Let op !

Waterleidingen eerst goed doorspoelen
voordat u uw kraan aansluit

Stel de juiste temperatuur in
door de knop in te drukken
en de grote knop naar de juiste
temperatuur te draaien