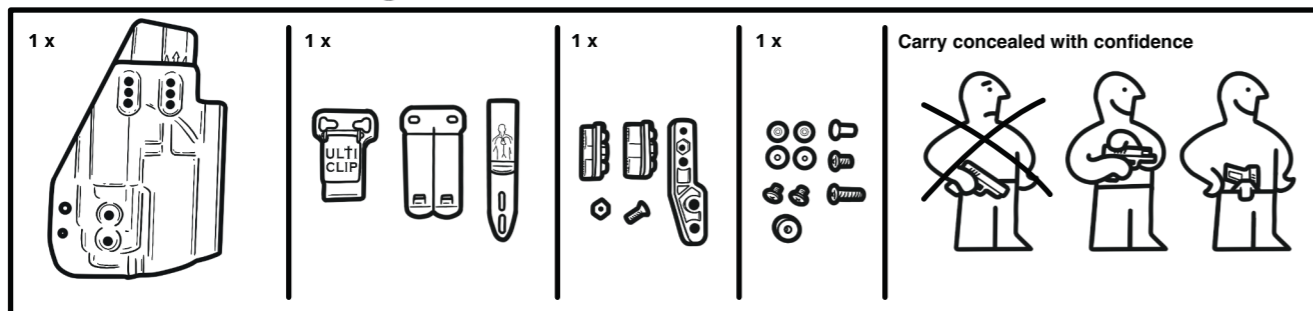
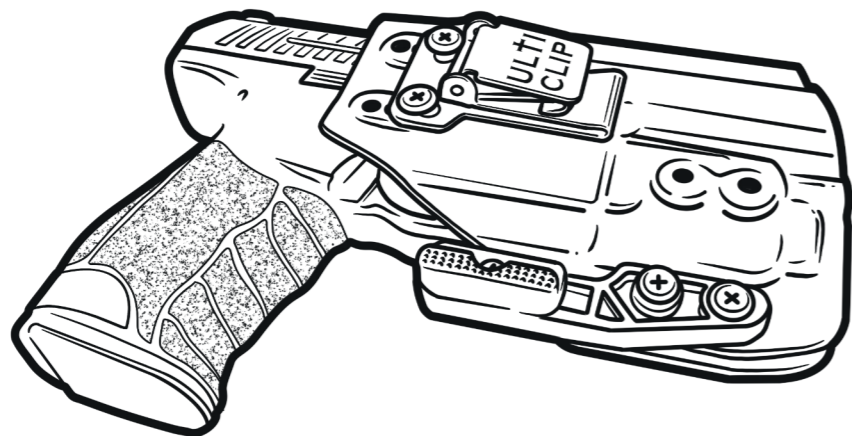


KYDEX HOSLTER NLD

Thermoplastic Concealed Carry Solutions



PHANTÖM ASSEMBLY INSTRUCTIONS



Make sure an adult handles this product with care. Make sure your firearm is cleared and safe before you test this product. Product is to be used with a flashlight, not as a flashlight. Do not use product for intercourse, or exchange product for sexual favors. Keep away from minors and democrats.
** Don't worry, all holsters come assembled.

www.khnld.com

CONTENTS

Who we are	5
Weapon holsters	7
Sidewinder	9
Phantom	11
Paveway	13
LowRider	15
LowRiderL2.....	17
Epstein Hanger	19
PTG.....	21
P1MC / P2MC.....	23
SIG MPX / HK MP7 Mag-Carrier	25
Rifle / HK417/ .338 Lapua Mag-Carrier	27
SHN Cuff-Carrier + LIPS Cuff-Carrier	29
BONOWI Baton Carrier	31
Sepura Carrier STP8000, SC2020 & SC2120	33
CAT Carrier / PSV Carrier	35



Who We Are

Kydex Holster NLD is a specialized division of MILE Gear, a premier provider of high-quality tactical equipment for military and law enforcement professionals across Europe.

Founded in 2010, MILE Gear was established in response to ongoing budget reductions affecting the Ministry of Defense and the National Police.

Our mission is to equip professionals with battle-tested, mission-ready gear that meets the highest standards of performance, durability and reliability.

The Expertise Behind Our Holsters

At the helm of Kydex Holster NLD is Lenn, a former Royal Netherlands Navy servicemember and a recognized authority in tactical holster design.

With firsthand operational experience, Lenn understands the critical importance of rapid accessibility, secure retention and ergonomic design in high-stakes environments.

His expertise has positioned Kydex Holster NLD as a trusted name among military personnel, law enforcement agencies and security professionals.

Why Professionals Choose Kydex Holster NLD

- **Combat-Proven Durability** – Developed and engineered in collaboration with Dutch SO-units to withstand extreme conditions
- **Precision Fit & Retention** – Custom-molded for all popular European service pistols (Glocks, H&Ks, Walther's, FN's, SIGs and other leading firearm brands), ensuring a secure, reliable draw with no unnecessary movement.
- **Designed with and for Law Enforcement & Military** – Developed with direct input from active-duty professionals, ensuring our holsters meet the rigorous demands of real-world scenarios.
- **Innovative Tactical Design** – Incorporating quick-draw technology, modular mounting options and advanced retention systems to enhance operational efficiency.



Weapon Holsters

We pride ourselves on delivering holsters that are made with quality, consistency and precision. We supply holsters for most duty pistols on the European market.

Through our dedication to our craft and as a testament to our commitment to design and manufacture high quality holsters for duty use - we have a outstanding partnership with HK, Glock, Walther and CZ in obtaining the original 3D CAD drawings for the best fit. This is achieved through tight tolerances and clever designs that provide a more secure platform and a better draw of the weapon system.



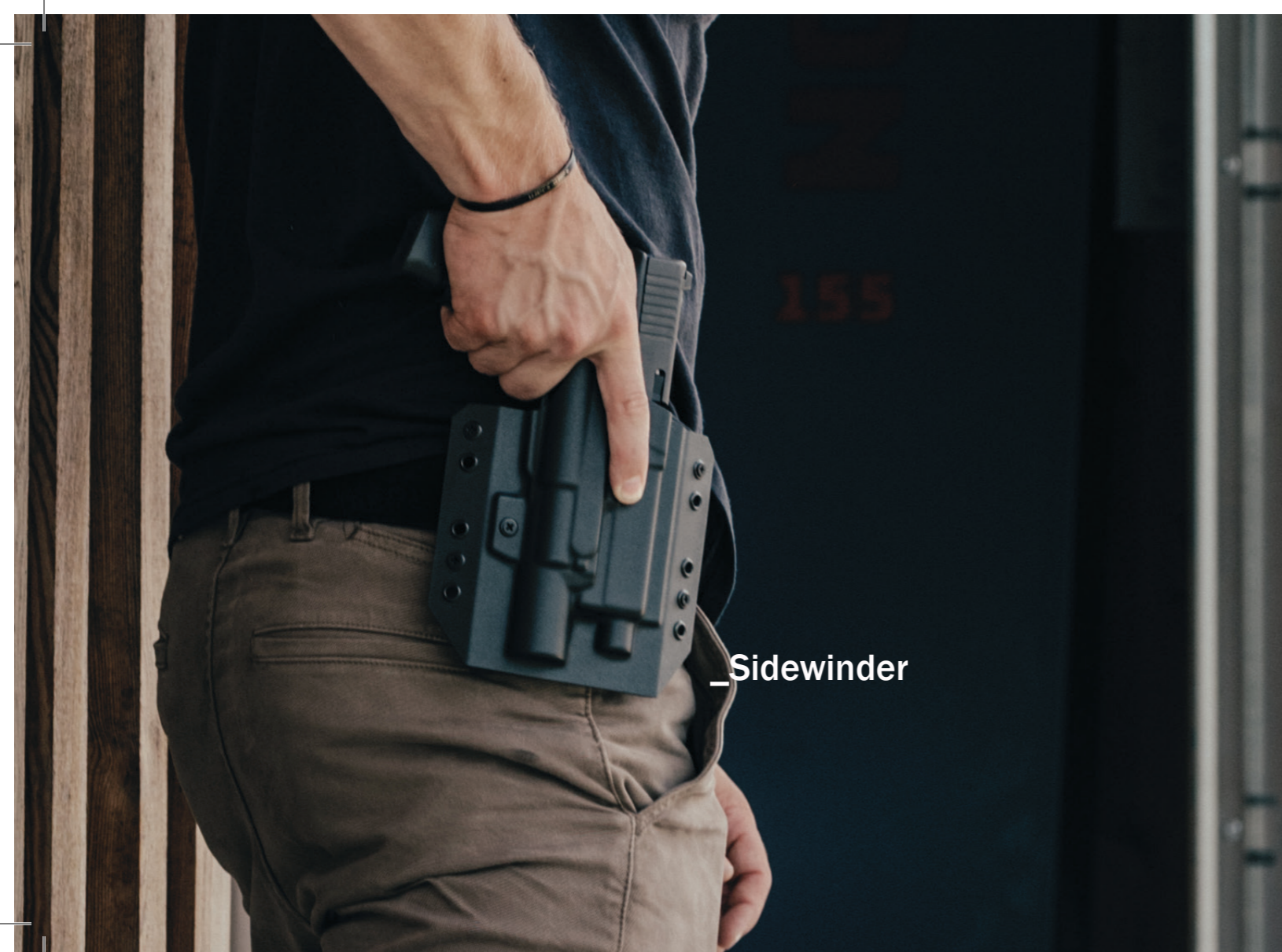
Weapon lights.

All our weapon holsters feature the option to add a weapon light. We mainly focus on the two biggest providers of weapon light systems for Military and Law enforcement in Europe which are Streamlight and Surefire.

Mounts

All our holsters and carries are customizable for a wide range of mounting solutions. We offer different mounting solutions industry leaders like BladeTech, Safariland and UltiClip.

Our Holsters and carriers are designed to be worn on a duty-, combat- and civilian belts - with comfort in mind without compromising quality and application.



Sidewinder

SIDEWINDER

Born from a real-world need for maximum durability, speed and precision, the Sidewinder is more than just an Outside the Waistband (OWB) holster.

Its sleek, ergonomic design ensures full adaptability, making it perfect for professionals who operate in dynamic environments.

Whether you're part of a tactical team or an everyday carrier, the Sidewinder OWB holster delivers unmatched performance, with features tested by some of the world's toughest soldiers.

Bends in on your hip contours

Due to the sides of the holster being angled towards the body. This provides optimal comfort and concealment when worn under a jacket, button-shirt or even a t-shirt.

Retention-screw

With the retention screws you can adjust for a personalized retention on the firearm in the holster. Depending on your role, your personal preference can be set easily.

This holster is produced out of two 1,5mm Kydex sheets which are riveted together making it lightweight, strong and somewhat flexible on the sides of the holster.

Other design features:

- Allows for a full permanent firing-grip on the pistol grip
- Sight channel is high enough to allow for suppressor-sights
- Extra barrel space to accommodate an extended or threaded barrel
- Cut-line to provide clearance for RMR/SRO/ARCO/etc
- Multiple eyelets to mount the belt-loops to. This also gives the option to change the ride-high and/or tilt of the holster on your hip





PHANTOM

Crafted with precision and attention to detail, the Phantom is our response to the request from the counter terrorism units. A low-profile IWB holster that offers both adjustable retention and a comfortable fit for everyday IWB carry.

Designed for the modern carrier, the Phantom provides a smooth, quick draw while keeping your firearm securely in place at all times.

Its minimalistic design ensures easy concealment without sacrificing performance or comfort.

Perfect for all-day carry, the Phantom IWB holster is engineered with your daily needs in mind. The adjustable retention lets you fine-tune the draw speed to your preference and its slim profile ensures that it remains comfortable, even during long hours of wear.

The 6-hole pattern

Allows the holster to be carried in a way that the firearm can be gripped with a permanent firing-grip on the frame. Or it can be worn deeper, with the frame being deeper towards the belt-line. Also the pattern allows the mounting of the belt-clips to be tilted forwards or backwards.

So if you prefer your holster to be carried on a 4 o'clock position, this allowed for an optimized carrier and draw comfort. This holster is produced out of one single 2mm Kydex sheet which is folded over, making it overall more durable but still lightweight and comfortable to wear.

Other design features:

- Allows for a full permanent firing-grip on the pistol grip
- Sight channel is high enough to allow for suppressor-sights
- Extra barrel space to accommodate an extended or threaded barrel
- Cut-line to provide clearance for RMR/SRO/ARCO/etc





_Paveway

PAVEWAY

The ultimate solution for those seeking the perfect blend of comfort, concealment and tactical readiness. Building on the success of our Phantom IWB holster, the Paveway combines a secure, ultra-comfortable inside-the-waistband fit with an integrated extra magazine pouch. Creating a stable and versatile AIWB (Appendix Inside the Waistband) platform that's ready for everyday carry and tactical scenarios.

This unique combination allows you to carry both your firearm and a magazine in a streamlined, ergonomic configuration, giving you the confidence to carry all day long without sacrificing comfort or functionality.

Concealment wing

Just like the Phantom holster; our Paveway holster is also equipped with a "Concealment wing".

This creates pressure on the inside of your belt-line, resulting in a rotation of the holster towards your body and hereby the pistol grip is printing less trough your garment.

This holster is produced out of two 1,5mm Kydex sheets. Which are riveted and screwed together making it lightweight, strong and somewhat flexible in the middle of the holster, between pistol and magazine

Other design features:

- Allows for a full permanent firing-grip on the pistol grip
- Sight channel is high enough to allow for suppressor-sights
- Extra barrel space to accommodate an extended or threaded barrel
- Cut-line to provide clearance for RMR/SRO/ARCO/etc





LOWRIDER

A more tactical holster designed to give you optimal firearm placement by riding lower on the belt-line. This design ensures that your firearm remains easily accessible while clearing potential obstacles such as vests, jackets, body armor, chest rigs, or plate carriers, which may otherwise interfere with your draw.

Whether you're on duty, at the range, or in a tactical environment, the LowRider is built to keep your firearm accessible without sacrificing comfort or concealability.

The LowRider Holster features a versatile hole pattern that makes it compatible with a wide variety of platforms, including well-known brands such as Safariland, G-Code, Blackhawk and of course Blade-Tech.

Retention-screw

Allows for a personalized retention on the firearm in the holster. Leave it low and have quick and easy access. Or put it a little tighter and feel more secure while moving around quickly. Or screw it down and make sure you feel comfortable during a run and slide.

This holster is produced out of one single 2,5mm Kydex sheet which is folded over making this one of the more durable and robust holsters out there.

Other design features:

- Allows for a full permanent firing-grip on the pistol grip
- Sight channel is high enough to allow for suppressor-sights
- Extra barrel space to accommodate an extended or threaded barrel
- Cut-line to provide clearance for RMR/SRO/ARCO/etc



LowRiderL2_

LOWRIDERL2

The next level in secure, low-ride tactical carry. Building on the design of our original LowRider holster, the L2 offers enhanced retention and security without compromising on accessibility or comfort. Designed for professionals who require an added layer of protection and more secure and dependable option for their sidearm

The LowRiderL2 features a Level 2 retention system, which includes an added security mechanism to ensure your firearm stays firmly in place during active movement, tactical operations, or demanding environments. The system allows for quick access when you need it most, but also provides an extra layer of protection to prevent unauthorized or accidental draws, while maintaining the adjustable level 1 retention you're used to from the LowRider holster.

The Hood:

Introducing the Level II Hood Kit by Talon Retention Systems - a must-have for enhancing the safety and security of your holster. Made in the U.S.A and crafted with Holster Makers in mind, this kit allows for seamless integration of a Level II retention system into any holster. Offering a higher level of retention than the standard Level I, the Level II Hood Kit is equipped with an automatic thumb break release mechanism.

This holster is produced out of one single 2,5mm Kydex sheet which is folded over making this one of the more durable and robust holsters out there.

Other design features:

- Allows for a full permanent firing-grip on the pistol grip
- Sight channel is high enough to allow for suppressor-sights
- Extra barrel space to accommodate an extended or threaded barrel
- Cut-line to provide clearance for RMR/SRO/ARCO/etc



Epstein Hanger

EPSTEIN HANGER

Because holsters don't hang themselves — neither did he. But this will let you do just that.

We set out to create a reliable, robust, low-cost solution for mounting your LowRider(L2)/Drop Leg/Duty -holster to your belt.

This holster hanger is CNC-machined in-house from a single piece of Delrin and can be mounted to your belt using our VelcroBeltAdapter or MOLLE-Lok attachments. The design allows compatibility with multiple holster brands – not just our own.

It provides multiple ride-height options and lets you adjust the tilt of your holster on the plate. The hanger pairs perfectly with the Blade-Tech Tech-Mount and DefTex leg strap.

It provides multiple ride-height options and lets you adjust the tilt of your holster on the plate along with two slots to route a legstrap through.

The hanger pairs perfectly with the Blade-Tech Tech-Mount and DefTex leg strap.

Product includes:

- CNC Machined Holster Drop Plate
- VelcroBeltAdapter included
- Mounting screws





PTG

The Pistol Trigger Guard Holster, A minimalistic, lightweight solution designed to cover just the trigger guard of your pistol, offering essential protection without the bulk.

Perfect for those who prefer a streamlined, discreet carry, the PTG ensures your firearm remains secure while being easily accessible when needed.

This holster is ideal for carrying your firearm inside a bag, purse, or glove box compartment. The compact, minimalistic design ensures it fits neatly and securely in these environments, offering an extra layer of safety while keeping your firearm within easy reach.

For those looking for added comfort and stability, the PTG offers the option to add a concealment wing and clip for IWB or OWB carry. These customizations allow for a more secure and adaptable carry setup, when you're using it on your body instead of in a bag or vehicle.

This allows the PTG to be used in a more traditional concealed carry type of way.

The PTG Pistol Trigger Guard Holster is the ideal choice for those who want a simple, safe and functional solution to trigger protection. Whether carried inside a bag, purse, glove box, or used as part of a concealed carry setup, the PTG offers practicality, protection and versatility for everyday carry.





P1MC

The hole-pattern has been updated to allow for more mounting options and it now has studs for mounting on both sides so we now offer dedicated Right-handed shooter and left-handed shooter versions. Of course the magazine carrier is still fully ambidextrous, allowing you to carry points-forward or backwards in the same carrier.

The top holes allow for the standard 1" IWB clip.
The middle holes allow for the VBA (adj. tilt).
The bottom holes allow for the Straight bottom clip (adj. tilt).

What sets the P1MC apart is its unique hole pattern on the back, which opens up a variety of mounting options to further enhance your carry options.

P2MC

OWB Double Magazine Carrie – a premium, Kydex-crafted solution designed to keep your extra magazines secure, accessible and ready for action. Engineered for tactical professionals and everyday carriers alike, this OWB (Outside the Waistband) Magazine Carrier offers a sleek, durable and functional way to carry two additional magazines comfortably at your side.

ne standout feature is its adjustable retention, allowing you to fine-tune the level of security and draw speed for your individual needs. Whether you prefer a tighter hold or a quicker, smoother release, the adjustable retention ensures your magazines are secure while offering a customizable draw experience every time.





SIG MPX Mag-Carrier

Sturdy Mag Carrier for the MPX line of Magazines. Designed to securely seat your MPX Magazine for all types of tactical operations.

Designed for Covert or Direct Action missions, the MPX Mag Carrier gives you all the options with the versatile range of mounting options it can provide.

Fine-tune your perfect grip with the adjustable retention system - locking your magazines down for total security yet easy to release when it's time to move fast.

HK MP7 Mag-Carrier

Secure, low-profile, concealed and adaptable Kydex magazine carrier for HK MP7 4.6x30mm mags. Adjustable retention, unique-hole mounting pattern, duty-ready.

Crafted from genuine Kydex, the MP7-MC offers a precision fit for your HK MP7 magazines, delivering excellent retention and a fast, smooth draw.

The adjustable retention system lets you fine-tune the grip to your preference, ensuring your magazines stay locked in when you need security - and are instantly accessible when you need speed.





Rifle Mag-Carrier

A versatile and durable solution for securely carrying your 5.56 NATO (including popular PMAG, Lancer, HK416, STAN-Mags)

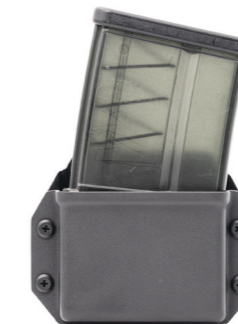
Whether you're looking for a discreet concealed carry option or a sturdy, reliable carrier for your duty belt, this magazine carrier is engineered to meet the demands of both.



HK417 Mag-Carrier

Versatile and durable solution for securely carrying your HK417/MR308/7.62mm NATO.

Whether you're looking for a discreet concealed carry option or a sturdy, reliable carrier for your duty belt, this magazine carrier is engineered to meet the demands of both.



.338 Lapua Mag-Carrier

.338 Lapua Mag-Carrier compatible with AI & Sako magazines. Adjustable retention, 10-hole mounting pattern. Field-proven and modular.

A rugged, precision-fit solution for securely carrying your .338 Lapua magazines – compatible with both Accuracy International (AI) and Sako .338 platforms.





SHN Cuff-Carrier + LIPS Cuff-Carrier

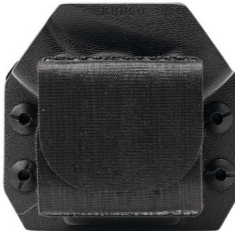
A sleek and efficient solution for law enforcement officers who need to concealed carry their handcuffs while working in civilian clothing. Designed for those who value both discretion and accessibility, the Cuff Carrier ensures that officers can carry their handcuffs securely without drawing attention.

The Cuff Carrier features a minimalist design that holds the handcuffs snugly and securely, allowing them to sit comfortably against the body while remaining concealed under clothing. With adjustable retention, the carrier ensures that the handcuffs are securely held in place, offering a reliable fit and easy access when needed. For those who want an extra layer of security, we also offer an optional security strap that can be added for even greater retention, ensuring that your handcuffs stay securely in place during intense activities or rough conditions.

For officers who prefer to carry their handcuffs on their duty belt, the Cuff Carrier can be mounted using our VBA (Velcro Belt Attachment) system. This option allows for a secure, stable fit on any standard duty belt, giving officers the flexibility to choose between concealed carry or traditional on-duty carry.

10-hole-pattern

- On the back allows for a wide range of mounting options,
- Belt clip
 - Belt loops
 - TEKLOK
 - MOLLE-LOK
 - Velcro belt attachment





BONOWI Baton Carrier

The Bonowi Baton Carrier features a unique design with an open side on one side, allowing officers to quickly and easily reholster their baton—even if it fails to collapse. This practical feature ensures that officers can secure their baton back into the carrier with one hand, keeping their hands free for other tasks.

This is especially helpful in situations where reholstering needs to happen quickly and the baton is still in its expanded form.

For added versatility, the Bonowi Baton Carrier is designed with concealment in mind, allowing officers to carry their baton discreetly when off-duty or in plain clothes. However, it can

also be mounted securely to our VBA (Velcro Belt Attachment) system for duty use, providing officers the option to carry the baton on their duty belt for daily law enforcement work. This dual-use functionality ensures that the carrier is adaptable for any situation.

The Bonowi Baton Carrier combines practicality, security and adaptability, making it an essential accessory for law enforcement officers who require quick access to their baton, whether in a concealed carry setup or while on duty.





Sepura Carrier for STP8000, SC2020 and SC2120

A purpose-built solution designed to help law enforcement officers concealed carry their radios while working in civilian clothing.

This discreet carrier ensures that officers can stay connected and responsive without compromising their undercover or civilian appearance.

The Sepura Radio Carrier is specially designed to hold the radio with the screen facing toward the body, ensuring that any emitted light from the screen remains hidden, preventing it from shining through and potentially revealing the officer's position. This unique design allows officers to maintain a low profile while still having full access to their radio for communication.

In addition to its concealed carry function, the Sepura Radio Carrier is also versatile enough for everyday law enforcement work.

It can be easily mounted via our VBA (Velcro Belt Attachment) system, allowing the carrier to be securely attached to a duty belt. This gives officers the flexibility to carry their radio securely on their duty belt during regular shifts, providing easy access while remaining hands-free.

The Sepura Radio Carrier offers a sleek, practical and adaptable solution for officers who need to carry their radios both covertly in civilian clothing and securely on a duty belt for day-to-day law enforcement tasks. Whether in plain clothes or on duty, this carrier ensures officers stay connected and ready for action at all times.

We offer two models:
SC2020 (also holds STP8000/9000).
SC2120.





CAT Carrier

A simple yet highly functional Kydex pouch designed to securely hold your CAT tourniquet and protect it from the elements. Built with durability in mind, this pouch keeps your tourniquet safe, clean and ready for use when you need it most.

Keep your CAT tourniquet safe and within reach with the CAT Carrier. A minimalist solution that ensures your tourniquet is always ready for immediate use, while offering excellent protection from the outside elements.

Simple, reliable and essential for your first aid gear.

PSV Carrier

Carrier for the non-lethal PSV spray. Designed to be mounted to the Sidewinder Pistol holder for easier access while keeping it concealed underneath garments.

Easy and fast to install.



A close-up photograph of a person's waist and hands. The person is wearing a dark grey t-shirt and olive green cargo pants. They have a tactical belt with several items: a black handgun in a Kydex holster on the left, a magazine pouch in the center, and a tan magazine pouch on the right. The person's left hand is holding the handle of the handgun, and their right hand is resting on their thigh. They are wearing a black wristband on their left wrist and a black watch with a grey strap on their right wrist.

Kydex Holsters NLD
Netherlands

Phone: 0031 (0)10 3030 800
Email: info@kydexholster.nl

All photographs by @pk.captured