

SODAQ

Civity

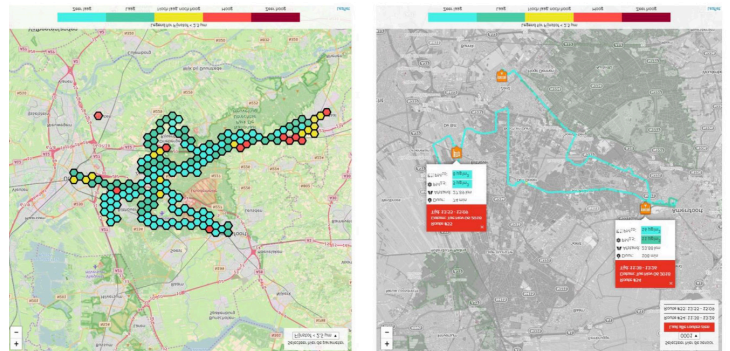
SNIFFER BIKE

- Measures Air Quality (PM2.5, PM10)
- Data is validated by the RIVM (Institute of Health and Environment)
- Tracks bicycle routes (improve traffic management) & road quality (acceleration)
- Measures temperature, pressure, humidity, VOC (volatile organic compound)
- Suitable for municipalities looking to make data-driven decisions
- Integrated dashboard utilizing LTE-M



With a rising environmental concern of air pollution, we set out to develop solutions that allow municipalities to tackle these problems. The Sniffer Bike is an advanced air quality sensor developed by SODAQ and Civity. These devices allow for a range of data to be collected for insightful analysis.

This data collection is the first step in determining the severity of air quality to better understand the current environment. This device further plays a role in the second step - determining the effect of measures taken to improve air quality, whether it is on a street, city, or country level. To ensure valid data, it is now possible to calibrate data based on professional measuring stations based in the Netherlands



View the Interactive Dashboard:
bit.ly/SODAQsnifferbike

Key Features

LTE-M
Enabled



Advanced Air
Quality Sensor



Integrated
Dashboard



SODAQ

Bussumerstraat 34
1211 BL Hilversum
The Netherlands

www.sodaq.com
info@sodaq.com
+31 35 3000 301