

PORTABLE LIGHTS BY PROFESSIONALS FOR PROFESSIONALS

# OPTILIGHT

GOED LICHT VOOR GOED WERK

[www.optilight.com](http://www.optilight.com)

**RECHARGEABLE**  
operating 8 hours!

- ✓ EASY TO USE: RECHARGEABLE
- ✓ LIGHTWEIGHT AND COMPACT
- ✓ SAFE DESIGN

## RECHARGEABLE LED work light **ULTRA2**

No need for power-supply, cables or a transformer.

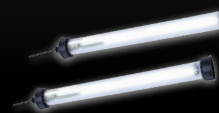
Quick access to hard-to-reach places in an ATEX environment.

Designed to be used during *cleaning, maintenance or inspection.*

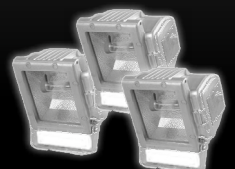
- Environment friendly: built from non toxic and recyclable quality plastics
- Battery guarantee 4 years
- Sealed batteries and RoHS and REACH compliant.



or



or



# RECHARGEABLE LED work light **ULTRA2**



- No power supply on site needed
- No SELV transformer required
- No ATEX cables needed



**AIRCRAFT INDUSTRY**



**VESSELS**



**PETROCHEMICAL**

## COMPACT DESIGN

Used in fuselage, wings, cockpit or holds.

## FLOATING

Waterproof (IP65) and floating. Suitable for maintenance and inspection in engine rooms and pumphouses.

## HIGH CERTIFICATION

Used inside: fuel tanks, reactors, catalysts, floating roof constructions, gas stations or near valves and pipe leaks.



**FOOD PROCESSING**



**STORAGE**



**AND MANY MORE...**

## CHEMICAL RESISTANT

Used in: alcohol processing, grain silos, milling processes.

## DEMANDING ENVIRONMENTS

Used inside: fuel tanks, sewage tunnels, containers and other confined spaces.

## VARIOUS SITUATIONS

Used by: military, police, fire and other emergency response teams.

## SPECIFICATIONS

Reference number	6062100
Watts	25W
Lamps	81 High intensity LED's
Light output	3500 Lumen   5000 ° K
Material	Shockproof, antistatic plastics
Dimensions	388 x 319 x 147 mm
Weight	7 kg
Operating time	8 hours
Charge time	9 hours

Batteries	Lithium Polymeer (LiPo)., 51,2 Ah. Sealed with 4 years guarantee
Zone	1, 2, 21 and 22
Certificate gas	Ex II 2G Ex ib IIC T4 Gb
Certificate dust	Ex II 2D Ex ib IIIC T135 ° C Db IP65
Compliance with directives	ATEX, IECEx (pending), RoHS, REACH
Ambient temperature	-20 °C to + 45 °C
IP	IP65

## OPTIONS

- Protective films
- Supporting frame
- Build-in magnets
- Scaffolding hook
- Tripod

## BATTERY

- Sealed
- 4 years guarantee
- Replacable



*Texts and images are indicative, non-contractual and subject to change without prior notice. Errors and modifications reserved. All images are indicative.*

**OPTILIGHT BY ATEXINDUSTRIES BV**

Kerkstraat 17, NL-4285 BA Woudrichem | T +31 (0)183-30 93 33 | F +31 (0)183-30 93 35 | info@optilight.com | www.optilight.com