

EL-WEM Quick Start Guide



Wireless Indoor Air Quality Monitor

Your data, anytime, anywhere

Measuring Air Quality With Your EL-WEM

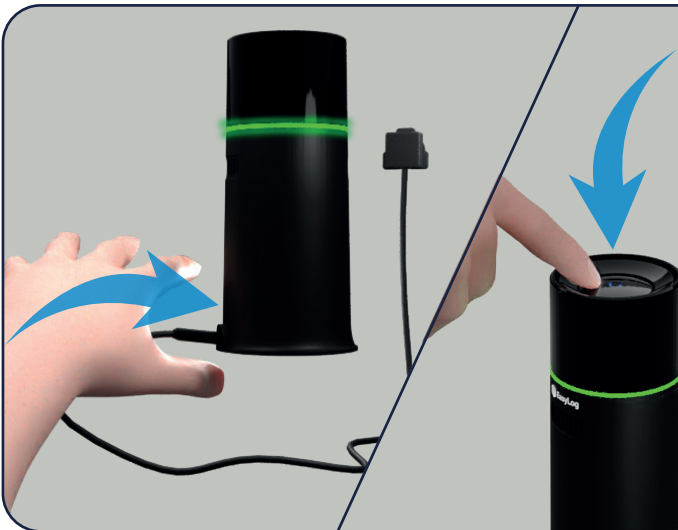
1

Select the correct plug type for your local region and fit it to the power supply. Note you have to fit it at a slight angle, then push and rotate to lock it into place.



2

Plug in your device and press the power button. The sounder will beep and the status ring will cycle through its colours, and then flash blue while the EL-WEM starts up. After 20 seconds the status ring will turn green, showing the device is now working.



3

As your EL-WEM measures the air around it, the colour of the status ring shows the Indoor Air Quality, in five levels, from Excellent down to Inadequate.

Excellent

Good

Fair

Poor

Inadequate

Connecting Your EL-WEM to the Cloud

Connecting your device to the EasyLog Cloud allows you to view your data from anywhere, using any internet-connected device, or with the EasyLog App. If you already have an EasyLog Cloud account, and have the App installed, you can go straight to Section 7.

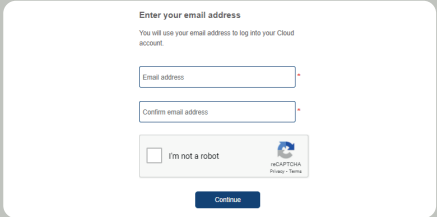


4

Visit easylogcloud.com and click Sign Up Now Sign Up Now then select either a Starter account (with limited functionality) or a Professional account (to get all the available features).

5

Follow the on-screen instructions to set up your account.



6

Download and install the EasyLog Cloud App.





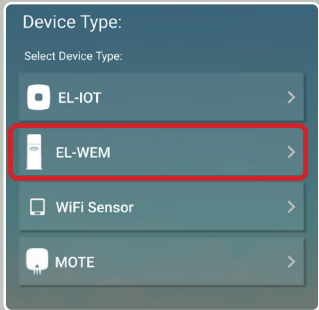
GET IT ON  **Google Play**

Download on the  **App Store**

7

Sign into the App using the login for your EasyLog Cloud account.

Select 'Setup Device', then select 'EL-WEM' and follow the on-screen instructions in the App. Once your device is on the Cloud you can set up email and SMS alarm notifications, set a Do Not Disturb period every day for the status ring and sounder, and make use of many other advanced features.



www.lascarelectronics.com Issue 3_03_2022



The appliance can be used by children from 8 years and above and persons with reduced physical, sensory or mental capabilities or lack of experience and knowledge if they have given supervision or instruction concerning use of the appliance in a safe way and understand the hazards involved. Children shall not play with the appliance. Cleaning and user maintenance shall not be made by children without supervision. This appliance must only be supplied at safety extra low voltage corresponding to the marking on the appliance. This appliance contains batteries that are only replaceable by skilled persons. **WARNING:** For the purpose of recharging the battery, only use the power supply model: ICP06C-050-1000B provided with this appliance.

Disclaimer: Every effort has been made to ensure the accuracy of this publication and no responsibility or liability can be accepted by Lascar Electronics Limited for any errors or omissions in the content of this document. Data and legislation may change, and so we strongly advise you to obtain and review the most recently issued regulations, standards, and guidelines. This publication does not form the basis of a contract.