

EQUIPMENT



Workbench equipment enhances workbenches and workstations, providing increased functionality, organisation, productivity, and ergonomics.

39 SUPERSTRUCTURE EQUIPMENT

40 STORAGE EQUIPMENT

46 PACKING EQUIPMENT

48 ELECTRICAL EQUIPMENT

50 COMPUTER EQUIPMENT

51 ERGONOMIC EQUIPMENT

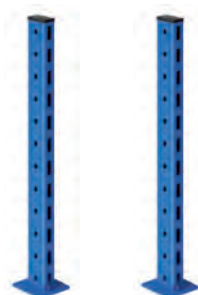




SUPERSTRUCTURE UPRIGHTS WITH CROSSBAR

Uprights made of perforated steel tube, 60x30mm section. H30xW10mm perforations at 50mm intervals on front and rear faces, H10xW10mm at 50mm intervals on side faces. Fixed to the workbench top with plates and counterplates. Uprights may be employed to attach accessories (shelves, rails, panels, or various stands) to the perforations on the front, rear, or sides. Upper crossbar made of 10/10th sheet steel with 10x10mm square perforations. Finished with a fine-textured structured epoxy powder paint, oven-polymerised at 180°C.

Model	H.	Reference	Colour Code		
2 uprights + 1 crossbar W865 for min. W1000/1200 workbench	1200	W01 008 0110	Bl or GA or GC		
2 uprights + 1 crossbar W1300 for min. W1500 workbench		W01 008 0111	Bl or GA or GC		
3 uprights + 2 crossbars W635 for min. W1500 workbench		W01 008 0112	Bl or GA or GC		
3 uprights + 2 crossbars W635+W865 for min. W1800 workbench		W01 008 0113	Bl or GA or GC		
3 uprights + 2 crossbars W865 for min. W2000 workbench		W01 008 0114	Bl or GA or GC		



SUPERSTRUCTURE UPRIGHTS WITHOUT CROSSBAR

Uprights for equipment fixation: perforated panels, shelves, grab containers support rails, etc. Fixed with plates and counterplates to the workbench top. Finished with a fine-textured structured epoxy powder paint, oven-polymerised at 180°C.

Model	H.	Reference	Colour Code		
1 upright	1200	W01 008 0370	Bl or GA or GC		
2 uprights	600	W01 008 0371	Bl or GA or GC		
		W01 008 0115	Bl or GA or GC		



UPRIGHTS FOR PACKLOG SUPERSTRUCTURE WITHOUT CROSSBAR

The use of PACKLOG uprights, equipped with a reinforcing leg, is required when using the depth-adjustable shelf with dividers. They are fixed to the workbench top with plates and counterplates. Finished with a fine-textured structured epoxy powder paint, oven-polymerised at 180°C.

Model	H.	Reference	Colour Code		
2 PACKLOG uprights	1200	W01 008 0360	Bl or GA or GC		
3 PACKLOG uprights		W01 008 0361	Bl or GA or GC		
1 PACKLOG upright		W01 008 0372	Bl or GA or GC		



GALVANISED LOWER SHELF FOR SI AND PTH WORKBENCH

Galvanised lower shelves are designed to fit onto SI and PTH workbenches, resting on the side scale crossbars and the central longitudinal crossmember. They feature notches to ensure proper support between the leg supports. These shelves are made from galvanised sheet steel, 15/10th thick. The fold thickness on the front and rear faces is 60mm.

W.	D.	Reference		
1200	750	W01 001 0471		
1500		W01 001 0472		
1800		W01 001 0473		
2000		W01 001 0474		



MELAMINE LOWER SHELF FOR PTH WORKBENCH

Melamine lower shelves are designed to fit onto PTH workbenches, resting on the side scale crossbars and the central longitudinal crossmember. They are made from chipboard with a melamine finish, 19mm thick, and 2mm ABS edges. Melamine shelves are not compatible with 520mm high drawer units.

W.	D.	Reference		
1200	750	W01 002 0133		
1500		W01 002 0134		
1800		W01 002 0135		
2000		W01 002 0136		



SUSPENDED DRAWER UNITS

The drawer units can be suspended beneath the workbench frames using the supplied mounting plates. They are made from 10/10th thick folded sheet steel. The housing and drawers are assembled by spot welding. The drawer fronts feature an integrated full-length handle. They are mounted on full-extension ball-bearing telescopic slides.

Selective drawer release prevents multiple drawers from opening simultaneously, reducing the risk of tipping.

The drawers are secured with a central locking system.

Overall dimensions: D600xW460mm. Heights: 220mm for the single-drawer unit, 370mm for the two-drawer unit, and 520mm for the three-drawer unit. Drawer front height: 150mm.

Internal drawer dimensions are: W380xD542xH130mm (sides and rear H60mm).

Maximum load per drawer: 50kg.

Finished with fine-textured structured epoxy powder paint, oven-polymerised at 180°C

Model	H.	Reference	Colour Code		
1 drawer unit H150	220	W01 009 0096	GC		
2 drawer unit H150	370	W01 009 0097	GC		
3 drawer unit H150	520	W01 009 0098	GC		
5 drawer cabinet 1xH75 and 4xH150	800	W01 009 0099	GC		



MOBILITY KIT FOR 3 OR 5 DRAWER UNITS

The kit consists of a 10/10th thick folded sheet steel top and a set of four swivel castors, 100mm in diameter, two of which are fitted with brakes.

It is mounted on the drawer units to make them mobile. Finished with fine-textured structured epoxy powder paint, oven-polymerised at 180°C.

Reference	Colour Code		
W01 009 0100	GC		



UPPER SHELF EXTENSION

Made from folded sheet steel, 12/10th thickness. Includes 2 removable exterior side panels for cables, capable of accommodating cables with a diameter of up to 35mm. Maximum load capacity: 100kg. Finished with fine-textured structured epoxy powder paint, oven-polymerised at 180°C.

W.	D.	H.	Reference	Colour Code		
1200 (useful 1030)	400	650	W01 008 0095	GC		
1500 (useful 1305)			W01 008 0096	GC		
1800 (useful 1605)			W01 008 0097	GC		
2000 (useful 1805)			W01 008 0098	GC		



INTERMEDIATE SHELF FOR UPPER SHELF EXTENSION

Made from folded sheet steel, 12/10th thickness. Height-adjustable shelf in 120mm increments (170mm, 290mm, 410mm, or 530mm above the workbench top) between the sides of the upper shelf extension. Maximum load: 50kg. The intermediate shelf is not compatible with the perforated paneW. Finished with fine-textured structured epoxy powder paint, oven-polymerised at 180°C.

W.	D.	H.	Reference	Colour Code		
1200 (useful 1030)	400	60	W01 008 0099	GC		
1500 (useful 1305)			W01 008 0100	GC		
1800 (useful 1605)			W01 008 0101	GC		
2000 (useful 1805)			W01 008 0102	GC		



WORKTOP BASE CABINET WITH ROLLER SHUTTER DOOR

Body made of folded sheet steel, 10/10th thickness, assembled by spot welding. Features a PVC slatted curtain door, sliding laterally on each side, with a key-lock closure.

Useful height: 760mm (access: 700mm).

Useful depth: 155mm.

The rear panel has 10x10mm perforations with a pitch of 38mm for hanging tool holders, maximum depth 150mm.

Finished with fine-textured structured epoxy powder paint, oven-polymerised at 180°C.



Model	W.	D.	H.	Reference	Colour Code		
Worktop base cabinet with roller shutter door	1500 (useful 1380)	250	800	W01 008 0107	GC		
	2000 (useful 1880)			W01 008 0108	GC		
Set of 15 mixed accessories for base cabinet				W01 008 0245			

WORKBENCHES AND WORKSTATIONS

STORAGE EQUIPMENT

Colour chart:

BI	GA	GC
RAL 5015	RAL 7016	RAL 7035



PERFORATED PANEL WITH 2 UPRIGHTS

H605mm uprights made of perforated steel tube with a section of 60x30mm and H30xW10mm perforations at 50mm intervals on the front and rear faces, and H10xW10mm perforations at 50mm intervals on the side faces.

Fixed with a plate and counter-plate to the workbench top.

The perforated panels are made of folded sheet steel, 10/10th thick, H585mm. Perforations are H10xW10mm at a pitch of 38mm for hanging tool holders. Includes two cable entries with a diameter of 35mm.

Finished with fine-textured structured epoxy powder paint, oven-polymerised at 180°C.

Model	H.	Reference	Colour Code		
Workbench W1200	605	W01 008 0116	BI or GA or GC		
Workbench W1500		W01 008 0117	BI or GA or GC		
Workbench W1800		W01 008 0118	BI or GA or GC		
Workbench W2000		W01 008 0119	BI or GA or GC		



PERFORATED PANEL TO BE MOUNTED BETWEEN THE SUPERSTRUCTURE UPRIGHTS

Perforated panel made of 10/10th thick sheet steel with 10x10mm square perforations at a 38mm pitch for hanging tool-holder equipment. Depth: 30mm.

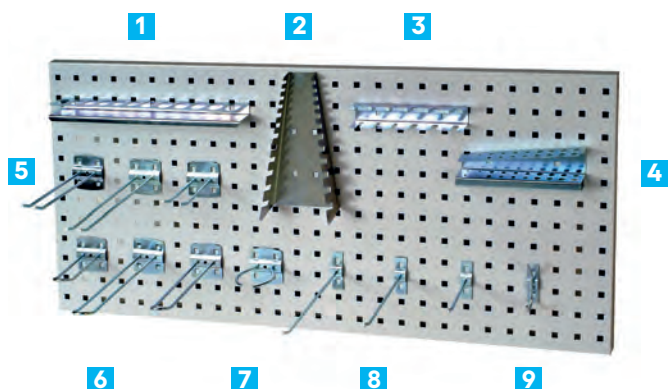
Finished with fine-textured structured epoxy powder paint, oven-polymerised at 180°C.

W.	H.	Reference	Colour Code		
635	395	W01 008 0120	GC		
865		W01 008 0121	GC		
1300		W01 008 0122	GC		

TOOL-HOLDER ACCESSORIES FOR PERFORATED PANEL

The tool holder is designed to accommodate various tools such as screwdrivers, spanners, hex wrenches, sockets, blister packs, etc. Made of galvanised steel, it can be easily clipped into the perforations.

The worktop base cabinet is compatible only with hooks that have a maximum depth of 150mm.



	Model	Reference		
1	12 sockets support	W01 008 0141		
2	12 open-end spanners support	W01 008 0142		
3	6 screwdrivers support	W01 008 0143		
4	20 hex keys support	W01 008 0144		
5	Double rod hook D160	W01 008 0145		
	Double rod hook D200	W01 008 0146		
	Double rod hook D100	W01 008 0147		
6	Double hook closed D100	W01 008 0148		
	Double hook closed D200	W01 008 0149		
	Double hook closed D160	W01 008 0150		
7	Loop ring hook diameter 55	W01 008 0151		
8	Single rod hook D100	W01 008 0152		
	Single rod hook D160	W01 008 0153		
	Single rod hook D200	W01 008 0154		
9	Double coat hook D50	W01 008 0155		
	Set of 15 mixed accessories	W01 008 0156		
	Set of 15 mixed accessories for worktop base cabinet	W01 008 0245		



TILTING AND DEPTH-ADJUSTABLE SHELVES TO BE MOUNTED BETWEEN THE TWO UPRIGHTS OF THE SUPERSTRUCTURES

Made of folded sheet steel, 12/10th thickness. Fastened between the superstructure uprights, the shelves are reversible, allowing the 25mm edge to be positioned at the front or back.

Inclination up to 45°. Max load: 50kg.

Finished with fine-textured structured epoxy powder paint, oven-polymerised at 180°C.

W.	D.	Reference	Colour Code		
635	350	W01 008 0126	GC		
865		W01 008 0127	GC		
1300		W01 008 0128	GC		
635		W01 008 0129	GC		
865	450	W01 008 0130	GC		
1300		W01 008 0131	GC		



EURO CONTAINERS

Grey polypropylene containers with European dimensions.

Resistant to oils, greases, and temperature variations.

Full sides.

Model	W.	D.	H.	Reference		
Capacity of 44.2 litres	600	400	220	W01 008 0228		
Capacity of 20.8 litres	400	300		W01 008 0229		
Capacity of 64.5 litres	600	400	320	W01 008 0230		

WORKBENCHES AND WORKSTATIONS

STORAGE EQUIPMENT

Colour chart:

GC

RAL
7035



GRAB CONTAINERS SUPPORT RAIL TO BE MOUNTED BETWEEN THE TWO UPRIGHTS OF THE SUPERSTRUCTURES

Made of 20/10th thick folded sheet steel.

The grab container rails are fastened between the superstructure uprights. The actual useful length of the rails should be increased by 20mm compared to the indicated dimensions.

There are two possible positions for the grab container rails: vertical or inclined 15° forward.

Max load: 50kg.

Finished with fine-textured structured epoxy powder paint, oven-polymerised at 180°C.

W.	Reference	Colour Code		
635	W01 008 0161	GC		
865	W01 008 0162	GC		
1300	W01 008 0163	GC		



MINI-RAIL FOR HOOKING GRAB CONTAINERS ONTO THE PERFORATED PANEL

The mini-rail is fixed to the H10xW10mm perforations of the perforated panels.

Finished with fine-textured structured epoxy powder paint, oven-polymerised at 180°C.

W.	Reference	Colour Code		
145	W01 008 0160	GC		



GRAB CONTAINERS

Plastic grab containers, stackable. Resistant to oils, greases, and temperature variations.

Featuring a label area (labels not included) and a gripping handle.

The bins can be fastened by clipping into the grab container rails or mini-rails.

Model	W.	D.	H.	Reference		
Set of 48 1L red grab containers	105	160	75	W01 008 0216		
Set of 48 1L blue grab containers				W01 008 0219		
Set of 48 1L yellow grab containers				W01 008 0222		
Set of 48 1L grey grab containers				W01 008 0225		
Set of 38 3.5L red grab containers	144	235	120	W01 008 0217		
Set of 38 3.5L blue grab containers				W01 008 0220		
Set of 38 3.5L yellow grab containers				W01 008 0223		
Set of 38 3.5L grey grab containers				W01 008 0226		
Set of 24 10L red grab containers	205	345	163	W01 008 0218		
Set of 24 10L blue grab containers				W01 008 0221		
Set of 24 10L yellow grab containers				W01 008 0224		
Set of 24 10L grey grab containers				W01 008 0227		



TRAY

Made of folded sheet steel with a thickness of 20/10th. The shelves can be fastened by clipping into the grab container rails or screwed into the superstructure uprights and perforated panels.

The front edge has a height of 21mm, and the shelf depth is 220mm.

Max load: 10kg.

Finished with fine-textured structured epoxy powder paint, oven-polymerised at 180°C.

W.	D.	Reference	Colour Code		
340	250	W01 008 0334	GC		
510		W01 008 0335	GC		



MULTI-PURPOSE TRAY

Made of folded sheet steel, 20/10th thickness. The multi-function shelves can be fastened by clipping into the grab container rails or screwed into the superstructure uprights and perforated panels. Notches enable the attachment of a barcode scanner or adhesive tape dispenser.

The front edge has a height of 21mm.

Maximum load capacity: 10kg.

Finished with fine-textured structured epoxy powder paint, oven-polymerised at 180°C.

W.	D.	Reference	Colour Code		
330	240	W01 008 0302	GC		



HOLDER FOR 10 A4 SLEEVES

Set of 10 transparent A4-sized sleeves with coloured edges, fastened to a metal stand.

Model	Reference		
Holder for 10 A4 sleeves	W01 008 0190		



25L BIN WITH SUPPORT

The overall dimensions are W340xD258xH344mm. The bin can be positioned widthwise or depthwise and is mounted to the workbench ladders, under the worktop. Multiple bins can be fixed side by side on the workstation for recycling purposes.

Reference	Colour Code		
W01 008 0349	GC		



Workbench composed of:

- Shelf with dividers
- Tiltable and depth-adjustable shelf
- Reel bar
- Manual paper cutter



SHELF WITH DIVIDERS

The shelf is depth-adjustable forwards or backwards, with a total travel of 210mm, and attaches between the PACKLOG superstructure uprights. The dividers are fixed to the shelf with screws and nuts, at a pitch of 125mm. Divider dimensions: H350xD500mm.

Model	W.	Reference	Colour Code		
6 dividers	1300	W01 008 0344	GC		



MANUAL PAPER CUTTER

Cutter guide channel for precise cutting, equipped with a return spring to hold the film and an open-position locking system. It can be fastened on or under the worktop or between the uprights. Maximum roll length: 1250mm. Available only in smooth black.

W.	Reference	Colour Code		
1300	W01 008 0340	NL		



ROLL HOLDER

Manufactured from round steel tube with a diameter of 25mm. It can be attached between superstructure uprights by simply clipping, or under the chassis for the under-station version. Designed for installing rolls of bubble wrap, kraft paper, or corrugated cardboard. Maximum load capacity: 40kg. Finished with fine-textured structured epoxy powder paint, oven-polymerised at 180°C.

W.	Reference	Colour Code		
865	W01 008 0303	GC		
1300	W01 008 0304	GC		
1760	W01 008 0305	GC		



UNDERSTATION ROLL DISPENSER

For reels of bubble wrap, kraft paper, or corrugated cardboard. Maximum load capacity: 40kg. Finished with fine-textured structured epoxy powder paint, oven-polymerised at 180°C. Maximum roll diameter: 500mm on PACKLOG when adjusted to the lower position.

W.	Reference	Colour Code		
1310 (for min. W1500 workbench)	W01 008 0331	GC		



TRAY

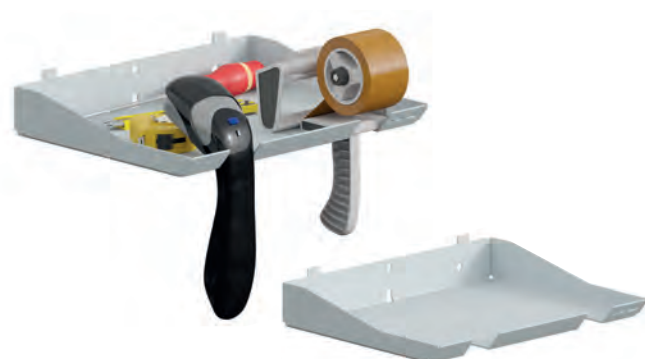
Made of folded sheet steel with a thickness of 20/10th. The shelves can be fastened by clipping into the grab container rails or screwed into the superstructure uprights and perforated panels.

The front edge has a height of 21mm, and the shelf depth is 220mm.

Max load: 10kg.

Finished with fine-textured structured epoxy powder paint, oven-polymerised at 180°C.

W.	D.	Reference	Colour Code		
340	250	W01 008 0334	GC		
510		W01 008 0335	GC		



MULTI-PURPOSE TRAY

Made of folded sheet steel, 20/10th thickness. The multi-function shelves can be fastened by clipping into the grab container rails or screwed into the superstructure uprights and perforated panels. Notches enable the attachment of a barcode scanner or adhesive tape dispenser.

The front edge has a height of 21mm.

Maximum load capacity: 10kg.

Finished with fine-textured structured epoxy powder paint, oven-polymerised at 180°C.

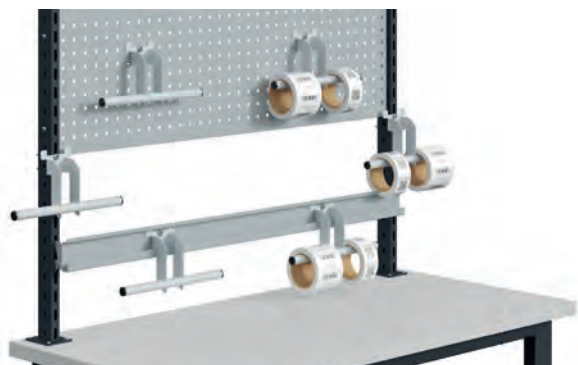
W.	D.	Reference	Colour Code		
330	240	W01 008 0302	GC		



25L BIN WITH SUPPORT

The overall dimensions are W340xD258xH344mm. The bin can be positioned widthwise or depthwise and is mounted to the workbench ladders, under the worktop. Multiple bins can be fixed side by side on the workstation for recycling purposes.

Reference	Colour Code		
W01 008 0349	GC		



DOUBLE LABEL DISPENSER

150mm wide on each side, with a diameter of 25mm.

It can be fastened to an upright, grab container rail, or perforated panel.

Finished with fine-textured structured epoxy powder paint, oven-polymerised at 180°C.

Reference	Colour Code		
W01 008 0301	GC		

BI	GA	GC
RAL 5015	RAL 7016	RAL 7035



LUMINAIRE WITH LIGHTING SUPPORT FOR FASTENING TO THE SUPERSTRUCTURE UPRIGHTS

The LED luminaire and lighting support assembly consists of the support and the luminaire. The luminaire is available in lengths of 860mm or 1290mm and is fastened to the plate using two screws. The plate is finished in light grey RAL 7035, with fine-textured structured epoxy powder paint, oven-polymerised at 180°C. The luminaire housing is finished in smooth light grey RAL 7035.

The luminaire features an on/off switch and a potentiometer for brightness adjustment. Power: 24W. Luminous flux: 4600 lumens. Colour temperature: 4000K. Dimmable from 20% to 100%. Supplied with a 3m cable and plug. Voltage: 230V.

Model	Reference	Colour Code		
Luminaire W860 for uprights W865	W01 008 0380	BI or GA or GC		
Luminaire W860 for uprights W1300	W01 008 0381	BI or GA or GC		
Luminaire W1290 for uprights W1300	W01 008 0384	BI or GA or GC		
Luminaire W1290 for uprights W1530	W01 008 0385	BI or GA or GC		
Luminaire W1290 for uprights W1760	W01 008 0386	BI or GA or GC		

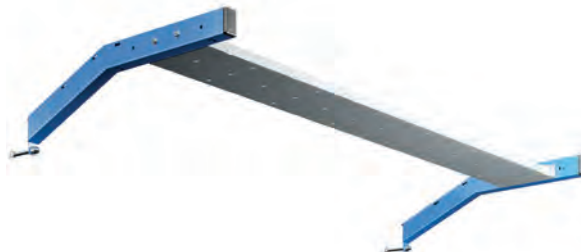


LIGHTING SUPPORT WITH 15W NON-DIMMABLE LED LUMINAIRE

The lighting support and LED strip assembly consists of the lighting support and an LED strip.

The luminaire can be fixed to the metal plate or mounted under the shelf with dividers. A switch allows the selection of either a 3000K or 4000K colour temperature. Luminous flux: 1500 lumens. Supplied with a 2m cable and plug. Direct connection to a 230-volt power supply.

Model	Reference	Colour Code		
W810 for uprights W865	W01 008 0387	BI or GA or GC		
W810 for uprights W1300	W01 008 0388	BI or GA or GC		
LED strip only	W01 008 0270			



LIGHTING SUPPORT WITH TILTING AND DEPTH ADJUSTABLE METAL PLATE

Luminaire support consisting of two arms made from 50x30mm steel tube and a metal plate for the luminaire.

The plate, finished in light grey RAL 7035, features pre-drilled holes for luminaire attachment and can tilt forward or backward in positions ranging from -15° to +15°. It is secured to the arms with screws and adjustable into three front-to-back positions in 60mm increments.

The two arms are mounted to the workbench uprights. The luminaire support can optionally accommodate up to two rails for trolleys: one in front of the plate and one behind. Finished with fine-textured structured epoxy powder paint, oven-polymerised at 180°C.

Model	Reference	Colour Code		
Lighting support W865 mm	W01 008 0376	BI or GA or GC		
Lighting support W1300 mm	W01 008 0377	BI or GA or GC		
Lighting support W1300 mm	W 01 008 0378	BI or GA or GC		
Lighting support W1760 mm	W01 008 0379	BI or GA or GC		



ADDITIONAL TUBULAR LED LIGHT

Magnetic fastening under the shelf or on an upright. Luminous flux, powerful and uniform. Connects directly to a 230-volt supply via a 2m-long cable. Watertight design.

Guaranteed for 50,000 hours of operation.

Light temperature: 5,000K

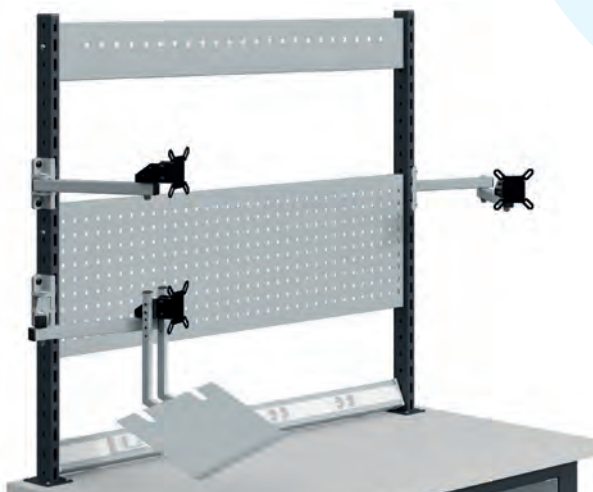
Model	W.	Diameter	Reference		
PMMA tube	520	20	W01 008 0178		
Polycarbonate tube	670	40	W01 008 0177		



RECLINED POWER STRIP WITH CIRCUIT-BREAKER

Very simple and quick to install, the strip includes fixing tabs for positioning at the back of the work surface. Three dimensions are available, providing different socket spacing solutions based on the intended use. It features 6 sockets (2 phases + Earth: 220V - 16A) and a 30mA differential circuit breaker. The bare cable output is 3G2.5, with a length of 3m. The body is made of an aluminum profile with rear mounting brackets and includes an operation indicator light.

Model	W.	Reference		
6 sockets 2P+E	615	W01 008 0246		
	860	W01 008 0247		
	1286	W01 008 0248		



MONITOR STAND - FOR UP TO 27-INCH DISPLAYS

Made of folded sheet steel with a thickness of 20/10th. For maximum 27-inch screens.

VESA mounting hole pattern 75/75mm or 100/100mm.

Fixed with screws to the superstructure uprights. The model without arms can be mounted on the uprights, perforated panels, or the grab container rail.

Arms made of steel tube with a section of 30x30mm. Lengths: short arm 80mm, long or double arm: 290mm per arm.

Finished with fine-textured structured epoxy powder paint, oven-polymerised at 180°C.

The VESA mounts are in smooth black RAL 9005.

Model	Reference	Colour Code		
Short arm	W01 008 0312	GC		
Long arm	W01 008 0313	GC		
Double arm	W01 008 0314	GC		
Without arm	W01 008 0329	GC		



MONITOR - KEYBOARD STAND: 15-27 INCHES

Made of folded sheet steel with a thickness of 20/10th. For maximum 27-inch screens.

VESA mounting hole pattern 75/75mm or 100/100mm.

Fixed with screws to the superstructure uprights. Arms made of steel tube with a section of 30x30mm. Lengths: short arm 80mm, long or double arm: 290mm per arm.

Keyboard stand dimensions: W550xD250mm, with an edge height of 20mm. The stand is made of steel tubes with a cross-section of 20x20mm and is height-adjustable, with a stroke of 60mm in 20mm increments.

Finished with a fine-textured structured epoxy powder paint, oven-polymerised at 180°C. The monitor fastening support is available in black only. Finished with fine-textured structured epoxy powder paint, oven-polymerised at 180°C.

The VESA mounts are in smooth black RAL 9005.

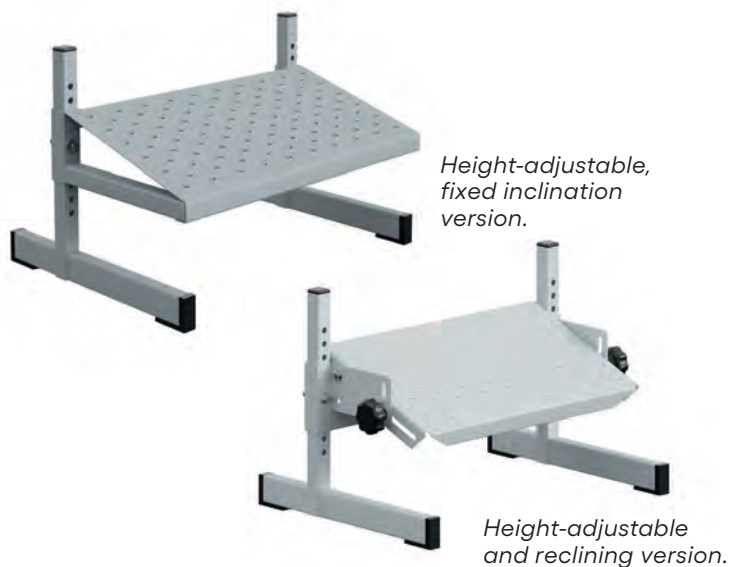
Model	Reference	Colour Code		
Short arm	W01 008 0315	GC		
Long arm	W01 008 0316	GC		
Double arm	W01 008 0317	GC		



ZEBRA PRINTER SLIDING SUPPORT STAND

Support stand designed to hold a ZEBRA printer. It fastens underneath the frame. Overall dimensions: W427xD588xH350mm. Features a fully extendable sliding shelf for easy access to the printer. Finished with fine-textured structured epoxy powder paint, oven-polymerised at 180°C.

Reference	Colour Code		
W01 008 0300	GC		



INDEPENDENT FOOT-REST

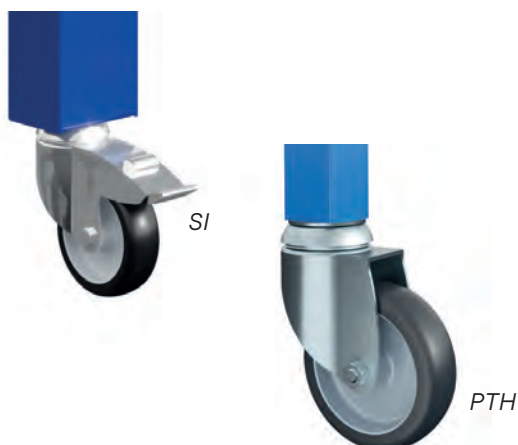
Made of folded sheet steel with a thickness of 12/10th (or 20/10th for the reclining version) and steel tubes with cross-sections of 40x20mm and 25x25mm. Features a non-slip surface and floor-levelling jacks.

Height adjustable from 70mm to 250mm above ground level.

The reclining version offers adjustable inclination from 0° to 20° and depth with a stroke of 85mm.

Finished with fine-textured structured epoxy powder paint, oven-polymerised at 180°C.

Model	W.	D.	Reference	Colour Code		
Fixed version	500	385	W01 008 0210	GC		
Reclining version			W01 008 0211	GC		



SETS OF 4 CASTORS

Set of 4 swivel thermoplastic grey anti-marking castors with a 100mm diameter tread, two of which are equipped with brakes, for workbenches. The SI model is compatible with fixed models, as well as mechanically or electrically height-adjustable models. The PTH model is compatible with both fixed and adjustable models.

Maximum load: 300kg for the set of 4 castors.

Model	Reference		
SI	W01 008 0242		
PTH	W01 008 0243		



SETS OF 4 JACKS

Set of 4 leveling jacks for workbenches. Stroke: 30mm. Maximum load: 500kg for the set of 4 jacks.

Model	Reference		
SI	W01 008 0239		
PTH	W01 008 0241		