

Grinding machine

SM 250



ZN der Bedienungsanleitung:

Erstellt am:

Erstellt von:

Datei:

5009027-01

04/2018

Konstruktion

K:\KDV\5009XXX\5009-Bedienungsanleitung-SM 250/
5009027-01_SM250_03-25_GB.doc

GÖLZ® GmbH

Dommersbach 51

D-53940 Hellenthal

Telefon: +49 (0) 2482 12 200 / Telefax: +49 (0) 2482 12 222

E-Mail: info@goelz.de / Internet: www.goelz.de

All rights reserved according to DIN ISO 16016.

No part of this document (instruction manual and spare parts list) may be reproduced, adapted, transmitted, transcribed, stored on a data medium or be translated into another language without prior written approval of

GÖLZ® GmbH
Dommersbach 51
53940 Hellenthal-Blumenthal

Guarantee

We reserve the right to amend any information included in this document (manual instruction and spare parts list) at any time and without prior notice.

GÖLZ® assumes no warranty for these documents.

GÖLZ® shall not be liable for errors in this document (manual instruction and spare parts list) or for any collateral or consequential damage in connection with shipment, performance or use of the material.

EU conformity declaration**GÖLZ® GmbH**

Dommersbach 51
D-53940 Hellenthal
Deutschland

declares under sole responsibility that

Model:	Grinding machine
Make:	GÖLZ
Type:	SM250

comply with the relevant provisions of the Directives

2006/42/EG	Machinery directive
2014/30/EU	Electromagnetic compatibility
2014/35/EU	Low Voltage
2005/88/EG	Noise emission

and has been developed and fabricated in compliance with the following standards valid as at the production date:

DIN EN 13862:2022-07	Safety of floor cutting-off machines
DIN EN ISO 12100 Corrigendum to 1:2013-08	Safety of machinery - General principles for design
DIN EN 60034-1:2011-02; VDE 0530-1:2011-02	Rotating electrical machines - Part 1: Rating and performance
DIN EN 60335-1:2024-07; VDE 0700-1:2024-07	Safety of household and similar electrical appliances
DIN EN ISO 13849-1:2023-12	Safety of machinery - Safety-related parts of control systems
DIN EN IEC 61000-3-2:2023-10; VDE 0838-2:2023-10 DIN EN 61000-3-3:2023-02; VDE 0838-3:2023-02	Electromagnetic compatibility (EMC)
DIN EN IEC 55014-1:2022-12; VDE 0875-14-1:2022-12 DIN EN IEC 55014-2:2022-10; VDE 0875-14-2:2022-10	Electromagnetic Compatibility
DIN EN 62841-1:2023-03; VDE 0740-1:2023-03	Electric motor-operated hand-held tools
DIN EN 60204-1:2019-06; VDE 0113-1:2019-06	Safety of machinery - Electrical equipment of machines

Technical documentation kept by:

GÖLZ® GmbH

Development and design

Year of construction and machine number are indicated on the unit.

Hellenthal, 07.03.2025
GÖLZ® GmbH


.....
Managing Director
Bernd Schmitz

Content

EU conformity declaration	4
Preface.....	7
1. Machine description.....	8
1.1 Intended use-description	8
1.2 Technical data	8
1.3 Shipment and provided accessory.....	9
1.4 Main parts.....	9
1.5 Safety devices	10
2. Basic safety instructions.....	11
2.1 Intended use.....	11
2.2 Operating range	11
2.3 Organisational measures.....	11
2.4 Selection and qualification of person	12
2.5 Safety instructions governing specific operational phases	13
2.6 Special work related to the maintenance and repair of the machine	14
2.7 Information about special risks with electrical energy	14
2.8 Gas, dust, steam, smoke	15
2.9 Noise	15
2.10 Illumination	15
2.11 Oils, greases and other chemical substances.....	15
2.12 Transport.....	16
2.13 Store.....	16
3. Preparing for Operation.....	17
3.1 Export checking	17
3.2 Installation	17
3.3 Grinding wheel	17
3.3.1 Mounting the grinding wheel.....	18
3.4 Water supply	18
4. Operation	20
4.1 Before starting the machine.....	20
4.2 Grinding process	21
4.3 Finish the grinding process.....	21
5. Maintenance	22
5.1 General	22
5.2 Machine.....	22
5.3 Grinding wheel	22
6. Troubleshooting	23

7. Spare parts list.....	24
7.1 Using the spare parts list	24
7.1.1 Safety regulation.....	24
7.1.2 Ordering information.....	24
7.1.3 Distribution agencies	25
7.2 Wearing parts	26
8. Exploded view and spare parts list.....	27
8.1 Holm.....	27
8.2 Motor plate	29
8.3 Undercarriage.....	31
8.4 Grinding tool holder	32
9. Wiring diagram.....	33

Preface

This operating manual is designed to familiarize the user with drill rig, hereinafter referred to as the machine, and to use its intended applications.

The operating manual contains important information on how to operate the machine safely, properly and most efficiently. Observing these instructions helps to avoid danger, to reduce repair costs and downtimes and to increase the reliability and the life of the machine.

This operating manual is to be supplemented by the respective national rules and regulations for accident prevention and environmental protection.

The operating manual must always be available wherever the machine is in use.

It is to be read and applied by any person in charge of work with or on the machine, such as:

- **Operation** including setting up, troubleshooting in the course of work, elimination of manufacturing waste, care and disposal of fuels and consumables.
- **Servicing** (maintenance, inspection, repair) and/or
- **Transport**

In addition to the operating manual and to the mandatory rules and regulations for accident prevention of the country and place of use of the machine, the recognized technical rules for safe and proper working conditions and procedures are also to be observed.

In this manual all the information required for the intended use of the unit is included. If though you have any specific questions, please refer to your representative, to one of our sales representatives or directly to us:

GÖLZ® GmbH

Dommersbach 51, D-53940 Hellenthal

Telefon: +49 (0) 2482 12 200 / Telefax: +49 (0) 2482 12 222

E-Mail: info@goelz.de / Internet: www.goelz.de

Warning signs and symbols



Wear safety glasses!



Wear ear muffs!



Wear hard hat!



Wear dust protection!



Wear safety boots!



Read owner's manual before first initiation!



Wear safety gloves!



Wear safety clothes!



Never touch!



Important advice!



General danger!



Danger exists to cut oneself!



Electrical Hazard!



It is not allowed to move the machine with rotating grinding wheel outside of the area in which grinding works have to be performed.

1. Machine description

1.1 Intended use-description

The SM250 is a floor grinding machine with a working width of 250 mm. With its extremely narrow design, its field of application lies mainly in the processing of concrete surfaces of small and medium sizes.

The floor grinder may only be operated with the grinding tools specified by the manufacturer with the required nominal characteristics. When using grinding tools that do not comply with the manufacturer's instructions, no liability is accepted for damage resulting therefrom. The SM250 is equipped with a 230V / 50Hz AC-motor and may only be operated on a corresponding permissible and tested power supply.

1.2 Technical data

Working width	250 mm
Max. grinding wheel-Ø	250 mm
Grinding wheel holder	Ø 18 mm / 4 X M 12
Motor	single-phase AC motor S1, 220 - 240 V 50 Hz, 2,2 KW IE 2
Power input engine	I (max) = 12,1 A
Peripheral speed gringing wheel	19 m/s
Engine shaft speed	1440 min ⁻¹
Feed	manuel
Excavation	manuel with handlebar
Water supply	external water supply
Dust extraction	connecting piece Ø a 50 mm
Dimensions (LxWxH)	approx. 790 x 460 x 665 mm
Weight (without grinding wheel)	Ca 60 kg
Sound power level after DIN ISO 6393	No load = 75 dB(A) Full load = 76 dB(A)
Sound pressure level afterDIN ISO 6393	No load =78 dB(A) Full load =79 dB(A)
Vibration ISO 5349 VDMA 03/2006	a = 5,3 m/s ²

1.3 Shipment and provided accessory

- Grinding machine SM 250
- Tool kit
- Operating instruction and spare parts list grinding machine

For the item number of accessories, please refer to the current catalogue of **GÖLZ®**

If accessories are used which do not correspond to **GÖLZ®** specifications, no liability is assumed for any damage resulting hereof.

For details regarding the selection of the right **GÖLZ®** diamond blades, please refer to the current **GÖLZ®** catalogue for diamond tools.

1.4 Main parts

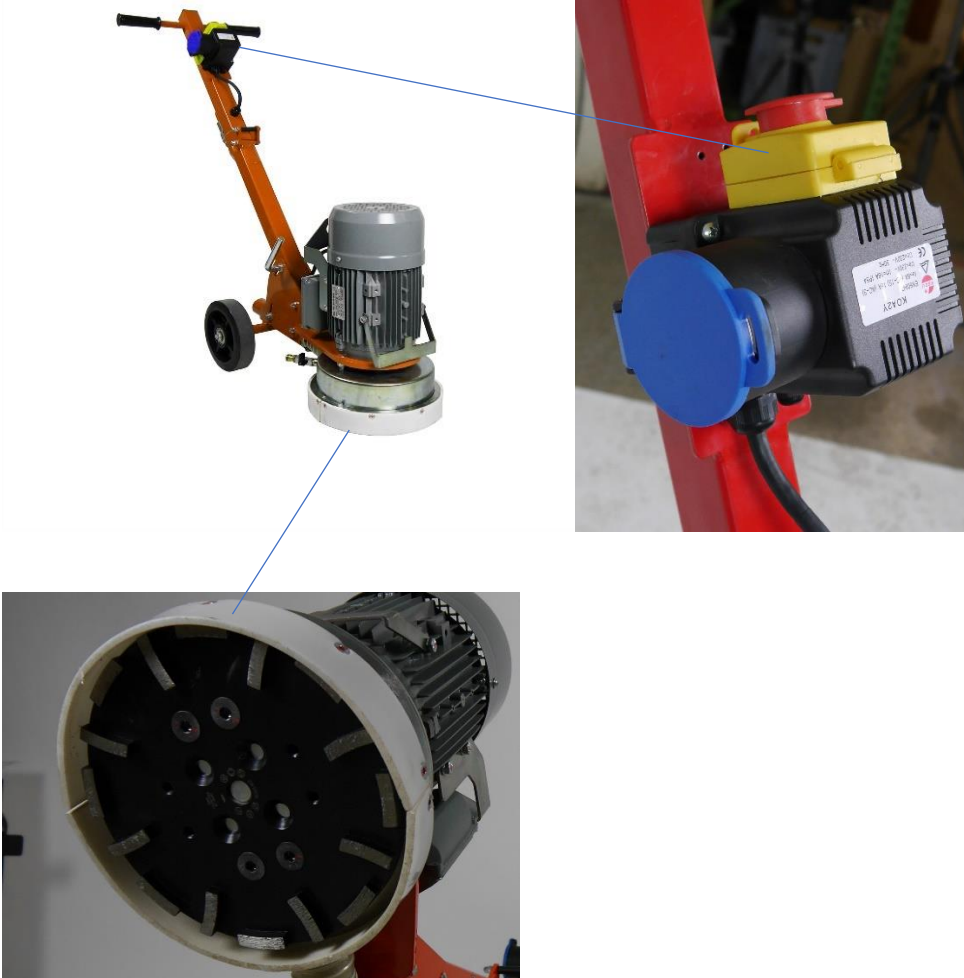


- | | |
|-------------------------------------|----------------------|
| 1. Motor plate | 8. Handle |
| 2. Undercarriage | 9. ON/OFF switch |
| 3. Height compensation adjustment | 10. Lifting eye |
| 4. Dust extraction connecting piece | 11. Motor |
| 5. Holm height adjustment | 12. Front handle |
| 6. Retractable holm | 13. Protection guard |
| 7. Power connection | 14. Water supply |

1.5 Safety devices



Danger: During grinding or displacing the machine, all safety devices shown below must be mounted!



2. Basic safety instructions

In this manual the following terms and symbols are used for particular important information:



Note / Important: Contains important information which stands out from the other text!



Attention: Contains instructions which must be strictly observed to prevent damage from the unit and the operator!

Important text passages are highlighted in italics or bold or can be found in a grey highlighted text field.

2.1 Intended use

The machine has been built in accordance with state-of-the-art standards and the recognized safety rules. Nevertheless, its use may constitute a risk to life and limb of the user or of third parties, or cause damage to the machine and to other material property.

The machine must only be used in technical perfect condition in accordance with its designated use and the instructions set out in the operating manual, and only by safety-conscious persons who are fully aware of the risks involved in operating the machine. Any functional disorders, especially those affecting the safety of the machine, should therefore be rectified immediately!

The machine is designed exclusively for horizontal grinding. Using the machine for purposes other than mentioned above is considered contrary to its designated use. The **GÖLZ® GmbH** cannot be held liable for any damage resulting from such use. The risk of such misuse lies entirely with the user.

Operating the machine within the limits of its designated use also involves observing the instructions set out in the operating manual and complying with the inspection and maintenance directives.



Attention: Read and observe all the operating instructions which belong to this unit!

2.2 Operating range

Do not modify, add components to or retrofit the unit in a way which could affect its safety and do not use non-official accessories! This is not allowed without prior approval of **GÖLZ® GmbH**!

2.3 Organisational measures

This operating manual must always be at hand at the place of use of the machine and must be accessible to the person operating the machine!

In addition to this operating manual, all other generally applicable legal and other mandatory regulations relevant to accident prevention and environmental protection must be observed! Such obligations may also comprise the handling of hazardous materials, provisioning and/ or wearing of personal protective equipment, or road traffic regulations.

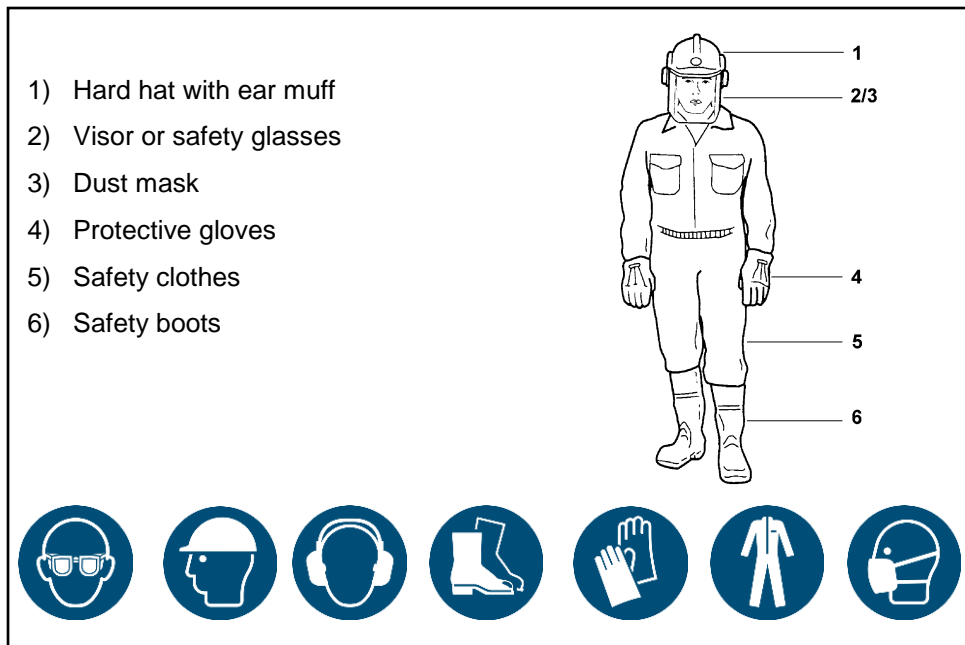
This operating manual must be supplemented by instructions covering the duties involved in supervising and notifying special organizational features, such as job organization, work flows or the person entrusted with the work. Person entrusted with work on the machine must have read the operating manual prior to taking up work. This applies especially to persons working only occasionally on the machine, e.g. during set-up or maintenance activities.

Check - at least from time to time - whether the personnel is carrying out the work in compliance with the operating manual and paying attention to risks and safety-relevant factors.

For reasons of safety, long hair must be tied back or otherwise secured, garments must be close-fitting and no jewellery - including rings - may be worn.

Severe injury may result from being caught by moving parts of the machine. Personal protective equipment must be used wherever required by the circumstances or by law (e.g. safety glasses, ear protectors, safety boots, suitable safety clothing). Observe the regulations for prevention of accidents! Observe all safety precautions and warnings attached to the machine and always keep them in good and perfectly legible condition.

The personal protection equipment should consist of the following parts:



In case event of safety-relevant modifications or changes in the behaviour of the machine, stop the machine immediately and report the malfunction to the competent authority/ person. Do not remove or make inoperative any safety devices the machine is equipped with.

Never make any modifications, additions or conversions which might affect safety without **GÖLZ® GmbH** prior approval! This also applies to the installation and adjustment of safety devices as well as to welding and cutting work on supporting structures.

Damaged or worn parts of the product must be replaced immediately. Use genuine spare parts only.

All spare parts and tools must comply with the technical requirements specified by the manufacturer/ distributor. Adhere to the legally prescribed preventive maintenance and inspection intervals or those specified in this operating manual!

Hydraulic hose pipes must be changed within the specified or appropriate intervals, even if no safety-relevant defects are visible.

All maintenance and repair activities must be performed by qualified personnel using suitable tools and other suitable workshop equipment. Observe the fire alarm and fire fighting measures. The personnel must be made familiar with the location and handling of fire extinguishers!

2.4 Selection and qualification of person

Only permitted personnel is allowed to work on and with the machine! The legal minimum age is to be observed!

Only assign trained and instructed personnel! Clearly define the responsibilities of the personnel with regard to operating, setting-up, maintaining and repairing the machine! The **GÖLZ® GmbH** can assist you in training your personnel.

Make sure that only instructed and competent personnel works on the machine. Define the responsibility of the machine operator, also in terms of traffic regulations and enable him to refuse instructions of third parties which breach safety regulations.

Personnel that is to be trained or to be instructed or that is serving a general training is only to be permitted to operate the machine under the supervision of an experienced person.

To operate the machine you must be rested, in good physical condition and mental health. If you have any condition that might be aggravated by strenuous work, check with your doctor before operating with the machine. Do not operate the machine if you are under the influence of any substance (drugs, alcohol) which might impair vision, dexterity or judgment.

Works on electrical, pneumatic, combustion and hydraulic fittings and equipment are only to be carried out by qualified personnel or instructed people being directed and supervised by qualified personnel in compliance with the respective rules!

2.5 Safety instructions governing specific operational phases

Before work

Avoid any operational mode that might be prejudicial to safety!

Before beginning work, familiarize yourself with the surroundings and circumstances of the site, such as obstacles in the working and travelling area, the soil bearing capacity and any barriers separating the construction site from public roads.

Take the necessary precautions to ensure that the machine is used only when in a safe and reliable state. Operate the machine only if all protective and safety-oriented devices, such as removable safety devices, emergency shut-off equipment, sound-proofing elements and exhausters, are in place and fully functional.

Regard all safety specifications!

Check the machine at least once per working shift for obvious damage and defects. Report any changes (incl. changes in the machine's working behaviour) to the competent organization/ person immediately. If necessary, stop the machine immediately and lock it. Have any defects rectified immediately. At any time, ensure the operator has sufficient view to his working area, in order to have intervention to the working process.

Wet grinding or dry grinding with dust extraction is to be accomplished while working. This prevents the appearance of particulate matter and increases the life-time of the grinding tool.

During start-up and shut-down procedures always watch the indicators in accordance with the operating instructions!

Before starting or setting the machine in motion, make sure that nobody is at risk. Keep children and unauthorized persons away from the work area.

Noise protection equipment on the unit must be in protective position during operation. Wear the required individual ear protection!

Always keep at a distance from the edges of building pits and slopes. Avoid any operation that might be a risk to machine stability! Keep the work area clean. Cluttered areas and benches invite injuries! Do not operate when you are tired! Watch what you are doing! Risk of stumbling! Cables and hoses must complete rolling up. After assembly do not leave any tools, a wrench for example, on the unit.

Check to see that the tools are removed from the machine before operating! Damaged grinding wheels have to be changed immediately. Use only recommended grinding wheels from the **GÖLZ® GmbH**.

Control the working area for water-, gas- and electrical lines!



Important: Wet grinding or dry grinding with dust extraction is to be accomplished while working. This prevents the appearance of particulate matter and increases the life-time of the grinding tool.

During work

Make sure, that the machine is well fastened before and while grinding!

Never touch rotating parts like grinding wheels!

After work

Before leaving the machine always secure it against unauthorized use!

2.6 Special work related to the maintenance and repair of the machine

Observe the adjustment, maintenance and inspection activities and intervals set out in the operating instructions, including information on the replacement of parts and equipment! These activities may be executed by skilled personnel only.

Brief operating personnel before beginning special operations or maintenance work, and appoint a person to supervise the activities.

In any work concerning the operation, conversion or adjustment of the machine and its safety-oriented devices or any work related to maintenance, inspection and repair, always observe the start-up and shut-down procedures described in the operating instructions and the information on maintenance work. Ensure that the maintenance area is adequately secured.

Carry out maintenance and repair work only if the machine is positioned on stable and level ground and has been secured against inadvertent movement and buckling. If the machine is completely shut down for maintenance and repair work, it must be secured against inadvertent starting.

To avoid the risk of accidents, individual parts and large assemblies being moved for replacement purposes should be carefully attached to lifting tackle and secured. Use only suitable and technically perfect lifting gear and suspension systems with adequate lifting capacity. Never work or stand under suspended loads.

The fastening of loads and the instructing of crane operators should be entrusted to experienced persons only. The marshaller giving the instructions must be within sight or sound of the operator.

For carrying out overhead assembly work always use specially designed or otherwise safety-oriented ladders and working platforms. Never use machine parts as a climbing aid. Wear safety harness when carrying out maintenance work at greater heights.

Clean the machine, especially connections and threaded unions, of any traces of oil, fuel or preservatives before carrying out maintenance / repair. Never use aggressive detergents. Use lint-free cleaning rags.

Before cleaning the machine with water, steam jet or detergents, cover or tape up all openings which -for safety and functional reasons - must be protected against water, steam or detergent penetration.

Do not clean the machine with a high-pressure cleaner. The hard water jet can put damage to parts of the machine. After cleaning, remove all covers and tapes applied for that purpose.

After cleaning check the machine for loose connections, chafe marks and damage! Have identified defects repaired immediately!

Always tighten any screwed connections that have been loosened during maintenance and repair.

Any safety devices removed for set-up, maintenance or repair purposes must be refitted and checked immediately upon completion of the maintenance and repair work. Ensure that all consumables and replaced parts are disposed of safely and with minimum environmental impact.

2.7 Information about special risks with electrical energy

Observe the relevant national regulations or standards. Electrical connections must always be kept free from dirt and moisture.

Use only original fuses with the specified rating! Switch off the machine immediately, if trouble occurs in the electric power supply!

If your machine comes into contact with a live wire:

- warn others against approaching and touching the machine
- have the live wire de-energized

When working with the machine, maintain a safe distance from overhead electric lines. If work is to be carried out close to overhead lines, the working equipment must be kept well away from them. **Caution, danger to life!**

- Check out the prescribed safety distances.
- Work on the electrical system or equipment may only be carried out by a skilled electrician himself or by specially instructed personnel under the control and supervision of such electrician and in accordance with the applicable engineering rules.
- If provided for in the regulations, the power supply to parts of machines and plants, on which inspection, maintenance and repair work is to be carried out must be cut off.
- Before starting work, check the de-energized parts for the presence of power and ground or short-circuit them in addition to insulating adjacent live parts and elements.

The electrical equipment of machines is to be inspected and checked at regular intervals. Defects such as loose connections or scorched cables must be rectified immediately.

Necessary work on live parts and elements must be carried out only in the presence of a second person who can cut off the power supply in case of danger by actuating the emergency shut-off or main power switch. Secure the working area with a red-and white safety chain and a warning sign. Use insulated tools only.

If mobile electrical equipment, connecting cables and/ or extension/ appliance cords with plug connectors are used, ensure that such equipment, cables and cords are checked for correct function at least once every six months by a qualified electrician or - if suitable testing equipment is available - by a properly instructed person.

Protective installations with fault-current protection units used in non-stationary equipment must be checked for correct operation at least once a month by a properly instructed person.

Fault-current and fault-voltage protection units must be checked for correct operation by actuating the testing facility:

- once on every working day in the case of mobile equipment,
- at least once every six months in the case of stationary equipment.

2.8 Gas, dust, steam, smoke

Operate combustion engines only in well-ventilated rooms! Before starting the unit in closed rooms, make sure that the room is sufficiently ventilated and use the exhaust gas hose!

Welding, burning and grinding operations on the machine are only to be carried out if this is explicitly authorized (there is the danger of fire and explosion)!

Before welding, burning and grinding operations clean the machine and its surrounding area from dust and flammable substances and care for sufficient ventilation (danger of explosion)!

When working in confined spaces observe any existing national regulations!

2.9 Noise

During operation sound protection devices on the machine must be in safe position. Wear the prescribed personal ear protection! (UVV 29 § 10, Article 29 of the Accident Prevention regulations).

The use of noise emitting machines may be restricted to certain times by national or local regulations.

2.10 Illumination

The machine is designed for use in daylight! The machine operator / owner must ensure sufficient workplace lighting for non-illuminated work sites!

2.11 Oils, greases and other chemical substances

When handling hydraulic fluids, lubricants, greases or preservatives (referred to hereinafter as fuels and lubricants), the safety regulations which apply to the respective machine are to be observed!

Avoid long contact of the fuels and lubricants with your skin! Careful cleaning of the skin from adhering fuels and lubricants is necessary.

Be careful when handling hot consumables (risk of burning or scalding) particularly at liquid temperatures above 60°C, avoid any skin contact with these liquids!

If you get fuels or lubricants in your eyes, rinse them immediately and carefully with potable water. Then consult a doctor.

Remove flown out fuels and lubricants immediately! Therefore use a binder.

Fuels and lubricants must not seep into the soil or into the public sewage system! Fuels and lubricants which can no longer be used are to be collected, properly stored and to be properly disposed of.

The respective regulations and laws for handling fuels and lubricants which are valid in the country of use are to be observed and adhered to. This also applies to the disposal of such fuels and lubricants. To inform yourself turn to the responsible authorities.

2.12 Transport

Use only suitable means of transport and lifting gear of sufficient capacity when loading or transporting the machine! Appoint an experienced instructor for the lifting operation!

Always observe the instructions given in the operating manual when lifting the machine (use only the prescribed lifting eyes for attaching the lifting gear)!

Use only suitable transport vehicles with sufficient load capacity! Secure the load carefully. Use suitable fastening points for securing!

Before loading the machine or parts of it, secure the machine against inadvertent movement! Attach a suitable warning sign!

Before using the machine again, make sure that such protection material or devices are properly removed!

Parts which had to be removed for transporting of the machine must be refitted and secured carefully before the machine is used again!

Before setting the machine in motion always check that all accessories are safely stowed.

The recommissioning procedure must be strictly in accordance with the operating instruction! Observe the instructions given in the operating instruction when reassembling and operating the machine.



Attention: Check that all parts of the machine are well fastened before transporting. For loading, only use lifting gear and tackle of sufficient capacity.



It is not allowed to move the machine with rotating grinding wheel outside of the area in which grinding works have to be performed.



Injury hazard: Down coming parts!

2.13 Store

Store the machine in a dry, high or locked place, out of the reach of children or unauthorized persons. Clean and preserve the machine with corrosion preventive if storing over a longer time like winter time!

Note: Store dismounted grinding wheels so, that the grinding wheels not exposed to mechanical damages and harmful environmental conditions (UV radiation, temperature, humidity, etc.).

3. Preparing for Operation

3.1 Export checking

Remove the transport packaging and dispose of it in an environmentally responsible way. Check the machine for completeness and intactness. For the scope of delivery, see "Scope of delivery and provided accessory".

Secure the machine against accidental start-up and rolling away.



Attention: Read and observe all operating instructions which are relevant for the machine!

3.2 Installation

Place the machine on an even, firm and stable ground.

Have the working area well lightened. Keep the working area clean, cluttered areas invite injuries. Operating the machine on enclosed premises, make sure that there is sufficient ventilation. Observe the regulations in force at the respective site.

3.3 Grinding wheel

The grinding wheels must meet the specification of **GÖLZ® GmbH**. Use the corresponding grinding wheels depending on the material to be processed, the machining process and the type of work to be performed! When not used properly, no liability is assumed for damages resulting therefrom.

All used grinding wheels must be designed, regarding their maximum admissible speed, for the max. drive speed of the machine. For machines with variable drive speed, use grinding wheels which, regarding their maximum admissible speed, correspond to the respective maximum drive speed of the machine. Never use faulty or damaged grinding wheels. Check the correct rotation of the grinding wheels on the protection guard! Check the grinding wheel is well fastened before beginning to operate. Defective grinding wheels must be replaced immediately!

Cut off the engine or disconnect the power supply before mounting or changing grinding wheel. After mounting, do not leave any tools, such as open-end spanners, on the machine.

Use only grinding wheels suitable to the grinding wheel acceptance (arbor hole, flanges).



Danger: Faulty or damaged grinding wheels can cause injuries to the operator and other persons!



Information: Wrong rotation of the grinding wheel will result in more wear of the grinding wheel!



Danger: Wrong rotation of the grinding wheel may result in segments cracking off and can cause injuries to the operator or other persons!

3.3.1 Mounting the grinding wheel

Grinding wheel mounting:

- Mount the grinding wheel to the manufacturer's odds (Observe the min. flange-Ø; use only original screws or nuts).
- Use only grinding wheel diameters which are allowed by the manufacturer.



Information: Clean all fastening devices of the grinding wheel (flanges, thread of the grinding shaft, screws and nuts) before mounting the grinding wheel!

After confirming that the machine is stationary and disconnected from the mains, fold in the handlebar and place the machine over the landing gear in the vertical position. Then loosen and unscrew the 4 countersunk screws using the supplied tool, place the grinding wheel on the guide, center it with the countersunk screws and tighten crosswise. Make sure that both the grinding wheel holder and the grinding wheel are free from contamination before assembly. (If necessary, clean with a cloth) After installation, check whether the grinding wheel rotates freely and does not come into contact with the grinding wheel protection cover. Then return the machine to the working position.



Danger: It is not allowed to operate the machine without protection guard!

3.3.2 Height compensation of the grinding wheel



After every assembly or change of the grinding tools, make sure that they are parallel to the floor surface in the working position of the machine. Otherwise, the subsequent grinding pattern may be insufficient and increased wear of the grinding tools may occur.

It is also possible that the grinding machine is difficult to guide.

Loosen the bolt connection of the height adjustment on the chassis and adjust it to the correct height. Then tighten the connection again.

3.4 Water supply



Important: The operation is to be carried out in wet grinding or in dry grinding with dust extraction, in order to prevent the occurrence of harmful particulate matter and to increase the lifetime of the grinding tool.



Attention: Tools which are only designed for wet cutting technique, must never be used without water supply! Always make sure that there is enough water supply!

The supply of water at the grinding ensures that the tool is cooled, the dust of the material is bound and the cut is rinsed out..



Attention: Use only water for grinding which is free from coarse impurities! Do not use salt water!

3.5 Dust extraction



Attention: Tools designed for dry grinding must never be used without dust extraction. Grinding dusts are harmful to health.

Use only one powerful and suitable one in dry grinding operation Vacuum cleaner. You can ask the manufacturer of the floor grinding machine for information about the suitable suction pad selection.

Connect the vacuum cleaner to the suction connection of the grinding machine and switch it on. Then start the grinding machine as described and start the grinding process. Make sure that the filters of the vacuum cleaner do not become clogged during grinding operation so that sufficient dust extraction is ensured at all times.

A clogging of the filter can be done primarily when grinding floors with an increased moisture content.

When finishing the grinding process, first switch off the grinding machine and then the vacuum cleaner.

4. Operation



Information: Unconditional observe the owner's manual of the engine manufacturer!



Danger: Never touch rotating parts like grinding wheel!

4.1 Before starting the machine

Check the machine for safe operating condition.

- All components must be properly mounted.
- Do not make any changes on operating elements and safety devices.

The machine may only be operated in safe operating condition.

Lock the handlebar so that the machine can be operated in a favorable posture.

If work is carried out where harmful or explosive substances, such as dust, sludge occur, observe the applicable national regulations.

If there is a risk that, during the grinding process, material particles are accelerated outwards, wear safety goggles.



Danger: Demolition parts can cause injuries to the operator while cutting!

When travelling on public roads, ways and places always observe the valid traffic regulations and, if necessary, make sure beforehand that the machine is in a condition compatible with these regulations.

After operating secure the machine against unintentional moving.



Danger: The sound pressure may exceed 85 dB(A)!

Appropriate to the application of the machine it could be necessary to wear further protective equipment.



Danger: Down coming parts at the building site can cause injuries to the operator!

The working area is reserved only for the operator. Keep unauthorized persons out of the working area. Make sure the operator always has well sight to the working area. He always has to intervene in the working process. Never operate the machine without mounted safety devices.

Careless handling can lead to life-threatening injuries caused by the rotating grinding wheel. Only operate the machine with fully mounted protection guard.

Nobody is allowed to remain in the working area nor in the area where falling segments of the grinding wheel can be accelerated outwards (minimum safety distance 10m). If this safety distance cannot be respected, the danger zone must be closed or be marked by warning signs.

Care for the whereabouts of cooling and rinsing water as well as of grinding sludge.

Grinding sludge must be collected, filtered and disposed of.

4.2 Grinding process



It is not allowed to move the machine with rotating grinding wheel outside of the area in which grinding works have to be performed.

In the dry grinding process, first switch on the dust extraction before switching on the grinder. In the wet grinding process, before starting the grinder, open the shut-off valve of the water supply and regulate the desired amount of water.

Then press the handles on the handlebar so that the grinding wheel does not come into contact with the ground and engage the motor of the grinding machine on the switch / plug combination. Slowly lower the grinder again so that the grinding wheel gets in contact with the ground to be ground and begin the grinding process.

You can now grind either in a straight line or in the right / left pendulum method. The grinder can be pushed as well as pulled. Depending on the work experience and after the selection of the grinding tool, the grinding pattern changes.

The removal depth is determined by the feed rate that the operator specifies during grinding. A faster feed means less material removal and working depth, a lower feed means greater material removal or working depth.



Danger: When grinding, make sure that you do not drive the grinding wheel over the connecting cable and damage it. RISK OF DEATH!

4.3 Finish the grinding process

To stop the grinding process, lift the grinding wheel off the ground again using the handle and the handlebar, switch off the machine at the switch / plug combination and wait until the grinding machine drive motor has come to a standstill. Then return the machine to the working position and close the shut-off valve of the water supply or switch off the dust extraction.

5. Maintenance

5.1 General



Information: Clean the machine after every operation. Observe local environmental regulations!

For maintenance jobs the machine has to be shut down. For maintenance jobs which must be done while the machine is running, the blade has to be dismounted before beginning the job.

In accordance to the given cycles, the subsequently described maintenance work has to be enforced. Also the wearing part subject to no certain maintenance-intervals has to be checked regularly for wear and to adjust if necessary or to exchange..

		Before starting work	After work	Weekly	Yearly	In the event of a malfunction
Complete machine	Visual inspection (condition)	X			X	X
	clean		X			
Grinding wheel holder	clean			X		
Fan cover motor	check	X		X		X
	clean		X			
Wasserdüsen	clean		X			
Tool	check	X				X
	clean		X			
	replace				X	

5.2 Machine

Clean the machine after each duty and check all functions. Replace all necessary parts that are out of order or worn out immediately.

5.3 Grinding wheel

When ending a grinding job - check grinding wheel as follows:

Check segments for cracks or break-outs, Cracks between segment and core barrel, Deformation and out of round wear.

In case of doubt, send the grinding wheel for repair.

6. Troubleshooting



Attention: In the event of changes in the behaviour of the machine during operation, stop the machine immediately and report the malfunction to the competent authority/person!

Problem	Cause	Remedy
Motor		
Engine does not start!	Stromnetz faulty	Have the power supply checked
	Connection cable damaged	Replace connecting cable
	Motor defekt	Replace the engine
Engine stops	Too high feed rate	Reduce feed rate
Grinding process		
No performance when grinding,	Wrong tool selection	Recommendation for use Observe the grinding tools of the manufacturer
Grinding wheel runs out of round	Imbalance of the grinding wheel	Replace grinding wheel
Too much dust	No dust extraction	Use a suitable vacuum cleaner
	Filter of the vacuum cleaner dirty	Clean the filter of the vacuum cleaner
	Suction hood defective	Replace the suction hood
Wear of the grinding wheel too high	wrong grinding wheel	Use a harder grinding wheel
	Insufficient cooling	Increase the amount of cooling water or use dust extraction
Segments come off	Cutting disc overheated, not enough water	Reseal segments; Optimize cooling water supply
No performance when grinding, grinding wheel is dull	overheated	Optimize cooling water supply
	wrong cutting wheel	Use the correct grinding wheel
	Diamonds on the segments are dull	sharpen
Sanding is not optimal	Wrong grinding tool selection	Recommended use Observe the grinding tools of the manufacturer
	Feed motion too fast	Reduce feed rate
	Imbalance in the motor shaft	Replace the engine

7. Spare parts list

7.1 Using the spare parts list

The spare parts list is not a mounting or dismounting instruction. The only purpose of the spare parts list is to easily and quickly find spare parts which can be ordered with distribution agencies, see chapter 7.1.3 "Distribution agencies".

7.1.1 Safety regulation



Danger: Mounting or dismounting assembly groups can give rise to risks which are not mentioned in the spare parts list!

Using this spare parts list for mounting or dismounting purposes is not permitted. For assembly and disassembly work exclusively the corresponding descriptions in this operating manual are to be followed.







Danger: Non-observance of this instruction can result in injury which, in the worst case, can result in death!

7.1.2 Ordering information



Note: In order to avoid wrong deliveries the information the ordering information should be checked for accuracy and completeness before sending it! Completely indicate the delivery address!

GÖLZ GmbH			
D-53940 Hellenthal ☎ 02482/120			
Typ	Masch.-Nr.	Baujahr	Gew. Kg
SM 250			60
Hz	Volt	kW	
50	230	2,2	
			

		
So bekommen Sie schnell und richtig Ihr Ersatzteil	Always indicate	Pour obtenir rapidement les pièces de rechange indiquer
<ul style="list-style-type: none"> Maschinentyp gemäß Typenschild Baujahr gemäß Typenschild Artikelnummer gemäß Ersatzteilliste Maschinennummer gemäß Typenschild 	<ul style="list-style-type: none"> machine type according to nameplate year of manufacture according to nameplate order number according to spare part list serial number according to nameplate 	<ul style="list-style-type: none"> type de la machine conforme de plaque d'identification Année de construction selon plaque d'identification Numéro de l'article selon la liste des pièces de rechange numéro de la machine conforme de plaque d'identification
Für Bestellungen, Fragen und Informationen wenden Sie sich bitte an die zuständigen Stellen.	For orders, questions and information, please contact the competent departments.	Pour les commandes, questions et informations, veuillez-vous adresser aux points de ventes correspondants.

7.1.3 Distribution agencies

Deutschland – Germany - Allemagne GÖLZ® GmbH Dommersbach 51 53940 Hellenthal Tel: +49 (0)2482-120 Fax: +49 (0)2482-12135 E-mail: info@goelz.de / Internet: www.goelz.de	
Österreich - Austria - Autriche GÖLZ® Ges.m.b.H Samstrasse 52 A-5020 Salzburg Tel: +43 (0) 662 - 43 81 75 Fax: +43 (0) 662 - 43 07 34 E-mail: info@goelz.at / Internet: www.goelz.at	Frankreich - France - France GÖLZ® S.A.S. 1, rue de la Mairie F-67370 Berstett Tel: +33 (0)3.88.59.43.00 Fax: +33 (0)3.88.59.47.77 E-mail: info@golz.fr / Internet: www.golz.fr
Grossbritannien - Great Britain - Grande-Bretagne GÖLZ® (UK) Ltd. Unit A5, Springhead, Enterprise Park Northfleet Kent DA11 8HB Tel: +44 1 474321679 Fax: +44 1 474321477 E-mail: info@goelz.co.uk / Internet: www.goelz.co.uk	Benelux GÖLZ® Benelux Eupener Straße 61 4731 Raeren-Eynatten Tel: +32 (0) 47 54 71 799 Fax: +32 (0) 13 78 33 28 E-mail: benelux@goelz.de / Internet: www.goelz-online.com
Australien - Australia - Australie GOLZ® Pty Ltd. 44 Stanley Street Peakhurst, NSW 2210 Tel: +61 (0) 2 9534 5599 Fax: +61 (0) 2 9534 5588 E-mail: info@golz.com.au / Internet: www.golz.com.au	USA GOLZ® L.L.C. 5860 East Osage Ridge Lane Columbia MO 65203-6018 Tel: +1 573 474 4961 E-mail: info@golzusa.com Internet: www.goelz-online.com

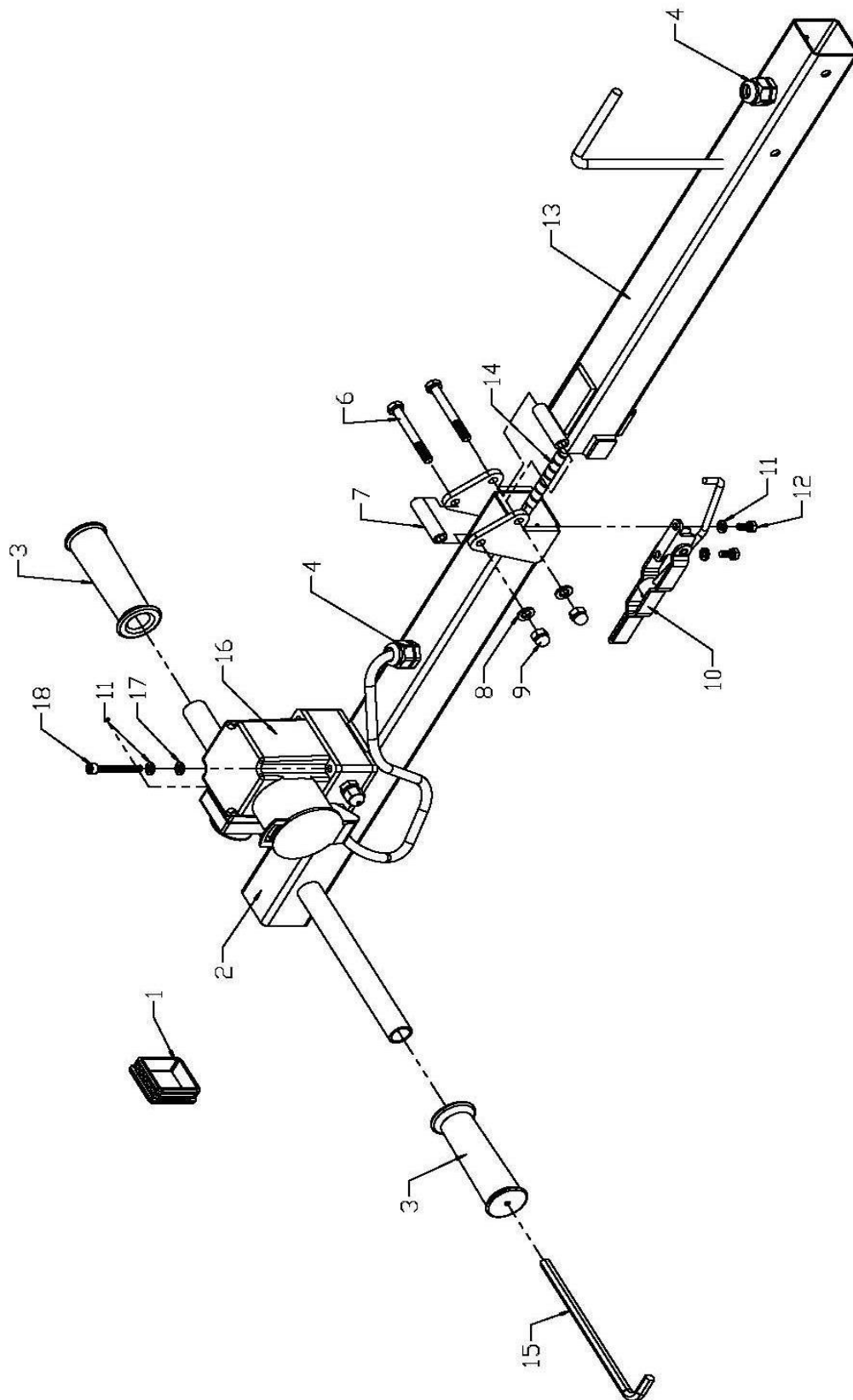
7.2 Wearing parts

Wearing parts for construction devices mentioned in the operating manual such as drilling and sawing machines.

Wearing parts are the parts subject to operation-related (natural) wear during proper use of the device. The wearing time cannot be uniformly defined, and differs according to the intensity of use. The wearing parts must be adjusted, maintained and, if necessary, replaced for the specific device in accordance with the manufacturer's operating manual. Operation-related wear is not a reason for defect claims.

Wearing parts of this machine are grey marked in the spare parts list.

- Feed and drive elements such as toothed racks, gearwheels, pinions, spindles, spindle nuts, spindle bearings, cables, chains, sprockets, belts
- Seals, cables, hoses, packings, connectors, couplings and switches for pneumatic, hydraulic, water, electrical and fuel systems
- Guide elements such as guide strips, guide bushes, guide rails, rollers, bearings, sliding protection supports
- Clamping elements for quick-separating systems
- Flushing head seals
- Slide and roller bearings that do not run in an oil bath
- Shaft oil seals and sealing elements
- Friction and safety clutches, braking devices
- Carbon brushes, commutators / armatures
- Easy-release rings
- Control potentiometers and manual switching elements
- Securing elements such as plugs, anchors, screws and bolts
- Fuses and lamps
- Auxiliary and operating materials
- Bowden cables
- Discs
- Diaphragms
- Spark plugs, glow plugs
- Parts of the reversing starter such as the starting rope, starting pawl, starting roller and starting spring
- Sealing brushes, rubber seals, splash protection cloths
- Filters of all kinds
- Drive rollers, deflection rollers and bandages
- Cable anti-twist elements
- Running and drive wheels
- Water pumps
- Cut-material transport rollers
- Drilling, parting and cutting tools
- Energy storage

8. Exploded view and spare parts list**8.1 Holm**

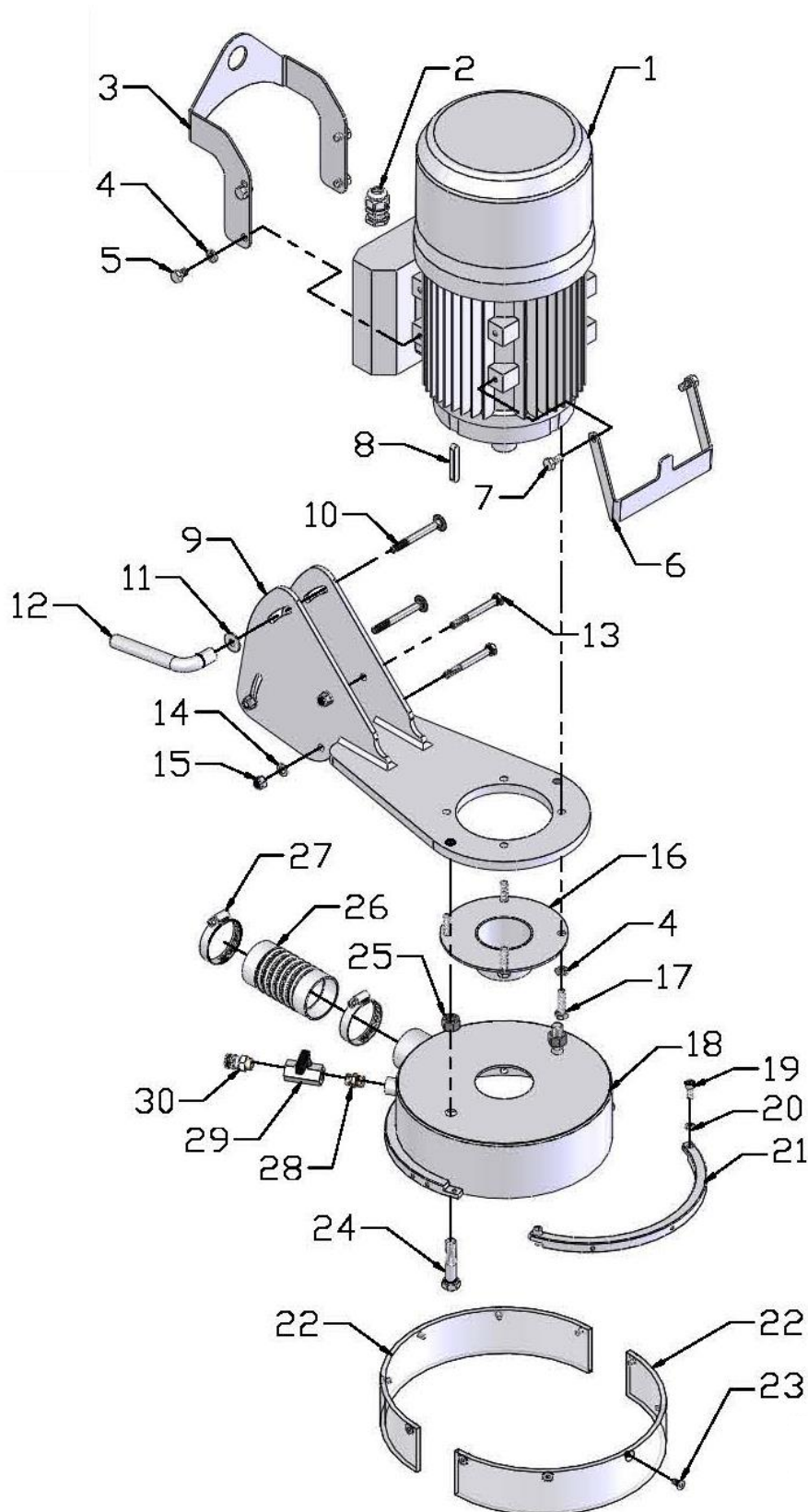
SM 250

Translation of the original operating instruction and spare parts list



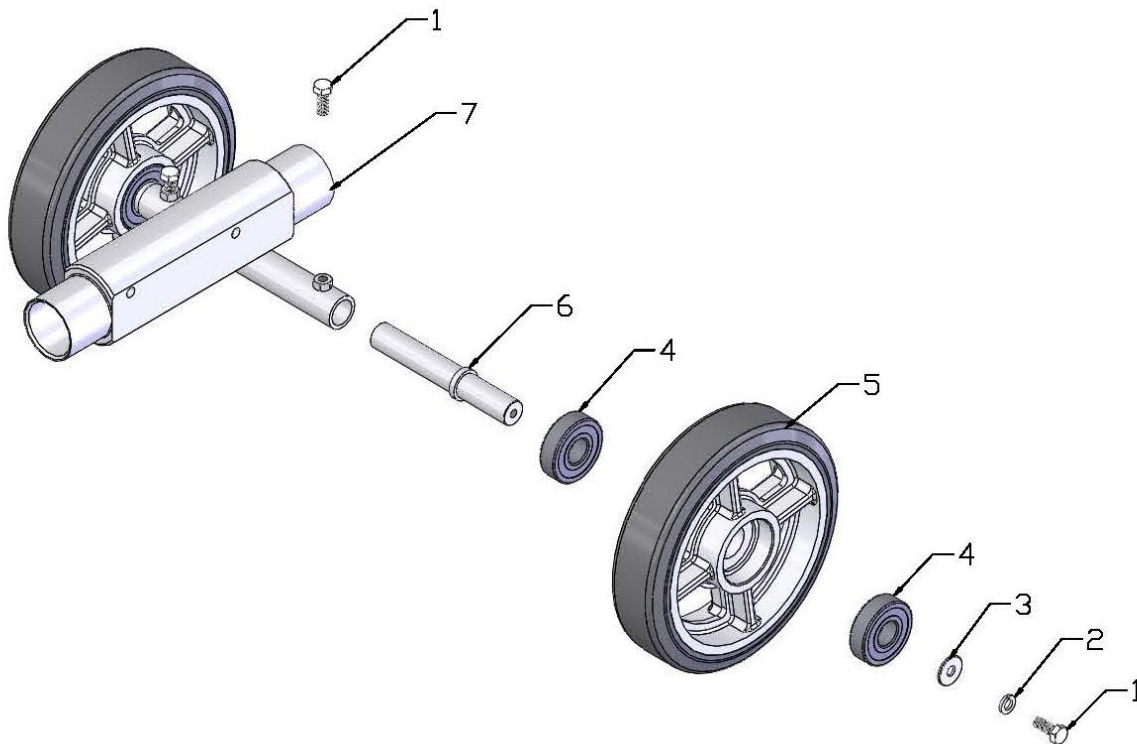
Pos.	Art.-Nr.	Menge Qty.	Norm	Info	Bezeichnung	Description	Désignation
1	0282 650 0163	1		50 X 50 X 5	Stopfen	Stopper	Bouchon
2	-	1			Oberholm	Head beam	Traverse supérieure
3	-	2			Handgriff	Handle grip	Poignée
4	-	4		PG	Kabelverschraubung	Cable connection	Branchement
5	-	1			Kabel	Cable	Câble
6	0288 900 1140	2	M8 X 75 ISO 4014		Schraube	Screw	Vis
7	-	1		14 X 3 X 50	Gummischlauch	Hose	Tuyau
8	0282 250 0661	2	A 8,4 ISO 7089		Scheibe	Washer	Rondelle
9	0267 113 0094	2	M8 DIN 1587		Hutmutter	Cover nut	Écrou coiffant
10	-	1			Spannhebel	Clamping lever	Levier de serrage
11	-	4	A 5 DIN 127		Federring	Spring washer	Rondelle ressort
12	-	1	M 5 X 12 ISO 4017		Schraube	Screw	Vis
13	-	1			Unterholm	Bottom beam	Traverse inférieure
14	-	1		10 mm	Spiralschlauch - Kabelschutz	Spiral coiled tube	Flexible en spirale - Protection câble
15	-	1	8 mm ISO 2936		Stiftschlüssel	Hexagon key wrench	Clé hexagonale
16	0284 250 9017	1			Schalter-/ Steckerkombination	Switch	Commutateur avec prise
17	0295 000 0170	2	A 5,3 DIN 125		Scheibe	Washer	Rondelle
18	0281 045 0203	2	M5 X 50 ISO 4762		Schraube	Screw	Vis

8.2 Motor plate



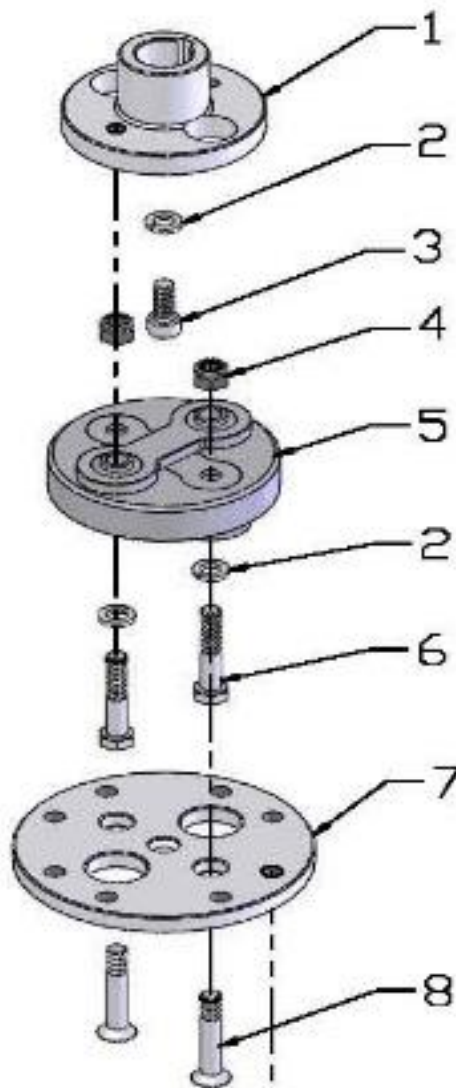
Pos.	Art.-Nr.	Menge Qty.	Norm	Info	Bezeichnung	Description	Désignation
1	-	1			Motor	Motor	Moteur
2	-	1			Kabelverschraubung	Cable connection	Branchement
3	-	1			Hebebügel mit Kranöse	Sling bar with lifting eye	Poignée avec anneau de levage
4	0282 150 0036	8	A 8,4 DIN 127		Federring	Spring washer	Rondelle-ressort
5	-	4	M8 x 12 ISO 4017		Schraube	Screw	Vis
6	-	1			Tragegriff	Handle	Poignée
7	0282 250 0006	2	M8 x 16 ISO 4017		Schraube	Screw	Vis
8	-	1	8 X 7 X 50 DIN 6885		Passfeder	Key	Clavette
9	-	1			Motorträger	Cutting head	Support du moteur
10	0295 140 0056	2	M8 x 75		Flachrundschrabe	Screw	Vis
11	0298 900 0008	2	A 8,4 ISO 7093		Scheibe	Washer	Rondelle
12	-	1			Klemmhebel	Clamp lever	Levier de serrage
13	0282 130 0534	2	M8 X 75 ISO 4017		Schraube	Screw	Vis
14	0282 250 0661	1	A 8,4 DIN 125		Scheibe	Washer	Rondelle
15	0282 065 0005	3	M8 ISO 7040		Sicherungsmutter	Nut	Écrou
16	-	1			Wellenschutz	Shaft protection	Protection de l'arbre
17	0295 000 0074	4	M8 X 30 ISO 4017		Schraube	Screw	Vis
18	0284 250 9020	1			Schutzringaufnahme hinten	Protecting ring holding fixture	Dispositif arrière de maintien de l'anneau de garde
19	0282 250 0065	2	M6X16 ISO 4762		Schraube	Screw	Vis
20	0295 000 0174	2	B 6 DIN 127		Federring	Spring washer	Rondelle-ressort
21	0284 250 9010	1			Schutzringaufnahme vorne	Protecting ring holding fixture	Dispositif avant de maintien de l'anneau de garde
22	0284 250 9001	2			Schutzring	Protective ring	Anneau de garde
23	-			(siehe Pos. 22)	Schutzring	Protective ring	Anneau de garde
24	0282 650 0158	2	M12 X 55 ISO 4014		Schraube	Screw	Vis
25	0295 000 0178	2	M12 ISO 4032		Mutter	Nut	Écrou
26	0284 250 9012	1		D 50 X 100	Absaugschlauch	Extraction hose	Tuyau d'aspiration
27	0284 250 9013	2		50 mm	Schlauchschelle	Hose clamp	Collier de serrage
28	0267 112 5723	1		G 1/4" A/A	Doppelnippel	Double nipple	Raccord double
29	0295 000 0326	1		R 1/4" I/I	Minikugelhahn	Mini ball valve	Robinet à rotule mini
30	0298 100 0130	1		G 1/4" A	Stecknippel	Plug nipple	Raccord

8.3 Undercarriage



Pos.	Art.-Nr.	Menge Qty.	Norm	Info	Bezeichnung	Description	Désignation
1	0282 150 0035	4	M8 X 20 ISO 4017		Schraube	Screw	Vis
2	0282 150 0036	2	A8 DIN 127		Federring	Spring washer	Rondelle-ressort
3	0298 900 0008	2	8,4 ISO 7093		Scheibe	Washer	Rondelle
4	0282 250 0096	4	6304 2RS DIN 625		Lager	Bearing	Roulement
5	-	2	d200 x 50		Rad	Wheel	Roue
6	-	2	20 x 140		Bundsteckachse	Shaft	Axe
7	-	1			Absaugstutzen mit Achsaufnahme	Exhaust nozzle with axle mounting	Buse d'échappement avec montage sur essieu

8.4 Grinding tool holder



Pos.	Art.-Nr.	Menge Qty.	Norm	Info	Bezeichnung	Description	Désignation
1	-	1			Motorflansch	Motor flange	Bride du moteur
2	0286 570 0043	3	A 10 DIN 7980		Federring	Spring washer	Rondelle-ressort
3	0295 000 0886	1	M10x25 ISO 6912		Schraube	Screw	Vis
4	0286 570 0052	2	M10 ISO 7014		Sicherungsmutter	Nut	Écrou
5	-	1			Gelenkscheibe	Flexible disc	Disque flexible
6	0284 650 0037	2	M10x55 ISO 4014		Schraube	Screw	Vis
7	-	1			Aufnahmeflansch	Reception flange	Bride support
8	0284 650 0091	2	M10x50 ISO10642		Senkkopfschraube	Screw	Vis

