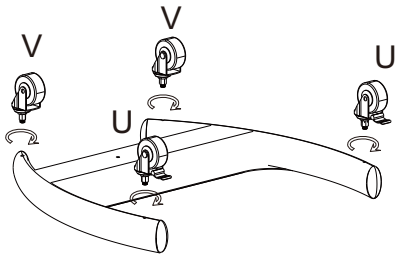
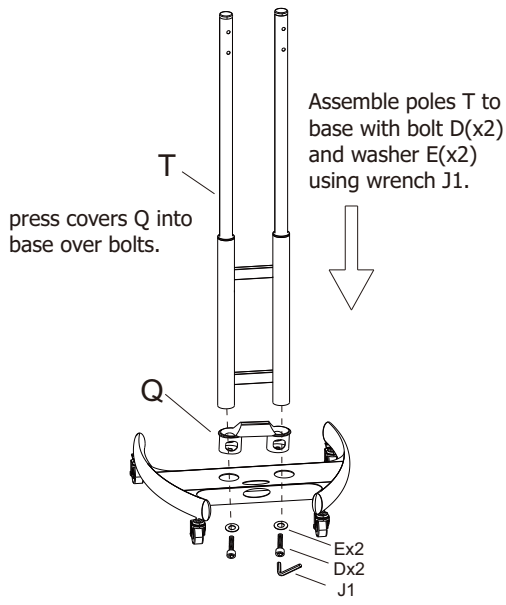


1.



Fasten casters U(x2) and V(x2) into base S.

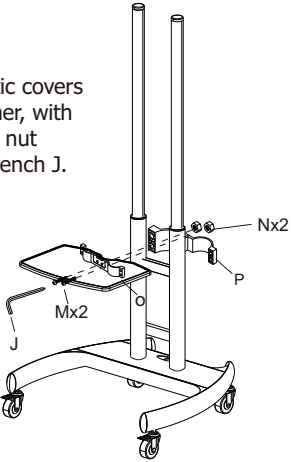
2.



press covers Q into base over bolts.

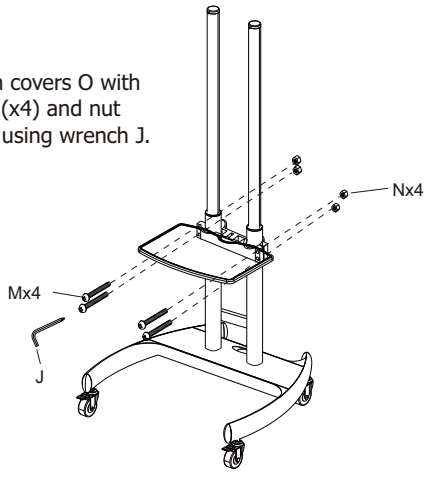
Assemble poles T to base with bolt D(x2) and washer E(x2) using wrench J1.

3.



Assemble plastic covers O and P together, with bolt M(x2) and nut N(x2) using wrench J.

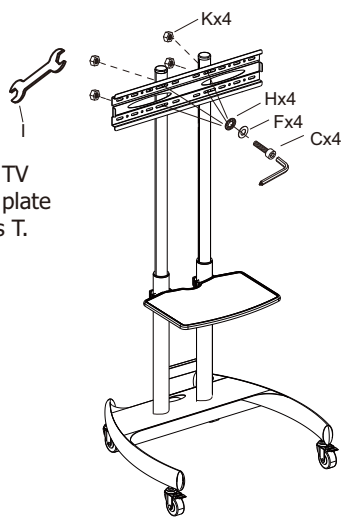
4.



Fasten covers O with bolt M(x4) and nut N(x4) using wrench J.

5.

Use bolt C(x4), washer F(x4) and rubber washer H(x4), nut K(x4) and tighten with wrenches J and I.

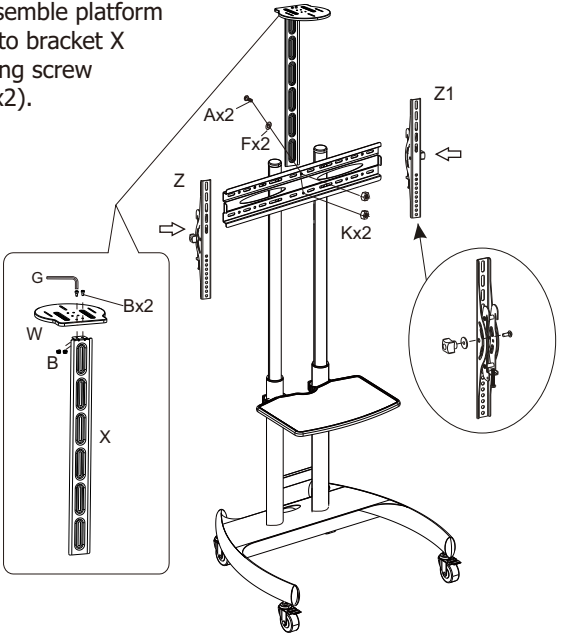


Assemble TV mounting plate Y on poles T.

6.

Assemble platform W to bracket X using screw B(x2).

Attach upper platform assembly to TV mounting plate with screws A(x4) and washer F(x2), nut K(x2) then tighten with wrenches I & J.



A		M8x14mm	2
B		M6x12mm	2
C		M8x60mm	4
D		M10x35mm	2
E		D10	2
F		D8	6
G		4mm + 6mm	1
H		D10 rubber	4
I		14mm-17mm	1
J		8mm	1
K		M8	6
M		M6x30mm	6
N		M6	6

O		1
P		1
Q		1
R		1
S		1
T		1
U		2
V		2
W		1
X		1
Y		1
Z		1
Z1		1