



Philips Consumer Lifestyle

Service Manual

PRODUCT INFORMATION

- This full-body tanning appliance is equipped with an electronic power supply. This means that when the appliance is connected to the mains, the tanning or relaxing functions are made visible by means of symbols on the display. The set time is also shown on the display. During the last minute of the set time, an acoustic signal sounds.
- The UV lamps only burn in combination with the IR (relax) lamps. When the UV lamps are on the IR lamps burn at reduced intensity.
- The IR lamps can also be used separately at full intensity for a relax session.
- This appliance is equipped with a sound module, offering a selection of four nature sounds. The user can also connect an external music appliance to play his/her own music, either via the loudspeakers or the earphones.
- This tanning appliance has also been fitted with a scent unit. The scent granules required for this unit can be ordered as service part (see parts list).

IMPORTANT

- Because of the brief high starting voltage, the appliance should be connected to a circuit protected with a 16A fuse.
- HPA lamps only go on at a restart if they have cooled down sufficiently.
- Never touch the HPA lamps with your fingers. If necessary, clean the lamps with a cloth moistened with some alcohol.
- When a new HPA lamp is installed, this lamp may have a different colour compared to the other lamp. This is normal and will disappear after a short period of use.
- After repair, the glass filters should be free from fingerprints. If necessary clean the filters with some alcohol.
- Never look directly into the light of an HPA lamp when it is on without protective goggles.
- Insufficient cooling – for instance when the vents are blocked or when the fan has broken down – will cause the thermal safety cut-out to switch the appliance off. Once the cause of overheating has been removed and the appliance has cooled down sufficiently, it will switch automatically on again.
- Let the appliance cool down for 15 minutes before folding it back into transport position and storing it.
- Only move the appliance when it is in transport position, i.e. when it is folded.
- If there are complaints about inadequate tanning, the output of the lamps can be measured with a UV-X 36 meter. For the minimum values, see table under 'Technical information'.

TECHNICAL INFORMATION

HP8560

- Input voltage : 230 V – 50 Hz.
- Input consumption : Approx. 2200 W
- Fuse : 16 A
- UVA source : 2 x Philips Cleo HPA SYNERGIE
- IR source : 2 x Philips type 15040R
- Starter : KAIDA KCCD-G400
- Timer : 45 min. (Digital)
- Radiation area : 190 x 70 cm
- Output (min) : 0.2 W/cm² at 65 cm. straight UVX-36 meter below the distance indicator
- Protecting goggles : 2 x HB072
- Safety : Class II Cenelec UV type 3
- Weight : Approx. 19 kg.

DISASSEMBLY & REPAIR INSTRUCTION

Always unplug the appliance before disassembly or repair!

1. Replacing lamps, fans and starters.

- Fold the appliance out into operating position.
 - Remove 12 screws on the bottom of the lamp housing.
 - Remove the upper part of the lamp housing (the fans, starters and internal wiring are now accessible)
 - Remove the screws of the mounting bridge.
 - Remove the reflector clamps.
 - Remove the reflector.
- You have to lift the mounting bridge to do so.

2. Replacing lock grips, soundboard, relay board and power SMPS (PCB)

- Remove the back of the timer housing.
- Now the lock grips, sound board, relay board and the power SMPS are accessible

3. Replacing timer front with speakers and display

- Remove the grip main assy and slide the lamp housing together with the slider off the column and place it on a table or bed with the front pointing downwards.
- Remove the back of the timer housing.
- Remove the sound board, the relay board and the power SMPS and undo the plug-in connections.
- Undo the 4 screws attaching the front to the black sleeve.
- Now the front can be removed.

4. Replacing seesaws (always replace both)

- Start disassembling the appliance as described under 3.
- Remove the back of the timer housing.
- Remove the 4 screws attaching the front to the black sleeve.
- Remove the black sleeve.
- Remove 2 shafts.
- Remove the spring. Be careful, for the spring is tensioned.
- Remove the seesaws.

5. Stand

- The column of the stand has been mounted by means of a hydraulic press and cannot be removed without causing serious damage.
- As a result, the hinge housing cannot be disassembled either.
- The legs have been mounted on the paw by means of a hydraulic press and cannot be removed without causing serious damage.

To replace the hinge housing assy:

- Undo the screws of the main grip.
- Take the main grip off stand.
- Remove the black plastic tube from the column.
- Slide the lamp housing together with the slider off the column.

To replace the paw and the paw cap (L&R) and the wheels:

- Undo the screw on the inside of the paw.
- Unsnap the paw caps.
- The wheels are now accessible.
- Undo 4 screws in the point of rotation of the paw to detach the paw.

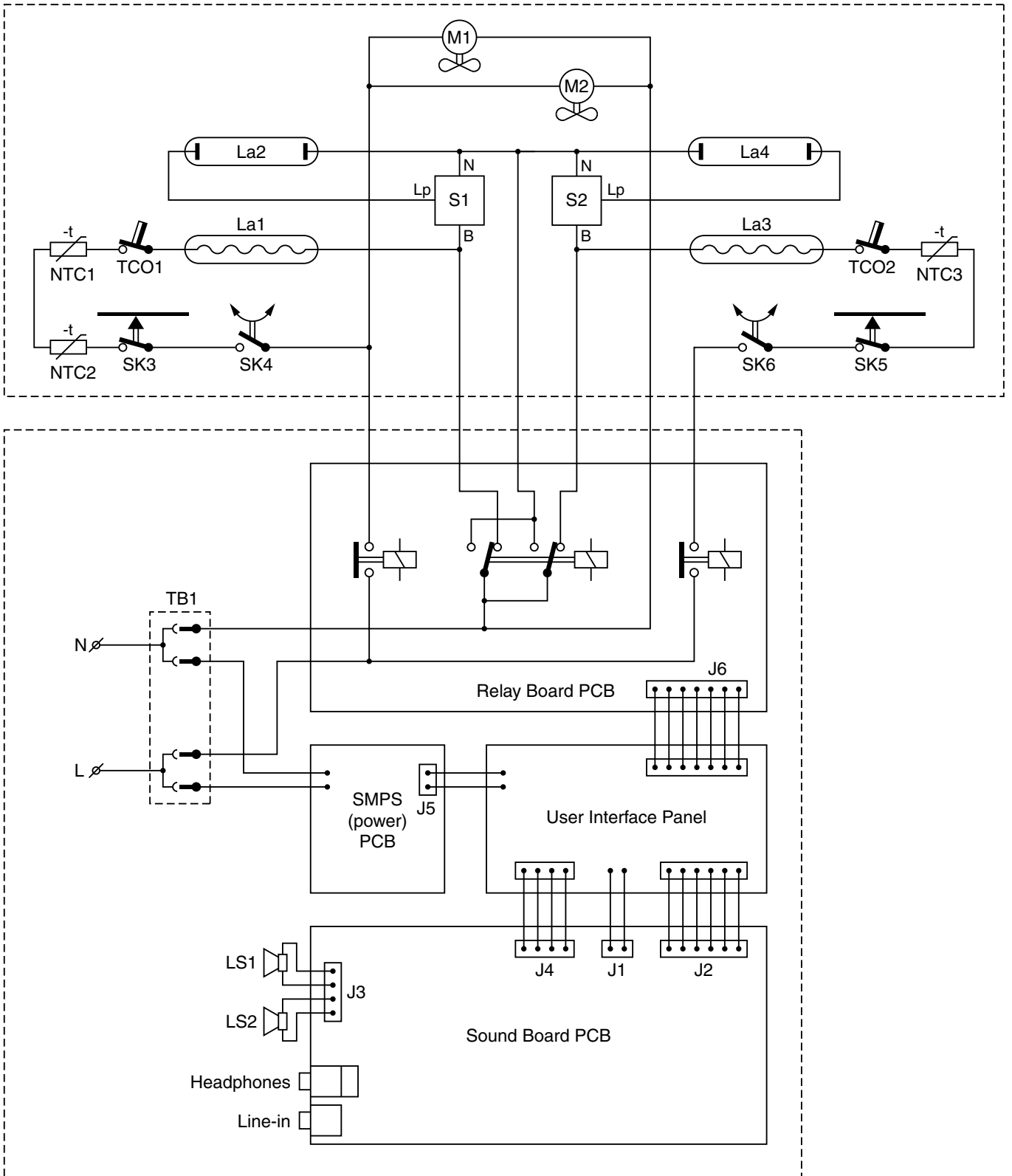
To replace the sliding plug leg:

- To replace the sliding plug of the leg, the existing sliding plug has to be smashed with the pointed end of a hammer; otherwise it can't be removed without damaging the leg. A new sliding plug can simply be snapped onto the leg.

6. Resetting the timer and hour counter

- When the timer has detected a "temporary" fault, it shows an error code on the display.
- After unplugging the main cord for 30 seconds the timer will reset automatically.
- If the error code does not disappear, there is probably a defect in the relay board or the checking device in the software.
- Reset the hour counter (e.g. after replacing the UV lamps).

0	1	2	3	4	5	6	7
1	Resetting the hour counter	00	Start Stop Press	+ 2x	⊞ + 1x	+ 1x	000

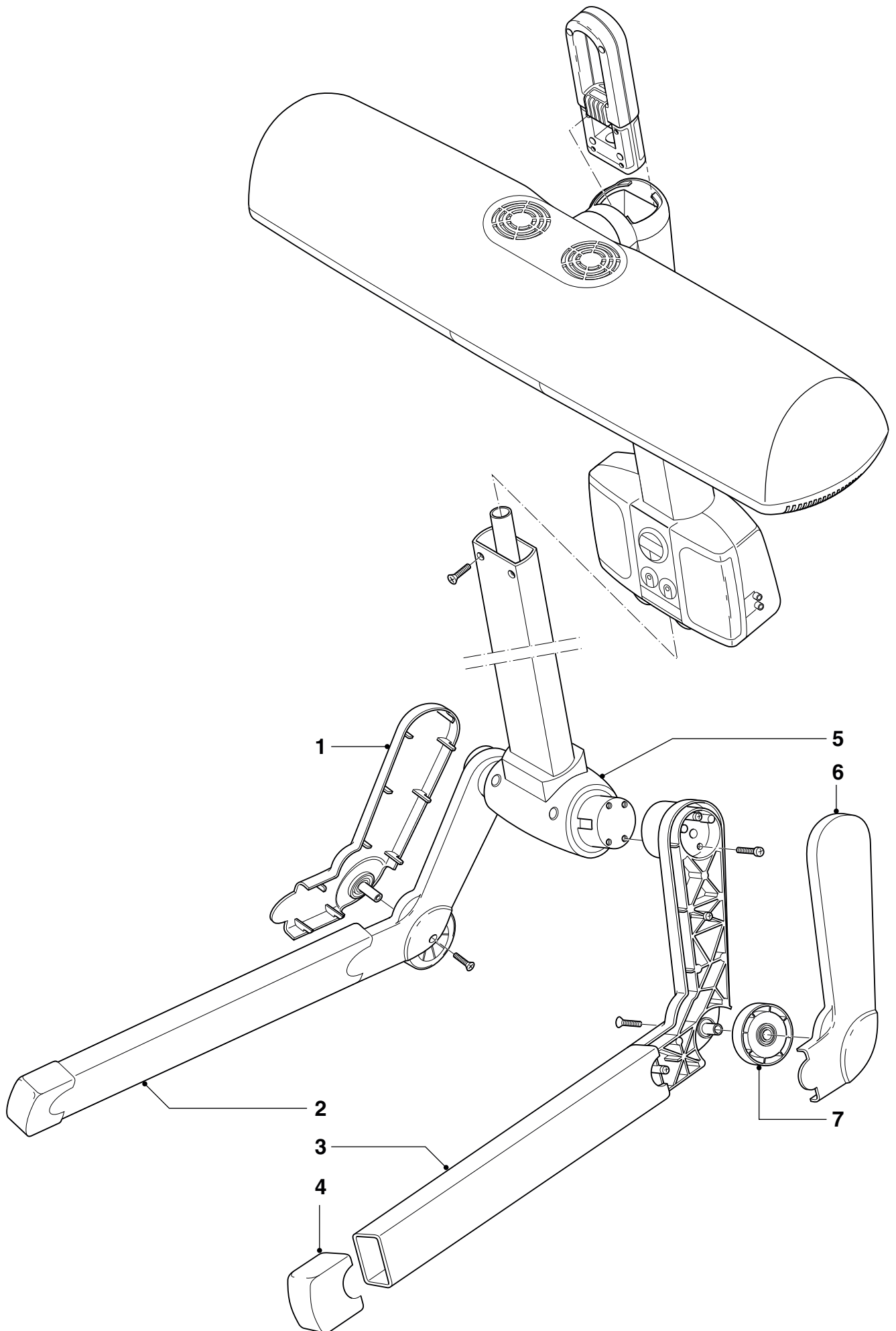


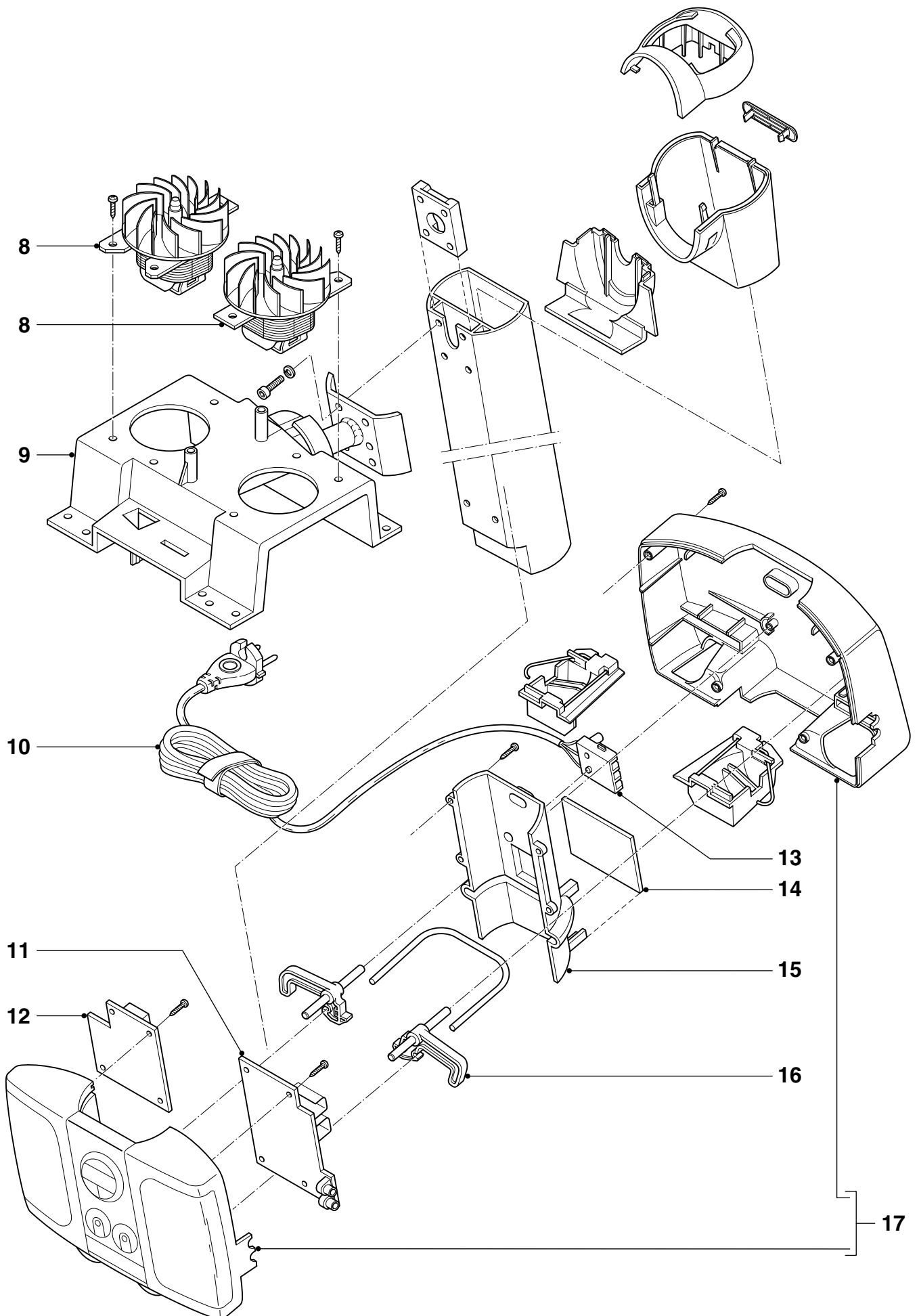
PARTS LIST

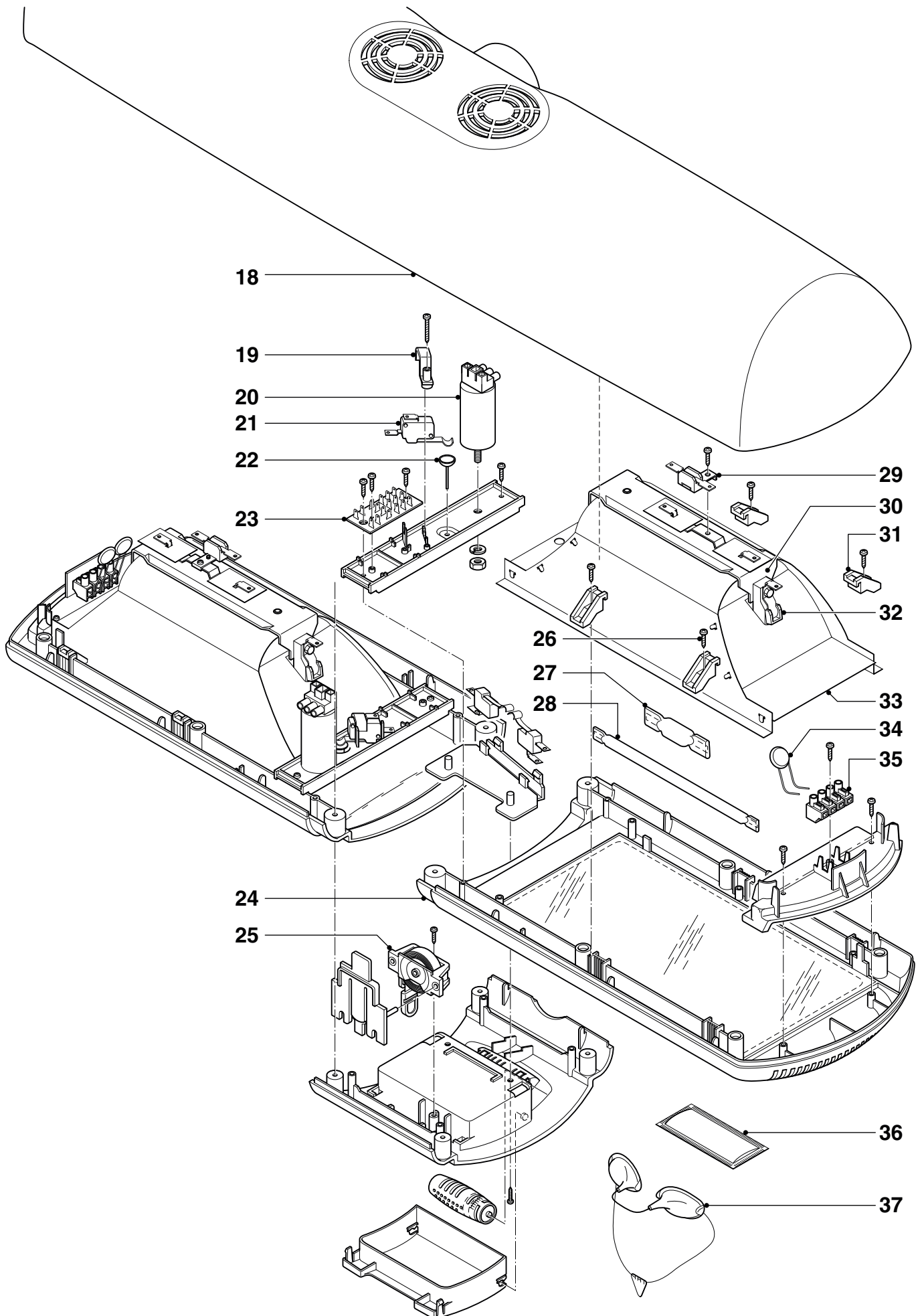
HP8560

Item	Service code	Description
1	4222 062 95940	Paw cap R
2	4222 062 95950	Leg assy R
3	4222 062 95960	Leg assy L
4	4222 062 95970	Leg sliding plug (set)
5	4222 062 97181	Hinge assy
6	4222 062 95990	Paw cap L
7	4222 062 96000	Wheel
8	4222 062 96010	Fan assy
9	4222 062 96410	Slider assy
10	4222 062 96030	Main flex EU
	4222 062 96040	Main flex UK
	4222 062 96050	Main flex CH
11	4222 062 96870	Sound Board PCB
12	4222 062 96880	Relay Board PCB
13	4822 265 30284	Connecting block 3S
14	4222 062 96910	SMPS (power) PCB
15	4222 062 96390	Sleeve
16	4222 062 96190	Sea saw (set)
17	4222 062 97161	Timer sound panel HP8560
18	4222 062 97141	Lamp housing US

Item	Service code	Description
19	4822 404 40639	Switch bracket
20	4822 214 12272	Starter HPA
21	4822 271 30619	Micro switch
22	4822 410 40417	Switch pin
23	4222 062 96230	17 tabs PCB
24	4222 062 97151	Lamp housing LS
25	4222 062 95020	Distance indicator
26	4222 062 96280	Screw (set 3.5 x 20 and 3.5 x 12)
27	4222 062 96290	Lamp HPA
28	4222 062 96300	Lamp IR
29	4222 062 95920	Thermal cut off 90 °C
30	4222 062 96310	Lamp holder assy IR
31	4222 062 95250	Reflector clamp
32	4822 325 20102	Lamp holder HPA
33	4222 062 96320	Reflector assy
34	4222 062 94580	NTC resistor 22 W
35	4222 062 94570	NTC connector
36	4222 062 96330	Scent refill packages HB080
	4222 062 96481	Scent refill packages "Only for EE"
37	4822 690 80147	Protecting Goggles HB072







WIRING DIAGRAM

HP8560

