

SIZE SPECS.

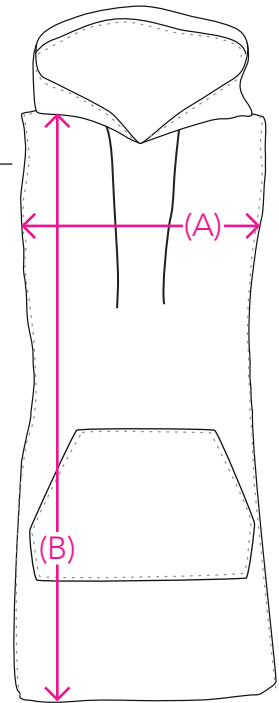
WOMEN

HOW TO MEASURE

HOODED DRESS:

Width: measure from the left to the right under the arms (A)

Length: measure from the highest shoulder point to the bottom of the hooded dress (B)



SIZE	S	M	L	XL	XXL
LENGTH (A)	45.5	48	50.5	53	-
LENGTH (B)	85	87	89	91	-