

EICHHOLTZ



*THE ART
OF COLOR*





THE ART OF COLOR

Color defines the atmosphere of a home. It shapes space, influences emotion, and brings balance to everyday living. More than a design choice, color is a personal expression. One that adds depth, warmth, and harmony to our surroundings. In this magazine, we celebrate the power of color through new collections, inspired collaborations, and craftsmanship from around the world. Each piece is designed to inspire, inviting you to set the tone for spaces that feel both timeless and alive.

A NOTE FROM THE EDITOR

Interior design is deeply connected to color, a powerful tool that shapes both space and emotion. Color influences how we perceive a home, enhances light and architecture, and creates flow, while also affecting how we feel—uplifting moods, reducing stress, and bringing balance and harmony to everyday life.





TABLE LAMP DIONNE N° 120502

p.12

MEET COREY DAMEN JENKINS

The visionary designer behind bold, modern maximalist interiors. In the following pages, explore his exclusive Eichholtz collection through striking imagery and curated designs.



SCULPTING WITH COLOR

Creative Director Florian Roozen presents an exclusive, limited-edition glass collection. Discover sculptural objects where color, light, and form come together.

p. 84



RUGS BY KAMYAR MOGHADAM

Raised among craftsmanship, he brings a daring, modern vision to rug-making. The Eichholtz collection combines texture, pattern, and color to create expressive, contemporary pieces.

p. 44



GLAMILISTIC ELEGANCE

Vanessa Deleon, a New York-based designer, is known for her Glamilistic style. She has a long-standing partnership with Eichholtz, incorporating pieces into her projects.



p. 54



p. 94

COLOR AS EMOTION

Jean Porsche, an architect and interior designer, shapes spaces with light, proportion, and narrative. He adds sophistication and personality using color and signature Eichholtz designs.







CHANDÈLIER ERIKA L. N° 120411 // SOFA LOUISE N° 118682 // TABLE LAMP DIONNE N° 118682 // SIDE TABLE DRAYTON N° 118318 // CHAIR XAVIER N° 120582 // RUG MARLTON N° 120766



COURTIER

Bowl | N° 120650

LAREDO

Side Table | N° 119797

COLOR CHARISMA



In this new collection, we celebrate the power of color with bold combinations, rich pigments, and unexpected contrasts. Each piece is thoughtfully crafted to elevate any space, from subtle accents to big statements. Let color take the lead.

01 **CASSARA**
Mirror | N° 119702

02 **HELMSLEY**
Bench | N° 120631

03 **ZANDRIA**
Rug | N° 119243

04 **BONNY**
Table Lamp | N° 121081

05 **LOXLEY**
Vase | N° 119966

06 **NIVO**
Picture Frame | N° 119983

07 **CAMARI**
Cushion | N° 120811

08 **HOMMAGE**
Print by Yves Klein | N° 121105

09 **TULIPA**
Vase | N° 120341

10 **MARBELLA**
Sofa | N° 120079



“Eichholtz is the perfect partner to break the mold, go bold, and finally create something unexpected for the marketplace”

COREY DAMEN JENKINS





@COREYDAMENJENKINS

JEWELS FOR THE MODERN INTERIOR

For more than 30 years, Eichholtz has shaped the world of luxury interiors with its refined craftsmanship and architectural elegance. Now, the brand enters an exciting new chapter with its first-ever designer collaboration—partnering with Corey Damen Jenkins, one of today’s most influential and admired interior designers.

I have been a longtime fan of Eichholtz. Our firm is known for producing modern, maximalist interiors that embrace exuberant color, textures, and patterns. So, we have always considered Eichholtz a premier partner and source for furnishing our clients' homes. We use Eichholtz's products in multi-hyphenate ways—from decorative lighting and sculptural furniture to layering bold artwork and accessories in our clients' spaces.

While my team and I were conducting our annual buying trip at the Eichholtz showroom in High Point, we were invited to enjoy some hors d'oeuvres and drinks with the Eichholtz marketing team. During the conversation, I showed the team some sneak peeks of my forthcoming coffee table book, “Design Reimagined.” I solicited their opinion on some front-cover options our publishers were considering. The marketing team noticed that many of the interiors in the new monograph featured Eichholtz products—specifically light fixtures—and the conversation evolved into what a licensed collection with our brand and Eichholtz would look like. I expressed an interest in being considered for the partnership. Eventually, I shared several dozen lead/ink sketches of decorative lighting concepts I had designed and stored in my “creative vault” over the years. Edwin van der Gun saw some fixtures that he felt spoke to Eichholtz’s overall vernacular. After a series of creative pitch meetings, our brands decided to join forces and “get married”—and here we are!

I’ve been producing licensed product collections for over 10 years, and I’ve learned that licensors must partner only with brands that truly “get them”. There needs to be clear synergy—both creatively and worldview-wise—for any licensed collection to succeed. As an existing Eichholtz customer, I can vouch for their craftsmanship and quality. It’s so much easier to design a collaboration for a brand when you already believe in its value and can endorse it without reservation.

I have always believed that decorative lighting is truly the “jewelry” of any room, and lately, there has been a creative stagnation in this product category. Homeowners and interior designers are yearning for something fresh, different, and off the beaten path. So, I really wanted to shake things up with my lighting collection, and Eichholtz is the perfect partner to break the mold, go bold, and create something unexpected for the marketplace.

The best word to sum up my vision for this collection is renaissance. It is a revival of historic concepts and aesthetics that have long been dormant and forgotten, reimagined for the 21st Century through a fresh, modern lens. It was important to me that our Eichholtz collection had a diverse, international vibe that would resonate with people around the world. So, I drew inspiration from a wide range of sources. For example, motifs associated with ancient civilizations such as the Egyptians, Greeks, and Romans. I also incorporated references to organic elements—things like florals, seashells, alabaster, water, and feathers. There are subtle nods to celestial objects beyond Earth. I also wove 1920s Art Deco, Neoclassical, and Viennese Secessionist Period influences into some of the pieces. So, there’s something for everyone!

It’s honestly impossible for me to choose a favorite piece in this collection. Each series is unique and makes a powerful solo visual statement. Collectively, they present a cohesive family of designs. It’s like picking your favorite child—I can’t do it! My advice for styling this collection is to be bold and not be afraid to mix the elements!

corey
damen
jenkins

MODERN CLASSICISM

COREY DAMEN JENKINS DRAWS INSPIRATION
FROM ANCIENT EGYPTIAN SYMBOLISM AND
EARLY NEOCLASSICAL DESIGN WHILE MAINTAINING
A DISTINCTLY MODERN PRESENCE.













MINERVA N° 120300



PERSEPHONE N° 120299



ALESA N° 120296



MELBOURNE N° 120288



ESTELA N° 120293



ISABELLE N° 120282



ANDROMEDA N° 120291



ERIKA N° 120309







TEALIGHT HOLDER LEONIDAS N° 119710 // CHANDELIER PERSEPHONE N° 120299 // FLOOR LAMP IZZY N° 120280 // BOWL COURTIER N° 120650



CHANDLER VICTORY N° 120285

GLAMOUR REIMAGINED

Strongly influenced by Art Deco, Corey Damen Jenkins celebrates the geometry and grandeur that defined the design revolution of the 1920s and '30s. With shapes that echo the architectural forms of the Chrysler and Empire State Buildings, this interplay of tone and texture reflects Deco's fascination with contrast.



WALL LAMP VICTORY N° 120287



THE DIALOGUE BETWEEN LIGHT AND SPACE

The collection continues with the elegance of modern sculptural lighting. Shapes evoke mid-century modern design while retaining a timelessness. Corey's designs blend light and architecture, with an aesthetic suited to both contemporary and classic interiors.

LANTERN OLYMPIA L. N° 190290 // BOX CAVENDISH S. N° 111960 // BOX CAVENDISH L. N° 115961



A close-up photograph of a plush sofa with a dense floral pattern in shades of green, blue, and beige. The word "INSPIRED" is written in a large, white, serif font across the middle of the image. The background shows a light-colored floor and a white baseboard.

INSPIRED

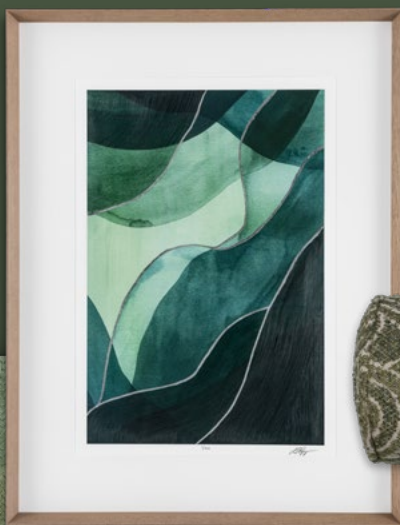
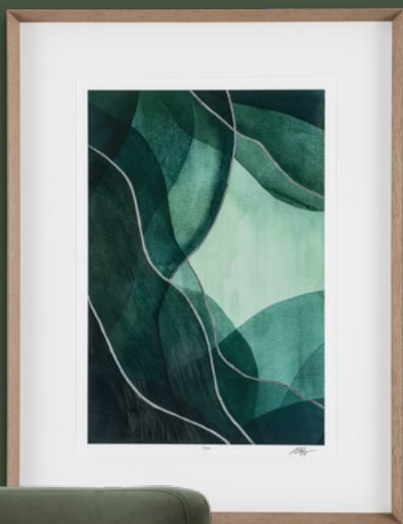


BYNATURE



A SANCTUARY OF GREEN

Our green-toned interiors reconnect modern living with the purity of nature. Verdant shades create a tranquil backdrop, while natural stone, textured fabrics, and botanical silhouettes provide a rich sensory experience. Each piece is thoughtfully selected to enhance comfort and quiet luxury. The atmosphere is fresh yet grounded—a refined interpretation of natural living.



01 **TIDE SOURCE**
Prints by Grace Popp | N° 121101

02 **AMARANTE**
Cushion | N° 120813

03 **KENTIA**
Artificial Plant | N° 118904

04 **MARBELLA**
Swivel Chair | N° 120080

05 **BONNY**
Table Lamp | N° 121080

06 **CHAVELLE**
Dining Chair | N° 120869





COCOONED IN WARMTH

THERE IS SOMETHING INCREDIBLY TIMELESS ABOUT
EARTH TONES—THESE CALMING HUES CREATE A LAID-
BACK, COMFORTING FEEL. THEIR MUTED APPEARANCE
HAS A COCOONING EFFECT ON ANY SPACE.



STOOL BLACKWELL N° 120097 // OUTDOOR BOWL OCEANA N° 119579 // FLOOR LAMP RIALTA N° 119579 // CHANDELIER ESTELA N° 120293 // CUSHION CAMARI L N° 120814 // CUSHION AMARANTE N° 120816 // BOWL COURTIER N° 120650



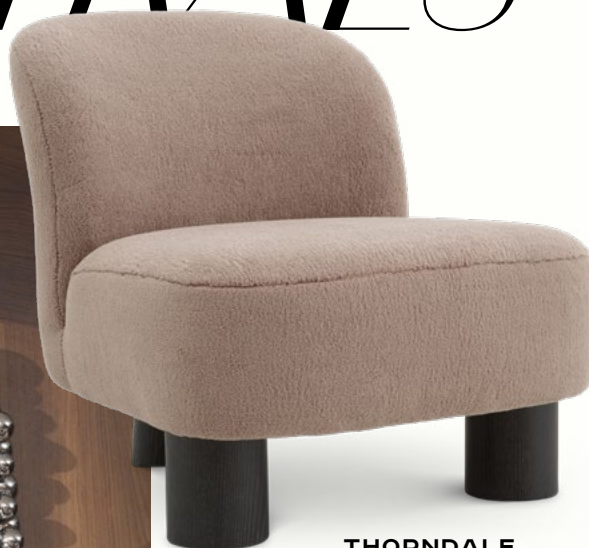
EARTHY ELEGANCE

In this setting, brown isn't just a color, it's a feeling. A sense of calm, depth, and understated luxury flows through every detail. The harmonious blend of chocolate, walnut, and caramel tones evokes a natural warmth that instantly slows the pace of daily life. Textures such as leather and wood add depth and contrast, creating an environment that feels grounded yet undeniably sophisticated.

CONTEMPORARY NEUTRALS



WALL OBJECT SILVERSHORE N° 120161



THORNDALE
Chair | N° 119822

OTHELLO
Mirror | N° 119841



LEONIDAS
Tealight holder | N° 119710



ASHBURY
Coffee Table | N° 120056



BLACKWELL
Stool | N° 120097



BOX MARWOOD S N° 119963 // BOX MARWOOD L N° 119964





SOFTEN THE LOOK

OUR LATEST COLLECTION FEATURES PIECES THAT CAN BE COMBINED TO CREATE A CLASSIC-MEETS-ECLECTIC AESTHETIC. COLORS LIKE TEAL AND PALE GREEN PROVIDE A SOFT, REFRESHING BACKDROP FOR MODERN FURNISHINGS, DRAMATIC HUES, AND LUSH TEXTILES.









THE PERFECT BALANCE

Seating options in neutral tones, like the elegant Lauriston chair with its sleek wood and the Bellavoir sofa in camari cream, calm and balance a colorful, vibrant room by giving the eye a neutral place to rest. This allows prints and bold colors to feel more intentional and cohesive.





PATTERN PLAY



01



02



03



04



05



06



07

Patterns bring depth, character, and a sense of curated luxury into any interior. At Eichholtz, each pattern is thoughtfully composed to create harmony and visual intrigue. From refined geometrics to rich textures, the right pattern elevates a space, adding layers of sophistication and timeless appeal.



08

01 **GAULTIER**
Table Lamp | N° 120143

02 **BARLETTA**
Wine Cooler | N° 119096

03 **CORDOBA**
Stool | N° 120576

04 **ALDEN**
Chair | N° 120319

05 **CHRISWICK**
Picture Frame | N° 120109

06 **BELVOIR**
Table Lamp | N° 120456

07 **CAVENDISH**
Box | N° 119961 | N° 119960

08 **CORDERA**
Sofa | N° 120065



 @MAISONMOGHADAM

RUGS BY KAMYAR MOGHADAM

In 1962, my father was invited by Princess Grace to bring his carpet expertise to Monaco, so I was raised in a world where craftsmanship and beauty were part of everyday life. Over time, I developed my own way of working—a little daring, a little rebellious.

HOW DID THE COLLABORATION WITH EICHHOLTZ COME ABOUT?

I met Edwin at Maison & Objet. It was apparent we shared the same instinct for how a space should feel. Rugs are what I know best. When I looked at the Eichholtz world, I saw a space where my insight could bring something new: a fresh interpretation of what a rug can do in a contemporary interior.

WHY DID THIS COLLABORATION APPEAL TO YOU?

Eichholtz has a very distinctive aesthetic, refined, modern, elegant, often anchored in neutrals. I immediately saw an opportunity to bring something they hadn't explored yet: a broader vocabulary of what a rug can be. I didn't want to move away from their identity, but to expand it.



WHAT IS YOUR VISION BEHIND THIS RUG COLLECTION?

A series of pieces that each speak a different language, from modern deconstruction to retro motifs reimagined, all showcasing the full spectrum of craftsmanship. One piece is a modern composition with a deconstructed panel layout. Another features thousands of hand-cut scales, creating subtle color shifts and rich texture. We also designed a retro, almost pixelated rug made from tiny wool loops, alongside a geometric pattern that's deliberately half-erased for a rebellious edge. Finally, a botanical rug inspired by nature uses a hand-trimmed pile to give the leaves real depth and dimension.

WHAT INSPIRED YOU?

Taking something timeless and giving it a fresher, more unexpected edge. Interiors should feel authentic, not staged or timid. With the right mix of textures and techniques, you can take a quiet motif and turn it into something much more expressive. That tension between the traditional and the contemporary is where I feel most at home creatively.

WHAT IS YOUR FAVORITE ITEM WITHIN THE COLLECTION?

I'm particularly drawn to the ivory piece with the thousands of subtle hand-cut shapes. It's very subtle, almost tone-on-tone, but the slight shifts in height and the way the darker base peeks through give the rug a really refined depth. It looks minimal from afar, but up close it has a richness and precision that I love.



HOW DO YOU USE COLOR IN YOUR WORK?

Color is emotion—it's vibration, personality, energy. People often fear color, and I've spent my career showing them they don't have to. A space becomes far more interesting when you allow color to express your identity and your courage. Bold doesn't need to mean loud; it can be subtle, layered, unexpected.

DO YOU HAVE A STYLING TIP FOR THIS RUG COLLECTION?

Mix worlds. Pair a geometric rug with a curved sofa, a fluid shape to bring softness against something architectural. When you combine unexpected elements, you create emotion—that's the essence of good design. Most importantly: don't decorate to please others. Choose pieces that reflect who you are.





GROUND *ED* *IN* *TEXTURE*



Carpets are the quiet architects of an interior. They anchor furniture, shape atmosphere, and give a space its rhythm and identity. More than decorative elements, they form the foundation of a room, adding texture, depth, and emotion. This collection celebrates craftsmanship through handcrafted techniques, layered surfaces, and designs that balance tradition with a contemporary edge. Each carpet has its own character, inviting interiors to feel personal, expressive, and lived-in rather than styled.

O1 LANGDON
200 x 300 cm | N° 120761
300 x 400 cm | N° 120762

O2 MARLTON
200 x 300 cm | N° 120765
300 x 400 cm | N° 120766

O3 BLAKEMORE
200 x 300 cm | N° 120767
300 x 400 cm | N° 120768

O4 FEATHERSTONE
200 x 300 cm | N° 120769
300 x 400 cm | N° 120770

O5 MAYFIELD
200 x 300 cm | N° 120763
300 x 400 cm | N° 120764



COFFEE TABLE / ARDHAM N° 120359 // MODULAR SOFA CRESSON MIDDLE N° 120066 • INNER CORNER N° 120067 • OUTER CORNER N° 120068 // CABINET BOGOTA N° 120888 // HURRICANE WESTGROVE N° 119950



ELEGANT BY DESIGN

Inspired by our Dimitrios series, our new Bogota series features a cabinet and a dresser available in two different finishes. The whole series is crafted from sleek veneer with ribbed panels that add a touch of Mid-Century Modern chic to your living space. The vintage-inspired design pairs beautifully with the shapely design of our modular Cresson Sofa.

ELVINGTON
Mirror | N° 120444 | N° 120445



CAMARI
Cushion | N° 120811



CAMARI
Cushion | N° 120808



MARSTON
Cushion | N° 120818



LANGLEY
Object | N° 120102



LOXLEY
Bowl | N° 119967



DECORATIVE TOUCHES

GRANTHAM
Outdoor Planter | N° 120379



GEORGIAN
Hurricane | N° 119996 | N° 119997



WESTGROVE
Hurricane | N° 119950 | N° 119949





PERSONALIZING YOUR SPACE

Decorative pieces, from sculptural objects to tactile accents, add depth, balance, and personality. Their materials, textures, and silhouettes add depth, elevating an interior from simply furnished to luxuriously personalized. With the right pieces, every room comes alive with a distinct sense of character and style.



Trolley Mayfair N° 120535 // Table Lamp Callao N° 118269 // Tray Salvi Round N° 118238





@VDA_DESIGNS

MEET VANESSA DELEON

I'm Vanessa Deleon, a New York-based interior designer inspired by my Cuban roots and known for my Art Deco-driven aesthetic. I started in my family's furniture business before branching out on my own to create Vanessa Deleon Associates while studying at Berkeley College, Fashion Institute of Technology, and then later on at The Feng Shui Institute of America.

My national debut came on HGTV's Design Star, where I gained recognition for my own unique style, which I coined as "Glamilistic," a blend of glamour and minimalism that creates spaces that feel luxurious, refined, and effortlessly streamlined. Since then, I've appeared on shows like Food Network's Restaurant Impossible, George to the Rescue, NBC's Open House, HGTV, DIY Network, and NBC's American Dream Builders. My work has been recognized by industry leaders and featured in publications including Interior Design, Aspire, Latina, and New York Spaces, as well as in several design books. No matter the project, I bring the same drive, dedication, and determination that have defined my career from the start.

I've known Eichholtz for a very long time, since before the brand even came to the U.S. I first discovered them while designing a home in Amsterdam for DJ Laidback Luke. A friend in the industry told me I had to see this incredible showroom, and the moment I walked in, I fell in love. The vibe, the music, the atmosphere—everything spoke to me. Years later, at The High Point Furniture Market, I wandered into a showroom and instantly felt that same energy. The music, the mood. It all came rushing back. I started scrolling through my photos to pull up the ones from Amsterdam, and realized the showroom was Eichholtz. I signed up for a trade account on the spot and have been using their pieces ever since.

We now actively source from Eichholtz as one of our top vendors. We use their pieces in every way possible, in bedrooms, living rooms, dining rooms, and even lighting and accessories. At this point, almost every project we design includes Eichholtz in some form.

I'm incredibly grateful and excited to share this upcoming furniture collection with Eichholtz, launching at High Point Market in October of 2026. It marries the timeless elegance of Eichholtz with my signature Glamilistic style, blending glamour and streamlined minimalism into one cohesive story. Collaborating with the creative team to bring these pieces to life has been such a joy. We can't wait to reveal more as we get closer to the launch.



“We now actively source from Eichholtz as one of our top vendors. We use their pieces in every way possible”

VANESSA DELEON





MODERN GRANDEUR

Here, we blend marigold colored with contemporary sculptural décor, such as our Chambertin coffee table. The vintage brass base is expertly handmade and sculpted to last a lifetime. The Rucello dresser and matching dining table are crafted from light walnut veneer with an elegant circular inlay pattern that adds texture to the space. Interesting accessories unify everything, adding vibrant color and a touch of modern glamour.

RUCELLO

Dining Table | N° 119845

RUCELLO

Dresser | N° 119825











SHAPE THE LOOK OF YOUR SPACE

Add layers of interest with accessories to bring effortless elegance to any space.

From sophisticated objects like our Hawtrone Box in monochrome with its elegant glossy finish, to soft textiles and refined accents, each item is chosen for its unique design. We also have our Jarrow table lamp, handmade in Portugal, which seamlessly lends an earthy, artisanal aesthetic and a sense of luxury. Designed to complement, not compete, our accessories add depth, warmth, and signature sophistication to every interior.

JARROW

Table Lamp | N° 121078



DINING TABLE BODEGA ROUND N° 119360

LET BRASS STEAL THE SPOTLIGHT



TRAY ELVINGTON N° 120654 // VASE OPULENT N° 120652

04

05

06

07

01 **RONIN** Mirror | N° 120024 - 02 **FITZROY** Pendant | N° 119909 - 03 **NAPOLI** Wine Cooler | N° 119912 - 04 **MERONA** Bowl | N° 119071
05 **CORWYN** Candle Holders | N° 120113 - 06 **ASHCOMB** Bowl | N° 119911 - 07 **CORWYN** Bookend | N° 120114

**ARTFUL BRASS FOR
DECORATIVE OPULENCE**

Part of our exclusive Corwyn series, this exquisite wine cooler on stand features a hand-cast rope pattern with a gold-tone, antique-brass finish. Its granite base adds natural beauty and enduring durability to a piece that will last for many decades.







CASSARA
Mirror | N° 119699

ELVASTON
Object | N° 120108

RUCELLO
Dresser | N° 119825

**MONOCHROME DESIGN SETS
THE TONE FOR CALM ELEGANCE**

Bold black tones paired with crisp whites create a monochrome aesthetic that is timeless, elegant, and serene, effortlessly highlighting textures and architectural details.





1



2

MODERN MONOCHROME



3

01 **DUBOIS**

Dining Chair | N° 119714

02 **YARDHAM**

Coffee Table | N° 120359

03 **FOXDALE**

Vase | N° 119948 | N° 119947

04 **BROMLEY**

Dining Chair | N° 120169

05 **HAWTRONE**

Box | N° 119959

06 **LAURISTON**

Chair | N° 120084

07 **CLAYBOURNE**

Stool | N° 119691

5



4



6



7



THE TIMELESS LUXURY OF BEIGE AND NEUTRALS

Beige and neutral interiors look even more luxurious when they're layered with depth, texture, and thoughtful contrast. Rich materials, such as the natural marble of our Bodega rectangular dining table (on the right page), provide a sculptural presence. At the same time, the antique glass on our Nottingham nightstand above adds texture to the natural shades. Soft lighting enhances the warmth of this elegant color scheme even further.

RIALTA

Table Lamp | N° 119974

NOTTINGHAM

Nightstand | N° 120249







PENDANT CORTÈSE N° 118702 // CHAIR RUBINA N° 116686 // SIDE TABLE GRANITO N° 119874 // CABINET SPLENDORA N° 119043

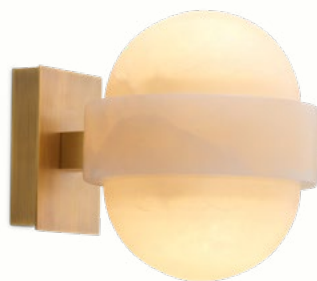


*RUSTIC BRASS,
SOFT LIGHT*

1



2



3



6



TABLE LAMP RIALTA N° 119974



4

01 **SOLARA**
Pendant | N° 118933

02 **ICARUS**
Wall Lamp | N° 120086

03 **CORTESE**
Pendant | N° 118792

04 **FARINI**
Wall Lamp | N° 120479

05 **BILTMORE**
Wall Lamp | N° 120272

06 **ICARUS**
Chandelier | N° 120085



5

LIGHT DEFINES THE ROOM

From sculptural alabaster wall lamps to statement chandeliers, every piece brings its own rhythm by shaping a room's mood, depth, and character. From highlighting architectural details to creating subtle shadows, light influences how a space is experienced.





QUIET LUXURY

Soft neutral tones can dominate a space in the most subtle way, with creams, taupes, and warm greys creating a calm atmosphere. Textures such as the grey travertine on our Ciro coffee table bring a cool, contemporary elegance to any interior. Its blend of silvery hues and warm mineral variations creates a refined, organic look that pairs beautifully with both modern and classic design. Plush tonal seating and rich drapery wrap provide comfort, softening structured detailing for a polished yet welcoming finish.

CIRO

Coffee Table | N° 120310

CORWYN

Candle Holder | N° 120113

CHATTERTON

Box | N° 120096



CLASSICAL REVIVAL MEETS CONTEMPORARY

HERE, WE BALANCE THE WARMTH AND CHARACTER
OF CORAL PINK WITH SOFT NEUTRAL TONES TO
CREATE AN ELEGANT, APPROACHABLE AESTHETIC.





CARLETON

Bar Stool with back | N° 120861

Bar Stool | N° 120860

CENTERPIECES OF STYLE



LÉONARD
Side Table | N° 120246



COFFEE TABLE LARSEN N° 119690

DRAYTON
Side Table | N° 119318



HOXTON
Side Table | N° 119994

LAREDO
Side Table | N° 119797



HENSLEY
Side table | N° 120276

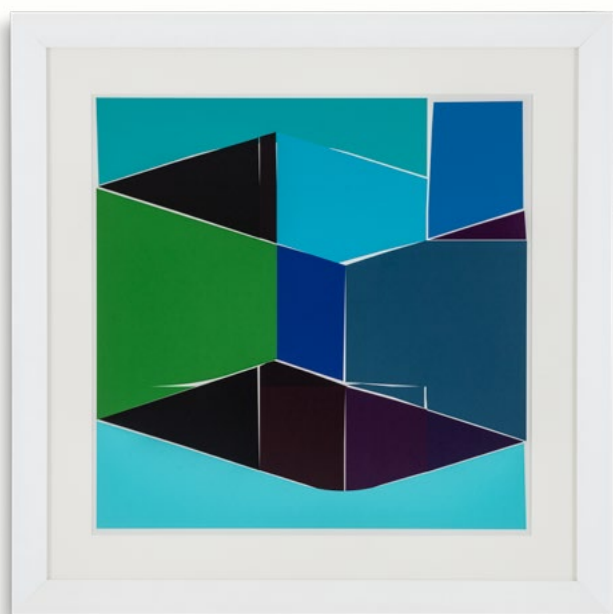




CREATIVE COLOR

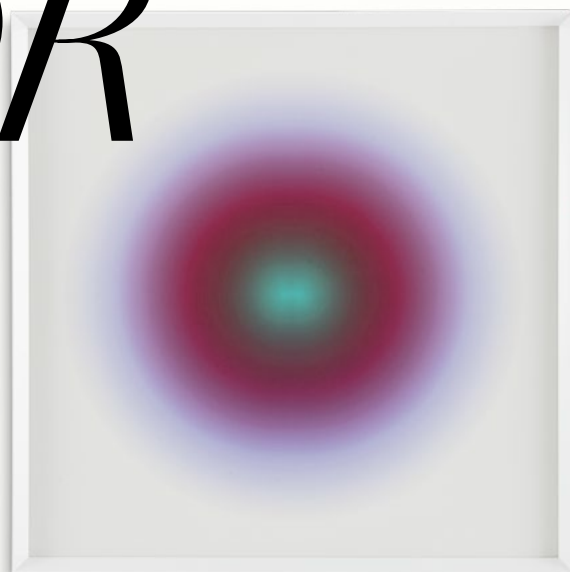
PRINT SILKSCREEN FROM BOISSIÈRE I

By Henri Boissière | N° 121103



PRINT SILKSCREEN FROM BOISSIÈRE II

By Henri Boissière | N° 121104



PRINT CIRCLE FROM BOISSIÈRE

By Henri Boissière | N° 121102



PRINTS PAPER COLORFIELDS

By Michael Willett | N° 121106

WELCOME VISUAL BALANCE

Colorful modern art enhances a space by adding energy and personality. Vibrant hues create a striking focal point that can echo or contrast existing tones in the space, bringing cohesion while adding a sense of creativity. It softens minimalist interiors by adding warmth and emotion, transforming the atmosphere into one that feels expressive, curated, and visually dynamic.



SCULPTURAL OBJECTS, DEFINED BY COLOR

**Our Creative Director talks about
our exclusive, limited-edition
decorative glass collection.**

*“Form gives structure.
Color gives emotion.”*

FLORIAN ROOZEN

My background in floristry taught me to work with color instinctively. To understand how tone, light, and material influence emotion. That sensitivity continues to shape the way I design today. I have always seen vases and bowls not just as functional objects, but as carriers of color, presence, and atmosphere.

This limited edition collection explores color through glass. Each vase and bowl is carefully handcrafted to allow light to pass through, deepen, and shift tone throughout the day. The glass's weight imparts color density and depth, while subtle variations in form make each piece unique.

Color defines the character of each object. The Avoir series, in turquoise green, expresses the spirit of the tropical wilderness. Fresh, vivid, and luminous, the color shifts between green and blue, much like sunlit water in motion. The Marcellus Bowls, in light blue and light pink, bring softness and lightness, while the Courtier Bowl in warm amber adds depth and warmth. The Aureum bowl completes the collection with a contrast of white on the outside and deep green within, revealing color through the dialogue between interior and exterior.

The Evander Vase in frosted white softens both light and space, creating calm and restraint. The Veymar Bowl, in clear glass, feels fluid and organic, its shape echoing the movement of water and allowing reflections to remain pure and uninterrupted.

The Opulent Vase introduces texture to enrich color. Though made from clear glass, its structured surface gently diffuses light, giving the material a nuanced, almost matte appearance. The glass's thickness enhances this effect, creating a layered, tactile presence.

These objects are designed to stand independently. With or without flowers, color remains their primary language. Through proportion, material, and light, each piece becomes an expression of atmosphere, intended to live within an interior as both object and emotion.

CREATIVE DIRECTOR







PENDANT SOLARA N° 118933 // TABLE LAMP SERAPHINA N° 118995 // BAR STOOL CARLETON N° 120168

LET THE EVENING BEGIN

Our latest collection brings the luxury, intimate vibe of a sophisticated evening bar into your home. The Matthew bar features camari green fabric, perfectly complemented by a brushed-brass finish and a sleek black glass top. Our Carleton counter and barstools provide a beautiful blend of comfort and glamour. Accessories such as the Montmartre tray, meticulously crafted in gold-tone antiqued brass and mirrored glass, add charm to impress your guests.



A CORNER OF CALM

Take a seat under the Bilbao mirror, a stunning fusion of natural rattan and artisan craftsmanship. Handwoven in an organic shape and soft, natural tones, it pairs beautifully with the richness of our Marbella swivel chair in plush green velvet. The Rialta floor lamp, with its solid travertine base and vintage brass finish, adds a touch of refined, timeless elegance to the space.

MARBELLA

Swivel Chair | N° 120080

RIALTA

Floor Lamp | N° 119973

BILBAO

Mirror | N° 120093

RATTAN REFINED

Natural materials, such as our handcrafted rattan, harmonize beautifully with other materials, textures, and tones, adding depth and balance. Combined with various shades of green, it brings a calm, modern softness, creating a cocoon-like sense of comfort. A serene retreat crafted for those who value quiet beauty and effortless design.





THE ART OF OUTDOOR LIVING

DISCOVER METICULOUSLY
CRAFTED DESIGNS THAT
BRING QUIET LUXURY AND
EXCEPTIONAL COMFORT
IN THE OPEN AIR.

FROM DAY TO NIGHT

In daylight, the soft presence of curated lanterns elevates your outdoor setting. As evening arrives, their warm glow creates a gentle, inviting ambiance that enhances every moment. Here, outdoor living becomes a serene ritual: thoughtful décor, natural light, and a touch of luxury that flows seamlessly.

RECHARGEABLE OUTDOOR LAMP RISERVA

Outdoor Lamp S | N° 120130 - Outdoor Lamp L | N° 120131 - Outdoor Lamp XL | N° 120132





RISERVA
Outdoor Wall Lamp | N° 120133



OCEANA
Bowl | N° 119579



CHANDLER
Outdoor Planter | N° 120382



PAXTON
Outdoor Chair | N° 119182



SHELDON
Outdoor Planter | N° 120376



MALAGA
Outdoor Modular Sofa | N° 120733 | N° 120706 | N° 120732 | N° 120705





@XSCHÉ

COLOR IS EMOTION

I'm Jean Porsche, an architect and interior designer dedicated to creating spaces where architecture, craftsmanship, and narrative work together. I focus on proportion, light, and materiality to shape environments that feel both sophisticated and lived-in. My work spans private homes, Hotel and hospitality projects, always driven by a deep respect for context and a sense of timeless elegance.

WHAT DOES COLOR MEAN TO YOU WHEN IT COMES TO INTERIOR DESIGN?

Color is emotion. It defines atmosphere, builds identity, and sets the rhythm of a space.

WHERE DO YOU GET YOUR INSPIRATION FROM?

My inspiration comes in many forms: from travelling and discovering hotels and hidden spots in cities; from cinema, where you can live another life and moment; from historic architecture across time; from craftsmanship and its details; and from the cultural dialogue between Europe and the Americas.

HOW DO YOU START DECORATING A SPACE?

Decorating a space needs, first of all, to understand it, and let the space speak to you, its light, or lack of it, its walls, the height, and all the feelings that you get from it, then I build a straightforward narrative—materials, volumes, and finally color.

WHAT IS YOUR TIP FOR CONSUMERS?

Invest in quality pieces and avoid rushing. A good interior grows with intention.

HOW DO YOU DETERMINE WHICH COLORS TO USE?

I read the space: its light, its scale, and the story it needs to tell. From there, I select a palette that enhances mood and proportion.

WHAT ARE THE BEST INVESTMENTS WHEN CREATING A NEW INTERIOR?

Great lighting, exceptional upholstery, and one or two statement pieces that anchor the room.

WHAT ARE YOUR ALL-TIME FAVORITE EICHHOLTZ ITEMS, AND WHICH ITEMS FROM THE NEW COLLECTION APPEAL TO YOU THE MOST? AND WHY?

When Eichholtz released their outdoor collection, I was immediately drawn to the Ocean Club pieces. The white structure with light-blue fabrics felt fresh, crisp, and irresistible. But when they introduced them in green, it felt almost personal—as if they designed them with me in mind. That dark green frame with the white-and-green striped fabric is pure glamour: a mix of Hollywood, Saint-Tropez, and effortless chic.

From the new collection, I could mention many pieces, but I'll focus on three. The Harrold Trolley, with its scalloped detailing, wood veneer, and XL proportions—it even works beautifully as a console. The Stirling bench, upholstered in deep brown velvet, proves that curves can be elegant, giving the piece both softness and sophistication. And finally, the Evanthe cabinet: its classical cornice adds drama, while the sand exterior and white interior create the perfect stage for any accent object you place inside.

*"Color defines atmosphere,
builds identity, and sets
the rhythm of a space"*

JEAN PORSCHE





EICHHOLTZ B.V.

Delfweg 52, 2211 VN
Noordwijkerhout
The Netherlands

Eichholtz.com
Phone: +31 252 515 850
Email: info@eichholtz.com

COPYRIGHT

© 2026 / 2027 Eichholtz B.V.
All rights reserved. No part of this publication may be reproduced, stored in a retrieval system, or transmitted in any form or by any means, electronic, mechanical, photocopying, recording or otherwise, without prior written consent of Eichholtz B.V.



**FOLLOW US
ON INSTAGRAM**

EICHHOLTZ USA

275 North Elm Street, Suite 240,
High Point, NC 27262,
The United States of America

Eichholtz.com/usa
Phone: +1 336 886 1142
Email: info@eichholtzusa.com

DISCLAIMER

Please note that certain pieces featured in this magazine may be discontinued or unavailable in your region. Product specifications - including prices, colors, and materials - are subject to change. For the latest information on our collection, we invite you to visit our website or connect with one of our sales representatives.



**THIS MAGAZINE IS CO₂
OFFSET THROUGH CERTIFIED
CLIMATE PROJECTS.**



Eichholtz designs and manufactures luxury furniture, lighting, accessories, art & objects, rugs, outdoor furniture and more. With an extensive product range in a variety of design styles, we create exclusive lifestyle interiors with global appeal.

E I C H H O L T Z

EST. 1992