
MADE TO ORDER & CUSTOMISATION CONCEPT

FABRIC OVERVIEW



Space to feel comfortably you

ferm
L I V I N G

MADE TO ORDER

An Introduction to the firm LIVING Customisation Concept. Tailor firm LIVING furniture after your specific tastes to create your ideal design.

ONE SIZE DOESN'T FIT ALL

Our homes are distinct, personal spaces that uniquely reflect the people who live there. They say the magic happens in the details, and often, that's what makes us fall in love with a specific piece that we want to move into our home. That is precisely why we have introduced the firm LIVING customisation concept, so that you can tailor selected pieces to fit your specific taste.

With our Made to Order products, you can choose between a wide variety of fabrics and leathers that we have selected among leading textile and leather suppliers, making it possible for you to customise your furniture with an array of materials and colour combinations.

THE PERFECT FIT

All of our sofas and seating collection are included in the customisation concept. Among them are Rico, Turn and Catena, as well as our series of Poufs, the new Kona Bed Mattress and family of Herman Chairs.

For our sofas, you can choose between an exciting variety of textiles that range from faded velvet, cottons, linens and wool, available in an array of colours and patterns from premium fabric suppliers that include Kvadrat, Sørensen Leather and Gabriel.

For our Herman Chairs, there are a wide range of options available: customise everything from the frame to the colour of wooden backrest, and choose between various seat fabrics, woods and leathers to form your ideal chair.

To see a complete selection of our Made to Order materials, please refer to our catalogue, where you can get an overview of all of the different customisation options that we offer.

FABRIC & LEATHER OPTIONS

	CATENA COLLECTION	RICO COLLECTION	HERMAN COLLECTION	TURN COLLECTION	POUF COLLECTION	KONA MATTRESS
<i>Price Group 1</i>						
Cotton Linen	•		•	•		
Cotton				•		
Faded Velvet - Nevotex		•	•		•	
Brushed		•	•	•		
<i>Price Group 2</i>						
Hot Madison - JAB	•		•	•	•	•
Connect - Gabriel			•	•		
Gaja C2C - Gabriel		•	•	•		
<i>Price Group 3</i>						
Dry Cotton Slub	•					
Bouclé		•	•	•		
Solid Leather - Sørensen			•			
Pasadena	•		•	•		•
Wool			•	•		
Gentle - Kvadrat		•				
<i>Price Group 4</i>						
Entire	•	•				
Wool Bouclé	•	•				
Tonus 4 - Kvadrat		•	•	•	•	
Steelcut 2 - Kvadrat			•	•		
Steelcut Trio 3 - Kvadrat			•	•		
Rich Linen	•					
Kuba Cay	•					
<i>Price Group 5</i>						
Hallingdal 65 - Kvadrat	•	•	•	•		
Fiord 2 - Kvadrat			•	•		
<i>Price Group 6</i>						
Aniline Leather - Nevotex			•			
Vidar 4 - Kvadrat		•	•	•		
Nubuck Leather - Nevotex			•			

FADED VELVET

Composition

51% acrylic
40% polyester
9% viscose

Fire rating

EN 1021 1/2: on request
Crib 5: on request
CAL 117: approved

Martindale

60.000

Price group

1

Care instructions

Vacuum frequently on medium power.
Remove wet stains by carefully dabbing with a lint-free cloth or sponge wrung in warm detergent-free water. If the stain remains, we recommend a chemical dry cleaning product (for instance KR2) or professional dry cleaning.

Colour fastness to light

Scale 1-5 or 1-8; 1 worst and 5 or 8 best
5 (8)

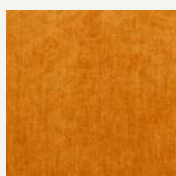
Approved for

Herman
Pouf
Rico

More information [here](#).



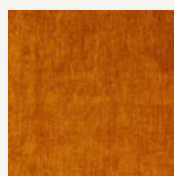
Trend 42K4 Terry pot



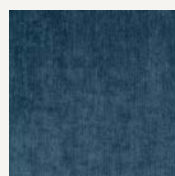
Trend 05C6 Persimon



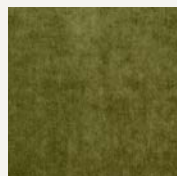
Trend 4203 Camel



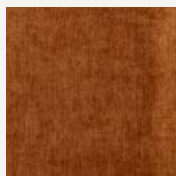
Trend 05EP Saffron



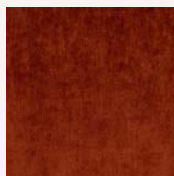
Trend G701 Diesel blue



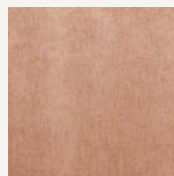
Trend 16CY Blade



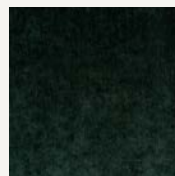
Trend 1712 Cumin



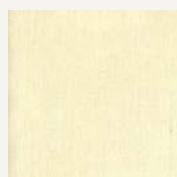
Trend 1388 Deep brick



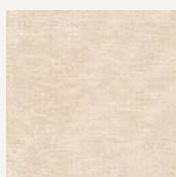
Trend 61/20BKQ
Soft rose



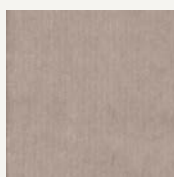
Trend 2450 Solid
Bottle Green



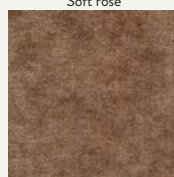
10 off white



56 Natural A6A1



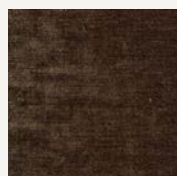
16 sand



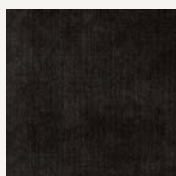
26 Beige 9133



36 light brown



46 Mid brown 81J5



6 mocca



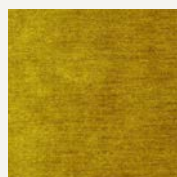
3 Forest 16Y8



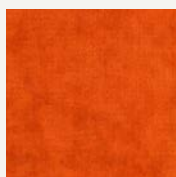
15 Lion 38BNBK



23 olive



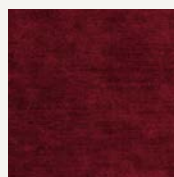
5 Gold 05J2



31 orange



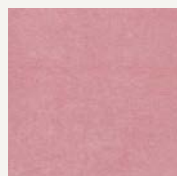
41 Rouge 13K9



1 wine



21 cerise



81 Pastell pink 10E5BK



11 lipstick



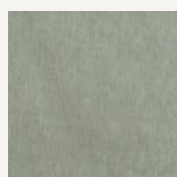
51 Aubergine 6115



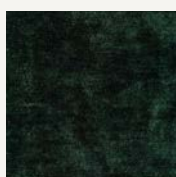
91 Pastell violet 1041BK



71 violet



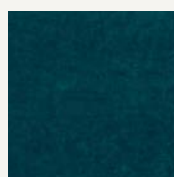
83 Pastell green 1006BK



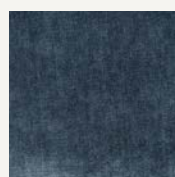
32 Petrol 3004



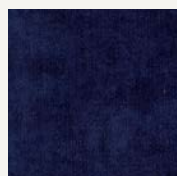
22 turquoise



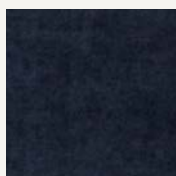
52 Lagoon G7F7BK



12 Denim 30M7



2 midnight



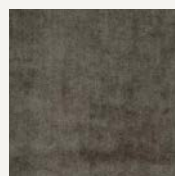
42 Ocean 0232BK



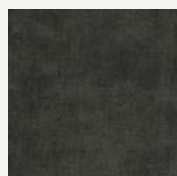
27 Soft silver A629BK



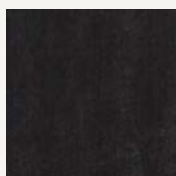
17 concrete



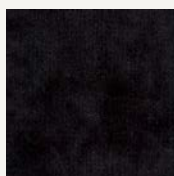
47 Fog 84B8



7 graphite



37 Antracit G2V3BK



4 black

BRUSHED

Composition

100% polyester

Sustainability: Free of heavy metals

Fire rating

EN 1021 1/2: on request

Crib 5: on request

CAL 117: on request

Martindale

90.000

Price group

1

Care instructions

Vacuum frequently on medium power.
Remove wet stains by carefully dabbing with a lint-free cloth or sponge wrung in warm detergent-free water. If the stain remains, we recommend a chemical dry cleaning product (for instance KR2) or professional dry cleaning.

Colour fastness to light

Scale 1-5 or 1-8; 1 worst and 5 or 8 best

5 (5)

Approved for

Herman

Rico

Turn



Off-White



Sand



Brown



Warm Grey



Grey

GAJA C2C

By Gabriel

Composition

100% New Zealand wool

Sustainability: Cradle to cradle

Fire rating

EN 1021 1/2: approved
CAL 117: approved
Crib 5: not approved

Martindale

50.000

Price group

2

Care instructions

Vacuum frequently on medium power.
Remove wet stains by carefully dabbing with a lint-free cloth or sponge wrung in warm detergent-free water. If the stain remains, we recommend a chemical dry cleaning product (for instance KR2) or professional dry cleaning.

Colour fastness to light

Scale 1-5 or 1-8; 1 worst and 5 or 8 best
5-7 (8)

Approved for

Herman
Turn
Rico

More information [here](#).



BOUCLÉ

Composition

35% acrylic
24% polyester
19% viscose
14% cotton
5% linen
3% other fibres

Fire rating

EN 1021 1/2: approved
CAL 117: approved
Crib 5: on request

Martindale

30.000

Price group

3

Care instructions

Vacuum frequently on medium power. Remove wet stains by carefully dabbing with a lint-free cloth or sponge wrung in warm detergent-free water. If the stain remains, we recommend a chemical dry cleaning product (for instance KR2) or professional dry cleaning.

Colour fastness to light

Scale 1-5 or 1-8; 1 worst and 5 or 8 best
4-5 (8)

Approved for

Herman
Turn
Rico



Off White



Dark Grey



Sand

TONUS

By Kvadrat

Composition
90% new wool
10% helanca

Sustainability:
EU Ecolabel
Greenguard Gold

Fire rating
EN 1021 1/2: approved
Crib 5: on request
CAL 117: approved

Martindale
100.000

Price group
4

Care instructions
Vacuum frequently on medium power.
Remove wet stains by carefully dabbing
with a lint-free cloth or sponge wrung in
warm detergent-free water. If the stain
remains, we recommend a chemical dry
cleaning product (for instance KR2) or
professional dry cleaning.

Colour fastness to light
Scale 1-5 or 1-8; 1 worst and 5 or 8 best
5-7 (8)

Approved for
Herman
Pouf
Turn
Rico

More information [here](#).



WOOL BOUCLÉ

Composition

32% cotton, 61% wool and 7% nylon

Fire rating

EN 1021 1/2: pass
Crib 5: not tested
CAL117: pass

Martindale

25.000

Price group

4

Care instructions

Dry clean only

Colour fastness to light

Scale 1-5 or 1-8; 1 worst and 5 or 8 best
4 (5)

Pass for

Catena
Rico



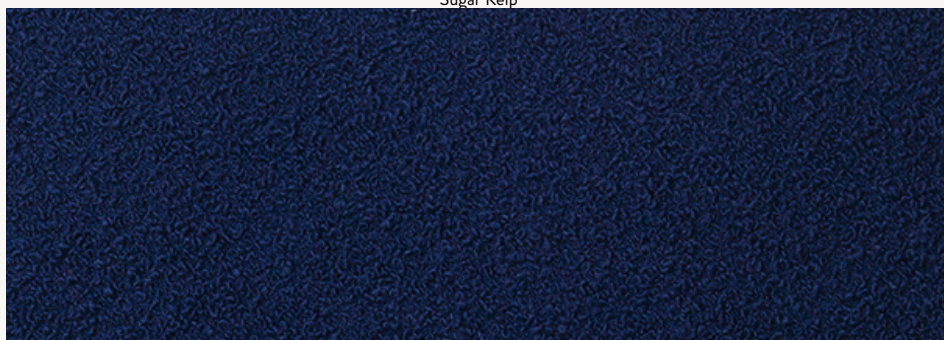
Off-white



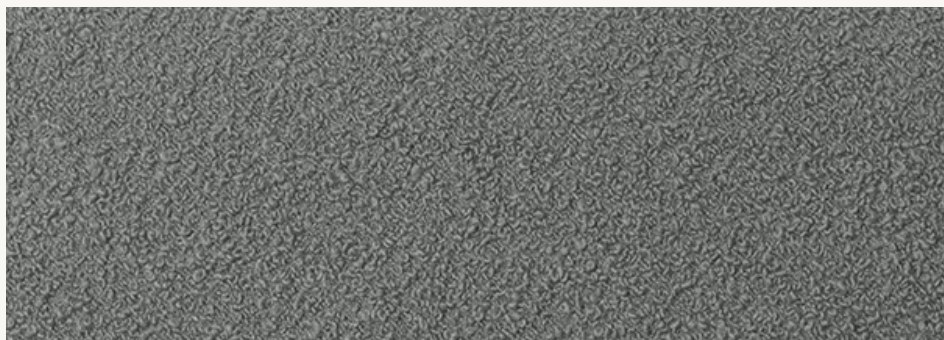
Natural



Sugar Kelp



Dark Blue



Grey

HALLINGDAL

By Kvadrat

Composition

70% new wool
30% viscose

Sustainability

EU Ecolabel
Greenguard Gold

Fire rating

EN 1021 1/2: approved
Crib 5: not approved
CAL 117: approved

Martindale

100.000

Price group

5

Care instructions

Vacuum frequently on medium power.
Remove wet stains by carefully dabbing
with a lint-free cloth or sponge wrung in
warm detergent-free water. If the stain
remains, we recommend a chemical dry
cleaning product (for instance KR2) or
professional dry cleaning.

Colour fastness to light

Scale 1-5 or 1-8; 1 worst and 5 or 8 best
5-7 (8)

Approved for

Herman
Turn
Rico
Catena

More information [here](#).



VIDAR

By Kvadrat

Composition

94% new wool
6% nylon

Sustainability

EU Ecolabel
Greenguard Gold

Fire rating

EN 1021 1/2: approved
Crib 5: not approved
CAL 117: approved

Martindale

100.000

Price group

6

Care instructions

Vacuum frequently on medium power.
Remove wet stains by carefully dabbing
with a lint-free cloth or sponge wrung in
warm detergent-free water. If the stain
remains, we recommend a chemical dry
cleaning product (for instance KR2) or
professional dry cleaning.

Colour fastness to light

Scale 1-5 or 1-8; 1 worst and 5 or 8 best
5-7 (8)

Approved for

Herman
Turn
Rico

More information [here](#).

