
MADE TO ORDER & CUSTOMISATION CONCEPT

FABRIC OVERVIEW



Space to feel comfortably you

ferm
L I V I N G

MADE TO ORDER

An Introduction to the firm LIVING Customisation Concept. Tailor firm LIVING furniture after your specific tastes to create your ideal design.

ONE SIZE DOESN'T FIT ALL

Our homes are distinct, personal spaces that uniquely reflect the people who live there. They say the magic happens in the details, and often, that's what makes us fall in love with a specific piece that we want to move into our home. That is precisely why we have introduced the firm LIVING customisation concept, so that you can tailor selected pieces to fit your specific taste.

With our Made to Order products, you can choose between a wide variety of fabrics and leathers that we have selected among leading textile and leather suppliers, making it possible for you to customise your furniture with an array of materials and colour combinations.

THE PERFECT FIT

All of our sofas and seating collection are included in the customisation concept. Among them are Rico, Turn and Catena, as well as our series of Poufs, the new Kona Bed Mattress and family of Herman Chairs.

For our sofas, you can choose between an exciting variety of textiles that range from faded velvet, cottons, linens and wool, available in an array of colours and patterns from premium fabric suppliers that include Kvadrat, Sørensen Leather and Gabriel.

For our Herman Chairs, there are a wide range of options available: customise everything from the frame to the colour of wooden backrest, and choose between various seat fabrics, woods and leathers to form your ideal chair.

To see a complete selection of our Made to Order materials, please refer to our catalogue, where you can get an overview of all of the different customisation options that we offer.

FABRIC & LEATHER OPTIONS

	CATENA COLLECTION	RICO COLLECTION	HERMAN COLLECTION	TURN COLLECTION	POUF COLLECTION	KONA MATTRESS
<i>Price Group 1</i>						
Cotton Linen	•		•	•		
Cotton				•		
Faded Velvet - Nevotex		•	•		•	
Brushed		•	•	•		
<i>Price Group 2</i>						
Hot Madison - JAB	•		•	•	•	•
Connect - Gabriel			•	•		
Gaja C2C - Gabriel		•	•	•		
<i>Price Group 3</i>						
Dry Cotton Slub	•					
Bouclé		•	•	•		
Solid Leather - Sørensen			•			
Pasadena	•		•	•		•
Wool			•	•		
Gentle - Kvadrat		•				
<i>Price Group 4</i>						
Entire	•	•				
Wool Bouclé	•	•				
Tonus 4 - Kvadrat		•	•	•	•	
Steelcut 2 - Kvadrat			•	•		
Steelcut Trio 3 - Kvadrat			•	•		
Rich Linen	•					
Kuba Cay	•					
<i>Price Group 5</i>						
Hallingdal 65 - Kvadrat	•	•	•	•		
Fiord 2 - Kvadrat			•	•		
<i>Price Group 6</i>						
Aniline Leather - Nevotex			•			
Vidar 4 - Kvadrat		•	•	•		
Nubuck Leather - Nevotex			•			

COTTON LINEN

Composition

60% cotton
40% linen

Fire rating

EN 1021 1/2: pass with treatment
CAL 117: not tested
Crib 5: pass with treatment

Martindale

24.000

Price group

1

Care instructions

Vacuum frequently on medium power.
Remove wet stains by carefully dabbing with a lint-free cloth or sponge wrung in warm detergent-free water. If the stain remains, we recommend a chemical dry cleaning product (for instance KR2) or professional dry cleaning.

Colour fastness to light

Scale 1-5 or 1-8; 1 worst and 5 or 8 best
4 (8)

Pass for

Catena
Herman
Turn



Natural

COTTON

Composition

65% cotton
35% polyester

Fire rating

EN 1021 1/2: pass with treatment
CAL 117: pass with treatment
Crib 5: pass with treatment

Martindale

30.000

Price group

1

Care instructions

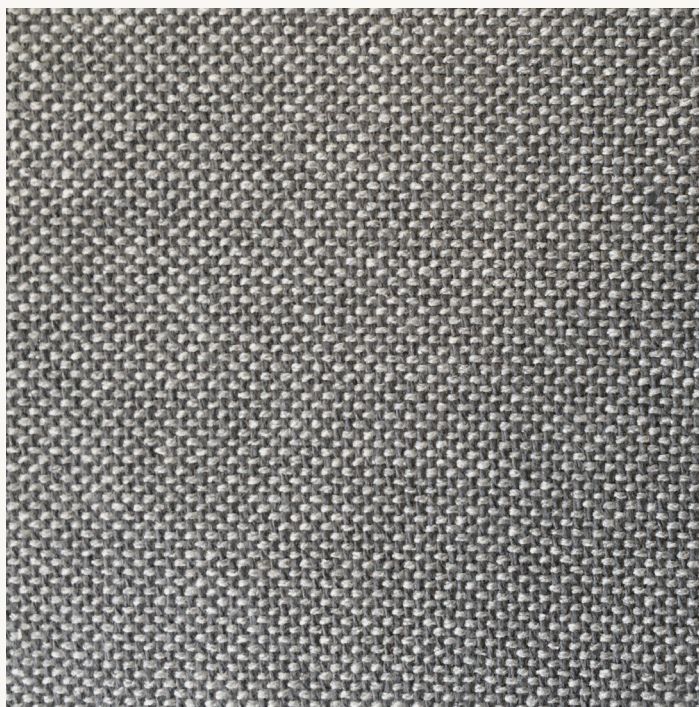
Vacuum frequently on medium power.
Remove wet stains by carefully dabbing
with a lint-free cloth or sponge wrung in
warm detergent-free water. If the stain
remains, we recommend a chemical dry
cleaning product (for instance KR2) or
professional dry cleaning.

Colour fastness to light

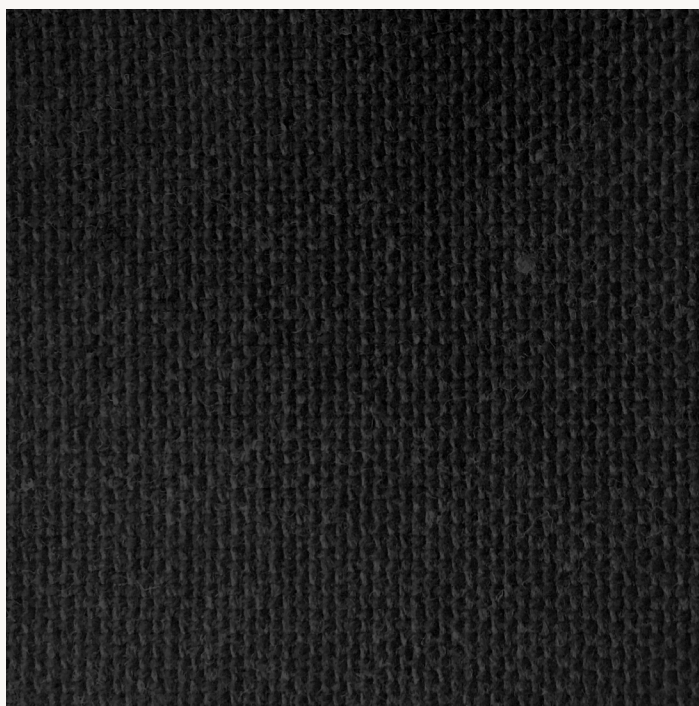
Scale 1-5 or 1-8; 1 worst and 5 or 8 best
5 (5)

Pass for

Turn



Light Grey



Dark Grey

BRUSHED

Composition

100% polyester

Sustainability: Free of heavy metals

Fire rating

EN 1021 1/2: pass with treatment

Crib 5: pass with treatment

CAL 117: pass with treatment

Martindale

90.000

Price group

1

Care instructions

Vacuum frequently on medium power.
Remove wet stains by carefully dabbing with a lint-free cloth or sponge wrung in warm detergent-free water. If the stain remains, we recommend a chemical dry cleaning product (for instance KR2) or professional dry cleaning.

Colour fastness to light

Scale 1-5 or 1-8; 1 worst and 5 or 8 best

5 (5)

Pass for

Herman
Rico
Turn



Off-White



Sand



Brown



Warm Grey



Grey

HOT MADISON

By Jab

Composition

63% cotton
37% polyester

Fire rating

EN 1021 1/2: pass with treatment
CAL 117: pass
Crib 5: pass with treatment

Martindale

55.000

Price group

2

Care instructions

Vacuum frequently on medium power.
Remove wet stains by carefully dabbing with a lint-free cloth or sponge wrung in warm detergent-free water. If the stain remains, we recommend a chemical dry cleaning product (for instance KR2) or professional dry cleaning.

Colour fastness to light

Scale 1-5 or 1-8; 1 worst and 5 or 8 best
4-5 (8)

Pass for

Catena
Herman
Turn
Pouf
Kona

More information [here](#).



HOT MADISON

By Jab

Composition

63% cotton
37% polyester

Fire rating

EN 1021 1/2: pass with treatment
CAL 117: not tested
Crib 5: pass with treatment

Martindale

55.000

Price group

2

Care instructions

Vacuum frequently on medium power.
Remove wet stains by carefully dabbing with a lint-free cloth or sponge wrung in warm detergent-free water. If the stain remains, we recommend a chemical dry cleaning product (for instance KR2) or professional dry cleaning.

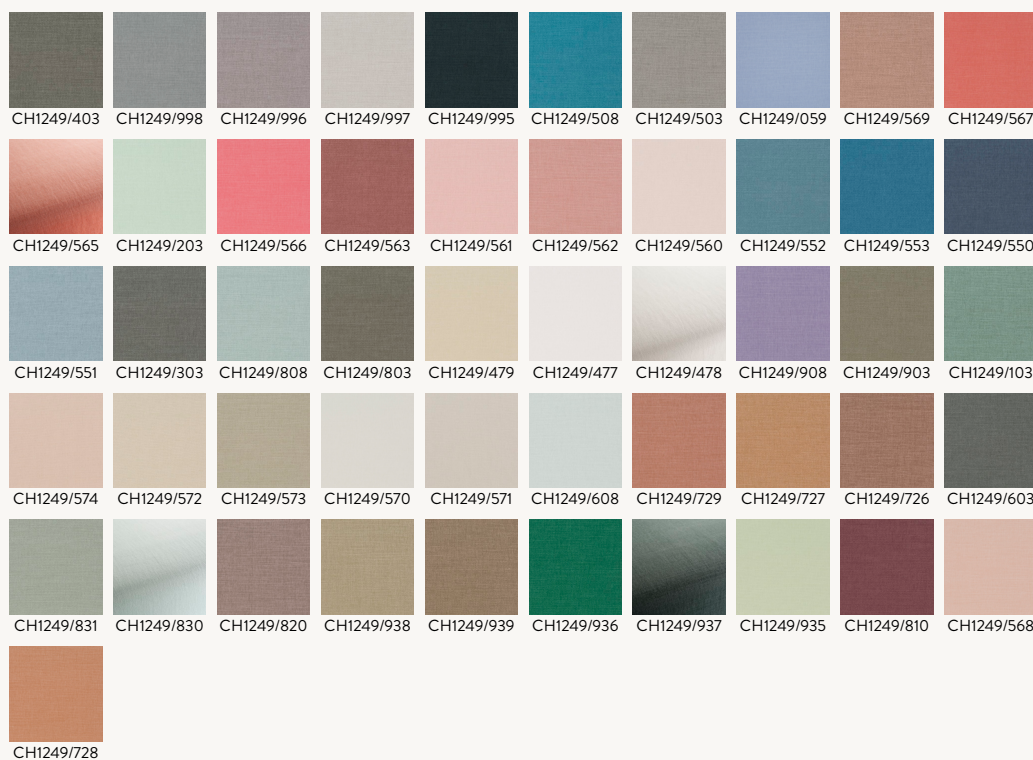
Colour fastness to light

Scale 1-5 or 1-8; 1 worst and 5 or 8 best
4-5 (8)

Pass for

Catena
Herman
Turn
Pouf
Kona

More information [here](#).



GAJA C2C

By Gabriel

Composition

100% New Zealand wool

Sustainability: Cradle to cradle

Fire rating

EN 1021 1/2: pass
CAL 117: pass
Crib 5: not tested

Martindale

50.000

Price group

2

Care instructions

Vacuum frequently on medium power.
Remove wet stains by carefully dabbing with a lint-free cloth or sponge wrung in warm detergent-free water. If the stain remains, we recommend a chemical dry cleaning product (for instance KR2) or professional dry cleaning.

Colour fastness to light

Scale 1-5 or 1-8; 1 worst and 5 or 8 best
5-7 (8)

Pass for

Herman
Turn
Rico

More information [here](#).



PASADENA

Composition

34% linen
27% viscose
17% polyester
12% cotton
8% wool
2% acrylic

Fire rating

EN 1021 1/2: pass with treatment
CAL 117: pass
Crib 5: pass with treatment

Martindale

30.000

Price group

3

Care instructions

Vacuum frequently on medium power.
Remove wet stains by carefully dabbing with a lint-free cloth or sponge wrung in warm detergent-free water. If the stain remains, we recommend a chemical dry cleaning product (for instance KR2) or professional dry cleaning.

Colour fastness to light

Scale 1-5 or 1-8; 1 worst and 5 or 8 best
5 (8)

Pass for

Kona
Turn
Catena
Herman



Sand/Black

WOOL

Composition

75% wool

25% polyester

Sustainability: Cradle to cradle

Fire rating

EN 1021 1/2: pass

CAL 117: not tested

Crib 5: not tested

Martindale

40.000

Price group

3

Care instructions

Vacuum frequently on medium power. Remove wet stains by carefully dabbing with a lint-free cloth or sponge wrung in warm detergent-free water. If the stain remains, we recommend a chemical dry cleaning product (for instance KR2) or professional dry cleaning.

Colour fastness to light

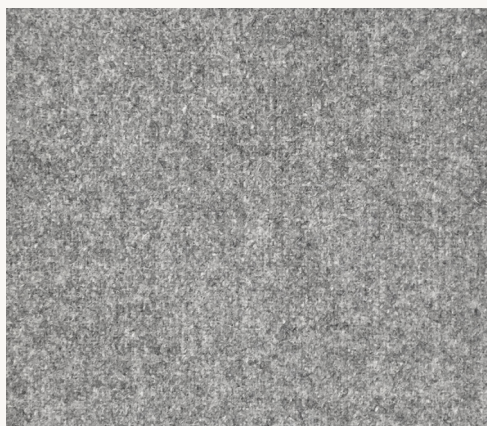
Scale 1-5 or 1-8; 1 worst and 5 or 8 best

4 (5)

Pass for

Herman

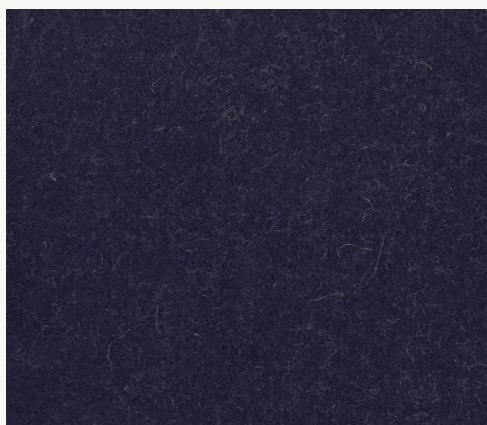
Turn



Light Grey



Dark Grey



Dark Blue



Dark Green



Sand



Dark Brown



Natural

BOUCLÉ

Composition

35% acrylic
24% polyester
19% viscose
14% cotton
5% linen
3% other fibres

Fire rating

EN 1021 1/2: pass
CAL 117: pass
Crib 5: pass with treatment

Martindale

30.000

Price group

3

Care instructions

Vacuum frequently on medium power. Remove wet stains by carefully dabbing with a lint-free cloth or sponge wrung in warm detergent-free water. If the stain remains, we recommend a chemical dry cleaning product (for instance KR2) or professional dry cleaning.

Colour fastness to light

Scale 1-5 or 1-8; 1 worst and 5 or 8 best
4-5 (8)

Pass for

Herman
Turn
Rico



Off White



Dark Grey



Sand

TONUS 4

By Kvadrat

Composition
90% new wool
10% helanca

Sustainability:
EU Ecolabel
Greenguard Gold

Fire rating
EN 1021 1/2: pass
Crib 5: pass with treatment
CAL 117: pass

Martindale
100.000

Price group
4

Care instructions
Vacuum frequently on medium power.
Remove wet stains by carefully dabbing
with a lint-free cloth or sponge wrung in
warm detergent-free water. If the stain
remains, we recommend a chemical dry
cleaning product (for instance KR2) or
professional dry cleaning.

Colour fastness to light
Scale 1-5 or 1-8; 1 worst and 5 or 8 best
5-7 (8)

Pass for
Herman
Pouf
Turn
Rico

More information [here](#).



STEELCUT TRIO 3

By Kvadrat

Composition

90% new wool
10% nylon

Sustainability

EU Ecolabel
Greenguard Gold

Fire rating

EN 1021 1/2: pass
Crib 5: pass with treatment
CAL 117: pass

Martindale

100.000

Price group

4

Care instructions

Vacuum frequently on medium power.
Remove wet stains by carefully dabbing
with a lint-free cloth or sponge wrung in
warm detergent-free water. If the stain
remains, we recommend a chemical dry
cleaning product (for instance KR2) or
professional dry cleaning.

Colour fastness to light

Scale 1-5 or 1-8; 1 worst and 5 or 8 best
5-7 (8)

Pass for

Herman
Turn

More information [here](#).



HALLINGDAL 65

By Kvadrat

Composition

70% new wool
30% viscose

Sustainability

EU Ecolabel
Greenguard Gold

Fire rating

EN 1021 1/2: pass
Crib 5: pass
CAL 117: pass

Martindale

100.000

Price group

5

Care instructions

Vacuum frequently on medium power.
Remove wet stains by carefully dabbing
with a lint-free cloth or sponge wrung in
warm detergent-free water. If the stain
remains, we recommend a chemical dry
cleaning product (for instance KR2) or
professional dry cleaning.

Colour fastness to light

Scale 1-5 or 1-8; 1 worst and 5 or 8 best
5-7 (8)

Pass for

Herman
Turn
Rico
Catena

More information [here](#).



FIORD 2

By Kvadrat

Composition

92% new wool
8% nylon

Sustainability

EU Ecolabel
Greenguard Gold

Fire rating

EN 1021 1/2: pass
Crib 5: pass with treatment
CAL 117: pass

Martindale

60.000

Price group

5

Care instructions

Vacuum frequently on medium power.
Remove wet stains by carefully dabbing
with a lint-free cloth or sponge wrung in
warm detergent-free water. If the stain
remains, we recommend a chemical dry
cleaning product (for instance KR2) or
professional dry cleaning.

Colour fastness to light

Scale 1-5 or 1-8; 1 worst and 5 or 8 best
6 (8)

Pass for

Herman
Turn

More information [here](#).



VIDAR 4

By Kvadrat

Composition

94% new wool
6% nylon

Sustainability

EU Ecolabel
Greenguard Gold

Fire rating

EN 1021 1/2: pass
Crib 5: not tested
CAL 117: pass

Martindale

100.000

Price group

6

Care instructions

Vacuum frequently on medium power.
Remove wet stains by carefully dabbing
with a lint-free cloth or sponge wrung in
warm detergent-free water. If the stain
remains, we recommend a chemical dry
cleaning product (for instance KR2) or
professional dry cleaning.

Colour fastness to light

Scale 1-5 or 1-8; 1 worst and 5 or 8 best
7 (8)

Pass for

Herman
Turn
Rico

More information [here](#).

