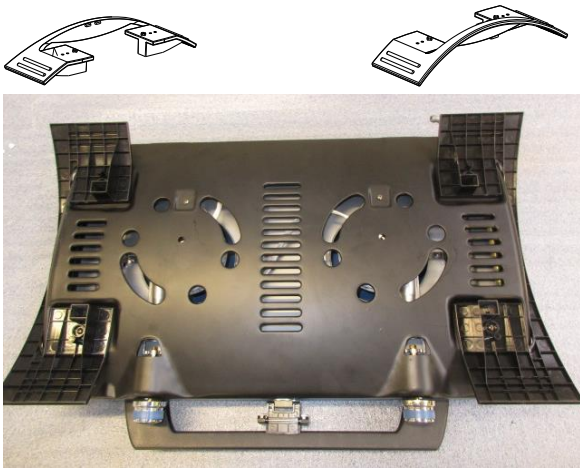


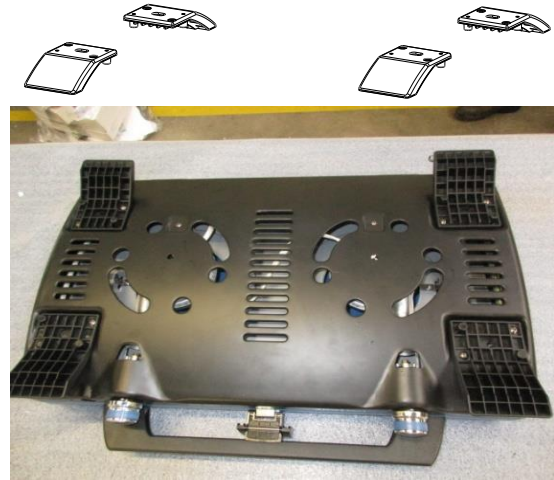
400 – 600 SERIES STOVES

Replacing the previous designed feet by the new designed feet

This change applies to the **400 S/ST/SG – 600 SV** stoves and manufactured before 2018.







BEFORE



AFTER

Use the spare part **5010004948** (PLASTIC FEET 400-600 SERIES STOVE 2018) containing:

- 2 feet 
- 4 screw D4.2 L9.5 for the 400 S/SG and 600 SV models (2 screws per foot) 
- 4 screws M4 X 8 for the 400 ST model (2 screws per foot) 
- 4 nuts M4 for the 400 ST model (2 nuts per foot) 

TOOLING

Make sur you have the right tools.

STOVE MODELS	TOOL
ALL	1 electric drill
ALL	1 cross-head screwdriver
400 S/SG and 600 SV	1 metal drill of 3
400 ST	1 metal drill of 4
400 ST	1 wrench of 7

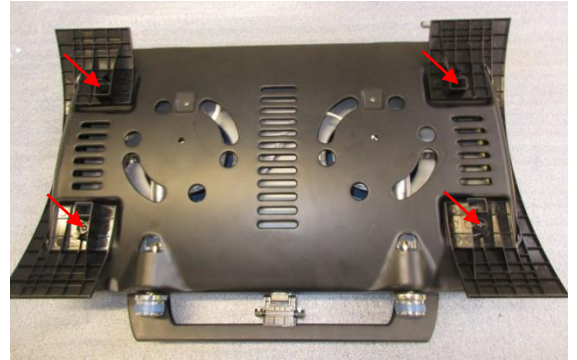
400 S/SG et 600 SV MODELS

Remove the old feet

Each foot is fixed with 2 screws.

1 - Remove the pan supports and the cooking grids.
Close the lid and turn the stove upside down onto a protection sheet (in order to protect the lid from scratches).

2 - Unscrew the 4 screws (red arrows on the picture) and gently remove the feet.



setting up a foot

Use 2 screws D4.2 L9.5



3 - Place the foot against the stops of the flat area.



4 – Hold the foot and make a mark for each of the 2 holes using your electric drill.

Do not make the holes yet.



5 –When the hole marks are done, remove the foot and make the 2 holes on the flat area.
Remove the metal burrs using a piece of clothe.



6 –Place a first screw into a hole of the foot. Place the foot on the flat area and tighten the screw (not too much).



7 – Place and tighten the second screw. Do not tighten too much.





8 – For each of the 3 other feet, repeat the operations 3-4-5-6-7.



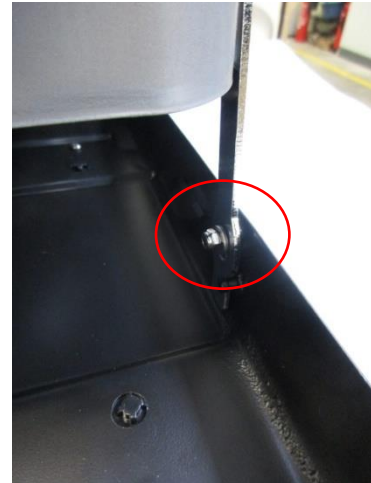
400 ST MODEL

Remove the old feet

Each foot is fixed with 2 screws from the inner tray.

1 – Open the lid. Remove the pan supports, the cooking grids and the toaster.

2 – With the wrench of 7, remove the nuts and washers located at each end of the articulated tray axes.



3 – Open the tray.

Unscrew the 4 screws (red arrows on the picture) and gently remove the feet.



4 – Close the lid and tray. Turn the stove upside down onto a protection sheet (in order to protect the lid from scratches)

Setting up a foot

use the following screws :

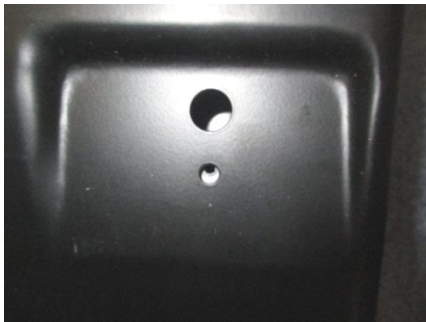
2 screw M4 X 8



, 2 nuts M4

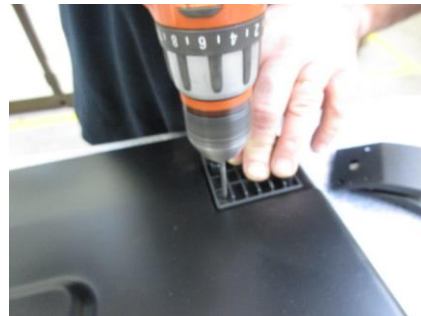


5 - Place the foot against the stops of the flat area.



6 – Hold the foot and make a mark for each of the 2 holes using your electric drill.

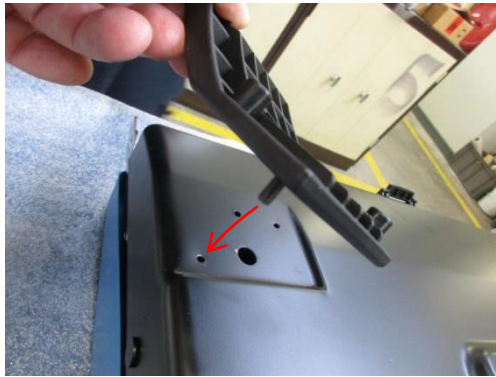
Do not make the holes yet.



7 – When the hole marks are done, remove the foot and make the 2 holes on the flat area.
Remove the metal burrs using a piece of clothe.



8 –Place a first screw in one of the 2 holes of the foot. Place the foot on the flat area.



9 –Set the bottom tray upright. While holding the screw with your finger (a), place the nut on the screw placed at the other side of the tray (b).



10 – Place the second nut on the second screw.

11 – When holding the screw with your screwdriver, tighten the nut with the wrench of 7. Do not tighten too much.



12 – For each of the 3 other feet, repeat the operations 5 to 11.

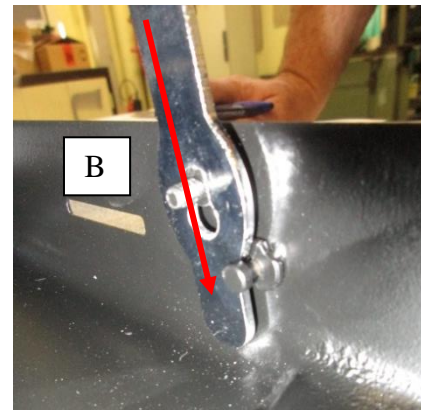
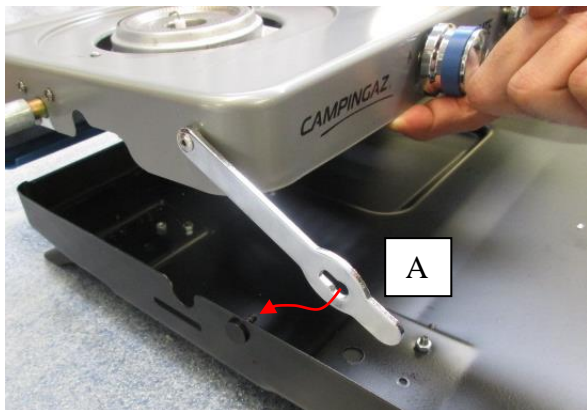
13 – when the 4 feet are in place, put the stove right side up. Open the lid.

14 - Set back the washers and nuts at each end of the tray axles.

For each axle :

A – Place the axle hole into the threaded part placed on the side of the tray.

B – Place the threaded part into the hole and lower the axle to move the threaded part into the top of the hole.



C –Place the washers first, then the nuts. Tighten with the wrench of 7.
Do not tighten too much.

Caution: Make sure that the washers are not too tight. If not, you could not open the stove.

