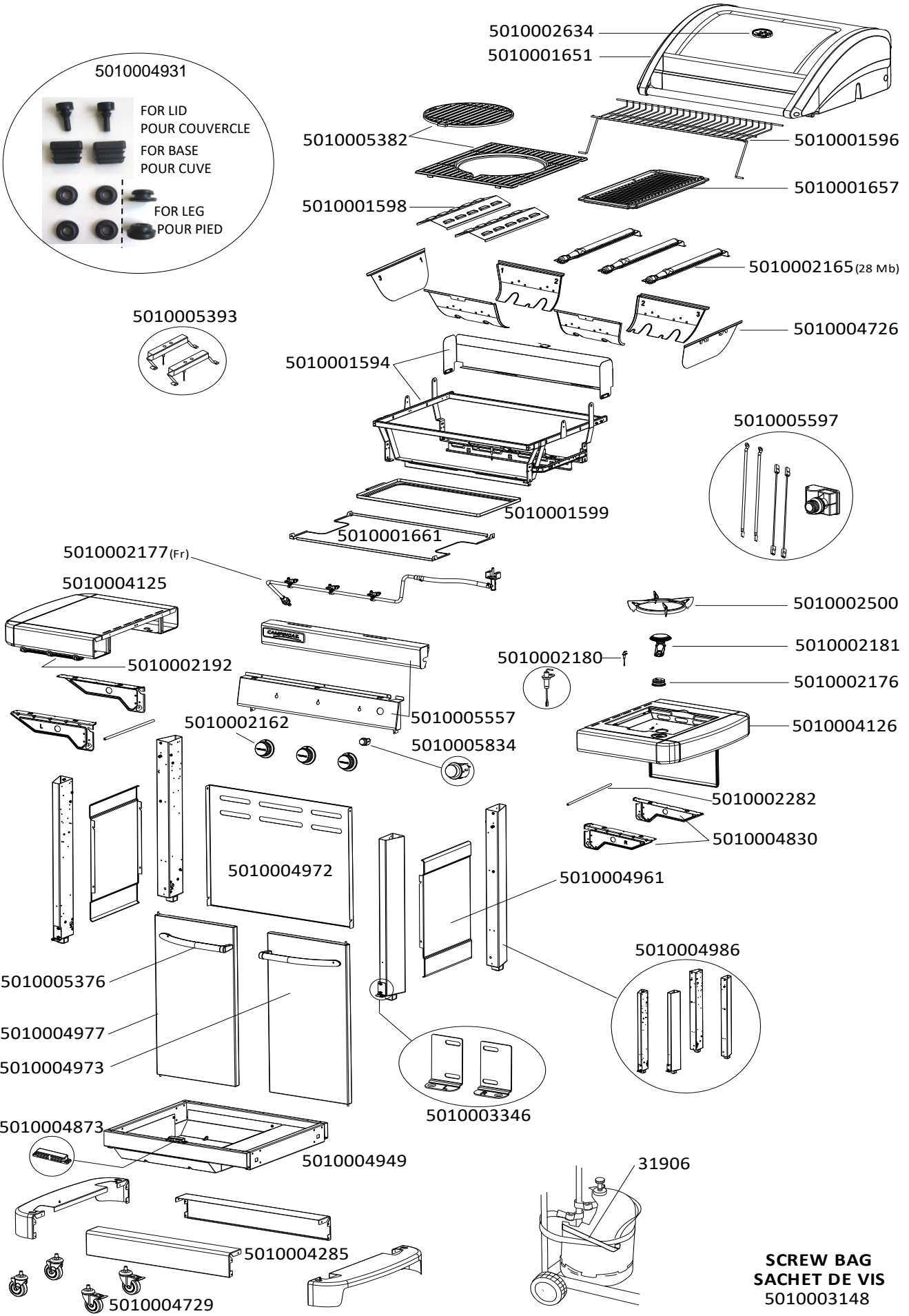
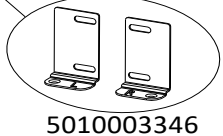
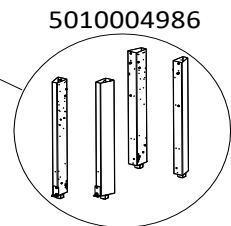
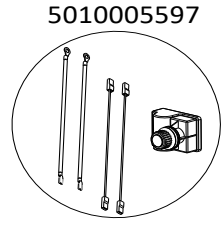
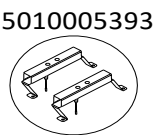


**BARBECUE : 3 SERIES  
CLASSIC LXSD PLUS**

**CAMPINGAZ**



**BARBECUE : 3 SERIES  
CLASSIC LXSD PLUS**



**SCREW BAG  
SACHET DE VIS  
5010003148**

# BARBECUE : 3 SERIES CLASSIC LXSD PLUS



SPARE PARTS REF.	POINTS	EN DESCRIPTIONS	FR DESCRIPTIONS
31906	30	CYLINDER STRAP	SANGLE BOUTEILLE
5010001594	240	BASE FRAME + WINDSHIELD	CADRE SUPPORT DE CUVE + PAREVENT
5010001596	80	WARMING GRID	GRILLE DE MIJOTAGE
5010001598	100	STEEL HEAT DIFFUSER (x1)	DIFFUSEUR DE CHALEUR ACIER (x1)
5010001599	50	GREASE PLATE	PLATEAU RAMASSE GRAISSE
5010001651	550	LID WITH THERMOMETER - BLACK	COUVERCLE AVEC THERMOMETRE - NOIR
5010001657	230	REVERSIBLE ENAMELLED SMALL CAST IRON GRIDDLE - SHINY	PETITE PLAQUE DE CUISSON FONTE EMAILLEE REVERSIBLE - BRILLANTE
5010001661	60	HEAT SHIELD	PARE CHALEUR
5010002162	70	KNOB (x2)	VOLANT (x2)
5010002165	120	STAINLESS STEEL BURNER 28Mb	BRULEUR INOX 28Mb
5010002176	40	KIT OF 2 KNOBS FOR SIDE STOVE	KIT DE 2 VOLANTS POUR RECHAUD LATERAL
5010002177	240	STOVE GAS PIPE 28Mb 1/2" (Fr)	TUBULURE RECHAUD 28Mb 1/2" (Fr)
5010002180	40	ELECTRODE FOR SIDE STOVE	ELECTRODE RECHAUD LATERAL
5010002181	50	SIDE STOVE BURNER	BRULEUR POUR RECHAUD LATERAL
5010002192	40	USTENSIL HOOK	PORTE USTENSILES
5010002282	30	REINFORCEMENT WIRE SIDE SHELF	FIL RENFORT ETAGERE
5010002500	50	SIDE STOVE PAN SUPPORT	SUPPORT DE CASSEROLE RECHAUD LATERAL
5010002634	50	THERMOMETER WITH BEZEL	THERMOMETRE AVEC COUPELLE
5010003148	60	SCREW BAG	SACHET DE VIS
5010003346	40	AXLE SUPPORTS FOR DOORS (MOD. 2016 AND AFTER) + 2 CHASSIS SQUARES	SUPPORTS AXE PORTES (MOD. A PARTIR DE 2016) + 2 EQUERRES CHASSIS
5010004125	190	LEFT OR RIGHT SIDE TABLE WITH USTENSIL HOOK - TEXTURED DARK GREY	ETAGERE GAUCHE OU DROITE AVEC PORTE USTENSILES - GRAINE GRIS FONCE
5010004126	220	SIDE BURNER SHELF W/LID - TEXTURED DARK GREY	ETAGERE RECHAUD LATERAL AVEC COUVERCLE - GRAINE GRIS FONCE
5010004285	170	SKIRT	JUPE
5010004726	290	KIT OF REMOVABLE PARTS (FIREBOX)	KIT DE PARTIES AMOVIBLES (CUVE)
5010004729	70	SET OF WHEELS (x2)	ENSEMBLE ROUES (x2)
5010004830	60	SIDE SHELF SUPPORTS (RIGHT AND LEFT) - TEXTURED DARK GREY	SUPPORTS ETAGERE (DROITE ET GAUCHE) - GRAINE GRIS FONCE
5010004873	50	MAGNETS (X2)	AIMANTS (X2)
5010004931	50	LID PADS(x2) + BASE CUSHIONS(x2) + LEG GROMMETS(x4)	PATINS COUVERCLE(x2) + BOUCHONS CUVE(x2) + RONDELLES PIED(x4)
5010004949	250	CHASSIS (MOD. FROM 2018)	CHASSIS (MOD. A PARTIR DE 2018)
5010004961	70	LEFT OR RIGHT SIDE PANEL (TEXTURED DARK GREY)	PANNEAU LATERAL GAUCHE OU DROITE (GRAINE GRIS FONCE)
5010004972	90	REAR PANEL	PANNEAU ARRIERE
5010004973	240	RIGHT DOOR WITHOUT HANDLE - DARK GREY	PORTE DROITE SANS POIGNEE - GRIS FONCE
5010004977	240	LEFT DOOR WITHOUT HANDLE - DARK GREY	PORTE GAUCHE SANS POIGNEE - GRIS FONCE
5010004986	290	KIT LEGS (x4)	KIT PIEDS (x4)
5010005376	120	CHROMED STEEL HANDLE (LEFT OR RIGHT) + SCREWS (MOD. FROM 2019)	POIGNEE ACIER CHROME (GAUCHE OU DROITE) + VIS (MOD. A PARTIR DE 2019)
5010005382	300	ENAMELLED CAST IRON GRID (FRAME + CIRCLE) - SHINY (MOD. FROM 2019)	GRILLE FONTE EMAILLEE (CADRE+CERCLE) - BRILLANTE (MOD. A PARTIR DE 2019)
5010005393	100	KIT OF ELECTRODES + HOUSINGS	KIT ELECTRODES + SUPPORTS
5010005557	210	TOP + BOTTOM CONTROL PANELS - TEXTURED DARK GREY	CONSOLES HAUT + BAS - GRAINE GRIS FONCE
5010005597	180	ELECTRONIC IGNITION SET (2/4 OUTLETS) WITH CONNECTION WIRES	KIT ALLUMAGE ELECTRONIQUE (2/4 SORTIES) AVEC CABLES DE CONNECTIONS
5010005834	40	PUSH BUTTON ELECTRONIC IGNITOR (SILVER CAP)	BOUTON POUSSOIR TRAIN D'ETINCELLES (BOUTON ARGENTE)