



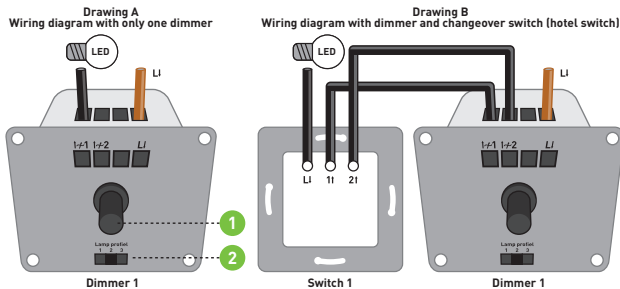
2485H

INSTRUCTION MANUAL LED WALL DIMMER 2485H

This LED wall dimmer [3-150W/VA] is suitable for dimming of dimmable [retrofit] LED lamps [230V, max 70W], incandescent and halogen lamps [230V, max 120W], 12V halogen lamps in combination with dimmable electronic transformers [120W max] and low voltage LED lamps in combination with dimmable LED drivers [120W max]. This dimmer has a soft start, in order to prevent peak currents that have a negative effect on the life span of the LED lamps. With the 2 way switch, this dimmer can control a [LED] lamp in combination with an alternating switch [hotel switch]. Trailing edge dimmer [R,C'], 230V/50Hz.

FUNCTIONING OF THE DIMMER:

After safe installation, switch on the lamp by pressing the push/rotary knob **(1)**. Turn the knob **(1)** to the minimum value by turning it all the way counterclockwise. The desired starting brightness can be set [profile position 1, 2 or 3] with the slide switch **(2)** [at the lowest dimming position]. The maximum brightness is reached by turning the knob **(1)** clockwise. The correct profile for the [LED] lamp has been found, as soon as the dimming of the LED lamp is stable [from min. to max. brightness] and when the adjustment range is satisfactory.



INSTALLATION:

- Work safely! Before installing, first turn off the power.
- Strip the wires sufficiently (approx. 1 cm).
- Connect the dimmer according to the drawing; if there is only one dimmer, follow drawing A. If it is a hotel switch, follow drawing B
- Screw the dimmer into the flush-mounted box (when the lamp is off, press the rotary switch **(1)**).
- Turn the rotary knob **(1)** to select the desired dimming position of the [LED] lamp.
- Use the slide switch **(2)** to set the desired minimum dimming position [1, 2 or 3] with the rotary switch **(1)** set to the minimum position [counterclockwise].
- Mount the frame, the cover plate and the knob.

TOOLS:

- Small flat screwdriver.

Note: Use the Tradim LED Dimming stabiliser to properly dim unstable [filament/led] light. Art. LEDDS6001
The manufacturer is not liable for any damage caused by incorrect use or improper installation of the dimmer.
The warranty period is 2 years from the date of purchase, to be proven to the retailer by means of your purchase receipt.

Keep this manual in a safe place in case it is needed for (re)installation!

TRADIM Aalsbergen 9, 6942 SE Didam, The Netherlands www.tradim.nl