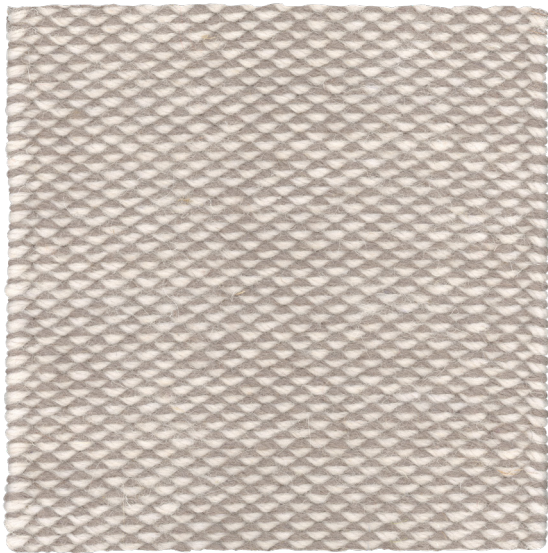




FRANKLY
AMSTERDAM





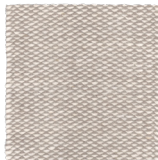
EAGLE EYE

Available as	Rug
Design	Frankly Amsterdam
Size	Max width 5 meters
Technique	Hand woven (combi-loom)
Colors	Choose from Woolbox
Color Design	Frankly Amsterdam
Material	100% Wool
Advantages	<ul style="list-style-type: none">+ maximum width 5 meters+ unlimited length+ extremely high quality+ 110 color options, see our wool colorbox+ dynamic 3D effect+ Delivery time for handwoven rugs is 6 weeks
Endings	Blind (1), plain (2) <ul style="list-style-type: none">1. 2. 

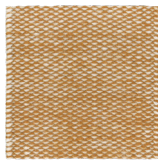
Eagle Eye is part of our basic handwoven rug collection. Together with Mile Stone and Bottom Line, it is the first handwoven quality we have launched.

Because our production has over 50 years of experience producing handwoven rugs, we know exactly where difficulties lay. And how to avoid them. The rugs we make are high quality, beautiful, natural and handmade in Europe. They are also durable and longlasting because they are made using our measure of quality to live up to.

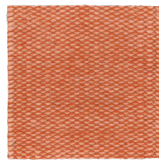
For all handweave qualities goes the same: choose your own colors. Check in the informationsheet what materials are used, and pick them out of the corresponding colorbox. Easy as pie!



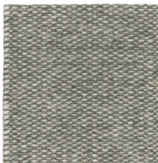
5101



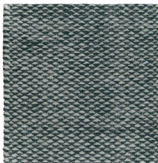
5102



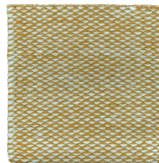
5103



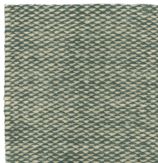
5104



5105



5106



5107

CARE INSTRUCTIONS

- We advise you to **vacuum** the rug once or twice a week with a normal (upright or cylinder) vacuum cleaner but without the brush or beater bar engaged. Rugs with a high pile need to be vacuumed even more often.
- Do not use a vacuumer with a rotating brush, this will damage the yarn.
- Rugs made from natural materials are subject to some **pilling** during the first few months. This is a common characteristic of natural cut fibers and will disappear after 3 or 4 months of normal use.
- A dry environment can result in extra pilling of the yarn. A **humidity** between 50-70% will benefit the lifecycle of your rug.
- In order to avoid '**regular use marks**', we advise you to turn the rug every once in a while.
- **Wet stains** need to be removed immediately, before the yarn absorbs the fluid. Absorb the stain using a strong absorbing paper (like kitchen paper). Do not, in any case, rub or put pressure on the rug when wet. This can damage the fibers and the structure of the rug.
- **Light stains** can safely be treated with JAMES cleaning agents, which have been successfully tested on our products. Please follow the instructions of the JAMES staindisc, also shown on our site. We can not guarantee safe use of cleaning agents by any other brand, since they have not been tested.

- Please do not use highly acidic cleaning agents to remove stains from your rug. This will cause discoloration of the yarn.
- In case of **heavy staining** or transferred dirt, we advise you to always have your rug drycleaned by a specialist in rug cleaning. Please state clearly that this rug needs to be cleaned without using water.
- When in **doubt**, please don't hesitate to contact us, or take a look on our website, www.frankly.amsterdam/careinstructions, for more information.

WARRANTY

- Frankly Amsterdam **guarantees** its rugs for 2 years of normal use.
- All our products are made with care. In case a **manufacturing defect** escaped our attention, please inform us within 14 days after delivery and leave the product unused.
- Small differences or **irregularities** in color, weft or size may occur. This is inherent to the use of natural fibers and has to be accepted when within normal commercial tolerances.
- Frankly Amsterdam will not accept any complaint if shading is concerned.

