

LEDVION SMART DIMMER:

This RLC dimmer has been developed specially for dimmable LED lamps. Additionally, the minimum brightness setting of the dimmer can be adjusted to achieve the optimum dimming range for a particular load. You may need to refer to these instructions if you change your lights to a different type at a later date so please keep them for reference.

TECHNICAL DATA:

Operating Voltage	220-240V
Frequency	50/60Hz [±]
Max. light sources	20* (multiple LEDs possible per driver)
Max. number of LED drivers	20*
Maximum load trailing edge	250W/VA / Pf ≥ 0.9
Maximum load leading edge	150W/VA / Pf ≥ 0.9
Minimum load universal	5W
Dimming mode	Universal
Control method	Multiway
Ambient temperature	<60°C (T _{amb} = 60°C)
Dimmable LED lamps trailing edge	5-250W/VA
Dimmable LED lamps leading edge	10-150W/VA

* NOTE: When using high quality LED drivers with low inrush currents

WARNING!

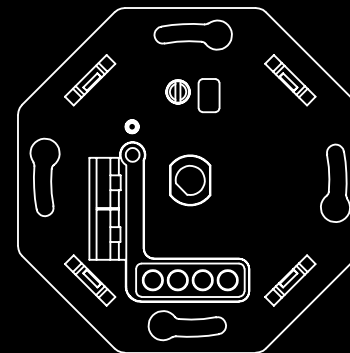
Certain light sources may not behave according to their power rating when used with a dimmer. An overload will result in the safety feature switching the dimmer off. We always recommend to connect under the suggest load.

Ledvion

SMART LED DIMMER

Manual for LED dimmer switch

LV10005



5692 DH Son en Breugel
Ekkersrijt 4304
The Netherlands
www.ledvion.com



INSTALLATION:

Make sure the electricity is switched off before any operation, connect the wire as shown in the "wire connection".

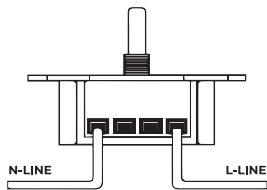
Install the dimmer into the junction box.

Switch on electricity, push shaft button to ON or OFF, turn the shaft to dimming brightness. When lamps are flashing, adjust the min setting to the minimum brightness level, make lamps stable.

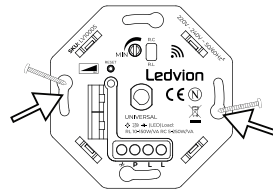
When all settings are finished, you can fit the dimmer in the wall. Cover the frame and the dimmer knob on the dimmer.

*If the dimmer is overloaded and gets too hot, the dimmer will start the protection function, so the dimmer will stop working. When you solve the issue, 5 minutes later push the rotary to reset the dimmer, dimmer will then work well again

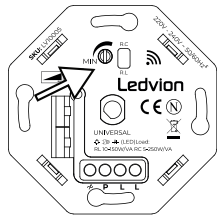
1



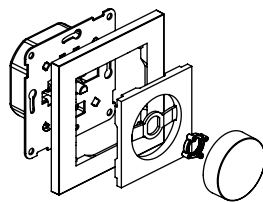
2



3



4



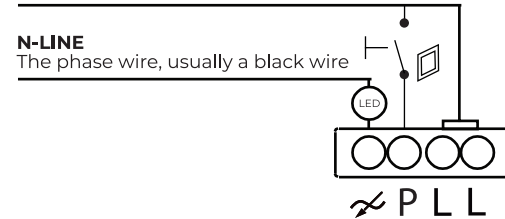
WIRING CONNECTION:

L-LINE

The phase wire, usually a brown wire

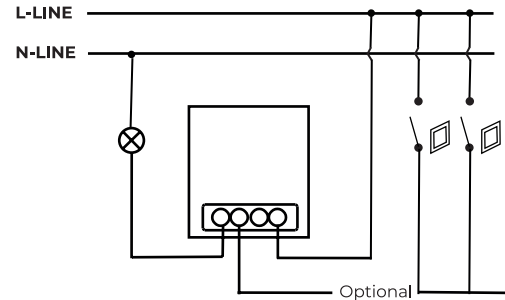
N-LINE

The phase wire, usually a black wire



L-LINE

N-LINE





MIN. BRIGHTNESS SETTING

To set the min. brightness to avoid flickering or satisfied min brightness:

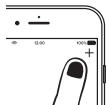
- Ensure the lamp module is switched ON
- Anti-clockwise the Knob
- Clockwise the VR - Variable Resister
- Anti-clockwise the VR to decrease the brightness at the min. & max. point.

Set up in 4 easy steps

Before you start write down your network name & password. Note: this item only works on a 2.4GHz Wifi network, not on a 5GHz Wifi network. Please consult your router manual for settings.

Download the Smartlife app from the Google Play store, the Apple Store or scan the QR code with your camera.

Open the app. If using for the first time follow the on-screen instructions to create your account. To add this device start by touching 'add device' (+) and follow the on-screen instructions.



Long pres the reset button until you see the indicator light start flashing quickly. Follow the on screen prompts to finish installation.

If you get the notification the product only works on 2.4GHz networks you should change the WiFi-frequency of your network to 2.4GHz only in the settings menu of your router.



This device is in compliance with EN 60669-2-1.



Should not be disposed with other household wastes.



This product is not a toy. Keep away from children and animals.



Do not expose this product to moisture, water or other liquids.



Do not attempt to examine or repair this product yourself.



This product is designed for indoor use only. Do not use outside!

