



Nadine



SIL



BLK



WHT

The **model Nadine** brings a breath of fresh air to the hospital! This trendy, closed shoe sits tight to the foot providing it with maximum protection. Not only being a comfortable and good looking work shoe the Oxygrip® slip resistant sole meets the highest industry standards. This model is totally adapted to the healthcare professionals.

The *Oxyfashion*-collection follows the newest trends and strictest safety standards, to get you a hip shoe with antistatic features and slip resistant sole. The lining is breathable Coolmax®. The upper is synthetic leather that can easily be cleaned with a damp cloth.



Nadine

CE-norm

CE EN 20347 certified.



Coolmax®-Lining

This is a technical breathable material.



Easy maintenance

The shoe can easily be cleaned with a damp cloth.



Exchangeable insole

Removable Coolmax® insole. Replace the insole on a regular base or use your own orthopedic soles.



Synthetic leather

The shoe's upper is durable, high end faux leather



Weight

The average weight of a shoe is 0.727 pound.



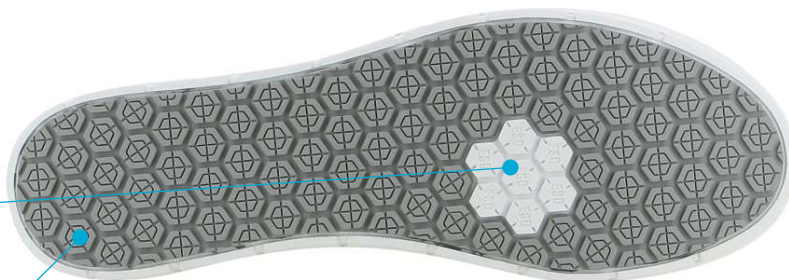
Anti-static ESD

The shoe features a plug that improves the dissipation of static electricity and meets the ESD-norm

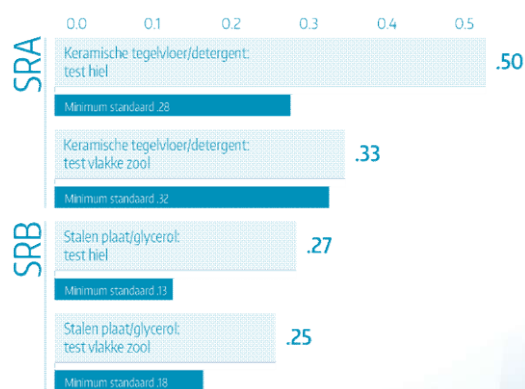


Slip resistant SRC

The rubber Oxygrip®-technology provides excellent grip, both on dry and wet floors, and complies with the SRC-norm.



Test results Oxygrip®-sole



Sizes

EU	35	36	37	38	39	40	41	42
UK	3	3.5	4	5	5.5	6.5	7	8
US	5,5	6	6.5	7.5	8	9	9.5	10.5

Usage

Suitable for those who Daily walk and stand for a long time.

Recommended for: Healthcare professionals
Nurses and caregivers
Wellness and beauty center professionals
Homecare

Do not use to accompany patients into the shower