



ML18 Mid-Bass Loudspeaker



APPLICATIONS

Mid-Bass Reinforcement
Drum Fill
12AM Bass Reinforcement

FEATURES

Compact Size
High Output
LF Device: 18 in. (457.2 mm)
Epoxy Mastic Finish
EP-4 Connectors
Integrated Transport Dolly

GENERAL DESCRIPTION

The Clair Brothers ML18 is an extremely efficient low frequency enclosure designed to provide maximum bass impact and low frequency augmentation in conjunction with two-way and three-way speaker systems. It is one of the most compact, high-output woofer cabinets on the market.

The design is a reflex enclosure that features an exceptionally large port which provides excellent coupling of low frequencies to the surrounding air. Compared to other compact designs, the ML18 maintains superior efficiency via increased SPL and increased linearity, yielding less distortion.

A high performance 18" woofer provides 98.5dB SPL for a 1-watt input measured at 1 meter, yet can withstand a punishing amount of program material. Its small size enables the box to be placed in permanent or portable applications without being obtrusive.

Cabinet construction utilizes the finest 18mm, 13-ply Baltic birch covered with a rugged epoxy

mastic finish. The transducer is protected with a flame and water-resistant modacrylic grille. The dolly board attaches to the front of the cabinet for additional protection and mobility. This combination of construction and materials ensures that the cabinet will survive the punishment that speaker systems are subjected to on the road and installations.

Clair Brothers combines amplification, and proprietary DSP processing in portable racks for all monitor systems. Custom cabling for systems is available as well and can be pre-wired, labeled and delivered in road cases.

OPTIONS & ACCESSORIES

Proprietary DSP + Amplification Rack Packages
Custom Colors Available

ML18 Mid-Bass Loudspeaker



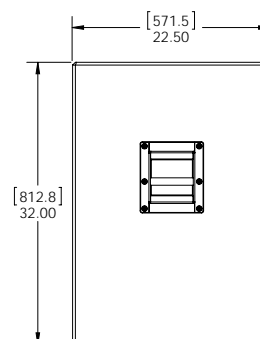
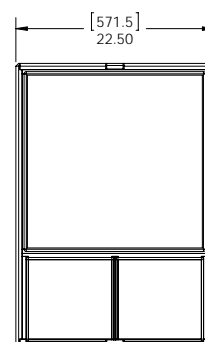
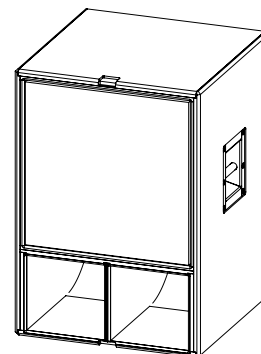
AUDIO SPECIFICATIONS

Loudspeaker Type	Single Driver Mid-Bass	
Frequency Response (+/- 2dB)	45Hz–250Hz	
Recommended Power Amplifier	2000–3500W @ 8 Ohms	
Sensitivity (1 Watt @ 1 Meter)	LF	98.5 dB SPL
Maximum Output	Cont.	128 dB SPL
	Peak	131 dB SPL
Drivers	LF	(1) 18 in. (457.2mm)
Nominal Impedance	LF	8 Ohms
Power Handling	Cont.	1000W
	Peak	2000W
Input Connection	(2) EP-4 Connectors (1 Male, 1 Female)	

MECHANICAL SPECIFICATIONS

Enclosure	Shell	18mm Baltic Birch
	Finish	Black Epoxy Mastic
Grille	Water/Flame-Resistant Modacrylic	
Dimensions	Height	32.00 in. (812.8mm)
	Width	22.50 in. (571.5mm)
	Depth	22.50 in. (571.5mm)
Weight (includes Dolly)	155 lbs. (70.3kg)	
Shipping Weight (includes Dolly)	174 lbs. (78.9kg)	

Note: All wattage figures are calculated using the rated nominal impedance.
Clair Brothers products are designed to perform optimally by utilizing factory recommended proprietary DSP settings.



ARCHITECT AND ENGINEERS SPECIFICATIONS

The loudspeaker shall be a low frequency system featuring a total of one 18" driver. The 18" driver is capable of handling 1000 watts continuous of pink noise with a 6 dB crest factor for 8 hours (as per EIA RS-426-A standard). The enclosure shall be constructed of 18mm, 13-ply Baltic birch and be covered with a black epoxy mastic. The woofer shall be protected by a water and flame resistant modacrylic grille. A four-caster dolly board shall be included. Dimensions shall be 32.0" high, 22.5" wide, and 22.5" deep. The system weight, including dolly board, shall total 155 lbs (70.3kg). The loudspeaker system shall be the Clair Brothers ML18.

ML18 EP-4 Pin Configuration

Pin	Use
1	Low (-)
2	Low (+)
3	Unused (-)
4	Unused (+)