

## How to use G-Red

About 5min in once / available daily

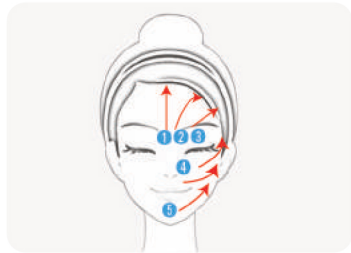
- **Ultrasonic massage, nutrition, pore contraction, improvement of elasticity.**

## Step 1

Press power button shortly 3 times at standby mode or press the button one more time at G-Blue mode. Then G-Red LED will be lighten up and operation will begin.

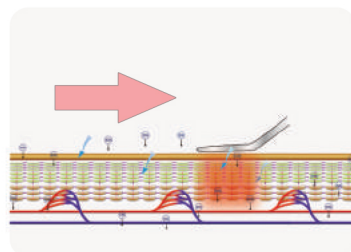
## Step 2

Apply cosmetics (nourishing cream or wrinkle care products) to the skin and use in direction of the picture.



## Step 3

After lightly contacting wide part of blade with the skin, Massage in same direction of picture. When touching hand electrode, functional Red LED will be lighten up + ion will be provided with light therapy process.



- ※ When inserting ion, you may feel stinging due to circulating current. However, it is harmless to human body.
- ※ Do not use in one area over time and keep it moving smoothly.

## Efficacy of Reclar

- 1. Water Peeling**  
When ultrasound is diffused in the water, shock wave is penetrated deeply into the skin where human hands or tools are not reached. It removes thoroughly impurities quickly from pore and the skin surface such as callus and sebum.
- 2. Galvanic**  
Negative and positive ions, generated in blade, penetrate cosmetic nutrients deeply into the skin with ultrasound massage. Pores are contracted with improvement of skin status as well as resilience.
- 3. Light Therapy**  
Blue light helps to improve skin trouble. Red light reduces free oxygen radicals and it is effective for anti-aging, skin damage by UV rays as well as wrinkle inhibition. It is also effective for wrinkle improvement and whitening.



- 4. Gold Therapy**  
We induces 99.9% of pure gold that is effective for blood circulation, whitening and toxic emission, to blade so that you can use effectively ultrasonic therapy, galvanic function and light therapy functions. (Gold version only)

※ Product efficacy varies from individuals.

- Model : RECLAR
- Weight : 90g
- Rated voltage : DC 5V
- battery : 3.7V / 600mAh (Li-Polymer)
- Charging time : 90 min • Using time : 30 min
- Size : 170 X 52 X 15.5 (mm)
- Material : ABS
- Country : Made in Korea
- Manufacturer : RNU Co., Ltd.
- Address : 58, Maeyeo-ro, Dong-gu, Daegu, Korea
- TEL : +82-80-854-0001



## Precautions

1. Keep it away from infants and young children.
2. Do not disassemble or modify the product.
3. **Stop using if your skin becomes irritated such as redness, itching or swelling during use.**
4. The galvanic currents may affect fetus, so we do not recommend the use of G-Blue or G-Red for pregnant women.
5. Charge it fully before the first use.
6. When using the galvanic function, never let your eyes be exposed to the functional LED for a long time.
7. **Caution! If you immerse the device in water or a large amount of water gets in the device, it may cause a malfunction.**
8. This device is not waterproof.

## Warranty regulations

1. It is subject to a one-year warranty from the date of purchase.
2. The warranty period starts from the date of purchase, so please keep your receipt. (If the date of purchase cannot be confirmed, the warranty period will be based on the date of manufacture.)
3. For the case of below details (provisions except for warranty object), the cost will be charged.
  - A. In case of breakage, caused by violation of included user's manual.
  - B. In the case of failure due to external factors such as shock and dismantling of the equipment.
  - C. In the case of failure due to natural disasters.
  - D. In case of running out of consumable parts.

\* For repairs and exchange within the warranty period of the product, this product may be compensated in accordance with compensation criteria for consumers' damages, notified by Ministry of Finance and Economy.

## User's Guide



RECLAR

## Components and parts

## Component



Body



USB cable (for charging)

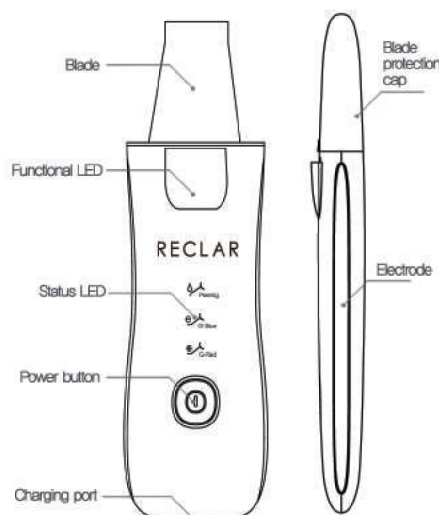


User's manual



Waterproof pouch

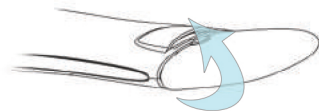
## Name of parts and display screen



## How to Reclar

## 1. Open protective cap

As shown in the picture, lift lightly tip of blade protective cap. Then protective cap will be easily separated.



## 2. Turn on the power

Press longer the power button (about 2 second) while the power is turned off. Starting alarm will be turned on and the power will be turned on. This state is standby mode and state LED will be consecutively flashed.



## 3. Power off

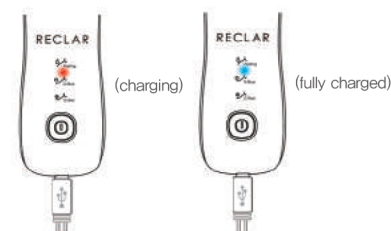
Press the power button while operating or at the standby mode (about 2 second), ending alarm will be turned on and the power will be turned off

## 4. Automatic turn off

After 5 minutes during peeling, G-Blue, G-Red, the device will be automatically transferred into standby mode. After 5 minutes in standby mode without motion, the device will be automatically turned off.

## 5. Charging

Connect micro USB charger to the charging jack on the bottom of device. Once charging starts, red LED comes, the blue LED will be turned on when charging is completed.



※ The product cannot be used while charging.

## How to use Peeling

About 5min in once / 3~4 times per week

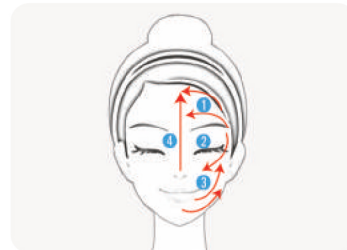
- **Removal of callus, sebum and impurities. Skin purification**

## Step 1

Removal of callus, sebum and impurities. Skin purification Press power button shortly at standby mode. Peeling LED will be lighten up and operation will be started.

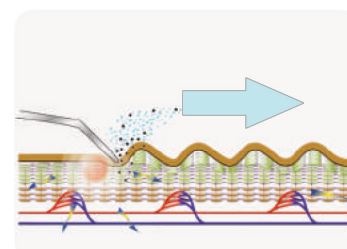
## Step 2

After cleansing and face wash, use the product while the water is still remained on the skin. If there is no sufficient moisture on your skin, use after applying a thin layer of water on your face. If there is much moisture on the blade, it may become less effective. Thus, use after removing the moisture.



## Step 3

After lightly placing the end tip of blade on your skin, move it slowly as if you gently scrape off the moisture in the direction as shown in the illustration.



- ※ After peeling, skin shall become dry. Thus, it is better to use moisture essence or mask pack.
- ※ Do not use in one area over time and keep it moving smoothly

## How to use G-Blue

About 5min in once / available daily

- **Ultrasonic massage, nutrition, skin trouble and help inflammation relief.**

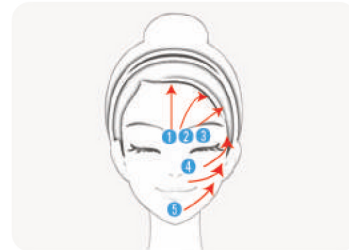
## Step 1

Press power button shortly 2 times and press one more time during peeling mode operation. Then G Blue LED will be lighten up and operation will start.

## Step 2

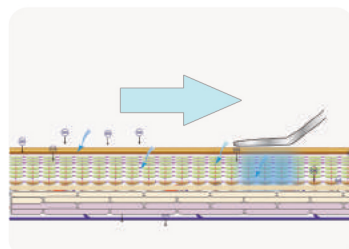
Coat cosmetics (ampoule or essence) on skin and use according to the direction of picture.

※ G-Blue mode is effective in absorbing vitamins and you can use with mask pack.



## Step 3

After contacting lightly wide part of blade and massage in same direction of the picture. Once the hand contacts with hand electrode, functiona LED will be lighten up. Ion supply and light therapy will be conducted.



- ※ When inserting ion, you may feel stinging due to circulating current. However, it is harmless to human body.
- ※ Do not use in one area over time and keep it moving smoothly