



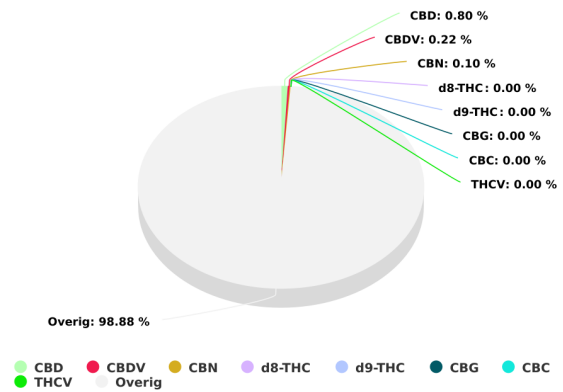
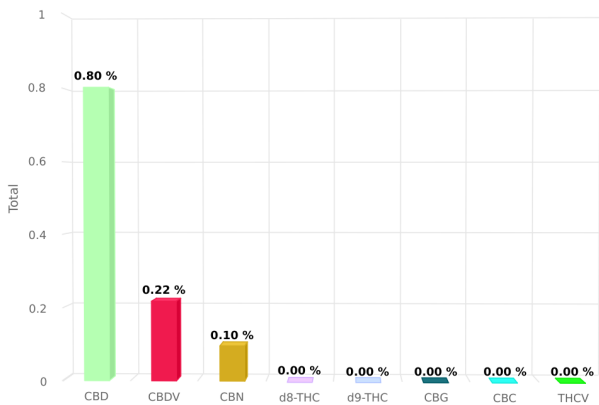
NOVA RESEARCH
BIOTECHNOLOGY



Sample name: Canoil CBD E-liquid O.G. Kush
100 mg CBD
Sample Type: Overige
Batchnr: 2019-03
SampleID: #174258
Analyze date: 2019-03-09
Expiration date: 2019-06-09

Tested for:
Nova Research
Canoil

CERTIFICATE OF ANALYSIS



Total THC and CBD is defined as the total potential of all Δ9 THC and CBD in the product, assuming 100% decarboxylation.

CANNABINOIDS ANALYSIS

CBD	0.802 %	d8-THC	0.000 %
d9-THC	0.000 %	CBG	0.000 %
CBN	0.099 %	CBC	0.000 %
CBDV	0.219 %	THCV	0.000 %

This product has been Quality Control tested by Nova Research B.V. Values reported relate only to the product tested. This Certificate shall not be reproduced except in full, without the written approval of Nova Research B.V. For more information visit the website: <https://novaresearch.nl>

Signature:
S Cassini



NOVA RESEARCH
BIOTECHNOLOGY



Sample name: Canoil CBD E-liquid O.G. Kush
100 mg CBD
Sample Type: Overige
Batchnr: 2019-03
SampleID: #174258
Analyze date: 2019-03-09
Expiration date: 2019-06-09

Tested for:
Nova Research
Canoil

CERTIFICATE OF ANALYSIS

TERPENES ANALYSIS

alpha-Pinene	0.016 %	Camphene	0.000 %
beta-Pinene	0.055 %	Myrcene	0.034 %
delta-3-Carene	0.000 %	Limonene	0.312 %
Eucalyptol	0.000 %	Linalool	0.000 %
Borneol	0.000 %	Terpineol	0.000 %
beta-Caryophyllene	0.317 %	Humulene	0.040 %
alpha-Bisabolol	0.000 %		

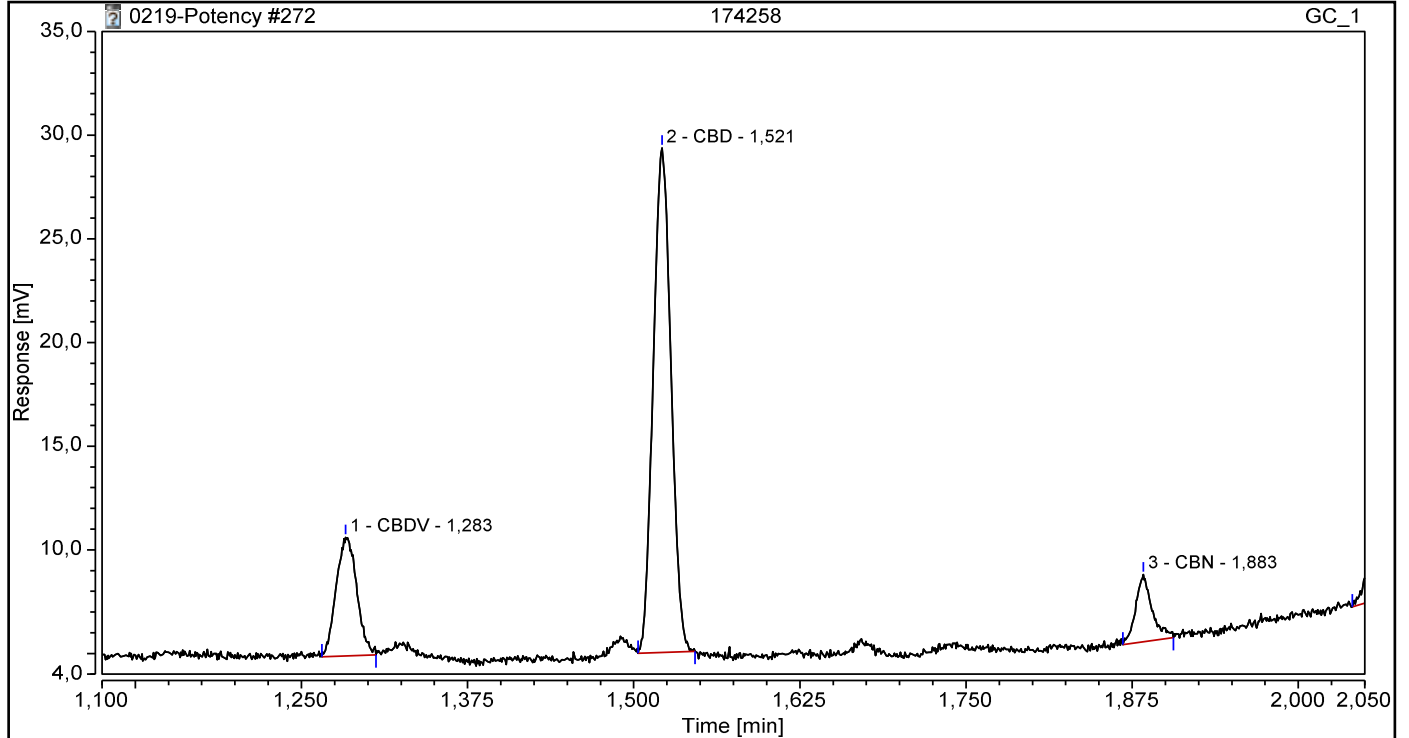
This product has been Quality Control tested by Nova Research B.V. Values reported relate only to the product tested. This Certificate shall not be reproduced except in full, without the written approval of Nova Research B.V. For more information visit the website: <https://novaresearch.nl>

Signature:

Chromatogram and Results

Injection Details			
Injection Name:	174258	Run Time (min):	5,10
Vial Number:	52	Injection Volume:	1,00
Injection Type:	Unknown	Channel:	GC_1
Calibration Level:		Wavelength:	n.a.
Instrument Method:	cannabis potency	Bandwidth:	n.a.
Processing Method:	Potency	Dilution Factor:	1,0000
Injection Date/Time:	08-mrt-19 15:42	Sample Weight:	1,0000

Chromatogram

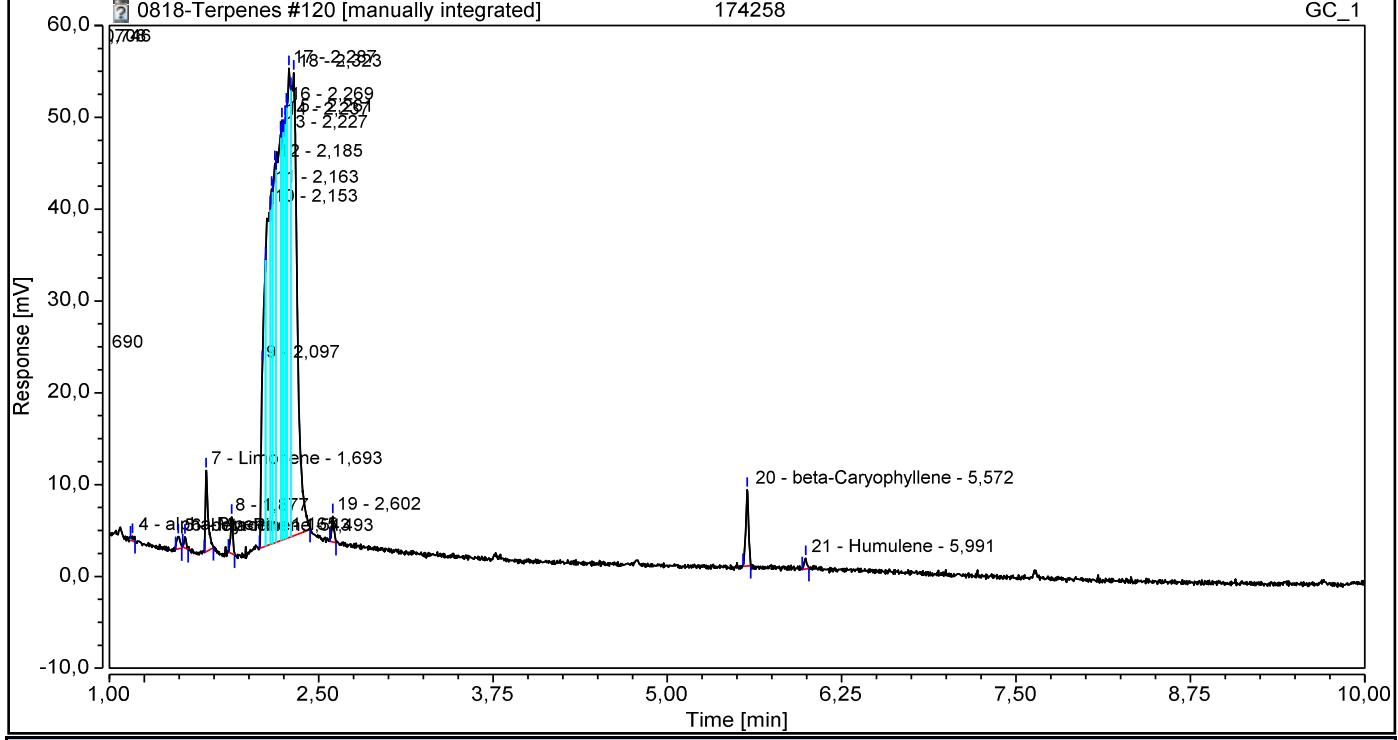


Integration Results							
No.	Peak Name	Retention Time min	Area mV*min	Height mV	Relative Area %	Relative Height %	Amount
1	CBDV	1,283	0,1031	5,724	18,46	16,13	0,219%
2	CBD	1,521	0,3777	24,324	67,64	68,54	0,802%
3	CBN	1,883	0,0465	3,240	8,32	9,13	0,099%
Total:			0,527	33,288	94,42	93,81	

Chromatogram and Results

Injection Details			
Injection Name:	174258	Run Time (min):	14,80
Vial Number:	52	Injection Volume:	1,00
Injection Type:	Unknown	Channel:	GC_1
Calibration Level:		Wavelength:	n.a.
Instrument Method:	terpenes 2017-10-30a	Bandwidth:	n.a.
Processing Method:	Terpenes 2017-11-07	Dilution Factor:	1,0000
Injection Date/Time:	08-mrt-19 13:49	Sample Weight:	1,0000

Chromatogram



Integration Results

No.	Peak Name	Retention Time min	Area mV*min	Height mV	Relative Area %	Relative Height %	Amount %
1		0,690	0,178	13,449	0,74	0,84	n.a.
2		0,708	0,770	53,535	3,18	3,35	n.a.
3		0,746	11,669	1081,022	48,20	67,68	n.a.
4	alpha-Pinene	1,165	0,010	0,515	0,04	0,03	0,016%
n.a.	Camphene	n.a.	n.a.	n.a.	n.a.	n.a.	n.a.
5	beta-Pinene	1,493	0,034	1,327	0,14	0,08	0,055%
6	Myrcene	1,543	0,021	1,217	0,09	0,08	0,034%
n.a.	delta-3-Carene	n.a.	n.a.	n.a.	n.a.	n.a.	n.a.
7	Limonene	1,693	0,193	8,822	0,80	0,55	0,312%
8		1,877	0,077	4,007	0,32	0,25	n.a.
n.a.	Eucalyptol	n.a.	n.a.	n.a.	n.a.	n.a.	n.a.
9		2,097	0,781	20,001	3,23	1,25	n.a.
10		2,153	1,240	36,671	5,12	2,30	n.a.
11		2,163	0,609	38,664	2,51	2,42	n.a.
12		2,185	0,995	41,328	4,11	2,59	n.a.
13		2,227	1,449	44,313	5,98	2,77	n.a.
14		2,237	0,692	45,710	2,86	2,86	n.a.
15		2,261	0,751	45,850	3,10	2,87	n.a.
16		2,269	0,525	47,100	2,17	2,95	n.a.
17		2,287	1,307	51,076	5,40	3,20	n.a.
18		2,323	2,633	50,405	10,87	3,16	n.a.
19		2,602					
20	beta-Caryophyllene	5,572					
21	Humulene	5,991					

19		2,602	0,055	2,794	0,23	0,17	n.a.
n.a.	Linalool	n.a.	n.a.	n.a.	n.a.	n.a.	n.a.
n.a.	Borneol	n.a.	n.a.	n.a.	n.a.	n.a.	n.a.
n.a.	Terpineol	n.a.	n.a.	n.a.	n.a.	n.a.	n.a.
20	beta-Caryophyllene	5,572	0,197	8,279	0,81	0,52	0,317%
21	Humulene	5,991	0,025	1,161	0,10	0,07	0,040%
n.a.	alpha-Bisabolol	n.a.	n.a.	n.a.	n.a.	n.a.	n.a.
Total:			24,211	1597,247	100,00	100,00	