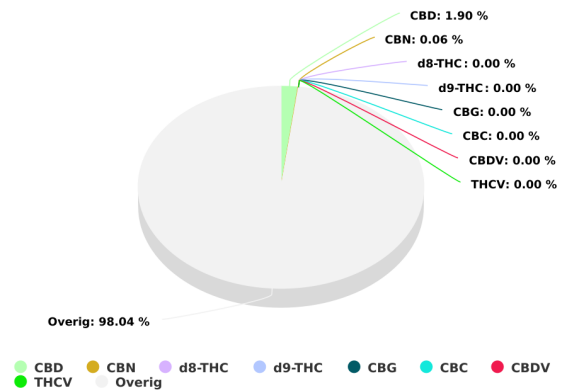
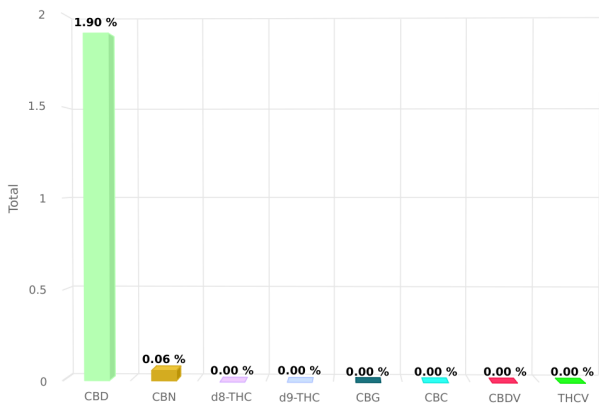




Sample name: Canoil CBD E-liquid Lemon Haze 200 mg CBD
Sample Type: Overige
Batchnr: 2019-03
SampleID: #174259
Analyze date: 2019-03-09
Expiration date: 2019-06-09

Tested for:
Nova Research
Canoil

CERTIFICATE OF ANALYSIS



Total THC and CBD is defined as the total potential of all Δ9 THC and CBD in the product, assuming 100% decarboxylation.

CANNABINOIDS ANALYSIS

CBD	1.900 %	d8-THC	0.000 %
d9-THC	0.000 %	CBG	0.000 %
CBN	0.062 %	CBC	0.000 %
CBDV	0.000 %	THCv	0.000 %

This product has been Quality Control tested by Nova Research B.V. Values reported relate only to the product tested. This Certificate shall not be reproduced except in full, without the written approval of Nova Research B.V. For more information visit the website: <https://novaresearch.nl>

Signature:
S Cassini



NOVA RESEARCH
BIOTECHNOLOGY



Sample name: Canoil CBD E-liquid Lemon Haze 200 mg CBD
Sample Type: Overige
Batchnr: 2019-03
SampleID: #174259
Analyze date: 2019-03-09
Expiration date: 2019-06-09

Tested for:
Nova Research
Canoil

CERTIFICATE OF ANALYSIS

TERPENES ANALYSIS

alpha-Pinene	0.000 %	Camphene	0.000 %
beta-Pinene	0.030 %	Myrcene	0.019 %
delta-3-Carene	0.000 %	Limonene	0.288 %
Eucalyptol	0.000 %	Linalool	0.000 %
Borneol	0.041 %	Terpineol	0.000 %
beta-Caryophyllene	0.178 %	Humulene	0.007 %
alpha-Bisabolol	0.000 %		

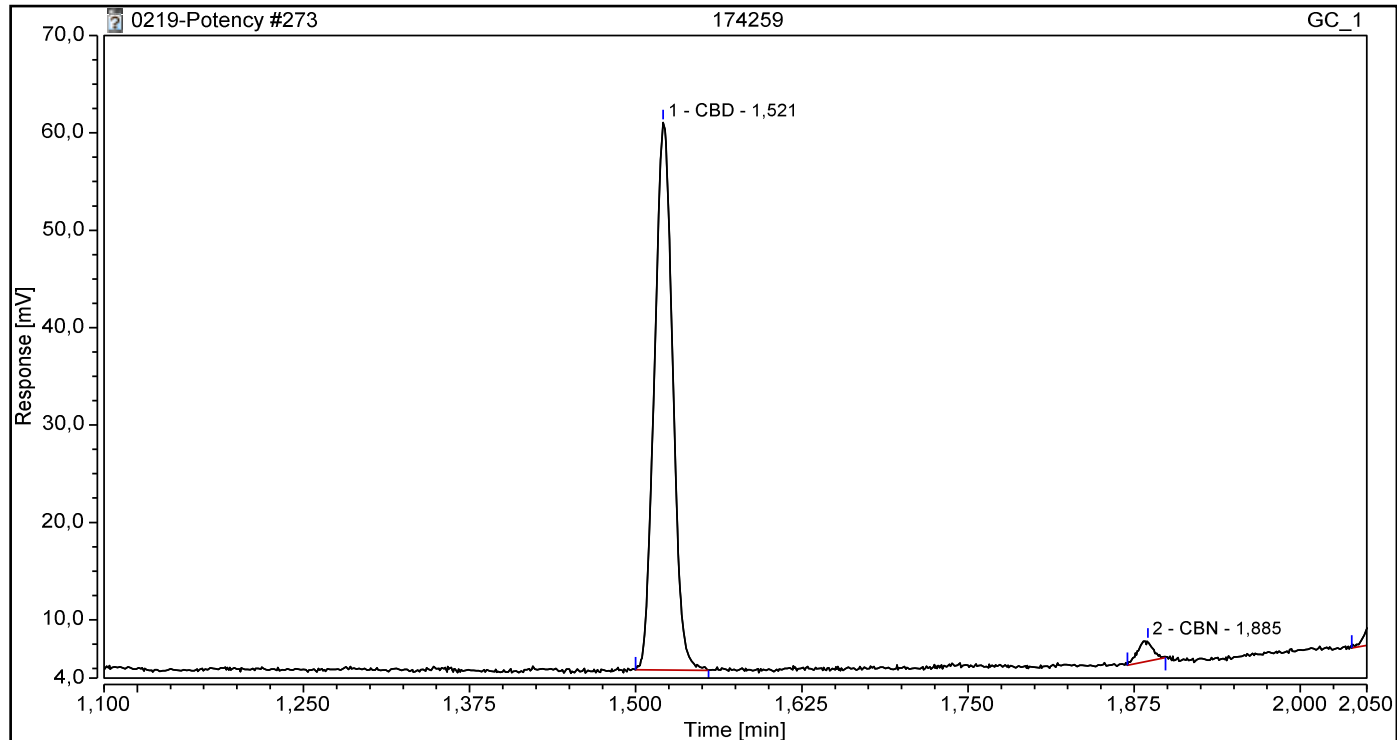
This product has been Quality Control tested by Nova Research B.V. Values reported relate only to the product tested. This Certificate shall not be reproduced except in full, without the written approval of Nova Research B.V. For more information visit the website: <https://novaresearch.nl>

Signature:

Chromatogram and Results

Injection Details			
Injection Name:	174259	Run Time (min):	5,10
Vial Number:	53	Injection Volume:	1,00
Injection Type:	Unknown	Channel:	GC_1
Calibration Level:		Wavelength:	n.a.
Instrument Method:	cannabis potency	Bandwidth:	n.a.
Processing Method:	Potency	Dilution Factor:	1,0000
Injection Date/Time:	08-mrt-19 15:50	Sample Weight:	1,0000

Chromatogram

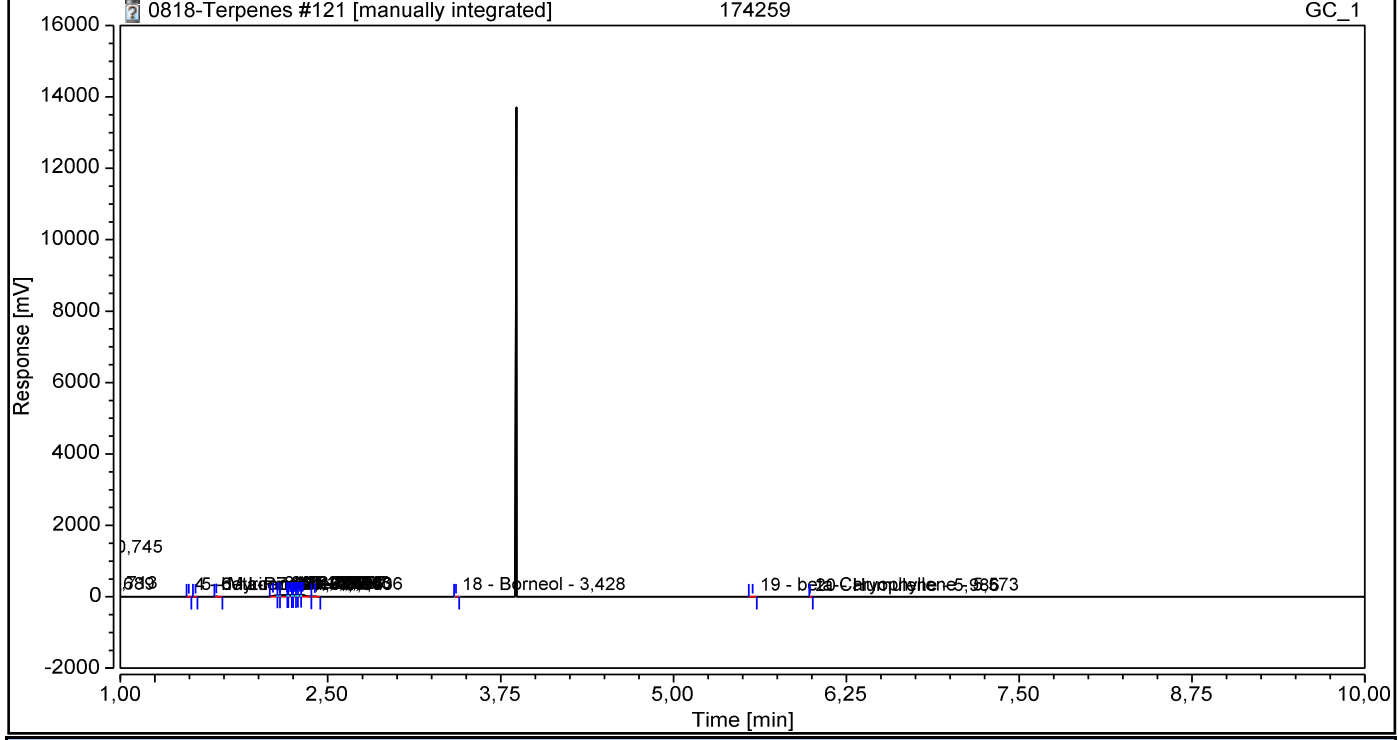


Integration Results							
No.	Peak Name	Retention Time min	Area mV*min	Height mV	Relative Area %	Relative Height %	Amount
1	CBD	1,521	0,8949	56,203	92,79	91,88	1,900%
2	CBN	1,885	0,0290	2,081	3,01	3,40	0,062%
Total:			0,924	58,284	95,79	95,28	

Chromatogram and Results

Injection Details			
Injection Name:	174259	Run Time (min):	14,80
Vial Number:	53	Injection Volume:	1,00
Injection Type:	Unknown	Channel:	GC_1
Calibration Level:		Wavelength:	n.a.
Instrument Method:	terpenes 2017-10-30a	Bandwidth:	n.a.
Processing Method:	Terpenes 2017-11-07	Dilution Factor:	1,0000
Injection Date/Time:	08-mrt-19 14:10	Sample Weight:	1,0000

Chromatogram



Integration Results							
No.	Peak Name	Retention Time min	Area mV*min	Height mV	Relative Area %	Relative Height %	Amount %
1		0,689	0,191	14,056	0,81	0,89	n.a.
2		0,713	0,709	50,932	3,01	3,23	n.a.
3		0,745	11,313	1048,678	48,05	66,52	n.a.
n.a.	alpha-Pinene	n.a.	n.a.	n.a.	n.a.	n.a.	n.a.
n.a.	Camphene	n.a.	n.a.	n.a.	n.a.	n.a.	n.a.
4	beta-Pinene	1,494	0,019	0,986	0,08	0,06	0,030%
5	Myrcene	1,544	0,012	0,742	0,05	0,05	0,019%
n.a.	delta-3-Carene	n.a.	n.a.	n.a.	n.a.	n.a.	n.a.
6	Limonene	1,693	0,179	8,783	0,76	0,56	0,288%
n.a.	Eucalyptol	n.a.	n.a.	n.a.	n.a.	n.a.	n.a.
7		2,102	1,309	24,466	5,56	1,55	n.a.
8		2,155	0,694	36,716	2,95	2,33	n.a.
9		2,206	2,069	41,235	8,79	2,62	n.a.
10		2,211	0,336	42,652	1,43	2,71	n.a.
11		2,229	1,152	45,529	4,89	2,89	n.a.
12		2,244	0,417	45,167	1,77	2,87	n.a.
13		2,263	0,880	46,417	3,74	2,94	n.a.
14		2,277	0,637	48,724	2,70	3,09	n.a.
15		2,297	1,159	50,974	4,92	3,23	n.a.
16		2,318	1,977	50,340	8,40	3,19	n.a.
17		2,406	0,349	13,844	1,48	0,88	n.a.

n.a.	Linalool	n.a.	n.a.	n.a.	n.a.	n.a.	n.a.
18	Borneol	3,428	0,025	1,257	0,11	0,08	0,041%
n.a.	Terpineol	n.a.	n.a.	n.a.	n.a.	n.a.	n.a.
19	beta-Caryophyllene	5,573	0,111	4,551	0,47	0,29	0,178%
20	Humulene	5,986	0,004	0,396	0,02	0,03	0,007%
n.a.	alpha-Bisabolol	n.a.	n.a.	n.a.	n.a.	n.a.	n.a.
Total:			23,543	1576,445	100,00	100,00	