



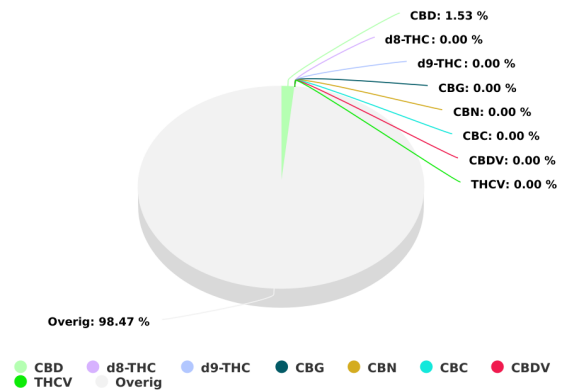
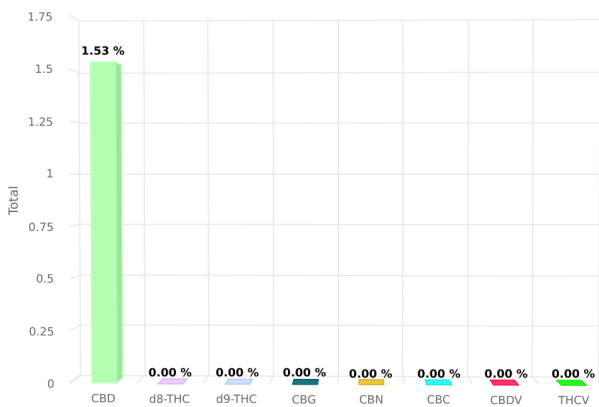
NOVA RESEARCH
BIOTECHNOLOGY



Sample name: Canoil CBD E-liquid O.G. Kush
200 mg CBD
Sample Type: Overige
Batchnr: 2019-03
SampleID: #174256
Analyze date: 2019-03-09
Expiration date: 2019-06-09

Tested for:
Nova Research
Canoil

CERTIFICATE OF ANALYSIS



Total THC and CBD is defined as the total potential of all Δ9 THC and CBD in the product, assuming 100% decarboxylation.

CANNABINOIDS ANALYSIS

CBD	1.533 %	d8-THC	0.000 %
d9-THC	0.000 %	CBG	0.000 %
CBN	0.000 %	CBC	0.000 %
CBDV	0.000 %	THCV	0.000 %

This product has been Quality Control tested by Nova Research B.V. Values reported relate only to the product tested. This Certificate shall not be reproduced except in full, without the written approval of Nova Research B.V. For more information visit the website: <https://novaresearch.nl>

Signature:
S Cassini



NOVA RESEARCH
BIOTECHNOLOGY



Sample name: Canoil CBD E-liquid O.G. Kush
200 mg CBD
Sample Type: Overige
Batchnr: 2019-03
SampleID: #174256
Analyze date: 2019-03-09
Expiration date: 2019-06-09

Tested for:
Nova Research
Canoil

CERTIFICATE OF ANALYSIS

TERPENES ANALYSIS

alpha-Pinene	0.019 %	Camphene	0.000 %
beta-Pinene	0.076 %	Myrcene	0.037 %
delta-3-Carene	0.000 %	Limonene	0.273 %
Eucalyptol	0.000 %	Linalool	0.010 %
Borneol	0.000 %	Terpineol	0.000 %
beta-Caryophyllene	0.324 %	Humulene	0.043 %
alpha-Bisabolol	0.000 %		

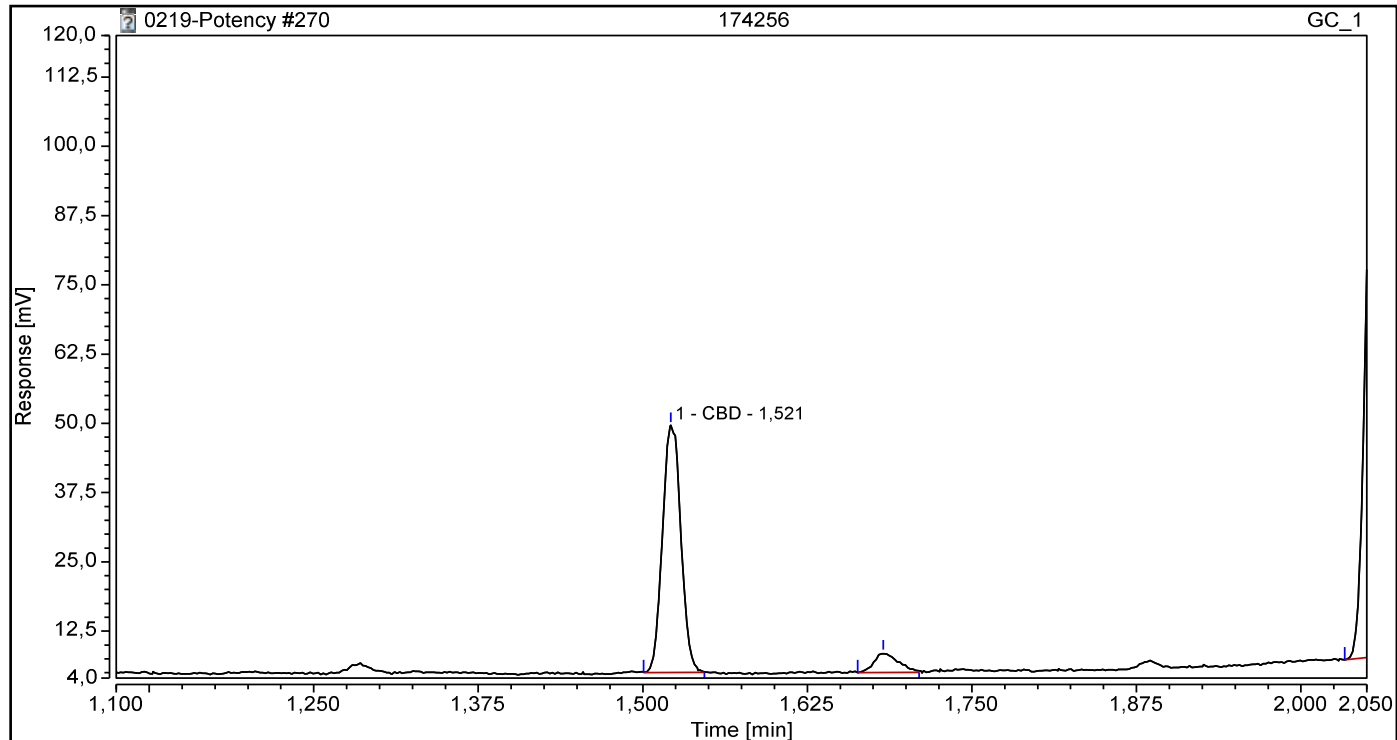
This product has been Quality Control tested by Nova Research B.V. Values reported relate only to the product tested. This Certificate shall not be reproduced except in full, without the written approval of Nova Research B.V. For more information visit the website: <https://novaresearch.nl>

Signature:

Chromatogram and Results

Injection Details			
Injection Name:	174256	Run Time (min):	5,10
Vial Number:	50	Injection Volume:	1,00
Injection Type:	Unknown	Channel:	GC_1
Calibration Level:		Wavelength:	n.a.
Instrument Method:	cannabis potency	Bandwidth:	n.a.
Processing Method:	Potency	Dilution Factor:	1,0000
Injection Date/Time:	08-mrt-19 15:24	Sample Weight:	1,0000

Chromatogram

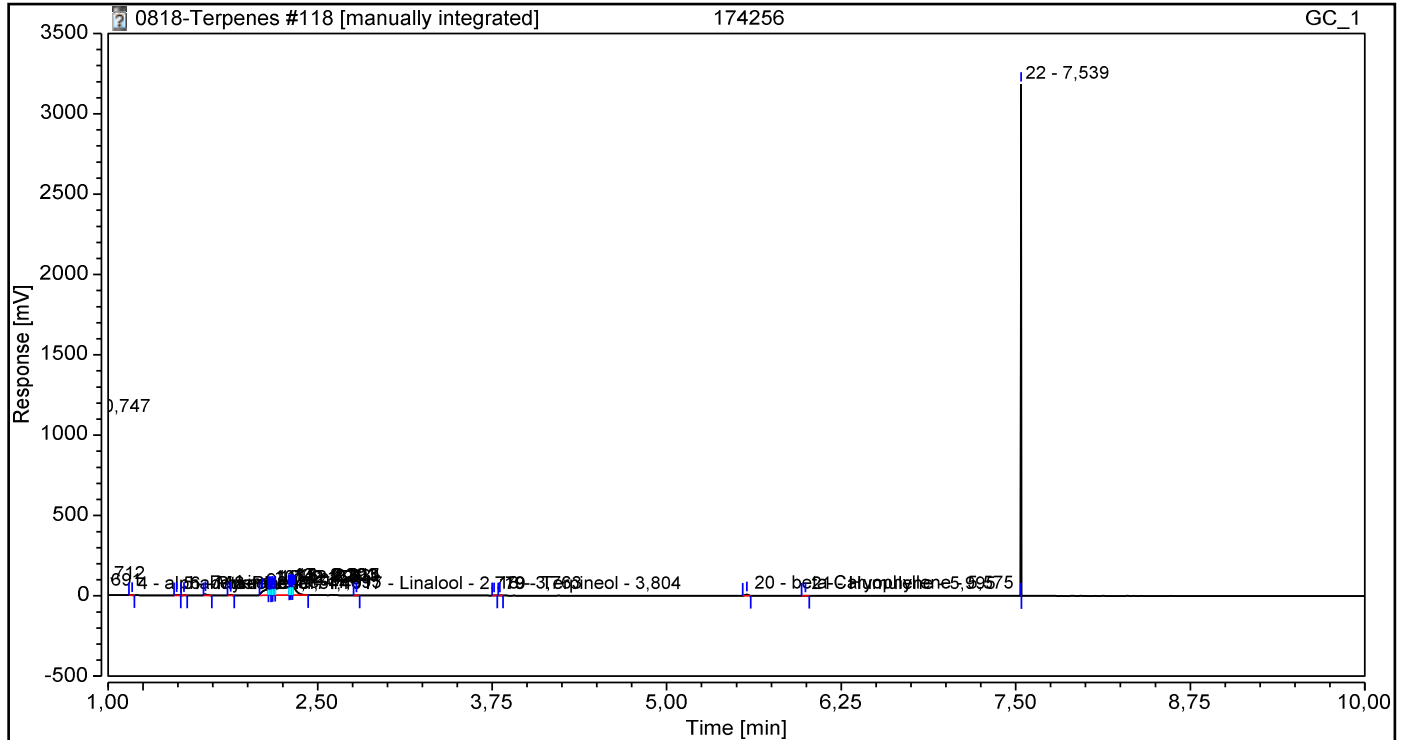


Integration Results							
No.	Peak Name	Retention Time min	Area mV*min	Height mV	Relative Area %	Relative Height %	Amount
1	CBD	1,521	0,7219	44,585	31,73	29,58	1,533%
Total:			0,722	44,585	31,73	29,58	

Chromatogram and Results

Injection Details			
Injection Name:	174256	Run Time (min):	14,80
Vial Number:	50	Injection Volume:	1,00
Injection Type:	Unknown	Channel:	GC_1
Calibration Level:		Wavelength:	n.a.
Instrument Method:	terpenes 2017-10-30a	Bandwidth:	n.a.
Processing Method:	Terpenes 2017-11-07	Dilution Factor:	1,0000
Injection Date/Time:	08-mrt-19 13:08	Sample Weight:	1,0000

Chromatogram



Integration Results

No.	Peak Name	Retention Time min	Area mV*min	Height mV	Relative Area %	Relative Height %	Amount %
1		0,691	0,188	14,133	0,71	0,30	n.a.
2		0,712	0,753	54,689	2,86	1,16	n.a.
3		0,747	11,630	1096,730	44,16	23,28	n.a.
4	alpha-Pinene	1,171	0,011	0,578	0,04	0,01	0,019%
n.a.	Camphene	n.a.	n.a.	n.a.	n.a.	n.a.	n.a.
5	beta-Pinene	1,491	0,047	1,534	0,18	0,03	0,076%
6	Myrcene	1,544	0,023	1,108	0,09	0,02	0,037%
n.a.	delta-3-Carene	n.a.	n.a.	n.a.	n.a.	n.a.	n.a.
7	Limonene	1,695	0,170	8,325	0,64	0,18	0,273%
8		1,878	0,088	4,460	0,33	0,09	n.a.
n.a.	Eucalyptol	n.a.	n.a.	n.a.	n.a.	n.a.	n.a.
9		2,103	1,658	24,617	6,29	0,52	n.a.
10		2,157	0,673	38,133	2,56	0,81	n.a.
11		2,175	0,487	39,270	1,85	0,83	n.a.
12		2,196	0,723	40,736	2,74	0,86	n.a.
13		2,291	4,547	48,996	17,26	1,04	n.a.
14		2,303	0,562	50,093	2,13	1,06	n.a.
15		2,315	0,571	50,953	2,17	1,08	n.a.
16		2,331	1,645	45,429	6,24	0,96	n.a.
17	Linalool	2,779	0,006	0,327	0,02	0,01	0,010%
n.a.	Borneol	n.a.	n.a.	n.a.	n.a.	n.a.	n.a.

18		3,763	0,007	0,648	0,03	0,01	n.a.
19	Terpineol	3,804	0,000	0,218	0,00	0,00	0,000%
20	beta-Caryophyllene	5,575	0,201	8,290	0,76	0,18	0,324%
21	Humulene	5,995	0,026	1,086	0,10	0,02	0,043%
22		7,539	2,321	3181,206	8,81	67,52	n.a.
n.a.	alpha-Bisabolol	n.a.	n.a.	n.a.	n.a.	n.a.	n.a.
Total:			26,337	4711,561	100,00	100,00	