



NOVA RESEARCH
BIOTECHNOLOGY



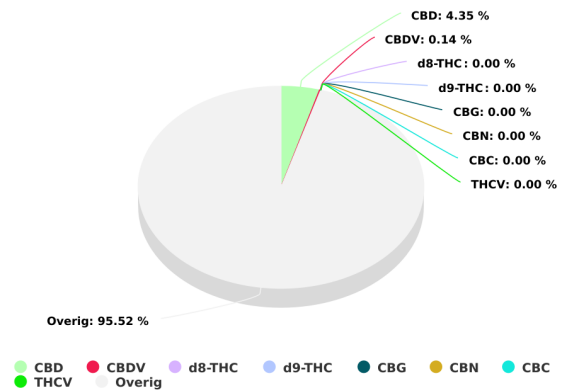
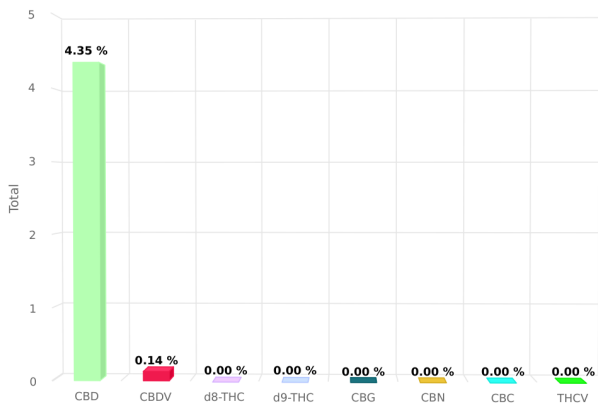
Sample name: Canoil CBD Olie 5%
Sample Type: Hennepzaadolie Full Spectrum
Batchnr: CBD oil
SampleID: 2019-03
 #174252

Analyze date: 2019-03-09
Expiration date: 2019-06-09



Tested for:
 Nova Research
 Canoil

CERTIFICATE OF ANALYSIS



Total THC and CBD is defined as the total potential of all Δ9 THC and CBD in the product, assuming 100% decarboxylation.

CANNABINOIDS ANALYSIS

CBD	4.347 %	d8-THC	0.000 %
d9-THC	0.000 %	CBG	0.000 %
CBN	0.000 %	CBC	0.000 %
CBDV	0.136 %	THCV	0.000 %

This product has been Quality Control tested by Nova Research B.V. Values reported relate only to the product tested. This Certificate shall not be reproduced except in full, without the written approval of Nova Research B.V. For more information visit the website: <https://novaresearch.nl>

Signature:



NOVA RESEARCH
BIOTECHNOLOGY



HEMPSEED OIL



Sample name: Canoil CBD Olie 5%
Hennepzaadolie Full Spectrum
Sample Type: CBD oil
Batchnr: 2019-03
SampleID: #174252

Analyze date: 2019-03-09
Expiration date: 2019-06-09

Tested for:
Nova Research
Canoil

CERTIFICATE OF ANALYSIS

TERPENES ANALYSIS

alpha-Pinene	0.000 %	Camphene	0.000 %
beta-Pinene	0.116 %	Myrcene	0.000 %
delta-3-Carene	0.000 %	Limonene	0.272 %
Eucalyptol	0.000 %	Linalool	0.000 %
Borneol	0.000 %	Terpineol	0.000 %
beta-Caryophyllene	0.028 %	Humulene	0.000 %
alpha-Bisabolol	0.023 %		

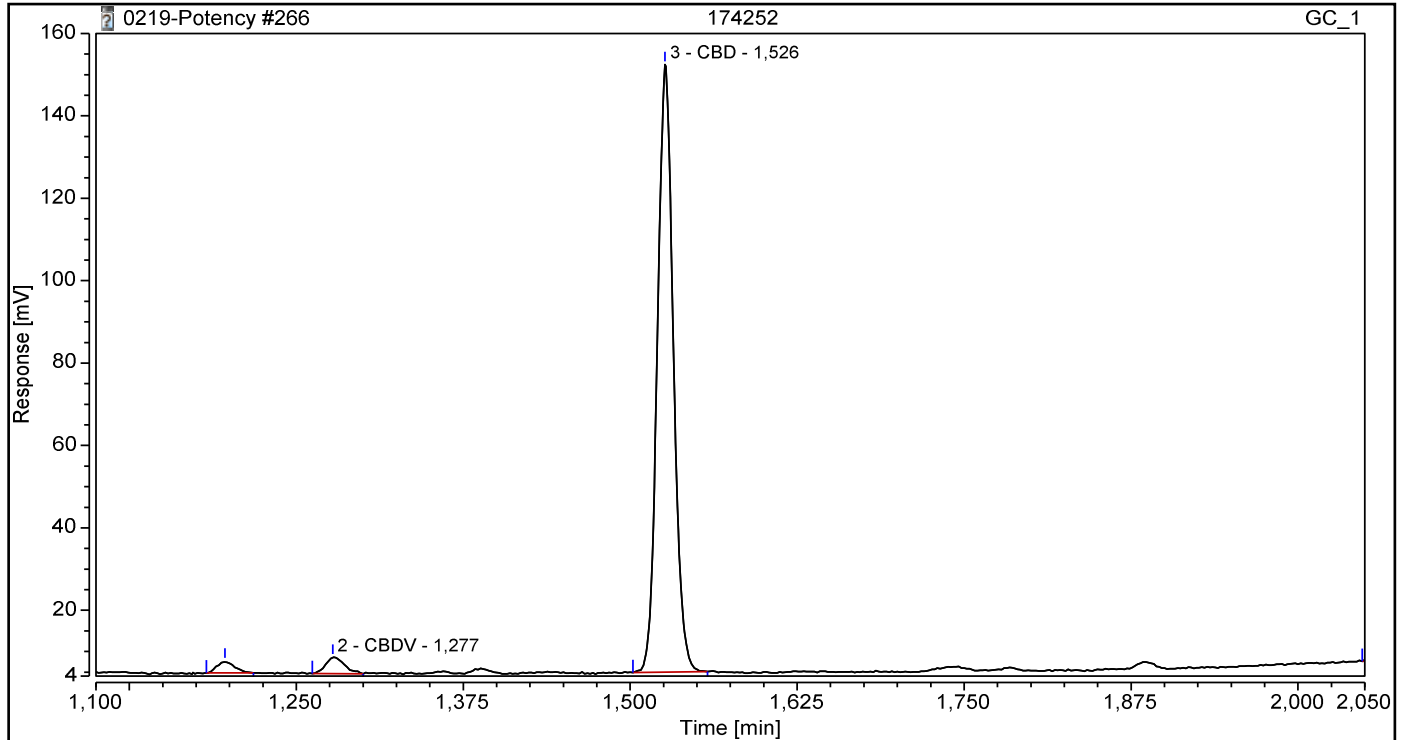
This product has been Quality Control tested by Nova Research B.V. Values reported relate only to the product tested. This Certificate shall not be reproduced except in full, without the written approval of Nova Research B.V. For more information visit the website: <https://novaresearch.nl>

Signature:

Chromatogram and Results

Injection Details		
Injection Name:	174252	Run Time (min): 5,10
Vial Number:	46	Injection Volume: 1,00
Injection Type:	Unknown	Channel: GC_1
Calibration Level:		Wavelength: n.a.
Instrument Method:	cannabis potency	Bandwidth: n.a.
Processing Method:	Potency	Dilution Factor: 1,0000
Injection Date/Time:	08-mrt-19 14:49	Sample Weight: 1,0000

Chromatogram



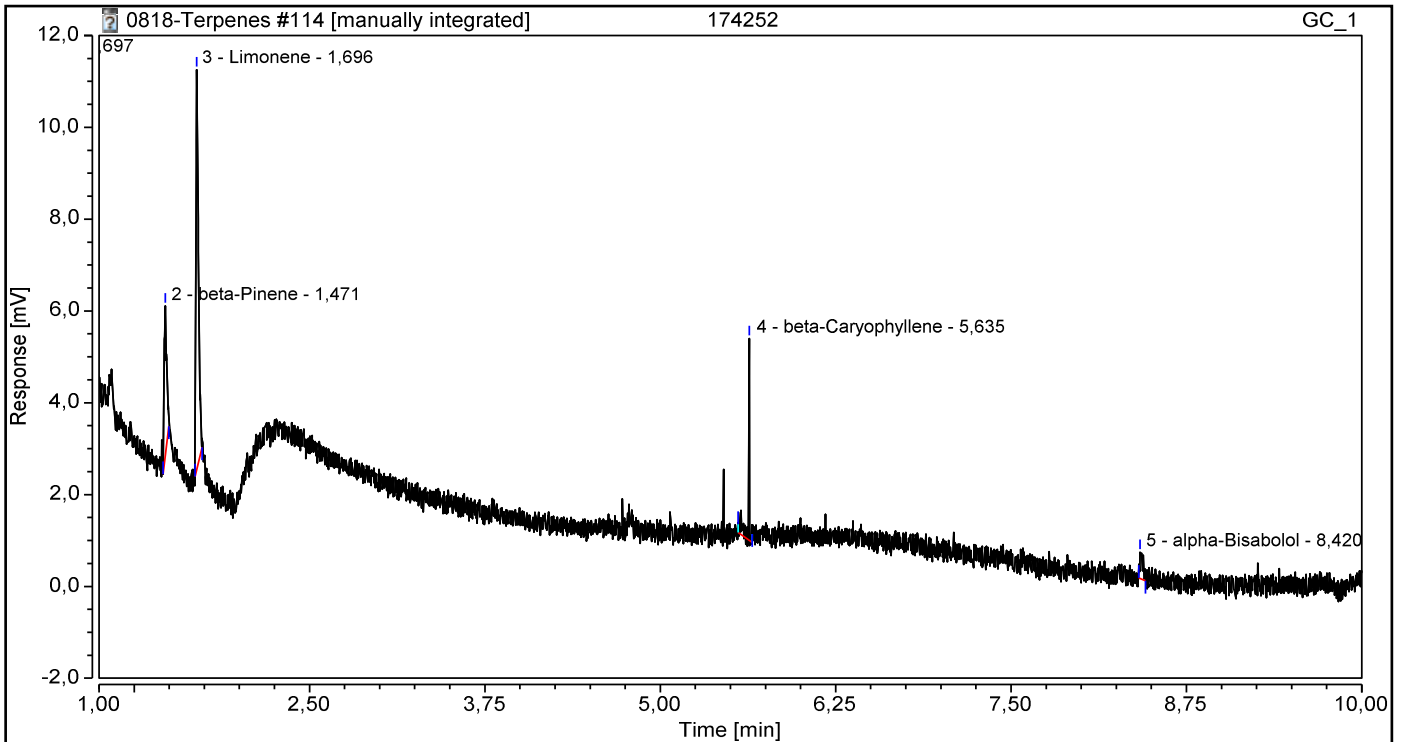
Integration Results							
No.	Peak Name	Retention Time min	Area mV*min	Height mV	Relative Area %	Relative Height %	Amount
2	CBDV	1,277	0,0640	4,001	2,93	2,55	0,136%
3	CBD	1,526	2,0469	147,485	93,84	94,13	4,347%
Total:			2,111	151,486	96,78	96,69	

Chromatogram and Results

Injection Details

Injection Name:	174252	Run Time (min):	14,80
Vial Number:	46	Injection Volume:	1,00
Injection Type:	Unknown	Channel:	GC_1
Calibration Level:		Wavelength:	n.a.
Instrument Method:	terpenes 2017-10-30a	Bandwidth:	n.a.
Processing Method:	Terpenes 2017-11-07	Dilution Factor:	1,0000
Injection Date/Time:	08-mrt-19 11:45	Sample Weight:	1,0000

Chromatogram



Integration Results

No.	Peak Name	Retention Time min	Area mV*min	Height mV	Relative Area %	Relative Height %	Amount %
1	alpha-Pinene	0,697	0,192	14,890	41,36	46,75	n.a.
n.a.	Camphene	n.a.	n.a.	n.a.	n.a.	n.a.	n.a.
2	beta-Pinene	1,471	0,072	3,283	15,44	10,31	0,116%
n.a.	Myrcene	n.a.	n.a.	n.a.	n.a.	n.a.	n.a.
n.a.	delta-3-Carene	n.a.	n.a.	n.a.	n.a.	n.a.	n.a.
3	Limonene	1,696	0,169	8,712	36,38	27,35	0,272%
n.a.	Eucalyptol	n.a.	n.a.	n.a.	n.a.	n.a.	n.a.
n.a.	Linalool	n.a.	n.a.	n.a.	n.a.	n.a.	n.a.
n.a.	Borneol	n.a.	n.a.	n.a.	n.a.	n.a.	n.a.
n.a.	Terpineol	n.a.	n.a.	n.a.	n.a.	n.a.	n.a.
4	beta-Caryophyllene	5,635	0,017	4,397	3,72	13,80	0,028%
n.a.	Humulene	n.a.	n.a.	n.a.	n.a.	n.a.	n.a.
5	alpha-Bisabolol	8,420	0,014	0,570	3,09	1,79	0,023%
Total:			0,464	31,852	100,00	100,00	