



**NOVA RESEARCH**  
BIOTECHNOLOGY

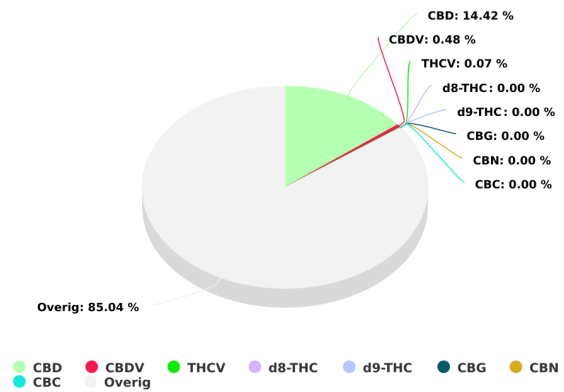
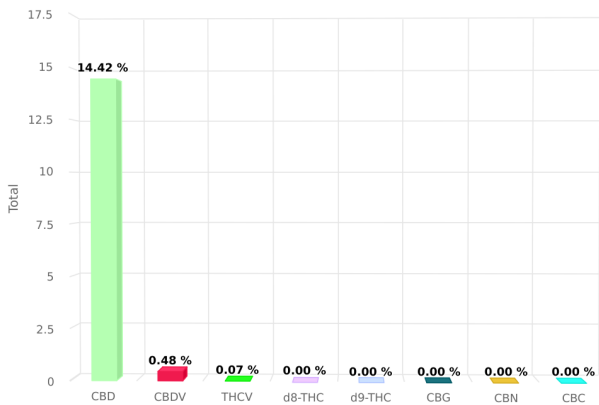


**Sample name:** Canoil CBD Olie 15%  
**Sample Type:** Henneszaadolie Full Spectrum  
**Batchnr:** CBD oil  
**SampleID:** 2019-03  
 #174254  
**Analyze date:** 2019-03-09  
**Expiration date:** 2019-06-09



**Tested for:**  
 Nova Research  
 Canoil

### CERTIFICATE OF ANALYSIS



Total THC and CBD is defined as the total potential of all Δ9 THC and CBD in the product, assuming 100% decarboxylation.

### CANNABINOIDS ANALYSIS

<b>CBD</b>	14.419 %	<b>d8-THC</b>	0.000 %
<b>d9-THC</b>	0.000 %	<b>CBG</b>	0.000 %
<b>CBN</b>	0.000 %	<b>CBC</b>	0.000 %
<b>CBDV</b>	0.475 %	<b>THCV</b>	0.070 %

This product has been Quality Control tested by Nova Research B.V. Values reported relate only to the product tested. This Certificate shall not be reproduced except in full, without the written approval of Nova Research B.V. For more information visit the website: <https://novaresearch.nl>

Signature:



**NOVA RESEARCH**  
BIOTECHNOLOGY



HEMPSEED OIL



**Sample name:** Canoil CBD Olie 15%  
Hennepzaadolie Full Spectrum  
**Sample Type:** CBD oil  
**Batchnr:** 2019-03  
**SampleID:** #174254

**Analyze date:** 2019-03-09  
**Expiration date:** 2019-06-09

**Tested for:**  
Nova Research  
Canoil

## CERTIFICATE OF ANALYSIS

### TERPENES ANALYSIS

<b>alpha-Pinene</b>	0.000 %	<b>Camphene</b>	0.000 %
<b>beta-Pinene</b>	0.061 %	<b>Myrcene</b>	0.000 %
<b>delta-3-Carene</b>	0.000 %	<b>Limonene</b>	0.299 %
<b>Eucalyptol</b>	0.000 %	<b>Linalool</b>	0.000 %
<b>Borneol</b>	0.000 %	<b>Terpineol</b>	0.000 %
<b>beta-Caryophyllene</b>	0.081 %	<b>Humulene</b>	0.034 %
<b>alpha-Bisabolol</b>	0.132 %		

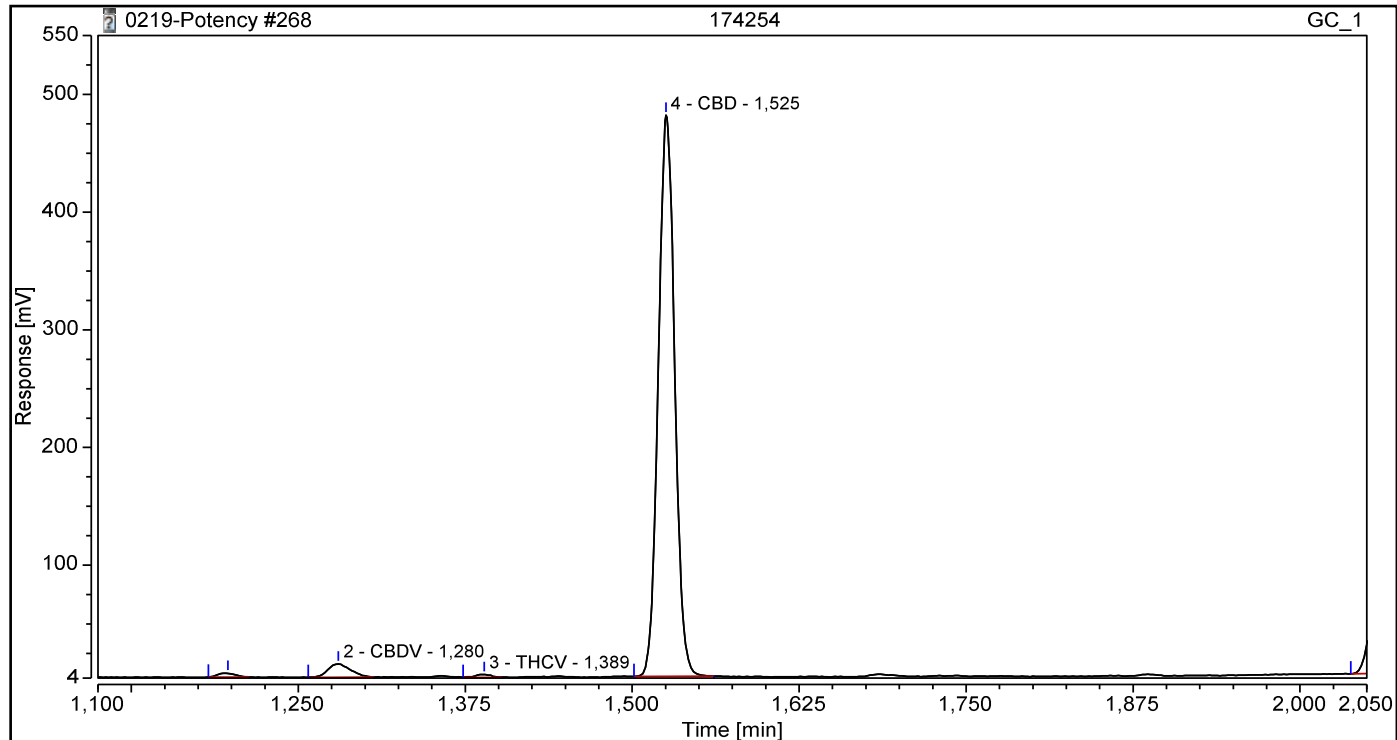
This product has been Quality Control tested by Nova Research B.V. Values reported relate only to the product tested. This Certificate shall not be reproduced except in full, without the written approval of Nova Research B.V. For more information visit the website: <https://novaresearch.nl>

Signature:

## Chromatogram and Results

Injection Details			
Injection Name:	174254	Run Time (min):	5,10
Vial Number:	48	Injection Volume:	1,00
Injection Type:	Unknown	Channel:	GC_1
Calibration Level:		Wavelength:	n.a.
Instrument Method:	cannabis potency	Bandwidth:	n.a.
Processing Method:	Potency	Dilution Factor:	1,0000
Injection Date/Time:	08-mrt-19 15:07	Sample Weight:	1,0000

### Chromatogram

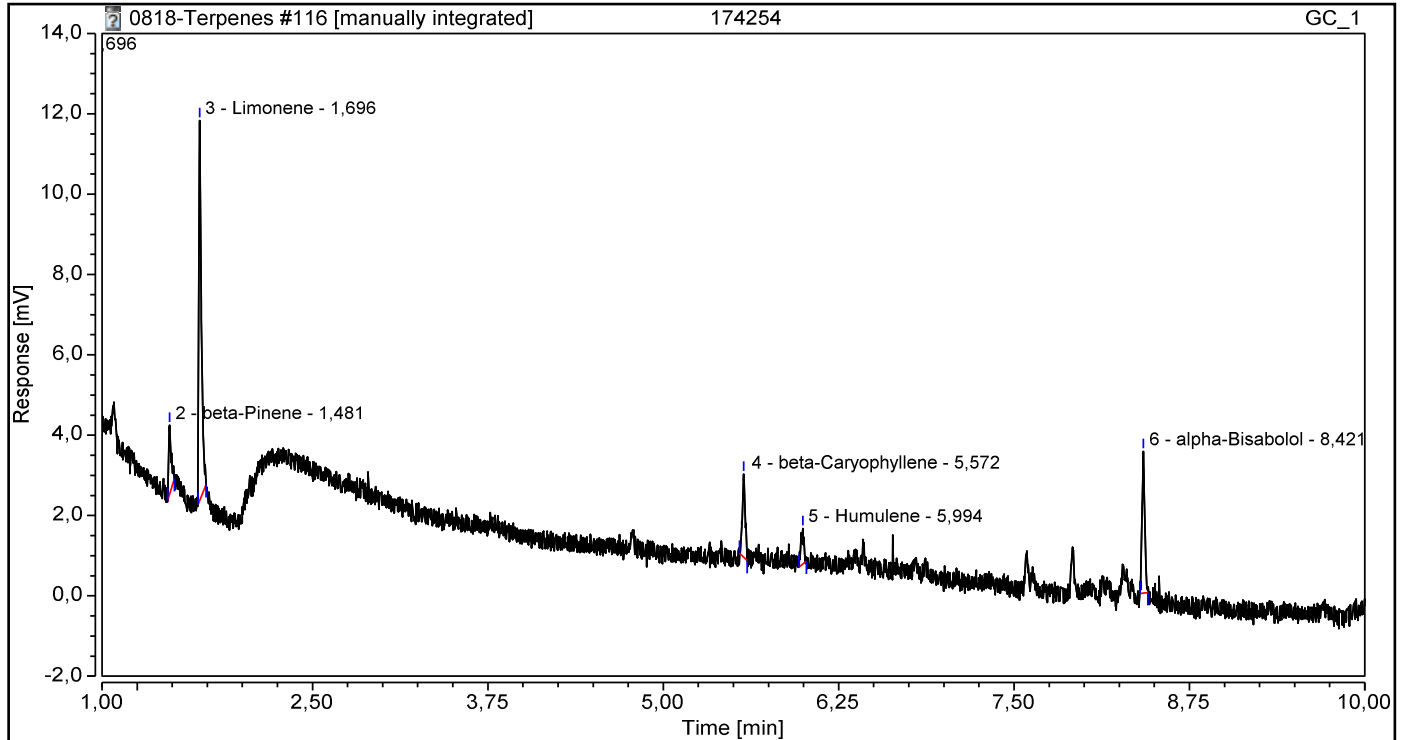


Integration Results							
No.	Peak Name	Retention Time min	Area mV*min	Height mV	Relative Area %	Relative Height %	Amount
2	CBDV	1,280	0,2237	11,291	2,83	2,06	0,475%
3	THCV	1,389	0,0331	2,469	0,42	0,45	0,070%
4	CBD	1,525	6,7900	476,733	86,01	86,83	14,419%
Total:			7,047	490,493	89,26	89,34	

## Chromatogram and Results

Injection Details			
Injection Name:	174254	Run Time (min):	14,80
Vial Number:	48	Injection Volume:	1,00
Injection Type:	Unknown	Channel:	GC_1
Calibration Level:		Wavelength:	n.a.
Instrument Method:	terpenes 2017-10-30a	Bandwidth:	n.a.
Processing Method:	Terpenes 2017-11-07	Dilution Factor:	1,0000
Injection Date/Time:	08-mrt-19 12:26	Sample Weight:	1,0000

### Chromatogram



Integration Results							
No.	Peak Name	Retention Time min	Area mV*min	Height mV	Relative Area %	Relative Height %	Amount %
1	alpha-Pinene	0,696	0,196	15,065	34,28	46,03	n.a.
n.a.	Camphene	n.a.	n.a.	n.a.	n.a.	n.a.	n.a.
2	beta-Pinene	1,481	0,038	1,735	6,61	5,30	0,061%
n.a.	Myrcene	n.a.	n.a.	n.a.	n.a.	n.a.	n.a.
n.a.	delta-3-Carene	n.a.	n.a.	n.a.	n.a.	n.a.	n.a.
3	Limonene	1,696	0,185	9,451	32,35	28,88	0,299%
n.a.	Eucalyptol	n.a.	n.a.	n.a.	n.a.	n.a.	n.a.
n.a.	Linalool	n.a.	n.a.	n.a.	n.a.	n.a.	n.a.
n.a.	Borneol	n.a.	n.a.	n.a.	n.a.	n.a.	n.a.
n.a.	Terpineol	n.a.	n.a.	n.a.	n.a.	n.a.	n.a.
4	beta-Caryophyllene	5,572	0,050	2,063	8,77	6,30	0,081%
5	Humulene	5,994	0,021	0,887	3,65	2,71	0,034%
6	alpha-Bisabolol	8,421	0,082	3,528	14,34	10,78	0,132%
<b>Total:</b>			<b>0,573</b>	<b>32,730</b>	<b>100,00</b>	<b>100,00</b>	