



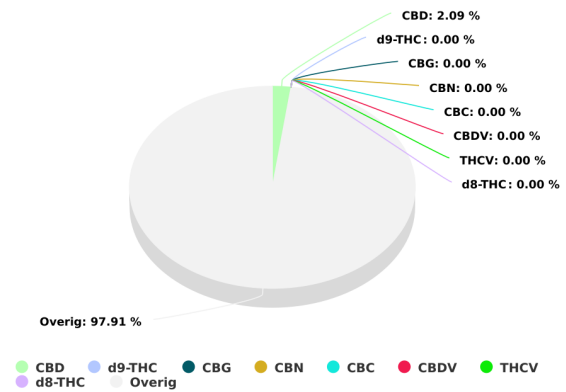
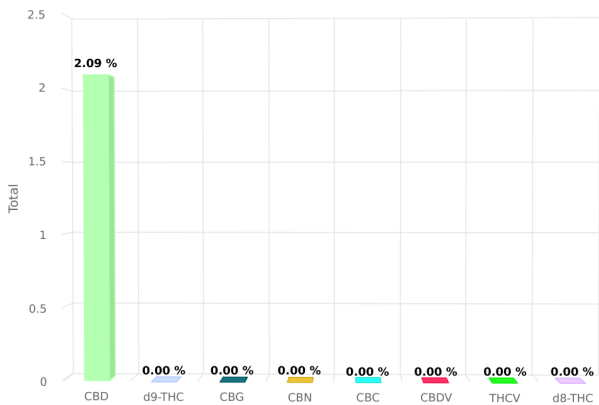
NOVA RESEARCH
BIOTECHNOLOGY



Sample name: Canoil CBD Olie 2,5%
Sample Type: Hennepzaadolie Full Spectrum
Batchnr: CBD oil
SampleID: 2019-03
 #174251
Analyze date: 2019-03-12
Expiration date: 2019-06-12

Tested for:
 Nova Research
 Canoil

CERTIFICATE OF ANALYSIS



Total THC and CBD is defined as the total potential of all Δ9 THC and CBD in the product, assuming 100% decarboxylation.

CANNABINOIDS ANALYSIS

CBD	2.092 %	d8-THC	0.000 %
d9-THC	0.000 %	CBG	0.000 %
CBN	0.000 %	CBC	0.000 %
CBDV	0.000 %	THCV	0.000 %

This product has been Quality Control tested by Nova Research B.V. Values reported relate only to the product tested. This Certificate shall not be reproduced except in full, without the written approval of Nova Research B.V. For more information visit the website: <https://novaresearch.nl>

Signature:



NOVA RESEARCH
BIOTECHNOLOGY



HEMPSEED OIL



Tested for:
Nova Research
Canoil

Sample name: Canoil CBD Olie 2,5%
Hennepzaadolie Full Spectrum
Sample Type: CBD oil
Batchnr: 2019-03
SampleID: #174251
Analyze date: 2019-03-12
Expiration date: 2019-06-12

CERTIFICATE OF ANALYSIS

TERPENES ANALYSIS

alpha-Pinene	0.009 %	Camphene	0.000 %
beta-Pinene	0.283 %	Myrcene	0.000 %
delta-3-Carene	0.000 %	Limonene	0.274 %
Eucalyptol	0.000 %	Linalool	0.000 %
Borneol	0.000 %	Terpineol	0.012 %
beta-Caryophyllene	0.000 %	Humulene	0.000 %
alpha-Bisabolol	0.012 %		

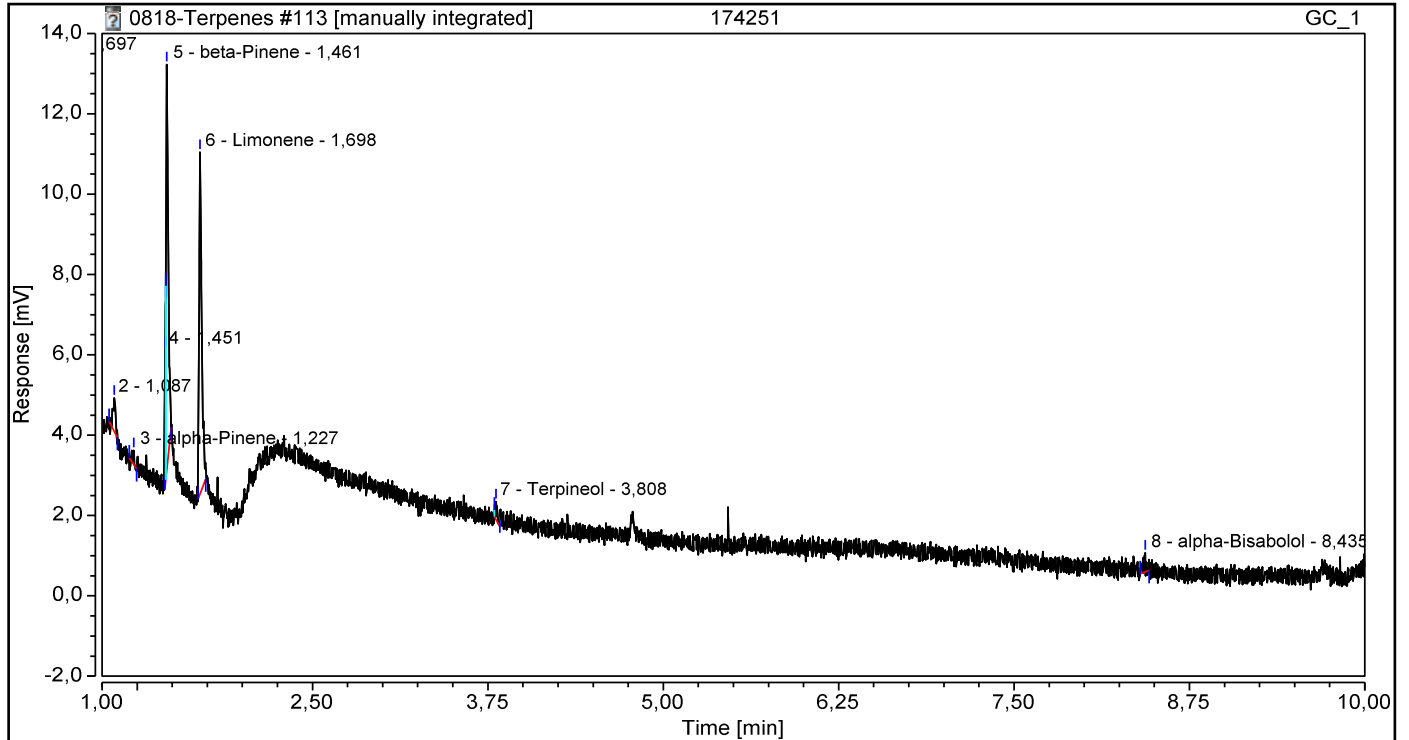
This product has been Quality Control tested by Nova Research B.V. Values reported relate only to the product tested. This Certificate shall not be reproduced except in full, without the written approval of Nova Research B.V. For more information visit the website: <https://novaresearch.nl>

Signature:

Chromatogram and Results

Injection Details			
Injection Name:	174251	Run Time (min):	14,80
Vial Number:	45	Injection Volume:	1,00
Injection Type:	Unknown	Channel:	GC_1
Calibration Level:		Wavelength:	n.a.
Instrument Method:	terpenes 2017-10-30a	Bandwidth:	n.a.
Processing Method:	Terpenes 2017-11-07	Dilution Factor:	1,0000
Injection Date/Time:	08-mrt-19 11:24	Sample Weight:	1,0000

Chromatogram



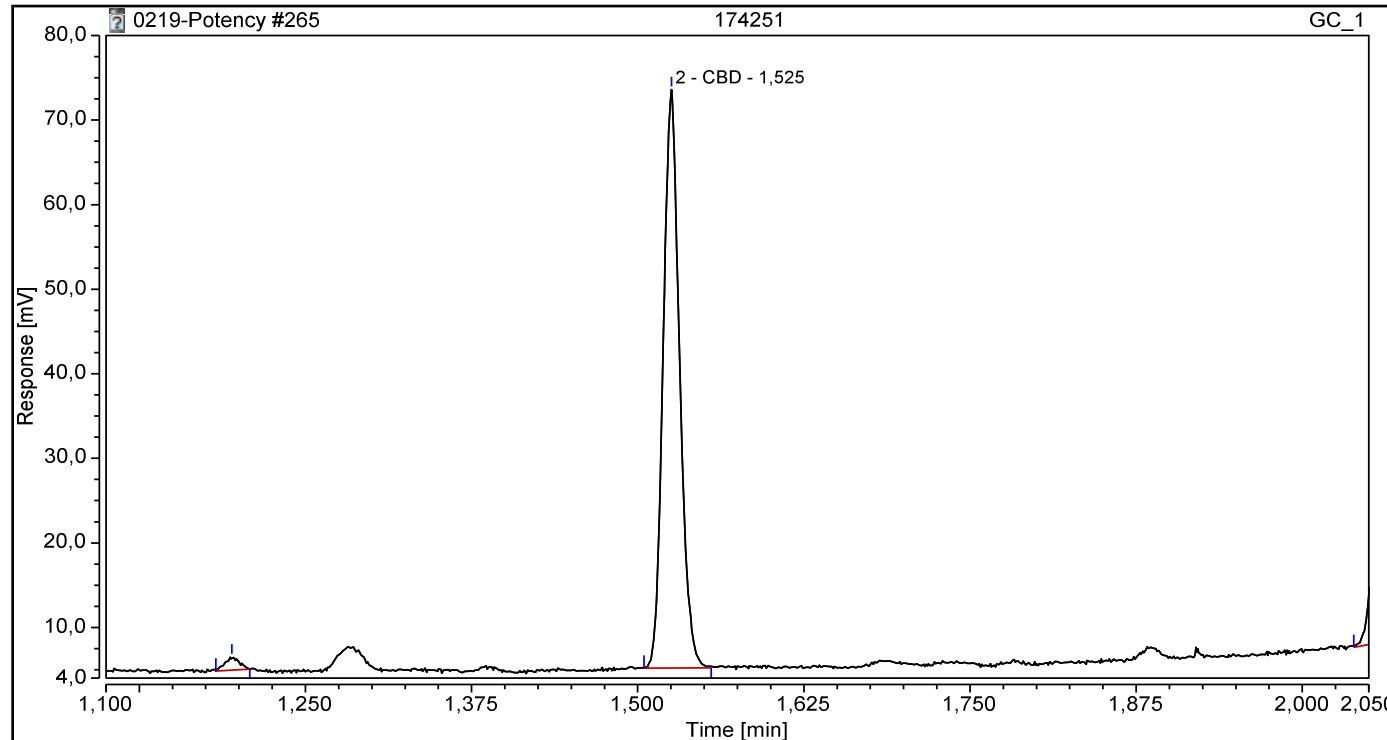
Integration Results

No.	Peak Name	Retention Time min	Area mV*min	Height mV	Relative Area %	Relative Height %	Amount %
1		0,697	0,200	15,521	33,39	39,22	n.a.
2		1,087	0,014	0,830	2,37	2,10	n.a.
3	alpha-Pinene	1,227	0,006	0,359	0,98	0,91	0,009%
n.a.	Camphene	n.a.	n.a.	n.a.	n.a.	n.a.	n.a.
4		1,451	0,018	3,335	3,02	8,43	n.a.
5	beta-Pinene	1,461	0,175	10,099	29,29	25,52	0,283%
n.a.	Myrcene	n.a.	n.a.	n.a.	n.a.	n.a.	n.a.
n.a.	delta-3-Carene	n.a.	n.a.	n.a.	n.a.	n.a.	n.a.
6	Limonene	1,698	0,170	8,515	28,44	21,51	0,274%
n.a.	Eucalyptol	n.a.	n.a.	n.a.	n.a.	n.a.	n.a.
n.a.	Linalool	n.a.	n.a.	n.a.	n.a.	n.a.	n.a.
n.a.	Borneol	n.a.	n.a.	n.a.	n.a.	n.a.	n.a.
7	Terpineol	3,808	0,008	0,450	1,29	1,14	0,012%
n.a.	beta-Caryophyllene	n.a.	n.a.	n.a.	n.a.	n.a.	n.a.
n.a.	Humulene	n.a.	n.a.	n.a.	n.a.	n.a.	n.a.
8	alpha-Bisabolol	8,435	0,007	0,469	1,21	1,18	0,012%
Total:			0,598	39,577	100,00	100,00	

Chromatogram and Results

Injection Details			
Injection Name:	174251	Run Time (min):	5,10
Vial Number:	45	Injection Volume:	1,00
Injection Type:	Unknown	Channel:	GC_1
Calibration Level:		Wavelength:	n.a.
Instrument Method:	cannabis potency	Bandwidth:	n.a.
Processing Method:	Potency	Dilution Factor:	1,0000
Injection Date/Time:	11-mrt-19 16:27	Sample Weight:	1,0000

Chromatogram



Integration Results							
No.	Peak Name	Retention Time min	Area mV*min	Height mV	Relative Area %	Relative Height %	Amount
2	CBD	1,525	0,9795	68,400	78,96	78,93	2,080%
Total:			0,980	68,400	78,96	78,93	