

PROCESSING

OxiME Cream Developers are available in 7, 10, 20, 30 and 40 volumes. All may be used with ColorME recommended usages + mixing ratio are shown below.

USES	PROCESSING CREAM	TIMING	MIXING
For deposit and minimal lift	10 VOLUME 3% OxiME Cream Developer	25 MINUTES	1:1.5 RATIO
1 - 2 levels of lift or optimal coverage	20 VOLUME 6% OxiME Cream Developer	35 MINUTES	1:1.5 RATIO
PERMANENT LEVEL 1 - 10 2 - 3 levels of lift	30 VOLUME 9% OxiME Cream Developer	45 MINUTES	1:1.5 RATIO
3 - 4 levels of lift	40 VOLUME 12% OxiME Cream Developer	45-55 MINUTES	1:1.5 RATIO
HIGH LIFTS 4 levels of lift	40 VOLUME 12% OxiME Cream Developer	45-55 MINUTES	1:2.5 RATIO
SEMI PERMANENT For deposit	7 VOLUME 2.1% OxiME Cream Developer	20 MINUTES	1:2 RATIO

ADDITIONAL NOTES:

- Development times are a guideline and may be extended as needed, particularly where extra lift, coverage or vibrancy is desired.
- Room temperature processing is always recommended for predictable, consistent results.
- Following processing time and before rinsing, remove the colour around the hairline with RemoveME Hair Color remover wipes to avoid staining before water is applied.
- Recommended application is on dry hair. Application on damp hair will deliver a more demi-permanent result.

INTENSIFIERS



LEVEL	SHADE + INTENSIFIER
8 +	30 ml/gr + a pea size amount
7	30 ml/gr + 4 ml/gr
6	30 ml/gr + 5 ml/gr
5	30 ml/gr + 6 ml/gr
4	30 ml/gr + 7 ml/gr
3	30 ml/gr + 8 ml/gr
2	30 ml/gr + 9 ml/gr
1	30 ml/gr + 9 ml/gr

RE-PIGMENTATION

When using a fashion shade to darken more than two levels on previously lightened or processed/damaged hair, re-pigmentation is recommended for full tonality and longevity. See re-pigmentation chart.

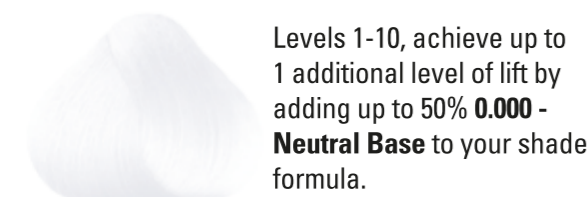
TARGET LEVEL	RE-PIGMENTATION COLOUR	PROCESSING CREAM	TIMING	MIXING
9	8.34	7 VOLUME 2.1% OxiME Cream Developer	20 MINUTES	1:2 RATIO
8		7 VOLUME 2.1% OxiME Cream Developer	20 MINUTES	1:2 RATIO
7	7.34	7 VOLUME 2.1% OxiME Cream Developer	20 MINUTES	1:2 RATIO
6		7 VOLUME 2.1% OxiME Cream Developer	20 MINUTES	1:2 RATIO

MIXING AND FORMULATION

GRAY COVERAGE

- Me Professional ColorME is formulated to deliver exceptional coverage on up to 100% gray hair.
- For optimal coverage use 20 volume 6% OxiME Cream Developer
- To achieve full coverage on over 70% gray hair, either:
 - Add up to 50% .0 serie - N, .00 serie - NN or .003 serie - NNG to your selected shade.
 - Drop one level darker than your desired end result.
 - Change the mixing ratio to 1:1

0.000 - NEUTRAL BASE



Example: 30 ml/gr Neutral Base + 30 ml/gr 8.3 - 8G + 90 ml/gr OxiME Cream Developer

When **0.000 - Neutral Base** is added, gray coverage may be achieved but with a more translucent result. Depending on how much is used you will likely lose some dye deposition as it dilutes the formula as well.

It is not recommended to add to HighLifts.

You can also use **0.000 - Neutral Base** to create a shade you don't have. An example would be if you had a 6.0 - 6N, but not a 7.0 - 7N, you could mix 50% **0.000 - Neutral Base** with 6.0 - 6N to get APPROXIMATELY a 7.0 - 7N.



Me Professional
Katernstraat 33 f-g | 1321 NC Almere | The Netherlands
www.meprofessional.nl

LUMINOUS HAIR COLOR

PERMANENT HAIR COLOR

PERMANENTE HAARFÄRBUNG

PERMANENTE HAARKLEURING

COLORANTE POUR CHEVEUX

COLORANTE PER CAPELLI

LEVEL AND TONE NUMBERING SYSTEM

HOW TO IDENTIFY THE LEVEL AND TONAL SERIES:

The first number represents the level of the colour in the series. Example: 8.34 - 8GC, the "8" represents a level 8.

The number(s)/letter(s) behind the level indicator represent the tonal series.

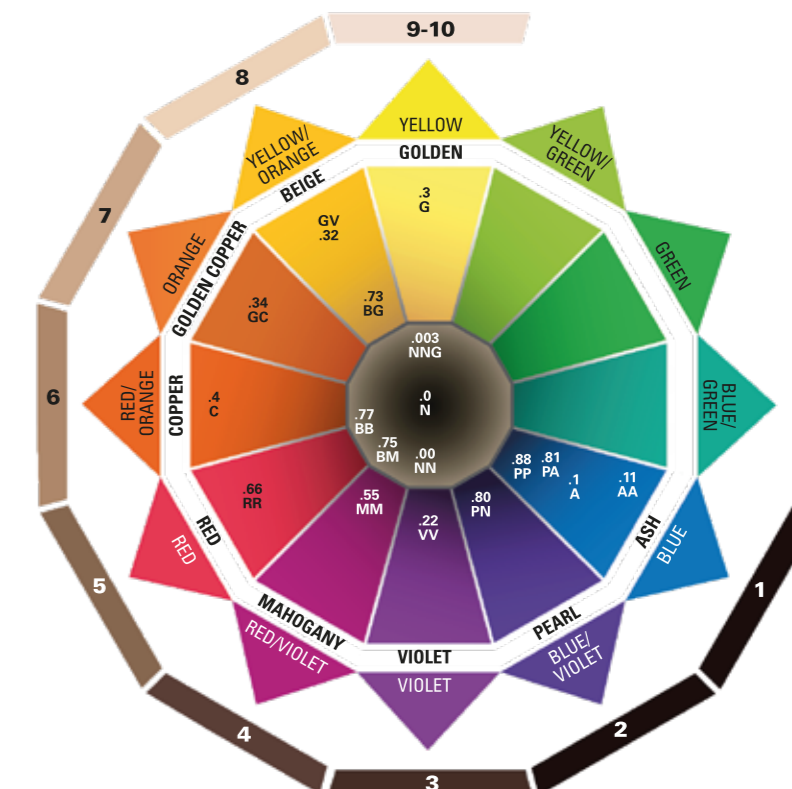
- The first number/letter represents the primary tone.
- The second number/letter represents to the secondary tone.

TONAL BASE KEY		SECONDARY TONE (COPPER)	
NATURAL	.0	PRIMARY TONE (GOLDEN)	8.34
ASH	.1		
VIOLET	.2	LEVEL	8GC
GOLDEN	.3		
COPPER	.4	PRIMARY TONE (GOLDEN)	SECONDARY TONE (COPPER)
MAHOAGANY	.5		
RED	.6		
BROWN	.7		
PEARL	.8		

THE COLORME COLOUR MAP

READING THE COLOUR MAP

- The level bar on the outer portion of the map represents the 10 level system. It will help to determine dominant pigment at each level.
- The outer triangles represent the dominant pigment at each level. Example: the dominant pigment at a level 7 is orange.
- The inner portion of the map represents where each of the ColorME tonal series is on the map. This will aid in determining the best tonal series to enhance or neutralize the dominant pigment in the hair.



TONAL SERIES CHART

SERIES	NUMBER DESTINATION	LETTER DESTINATION
NATURALS	.0	N
INTENSE NATURALS	.00	NN
WARM NATURALS	.003	NNG
HAZELNUT	.73	BG
GOLDEN	.3	G
BEIGE	.32	GV
GOLDEN COPPER	.34	GC
COPPER	.4	C
INTENSE RED	.66	RR
INTENSE CHOCOLATE	.77	BB
HOT CHOCOLATE	.75	BM
INTENSE MAHOAGANY	.55	MM
INTENS VIOLET	.22	VV
PEARL NATURALS	.80	PN
PEARL ASH	.81	PA
INTENSE PEARL	.88	PP
ASH	.1	A
INTENSE ASH	.11	AA

THE LEVEL SYSTEM + DOMINANT PIGMENT

A LEVEL IS THE LIGHTNESS OR THE DARKNESS OF A COLOUR. THIS METHOD OF MEASUREMENT IS USED IN BOTH NATURAL AND ARTIFICIAL COLOUR.

The chart below shows the dominant pigment present at each level, as well as the corrective base needed to neutralize.

LEVEL	SHADE NAME	DOMINANT PIGMENT	NEUTRALIZING BASE
10	LIGHTEST BLONDE	PALE YELLOW	
9	VERY LIGHT BLONDE	YELLOW	
8	LIGHT BLONDE	YELLOW/ORANGE	
7	MEDIUM BLONDE	ORANGE	
6	DARK BLONDE	RED/ORANGE	
5	LIGHT BROWN	RED	
4	MEDIUM BROWN	RED/VIOLET	
3	DARK BROWN	VIOLET	
2	VERY DARK BROWN	BLUE/VIOLET	
1	BLACK	BLUE	

LUMIPLEX® TECHNOLOGY

Protects the hair from damage during the colouration process. It interlinks with the hair fibres to enforce strong structural bonds. Repairing the hair from within. The result is stronger and healthier hair.

The high performance formulation of Lumiplex® balances the pH level to lock in colour pigments and ensures superior hair quality, longlasting colour brilliance and shine.



Healthy Hair

Damaged Hair

PROFESSIONAL
COLORME

WITH LUMIPLEX® TECHNOLOGY

