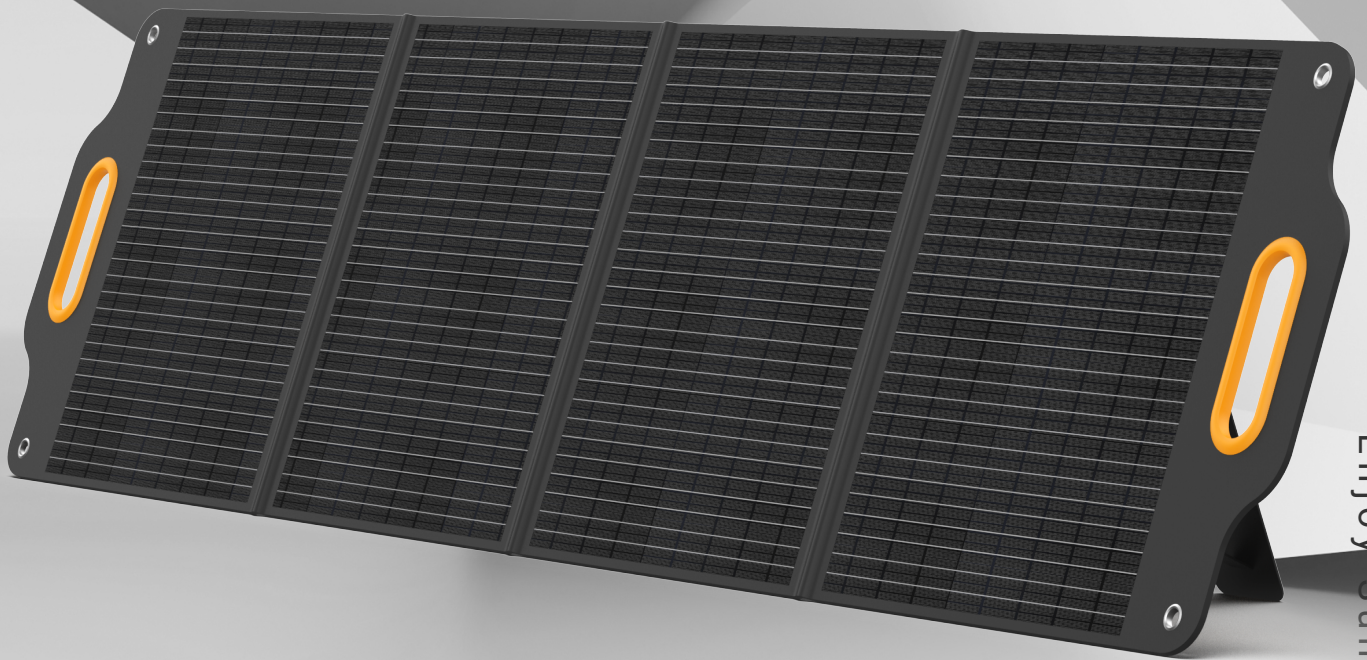


**POWERNESS**

ALWAYS BE POWERED

# SolarX S200



Enjoy Sunshine, Utilize Sunlight

## Portable Solar Panel

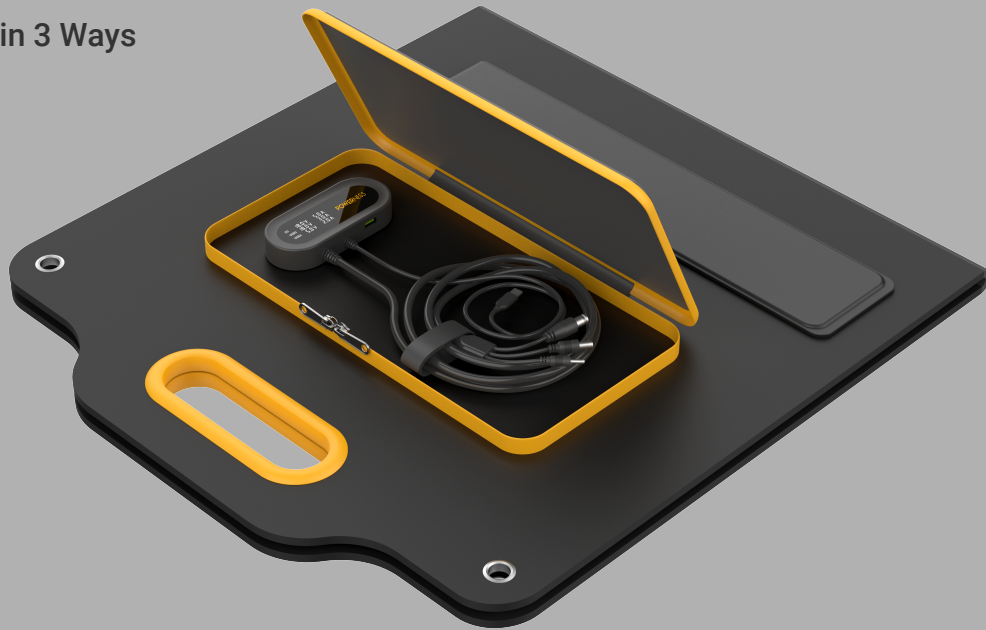
Exclusive Patent  
LCD Digital Window

Visualize charging efficiency



# Multiple Connectors

Power Devices in 3 Ways



- Built-in USB-C cable

- USB-A port

Directly charge your devices, like laptops, phones, tablets, etc.

- Built-in 3-in-1 cable with 3 connectors: 4mm, 6mm, and 8mm/7909

Compatible with most common power stations on the market.



## Magnetic Closure

Set up and Pack up Made Easy



## ETFE Laminated Panel

Outstanding Light Transmittance



## IP65 Grade

Durable & Resilient. Off Grid Ready



## Premium Monocrystalline Silicon Cell

23% conversion efficiency

## Specification

Model:	SolarX S200
Peak Power:	200W
Cell Efficiency:	23%
Power Voltage:	29V
Power Current:	6.9A
Open Circuit Voltage:	32V

USB-A Output:	5V, 2.4A
USB-C Cable Output:	5V, 2.4A
Operating Temperature range:	-10-65°C
Dimensions (unfolded):	2165 x 542 x 7mm
Dimensions (folded):	595 x 542 x 40mm
Weight:	8.3kg

**POWERNESS**  
ALWAYS BE POWERED

[www.powerness.com](http://www.powerness.com)

[Powerness](#)

[powerness\\_official](#)

[PowernessGlobal](#)

[Powerness](#)

[partners@powerness.com](mailto:partners@powerness.com)