

# HY-03 Air Cushion Machine Operation Manual

**Rotim.nl**  
**Verpakkingen**  
You carry, we care



HY-03 is a high-end, stable and reliable machine newly designed for air cushion films, bubble film, air pillow, air tube film, etc.

It is equipped with imported power source and brushless motor, which has longer run time than other motor. HY-03 has advantages in longer usage, higher speed, firmer sealing, better inflating effect and wide applicable range, its quality and service life overall is better than the same type of product in the market.

Please read the instruction manual carefully, before installing and using the product.  
(Please keeping properly in case of use need)

# I. About Operation Manual

This manual wrote for identify the machine parts location, interpret the system's operation and solve solution for basic malfunction.

This manual for HY-03 Air Cushion Machine.

Special Symbol's Definition and Suggestion:



“Lightning Flash” Symbol: Not insulated parts inside the machine, touch may cause electric shock.



“High Temperature” Symbol: Remind of high temperature risk, do not touch.



“Pinching Hand” Symbol: Remind of rolling risk, keep hands away.



“Emergency Stop” Symbol: Remind if there is emergency situation, press this button to stop the machine.

## II. Instructions for Safe Use

**1. Please read carefully and understand completely all the information of this manual.**

**2. Please confirm the following matters before operate system:**

- The authorized dealer or technicians has provided complete training to the operator.
- The operator has read and understood all the safety signs posted on the device.
- Confirm the air filling machine power part--the power source meet the demand of machine, and use with grounding device.



**Warn:** Improper grounding may cause electric shock.



**Warn:** Do not open the machine cover. the cover disassemble should done by authorized technicians and technician trained maintenance personnel.



**Warn:** Be careful of rolled into the machine! when machine start to work like pull the film, inflate the film or sealing, please keep finger, hair, jewelry, and clothes away from the sealing roller.

**3. Please confirm the following matters before maintain and repair equipment:**

- Power off the machine and plug off the power source.
- Note: HY-03 air cushion machine only can used for our company's film. if use with the film not provided by our company, we have the right to terminate the maintenance services immediately and stop supply all the film and relative use material.



**Warn:** Except the description of this manual's "Maintenance & Repair", please do not attempt to repair or modify HY-03 filling machine. Repair should be carried out by representatives of our company, authorized distributor or professional maintenance personnel trained by our company.



**Warn:** Please do not open the belt cover except for execute the belt replacement of this manual.

#### **4. Inspect the equipment regularly to ensure the followings:**

- The wires of all parts are not scratched, damaged and broken.
- No debris remains on the belt.
- All control parts and display unit are operating normally.



**Warn:** Any inconsistent system description to the manual during use, please turn off the system immediately, unplug the power plug and contact our technical service representative.

#### **5. Noise**

HY-03--The max. running noise of the machine is 95 decibels, please confirm if this value available for the standards of local regulations.

#### **6. Environmental Conditions**

- Storage temperature: Machine:0-43℃; Film: 0-43℃
- Operating temperature: Machine 16-43℃; Film: 16-43℃



**Warn:** The film can only work well (good seal effect) when placed at the above temperature parameter range, if storage in the environment exceed/below above temperature range, might cause the film broken.

#### **7. Potential risks**

Even though most of part of HY-03 equipped with belt cover, still some parts not been covered, please be careful during operation.

### III. Structure of HY-03



Pic 1

## IV. Operation Panel



Pic 2

## V. Parameters

### Parameters

Dimension: 400MM\*165MM\*310MM (L\*W\*H)

Package Dimension: 510MM\*410MM\*460MM (L\*W\*H)

Net weight: 17KG

Weight: 19KG

### Technical Parameters

Model: HY-03

Rated power: 450W

Heat seal temperature: 1-150°C (adjustable)

Speed: 28m/min MAX

Anti-electric shock sort: I

Input voltage: Default AC 220V (110V adjustable)

Rate frequency: 50HZ/60HZ

Power connection: Y

Air volume: 700L/min MAX

## VI. Packing List

Item	Qty
Host	1
Material Holder	1
Power Cord	1
Hexagonal	3
Guiding Roll	3
Spare Belt	4
High Temperature Resistant Tape	8
Blade	5

## VII. Installation and Operation

1. Install the material holder, guiding rolls and guiding axle in the position shown in pic 1.
2. Connect the power cord, power on the machine, put the film roll into the material holder, pull the film pass through the feed rod to the middle part of the belt, press the auto-feed button, and after the film been pulled out of the filling machine, then press the start button for filling air.

The guiding videos for installation and operation could be reviewed in the machine system.

Main menu --- Setting ---Installation Video

Note: if the power switch light is on and the LCD screen not light, please check if the emergency stop button is on.

## VIII. Parameters Setting Recommended

### 1. For Air Cushion Film (40cm width)

Parameters Setting Recommended for Air Cushion Film (40cm width)			
Thickness	Temperature Setting	Speed Setting	Air Setting
15um	108	70	95
18um	110	70	95
20um	112	70	95

### 2. For Air Pillow (20cm width)

Parameters Setting Recommended for Air Pillow (20cm width)			
Thickness	Temperature Setting	Speed Setting	Air Setting
15um	108	70	40
18um	110	70	40
20um	112	70	40

## IX. Fault Symptom and Processing

Fault symptom	Processing
The film is stuck	1. Check if the hook switch is in the right position
	2. Reduce the air volume
	3. Check the blade to see if there is rust or chip, if yes, please replace the new blade
	4. Check if there is foreigners on the traction wheel or the belt, if there is, please clean the wheel and belt
The sealing of the film is worn-out	Try to reduce the temperature value
The sealing of the film is poor or air is leaking out	Try to increase the temperature value
The film runs out of the air tube in operation	Try to reduce the air volume value
The belt is slipping	Check if there is foreigners on the belt, if yes, clean it
The power is on but the screen is not light	Check if the emergency button is on

**Note:** If the fault could not be solved, please contact the authorized dealer or technician for further treatment.

## X. Cautions

1. Do not use in a humid environment.
2. Before operation, please take care of following instruction:
  - If the system is not grounding properly, may cause an electric shock.
  - Do not open the protective or examine/repair cover. Only our service personnel or authorized dealer maintenance service personnel can open.
  - During operation and loading material, please avoid direct touch to roller from finger, clothes, jewelry and hair. (tie hair up suggested).
3. Inflatable bag only is suggested used as packing materials, do not use it as float, pillow, or child toy.
4. The weight of filling material (film) is not over 7KG, during material loading, do NOT stress it or leaning.
5. When the material is driven by the machine, static electricity will be generated. The material itself will also have static electricity. The operator cannot wear slippers or not wear shoes. Otherwise, the human body will become a conductor of static electricity, and feel like electric shock.
6. After long time operating the machine, if the film does not run smoothly or gets stuck, please replace the blade in time.
7. After long time operating the machine, if appearance the sealing edge is not firm, broken seal edge, please confirm if the temperature proper, if the temperature belt broken, if yes, please replace it in time.
8. Speed and air volume of the air filling machine should adjust mutually, different films have different parameters, no rated standard, need adjust the parameters according to the actual condition.

**Attention:** Do not run the machine without material ! ! !

9. **Warn:** Improper grounding may cause electric shock.
10. **Warn:** Using with Wring board will be increasing the static electricity, which may cause operational problem and make the operator feel uncomfortable.

For normal operation, the power of HY-03 should be AC 220V (110V adjustable), average current should be 2A, peak current should be 3.5A. Frequency to be 50hz/60hz. Rated power to be 450W. The inner of the machine has grounding wire, please use single-phase three-wire system power cord, the use of the grid must have a reliable grounding, otherwise static electricity cannot be discharged, the human body will become a conductor of static electricity, and feel like electric shock.

## XI. Storage of the Materials

1. Please use the film produced by our company, if not, may cause broken bag problems or influence the effect of the packing bag, and even damage the machine.
2. The temperature range of storage should be 0-43°C. The film is available when stored in this range (0-43°C). If exceed or below this range, the films may be damaged.
3. The operating temperature range of the films is 16-43°C .  
Please used the film within this temperature range to achieve the best sealing effect.

## XII. Composition

### 1. Main power switch

The Main power switch located the back of the machine, to turn on/off the system.

### 2. Operational Panel – touch screen

All the parameters setting, stop and start are operated through the touch screen of operation.

### 3. Main power cord

Plug the power cord into the appropriate power outlet.

### 4. The side cover plate of machine

Inside are machine parts.

**Warn:** Do not open the side cover, we only suggest it to be opened by our company representative and authorized maintenance personnel.

### 5. Material holder

It is used to install the film roll, so that the film roll can be fixed and supported.

### 6. Heating part

It is used to place the air tube, blade and heating module, etc., which can inflate and heat seal the air bag.

**Warn:** The roller temperature is very high, be careful of scalded

**Warn:** Please careful and do not get rolled into the machine!

### 7. Film roll

Film rolls with air inlet tunnel are available to be inflated and sealed by the machine.

### 8. Emergency stop switch

DO NOT use Emergency stop switch as pause/stop button.



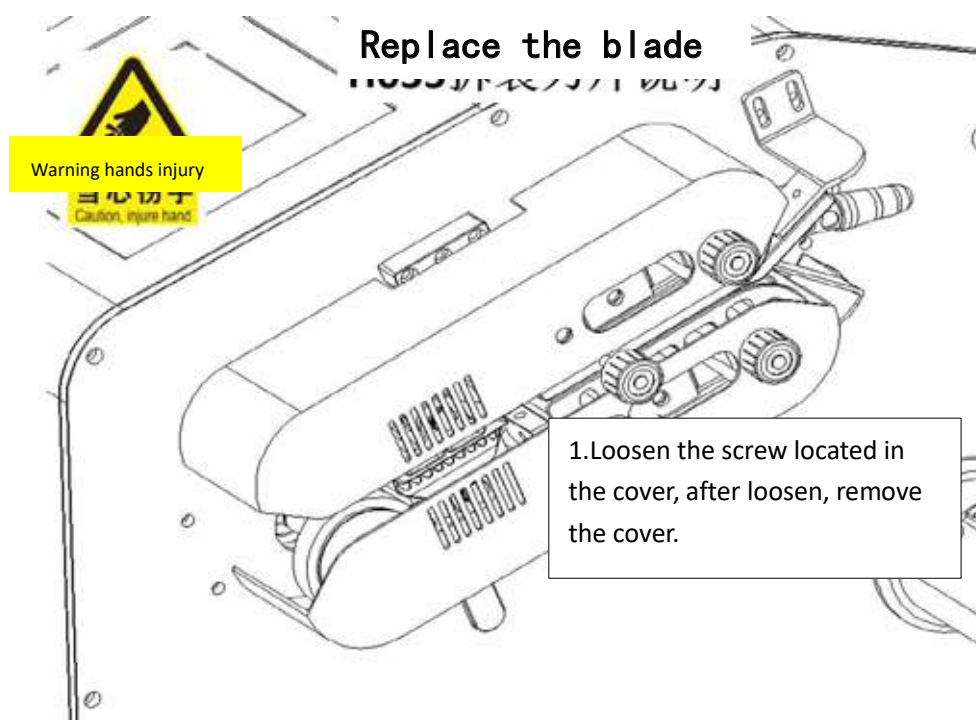
## XIII. Maintenance & Repair

### 1. Preventive maintenance

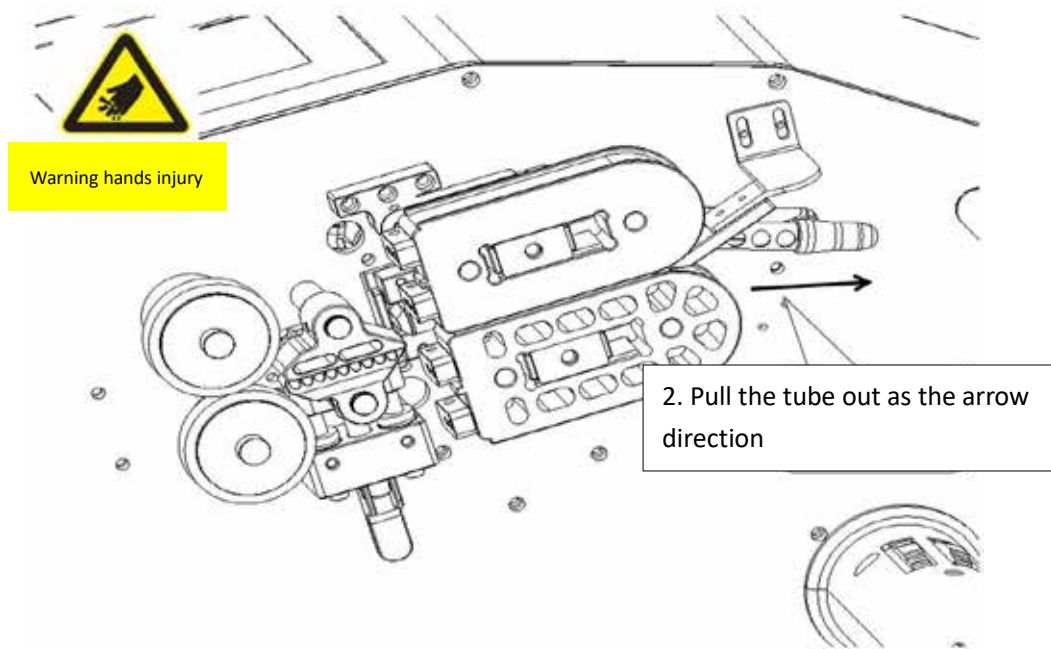
**Before maintain or repair the machine, please do remember turn off the machine and plug the main power cord off from the socket.**

Maintenance cycle	Detail	Description
Weekly	Check & clean	1. Open the belt cover of machine, blow off the dust; 2. Check if there is any abnormal abrasion machine component.
Every year	Contact	Arrange an on-site inspection; Contact the authorized distributor or our technical service representative to check the machine.

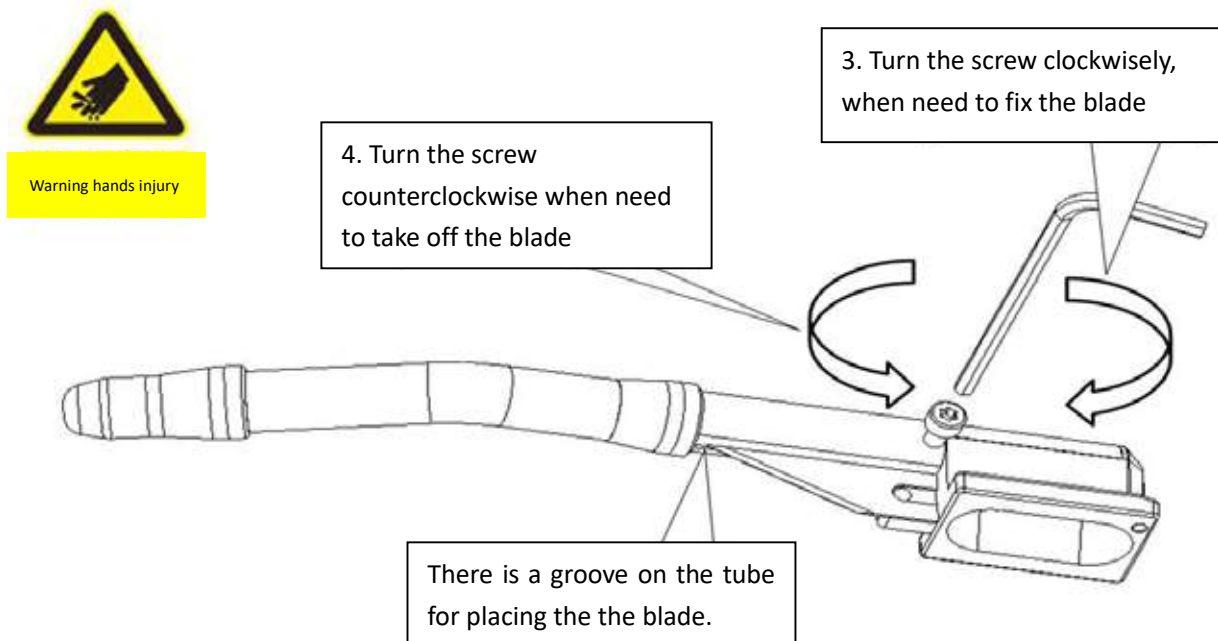
### 2. Replace the blade



Pic 3 (Tube replace and install instruction diagram 1)



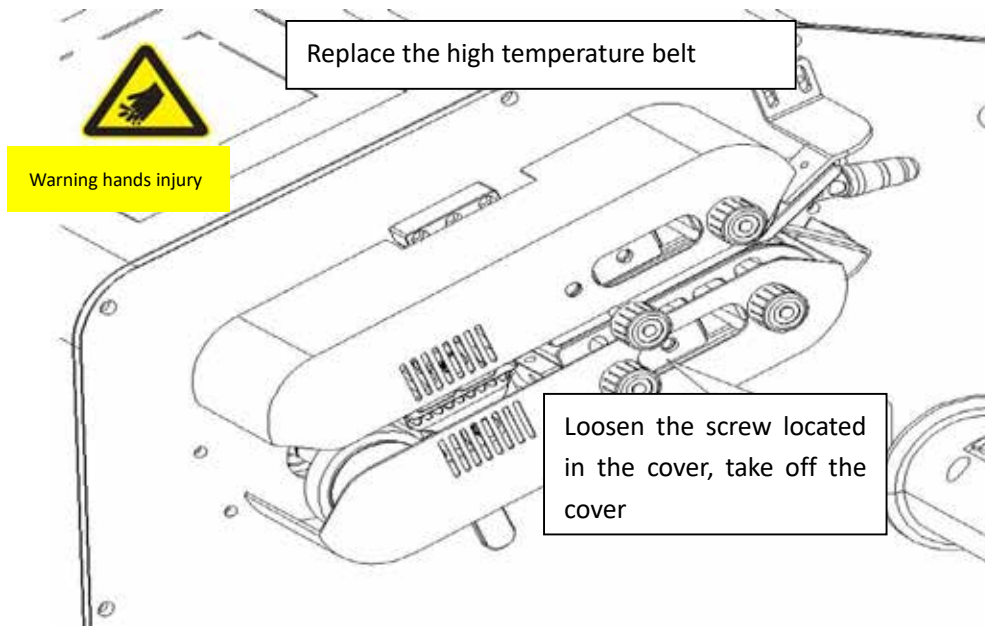
Pic 4 (blade replace and install instruction diagram 2)



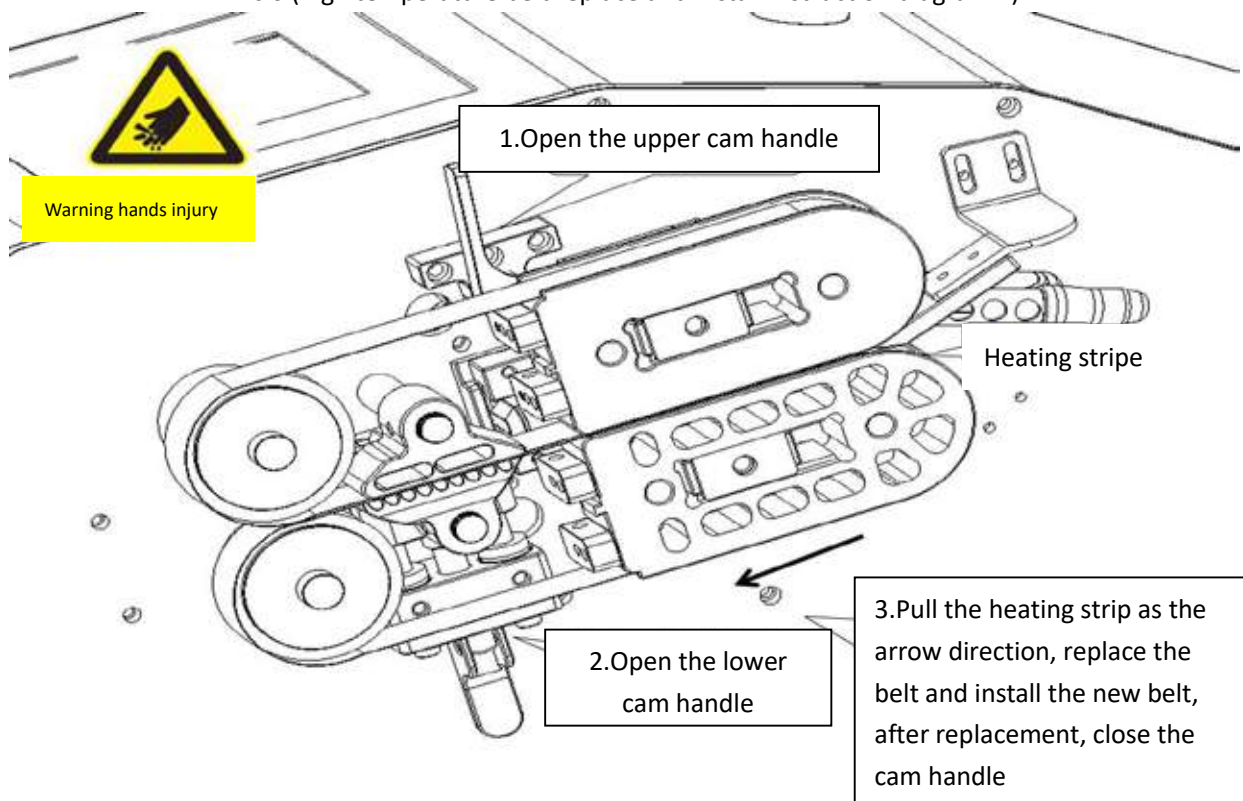
Pic 5(blade replace and install instruction diagram 3)

Remove the tube as pic 4 shown, Loosen the blade and fixed the screw to replace the blade (as pic 5 shown), then install the tube back.

### 3. Replace the high temperature belt



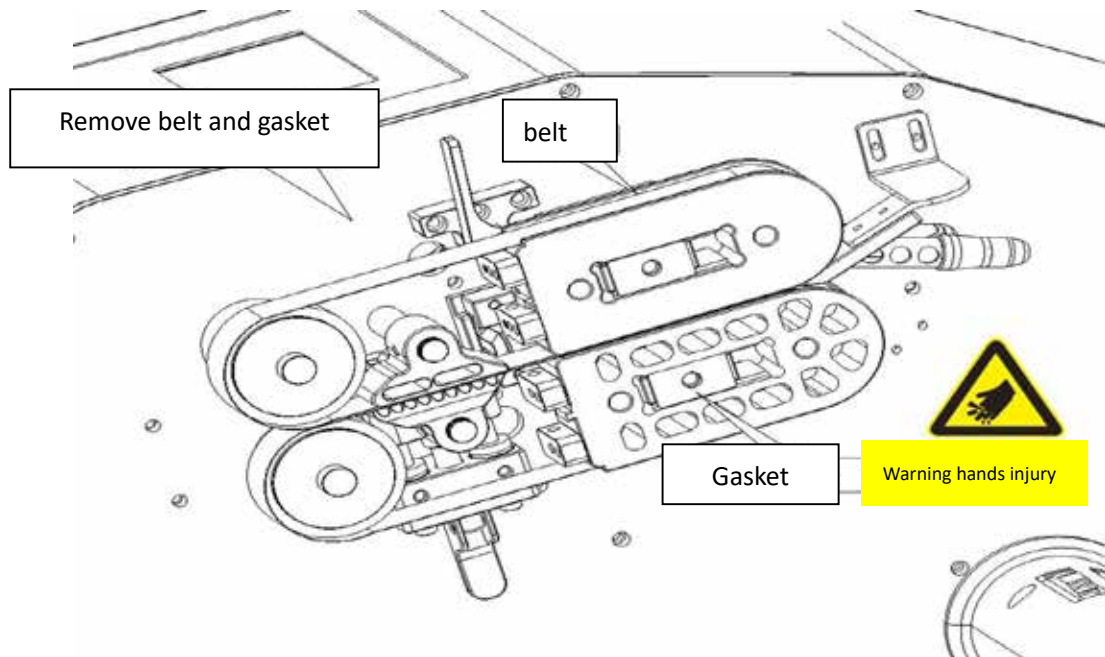
Pic 6 (high temperature belt replace and install instruction diagram 1)



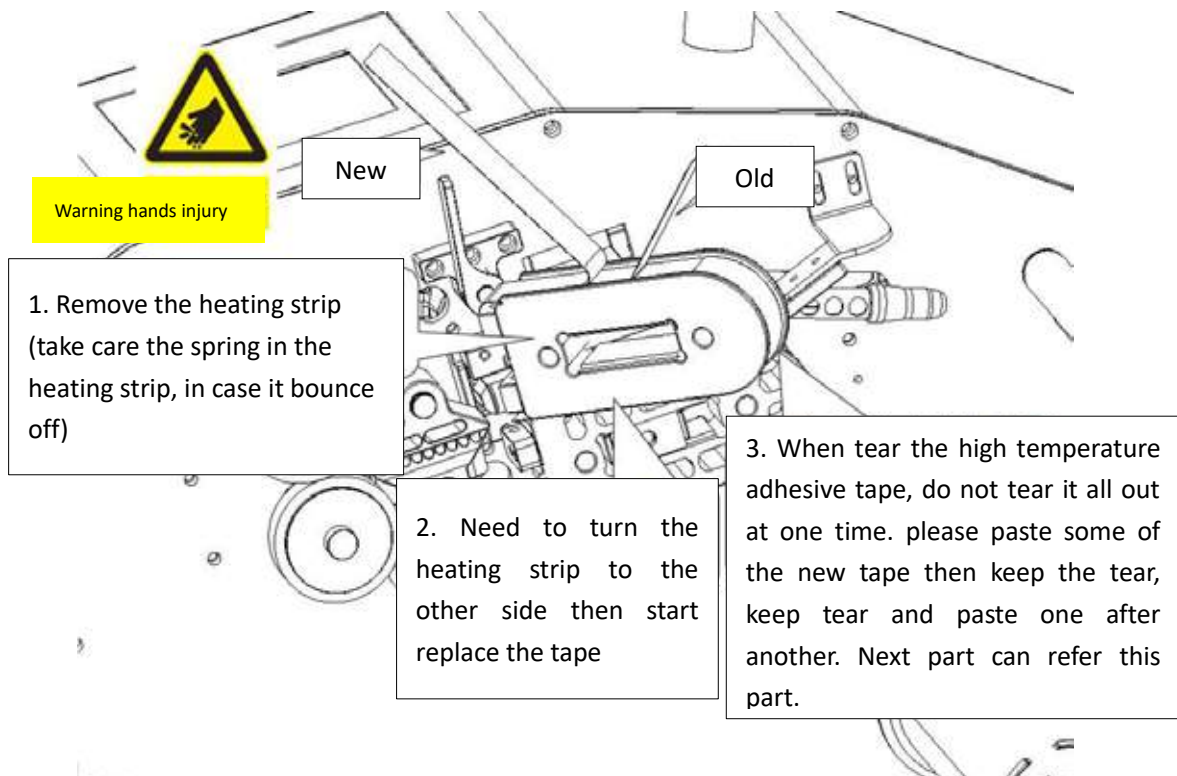
Pic 7 (high temperature belt replace and install instruction diagram 2)

Loosen the cover screw and open the cover, open the upper and lower cam handles, push the heating strip to the direction of traction wheel, replace the belt, then close the cam handles, install the cover back.

#### 4. Replace the high temperature adhesive tape



Pic 8 (tape replace and install instruction diagram 1)



Pic 9 (tape replace and install instruction diagram 2)

Remove the belt cover, push the heating strip to the direction of traction wheel (to make the belt loose), After belt been loose, then remove the belt, use screwdriver to loose the screw and gasket, which in the middle of heating strip; then remove the heating strip

(noted: springs may slip out), tear the high temperature adhesive tape and paste a new one, then install the heating strip, belt and belt cover back to the original position in proper order.