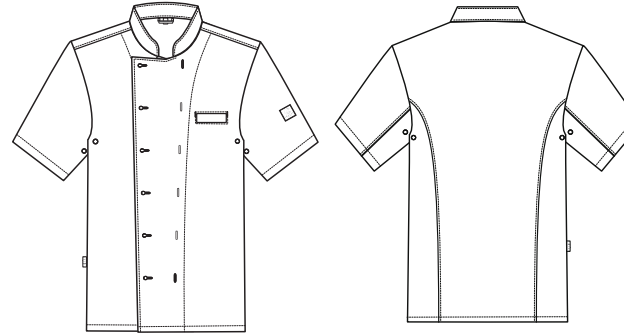


# CUISINE PREMIUM

## Regular Fit



STYLE  
5567



### GERMAN

#### KOCHJACKE KURZARM

- Regular Fit
- Elastisch
- Brustleistentasche
- Lüftungslöcher
- Wiener Nähte im Rücken
- **GRÖSSEN:** XS-3XL

### ENGLISH

#### CHEF'S JACKET SHORT SLEEVE

- regular fit
- elastic
- breast welt pocket
- ventilation holes
- back side princess seams
- **SIZES:** XS-3XL

### FRENCH

#### VESTE DE CUISINE MANCHES COURTES

- Regular fit
- Extensible
- Poche poitrine gilet
- Orifices de ventilation
- Coutures princesse dans le dos
- **TAILLES :** XS-3XL

### DUTCH

#### KOKSBUIS KORTE MOUW

- regular fit
- elastisch
- borstzakje
- ventielatiegatjes
- Weense naden op de rug
- **MAAT:** XS-3XL

NR: 5567.6220.010 SCHWARZ  
NR: 5567.6220.090 WEISS

NO: 5567.6220.010 BLACK  
NO: 5567.6220.090 WHITE

RÉF : 5567.6220.010 NOIR  
RÉF : 5567.6220.090 BLANC

NR: 5567.6220.010 ZWART  
NR: 5567.6220.090 WIT

**GEWEBE:** 49% Baumwolle, 49% Polyester, 2% Elastolefin, 200 g/m<sup>2</sup>

**PFLEGE WEISS:**

**PFLEGE SCHWARZ:**

**FABRIC:** 49% cotton, 49% polyester, 2% elastolefin, 200 g/m<sup>2</sup>

**CARE WHITE:**

**CARE BLACK:**

**TEXTILE :** 49 % coton, 49 % polyester, 2 % élastoléfine, 200 g/m<sup>2</sup>

**ENTRETIEN BLANC :**

**ENTRETIEN NOIR :**

**DOEK:** 49% katoen, 49% polyester, 2% elastolefine, 200 g/m<sup>2</sup>

**ONDERHOUD WIT:**

**ONDERHOUD ZWART:**



Die gesamte Baumwolle ist Fairtrade-zertifiziert und von Fairtrade-Produzenten angebaut. [www.info.fairtrade.net](http://www.info.fairtrade.net)



All of the cotton is Fairtrade certified and sourced from Fairtrade producers. [www.info.fairtrade.net](http://www.info.fairtrade.net)



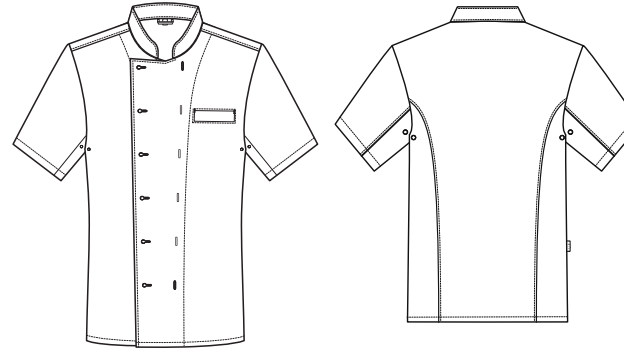
Tout le coton est certifié Fairtrade et provient de producteurs du commerce équitable Fairtrade. Visitez [www.info.fairtrade.net](http://www.info.fairtrade.net)



Al het katoen is Fairtrade gecertificeerd en afkomstig van Fairtrade boeren. Zie [www.info.fairtrade.net](http://www.info.fairtrade.net)

# CUISINE BASIC

## Regular Fit



STYLE  
5567



### GERMAN

#### KOCHJACKE KURZARM

- Regular Fit
- Brustleistentasche
- Lüftungslöcher
- Wiener Nähte im Rücken
- **GRÖSSEN:** XXS-3XL

NR: 5567.8000.010 SCHWARZ  
NR: 5567.1900.090 WEISS

**GEWEBE 8000:** 65% Polyester, 35% Baumwolle, 210 g/m<sup>2</sup>

**PFLEGE:** 95°C, no bleach, no iron, no dry clean, no tumble dry.

**GEWEBE 1900:** 100% Baumwolle, 230 g/m<sup>2</sup>

**PFLEGE:** 95°C, no bleach, no iron, no dry clean, no tumble dry.



100% Cotton

### ENGLISH

#### CHEF'S JACKET SHORT SLEEVE

- regular fit
- breast welt pocket
- ventilation holes
- back side princess seams
- **SIZES:** XXS-3XL

NO: 5567.8000.010 BLACK  
NO: 5567.1900.090 WHITE

**FABRIC 8000:** 65% polyester, 35% cotton, 210 g/m<sup>2</sup>

**CARE:** 95°C, no bleach, no iron, no dry clean, no tumble dry.

**FABRIC 1900:** 100% cotton, 230 g/m<sup>2</sup>

**CARE:** 95°C, no bleach, no iron, no dry clean, no tumble dry.



100% Cotton

### FRENCH

#### VESTE DE CUISINE MANCHES COURTES

- Regular fit
- Poche poitrine gilet
- Orifices de ventilation
- Coutures princesse dans le dos
- **TAILLES :** XXS-3XL

RÉF : 5567.8000.010 NOIR  
RÉF : 5567.1900.090 BLANC

**TEXTILE 8000 :** 65 % polyester, 35 % coton, 210 g/m<sup>2</sup>

**ENTRETIEN :** 95°C, no bleach, no iron, no dry clean, no tumble dry.

**TEXTILE 1900 :** 100 % coton, 230 g/m<sup>2</sup>

**ENTRETIEN :** 95°C, no bleach, no iron, no dry clean, no tumble dry.



100% Cotton

### DUTCH

#### KOKSBUIS KORTE MOUW

- regular fit
- borstzakje
- ventilatiegaaatjes
- Weense naden op de rug
- **MAAT:** XXS-3XL

NR: 5567.8000.010 ZWART  
NR: 5567.1900.090 WIT

**DOEK 8000:** 65% polyester, 35% katoen, 210 g/m<sup>2</sup>

**ONDERHOUD:** 95°C, no bleach, no iron, no dry clean, no tumble dry.

**DOEK 1900:** 100% katoen, 230 g/m<sup>2</sup>

**ONDERHOUD:** 95°C, no bleach, no iron, no dry clean, no tumble dry.



100% Cotton