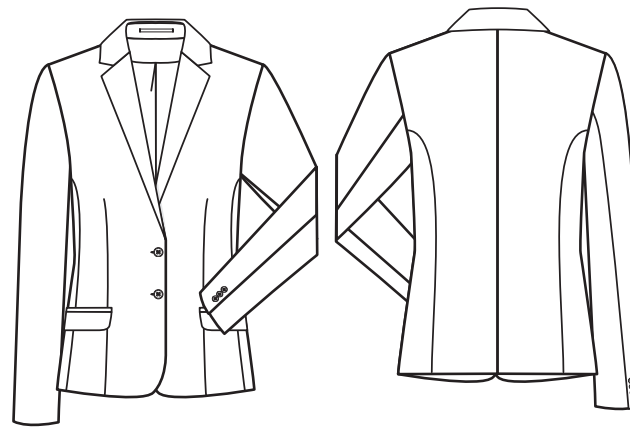


# BASIC

## Comfort Fit



# STYLE

## 1432



### GERMAN

#### DAMEN-BLAZER

- Comfort Fit
- 2-Knopf
- 2 Pattentaschen
- 1 Reißverschluss-Innentasche
- Rückenlänge 60 cm | Gr. 38
- **GRÖSSEN:** 34–52, 72–88

### ENGLISH

#### LADIES BLAZER

- comfort fit
- 2-button
- 2 flap pockets
- 1 zip pocket inside
- back length 60 cm | size 38
- **SIZES:** 34–52, 72–88

### FRENCH

#### BLAZER FEMME

- Comfort fit
- 2 boutons
- 2 poches à rabat
- 1 poche intérieure zippée
- Longueur dos 60 cm | taille 38
- **TAILLES :** 34–52, 72–88

### DUTCH

#### DAMES BLAZER

- comfort fit
- 2 knoops
- 2 klepzakken
- 1 binnenzak met ritsluiting
- ruglengte 60 cm | maat 38
- **MAAT:** 34–52, 72–88

NR: 1432.7000.010 SCHWARZ  
NR: 1432.7000.011 ANTHRACIT  
NR: 1432.7000.020 MARINE

NO: 1432.7000.010 BLACK  
NO: 1432.7000.011 ANTHRACITE  
NO: 1432.7000.020 NAVY BLUE

RÉF : 1432.7000.010 NOIR  
RÉF : 1432.7000.011 ANTHRACITE  
RÉF : 1432.7000.020 BLEU MARINE

NR: 1432.7000.010 ZWART  
NR: 1432.7000.011 ANTRACIET  
NR: 1432.7000.020 MARINE

**GEWEBE:** 54% Polyester, 44% Schurwolle, 2% Elasthan, 235 g/m<sup>2</sup>  
**FUTTER:** 100% Polyester

**PFLERGE:**



**FABRIC:** 54% polyester, 44% virgin wool, 2% elastane, 235 g/m<sup>2</sup>  
**LINING:** 100% polyester

**CARE:**



**TEXTILE :** 54 % polyester, 44 % laine vierge, 2 % élasthanne, 235 g/m<sup>2</sup>  
**DOUBLURE :** 100 % polyester

**ENTRETIEN :**



**DOEK:** 54% polyester, 44% scheerwol, 2% elastaan, 235 g/m<sup>2</sup>  
**BINNENVOERING:** 100% polyester

**ONDERHOUD:**

