



## ZyWALL VPN2S

### VPN Firewall

The ZyWALL VPN2S is designed for small businesses, branch offices and home/remote workers. It provides you Internet connections with high reliability, high performance and high security to maintain operating efficiency and productivity. The VPN2S has five Gigabit Ethernet ports (2 are configurable for LAN/WAN and 3 for LAN) plus one USB port for 3G/4G dongles. With two WAN ports and a 3G/4G dongle, the VPN2S can be set up as a triple-WAN gateway for load balancing or failover backups. The VPN2S is a reliable, secure VPN router as well as it supports IPSec, PPTP and L2TP to fit various user scenarios.

### Benefits

#### Secure, reliable connections for your networks

Zyxel's ZyWALL VPN2S offers high-capacity virtual private network (VPN) capabilities that allow multiple offices and tens of employees to access the information they need anywhere – as secure as if they were in the headquarters. It also offers secure connections for a number of remote workers depending on your needs.

The ZyWALL VPN2S supports L2TP/IPSec VPN on a wide variety of mobile Internet devices running iOS or Android. In addition, the ZyWALL VPN2S can also act as an L2TP VPN client for home workers to connect office networks without complex configuration.



Multi-WAN load balancing and failover (GbE WANs and 3G/4G USB WAN)



High-throughput VPN solution (up to 35 Mbps)



High-performance SPI firewall (Web Security, DoS/DDoS Protection)



Bandwidth management



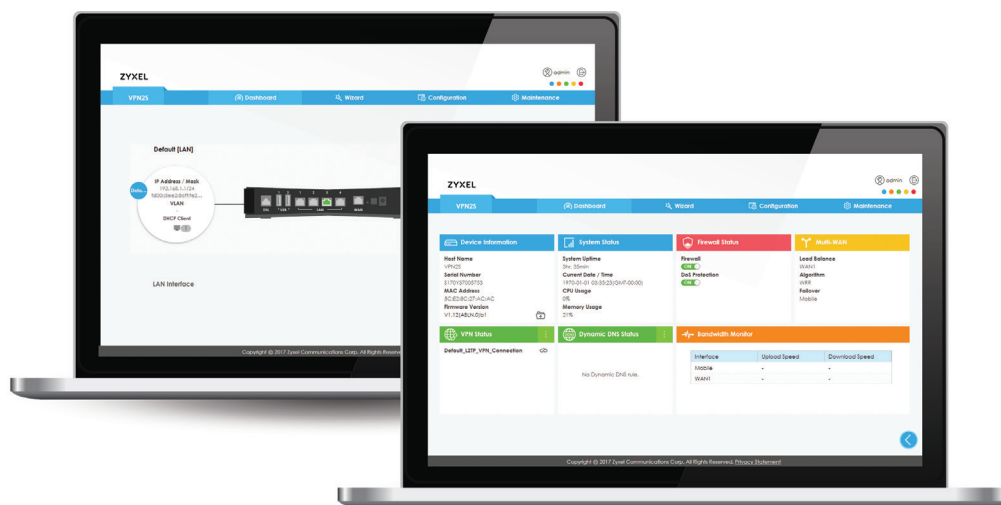
Remote management (HTTP, HTTPS, SSH, Telnet and TR-069, SNMP)

## Powerful, robust network security

Network security is always the most important issue in terms of avoiding Internet threats. The ZyWALL VPN2S offers SPI Firewall functions that work against attacks including Denial of Service (DoS), IP-based attacks, unauthorized remote system access, anomaly traffics and illegal packets for highly secure managed network environments.

## Easy-to-use GUI and swift management

Zyxel's Wizard and GUI will have you connected quickly, and they both provide a multi-lingual Web GUI. For efficient management, the ZyWALL VPN2S offers completely remote management tools that empower administrators to configure and monitor ZyWALL easily.



## ZyWALL VPN Firewall Quick Finder



Model	VPN2S	VPN50
Firewall Throughput (Mbps)	850	800
Max. Concurrent Sessions	50,000	400,000
VPN throughput (Mbps)	35	150
Max. Concurrent IPSec VPN Tunnels	20	50
Content filtering	Client <sup>*1</sup>	Client
Geo Enforcer	Yes <sup>*2</sup>	Yes
SecuDeployer	Client <sup>*2</sup> /-	Client/-
SSL VPN	-	Yes
IPSec VPN	Yes	Yes
L2TP/L2TP over IPSec	Client/Server	Client/Server

\*1: Content filtering support in OPAL BE 1.20.

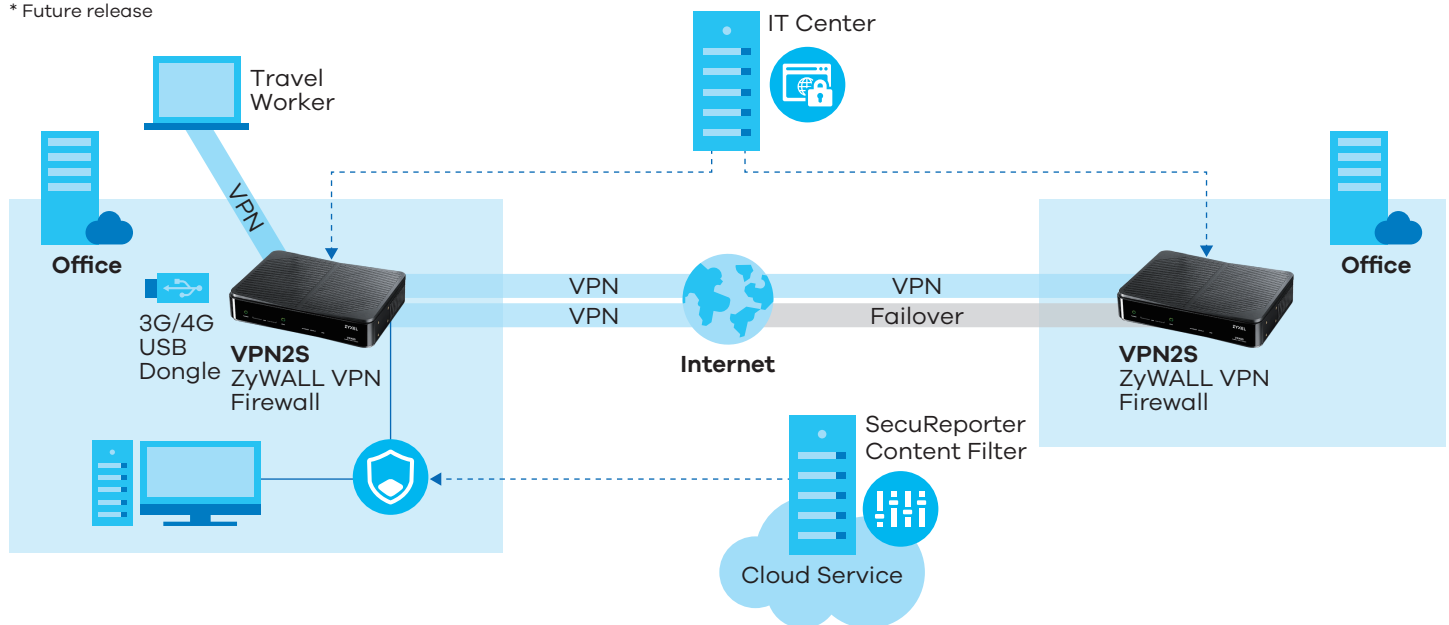
\*2: Geo Enforcer and SecuDeployer support in OPAL BE 1.25.

## Application Diagram

### VPN and security applications

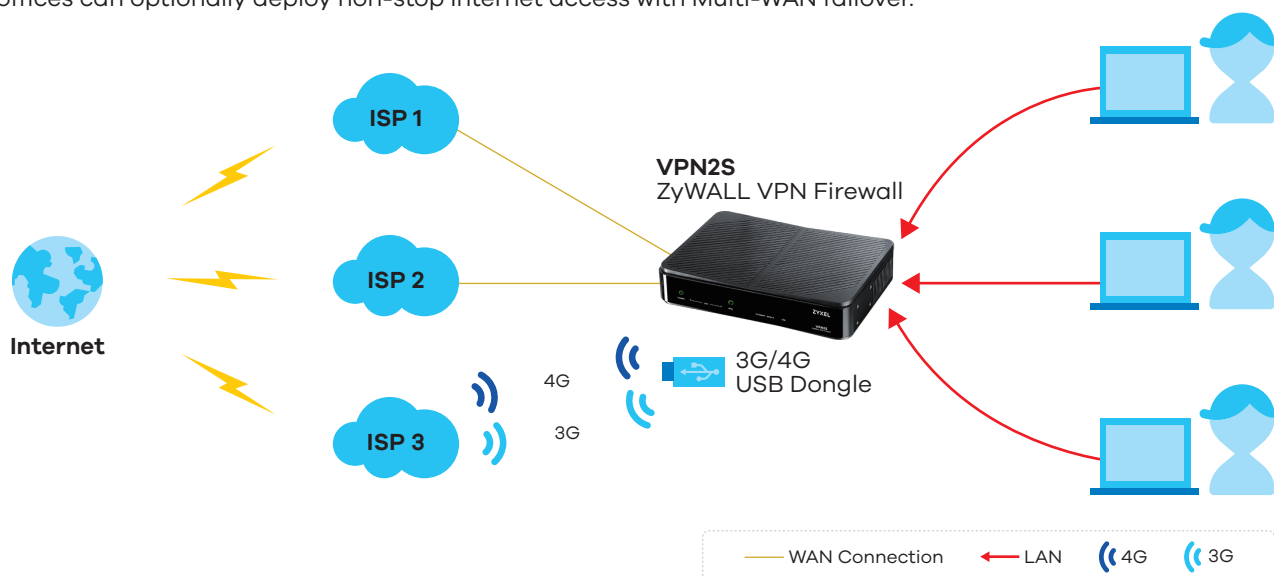
- Organizations, branch offices, partners and home users can deploy Zyxel ZyWALL VPN2S for Site-to-Site IPSec VPN and L2TP Over IPSec VPN clients.
- VPN is a solution to establish secured network connections and to reduce long-distance telephone charges.
- Remote users can securely access company resources with their computers or smartphones via Zyxel's ZyWALL VPN2S.
- The ZyWALL VPN2S can establish L2TP VPN connections to service providers for secured Internet access.
- SecuReporter\* not only provides analysis analyses, but also helps saving resources with cloud computing. It can also send realtime monitoring and alert messages via the mobile app.
- VPN2S with Content filter\* prevents users from accessing malicious or malware sites or inappropriate contents.

\* Future release




### Multi-WAN applications

- The VPN2S can adapt to a variety of network environments and enable offices or service providers to perform flexible installations for Ethernet or mobile WAN access.
- Multi-WAN load balancing ensures seamless Internet connectivity even with heavy traffics.
- The offices can optionally deploy non-stop Internet access with Multi-WAN failover.



# Specifications

Model		VPN2S
Product photo		
		
Hardware Specifications		
10/100/1000 Mbps RJ-45 ports	3 x LAN, 1 x OPT, 1 x WAN	
USB ports	2 x USB 2.0	
Rack-mountable <sup>*1</sup>	Yes	
Fanless	Yes	
System Capacity & Performance <sup>*2</sup>		
SPI firewall throughput (Mbps) <sup>*3</sup>	850	
VPN throughput (Mbps) <sup>*4</sup>	35	
Max. TCP concurrent sessions <sup>*5</sup>	50,000	
Max. concurrent IPsec VPN tunnels <sup>*6</sup>	20	
Customizable zones	Yes	
IPv6 support	Yes	
VLANs	16	
Key Software Features		
Multi-WAN Load Balance/Failover	Yes	
Virtual Private Network (VPN)	Yes (IPSec, L2TP over IPSec, PPTP, L2TP)	
VPN client	IPSec/L2TP/PPTP	
Content filtering <sup>*7</sup>	1 year free	
Firewall	Yes	
VLAN/interface group	Yes	
Geo Enforcer <sup>*8</sup>	Yes	
VLAN/Interface group	Yes	
Bandwidth management	Yes	
Logging and monitoring	Yes	
Cloud helper	Yes	
Remote management	Yes	
Power Requirements		
Power input	110 to 240V AC, 50/60 Hz, 1.5A max.	
Max. power consumption (watt)	13.1	
Heat dissipation (BTU/hr)	44.7	
Physical Specifications		
Item	Dimensions (WxDxH)(mm/in.)	210 x 115 x 33/8.27 x 6.06 x 1.57
	Weight (Kg/lb.)	0.495/1.09
Packing	Dimensions (WxDxH)(mm/in.)	288 x 189 x 83/11.34 x 7.44 x 3.27
	Weight (Kg/lb.)	1.13/2.49
Accessories	Power adapter	
Environmental Specifications		
Operating environment	Temperature	0°C to 40°C/32°F to 104°F
	Humidity	20% to 95% (non-condensing)
Storage environment	Temperature	-30°C to 60°C/-22°F to 140°F
	Humidity	20% to 95% (non-condensing)
MTBF (hr)	44,000	
Certifications		
EMC	FCC Part 15B (Class B), FCC Part 68 CE EMC (Class B)	
Safety	CE LVD	

\*: This matrix with firmware OPAL BE 1.12 or later.

\*1: Rack-mount kit is optional

\*2: Actual performance may vary depending on network conditions and activated applications.

\*3: VPN throughput measured based on RFC 2544 (1,518-byte UDP packets).

\*4: Maximum throughput based on RFC 2544 (1,424-byte UDP packets).

\*5: Maximum sessions measured using the industry standard IXIA IxLoad testing tool.

\*6: Including Gateway-to-Gateway and Client-to-Gateway.

\*7: Content filter support in OPAL BE 1.20 or later.

\*8: Geo enforcer support in OPAL BE 1.25 or later.

## Feature Sets

### Ethernet WAN

- IPoE/PPPoE
- DHCP Client/Static IP
- Routing mode/Bridge mode
- IGMP proxy
- DHCP option 43, 60, 61, 120, 121, 125
- Outgoing VLAN tagging (802.1Q)
- Configurable MTU
- Port setting (LAN port can be configured as WAN port)
- MAC clone

### Mobile WAN

- WAN connection via 3G/4G USB Dongle\*
- Authentication type (PPP/CHAP)
- Budget control (Time budget/Data budget)

### Multi-WAN

- Load balance/failover
- Load balance algorithm (Weight round robin/Least load first/Spillover)
- Connectivity check (Auto fallback when primary WAN recovers)
- Dynamic DNS and default server for multiple interfaces

### Firewall/Security

- Stateful Packet Inspection (SPI)
- DoS/DDoS protection (Protocol anomaly, traffic anomaly, flooding dection)
- Firewall flow chart
- Up to 500 firewall rules
- MAC filter
- Firewall rule schedules
- Device service access control
- Zone control

### VPN

- IPSec, L2TP over IPSec (Server/Client), L2TP (Server/Client), PPTP
- Key management: manual key, IKEv1 and IKEv2 with EAP
- Encryption: AES (128/192/256 bits), 3DES
- Support generating SHA-1 & SHA-2 certificate
- Perfect forward secrecy (DH groups 2/5/14)
- Up to 20 concurrent VPN tunnels
- Hardware VPN engine
- IPSec NAT traversal
- VPN dead peer detection, relay detection, and auto-reconnection
- PKI (X.509) certificate support
- VPN wizard for easy setup
- VPN failover

### VLAN/Interface Group

- VLAN tagging (802.1Q)
- 802.1P
- Multiple subnets
- DHCP option 60, 61, 125
- WAN/LAN bridge for triple play
- Port-Based VLAN

### Routing and NAT

- Port forwarding
- Port triggering
- Address mapping (One-to-One, Many-to-One, Many-to-Many)
- Policy route
- Static route
- Dynamic route (RIPv1/v2)
- Up to max. 50,000 concurrent NAT sessions

### Ethernet LAN

- DHCP server/relay
- Static DHCP
- Additional subnet (IP alias)
- Wake on LAN
- DHCP option 66, 67, 150
- DNS entry
- IGMP snooping
- DNS proxy and query forwarding by domain name

### Bandwidth Management

- Bandwidth limitation (upstream/downstream)
- Class-based bandwidth management
- QoS policer for guaranteed bandwidth
- QoS shaper for rate limit by outgoing interface
- 8-Level queue priority

### System Management

- Multi-lingual Web GUI
- Firmware upgrade via Web GUI, FTP, TR-069, and Cloud Helper
- USB file sharing
- AAA server
- Certificate management
- HTTP/HTTPS
- SSH
- Telnet
- TR-069
- SNMP v1, v2c

### IPv6

- IPv4/IPv6 dual stack
- DS-Lite
- 6RD
- SLAAC
- DHCPv6 client/server
- Static IP
- DNS
- MLD proxy

\*: For specific models supporting the 3G and 4G dongles on the list, please refer to the Zyxel product page at 3G dongle document.

# ZYXEL

Your Networking Ally

For more product information, visit us on the web at [www.zyxel.com](http://www.zyxel.com)

Copyright © 2018 Zyxel Communications Corp. All rights reserved. Zyxel, Zyxel logo are registered trademarks of Zyxel Communications Corp. All other brands, product names, or trademarks mentioned are the property of their respective owners. All specifications are subject to change without notice.

Datasheet [ZyWALL VPN2S](#)



5-100-00818006 03/18