

Ledvion

OUTDOOR - SOLAR LED LAMP

ART.NO. LVS10016 - LVS10017

Ledvion

Habraken 1205
5507 TB Veldhoven
The Netherlands
www.ledvion.com

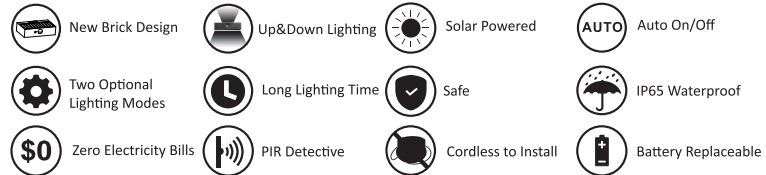


Please follow all instructions to operate.
Save this manual for future reference.

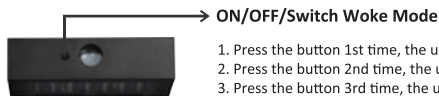
Specifications

Brightness	350LM
Output Power	3W
≈ Traditional Power	30W
LEDs	SMD2835*21PCS
Battery	18650, 3.7V, 1200mAh, 4.44Wh
Mono Solar Panel	DC5.5V, 1.15W
PIR Sensor	120° / 6 Meters
Beam Angle	140°*70°
Work Modes	2 Optional Work Modes
Charging Time	5-6 hours strong sunshine to fully charge
Lighting Time	35 hours
Installation Height	2-4M
Lighting Area	50m ²
Housing Material	ABS+PC, anti-UV, antioxidant, V0 fireproof
Lamp Dimension	137.6*90.4*35.4mm
Packing	1*Solar Lamp, 2*Expansion Plugs & Screws, 1*Measure Card, 1*User Manual
Warranty	2 Years (1 Year for Battery)

Top Features



2 Optional Work Modes



1. Press the button 1st time, the upper light flashes once, lamp enters Mode A.
2. Press the button 2nd time, the upper light flashes twice, lamp enters Mode B.
3. Press the button 3rd time, the upper light flashes 3 times, lamp turns off.

Mode A

Lamp automatically lights up at night, automatically turns to full brightness when motion is detected in the range $\leq 6m$, and then dims to lower brightness (upper light on, down light on) after 10 seconds of no motion.



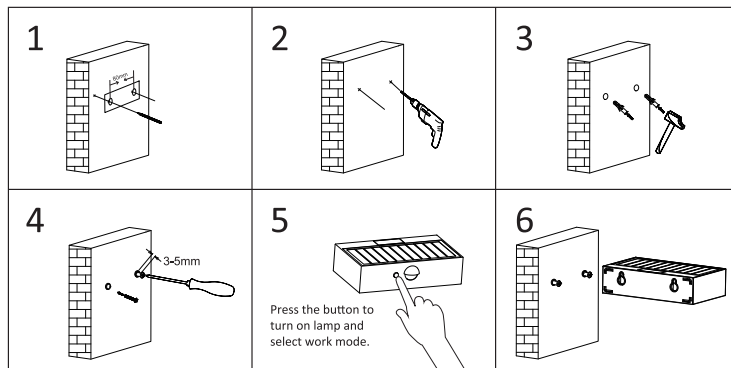
Mode B

Lamp automatically lights up at night, automatically turns to full brightness when motion is detected in the range $\leq 6m$, and then dims to lower brightness (upper light on, down light off) after 10 seconds of no motion.



Easy Installation

1. Please use the measure card to mark holes position.
2. Drill 2 holes($\phi 6mm$, depth 50mm) with a spacing of 80mm.
3. Fix the expansion plugs in the holes.
4. Fix the screws into the expansion plugs, allow the screws to protrude slightly around 3-5mm.
5. Turn on the lamp and set desired work mode.
6. Hang the lamp on the screws to secure it to the wall.



Cautions

1. This is a solar powered lamp, please install it in a location where can get efficient sunlight.
2. Please note the lighting time depends on sunshine duration & work mode.
3. Built-in intelligent IC is with over-charge and over-discharge protection, safe and durable.
4. When the lamp is turned off, it still can get solar charging at day time.
5. The lamp is equipped with an internal battery, which is replaceable.
If any need, please contact the seller for support.
6. Non-professionals please do not disassemble the lamp.
7. Please do not dispose the battery with household garbage to avoid explosion.

Package Content

1PC*Lamp	2PCS*Screws	1PC*Measure Card	1PC*User Manual