

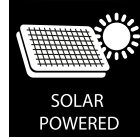
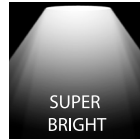


**Professional, Powerful, Longlasting**



Please read and follow all instructions to operate.  
Save this manual for future reference.

## Superior Features



## Product Image



**1500LM**  
≈ traditional 100W



**4800LM**  
≈ traditional 300W

## Top Specification

Brightness	1500LM
Output Power	10W
≈ Traditional Power	100W
LEDs	SMD2835*44pcs
Battery Pack	Li-ion battery, 18650, 3.7V, 3600mAh, 13.32Wh
Mono Solar Panel	4.5W, 5.5V
Digital PIR Sensor	120°/ 6 Meters
Lighting Area	60-80m <sup>2</sup>
Lamp Size	152.65*146.8*31.2mm
Solar Panel Size	202.1*220.9*24mm
Installation Height	2~4 Meters
Installation Distance	8-10 Meters
Warranty	2 years warranty (battery 1 year warranty)
Beam Angle	120°*60°, maximum lighting design, bigger lighting area
Working Modes	Keep Lighting Mode (Can DIY brightness and lighting time by remote) Sensor Mode
Charging Time	4~6 hours strong sunshine to fully charge
Lighting Time	Up to 60 hours according to different working mode
Lamp Bracket	360° adjustable
Solar Panel Bracket	270° adjustable
Connection Cable	5 meters long
Housing Material	ABS+PC, anti-UV, V0 fireproof
Packing	1 lamp, 1 solar panel, 1 remote control, 4 sets screws, 1 user manual

Brightness	4800LM
Output Power	30W
≈ Traditional Power	300W
LEDs	SMD2835*90pcs
Battery Pack	LiFePO4 battery, 32700, 6.4V, 6000mAh, 38.4Wh
Mono Solar Panel	12.5W, 10V
Digital PIR Sensor	120°/ 8 Meters
Lighting Area	100-150 m <sup>2</sup>
Lamp Size	199.7*190.9*49mm
Solar Panel Size	255.2*374.3*16.5mm
Installation Height	2~5 Meters
Installation Distance	10-14 Meters
Warranty	3 years warranty
Beam Angle	120°*60°, maximum lighting design, bigger lighting area
Working Modes	Keep Lighting Mode (Can DIY brightness and lighting time by remote) Sensor Mode
Charging Time	4~6 hours strong sunshine to fully charge
Lighting Time	Up to 60 hours according to different working mode
Lamp Bracket	360° adjustable
Solar Panel Bracket	270° adjustable
Connection Cable	5 meters long
Housing Material	ABS+PC, anti-UV, V0 fireproof
Packing	1 lamp, 1 solar panel, 1 remote control, 4 sets screws, 1 user manual

## Two Optional Working Modes



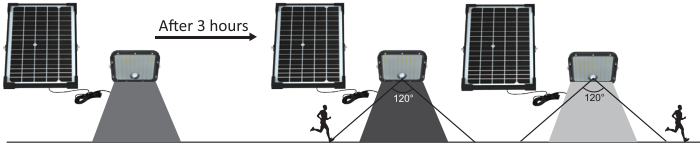
On/Off Button

Firstly, please press the button on the lamp, lamp turns on and automatically enter Keep Lighting Mode (Default Mode). Press the button again, lamp turns off.

When the lamp is turned off by pressing the button on lamp, the lamp has no memory. At the same time, the remote control does not work.

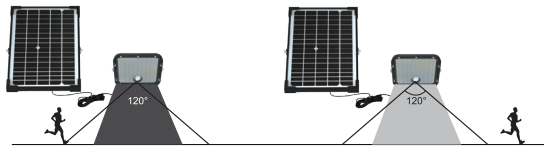
### Keep Lighting Mode (Default Mode)

Lamp automatically lights up at night and keeps 60% brightness for 3 hours, after which lamp turns to Sensor Mode.



### Sensor Mode

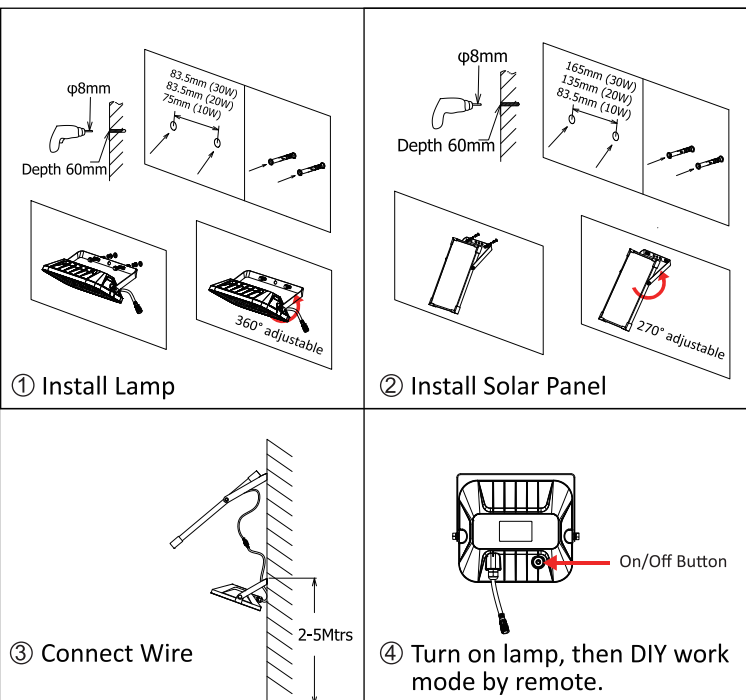
Lamp automatically lights up at night and turns to full brightness when motion is detected in the range, then turns to 5% brightness in 60 seconds of no motion.



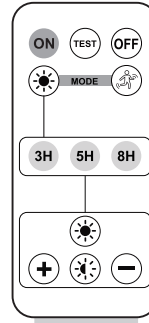
## Easy Installation

Prepare the lamp, accessories and tools well, confirm the installation location and wire length.

- Drill 2 holes of  $\Phi 8\text{mm}$  with a depth of 60mm on the wall, fix the lamp on the wall with expansion plugs and screws.
- Drill 2 holes of  $\Phi 8\text{mm}$  with a depth of 60mm on the wall, fix the solar panel on the wall with expansion plugs and screws.
- Connect the wire of the solar panel to the lamp and screw it tightly.
- Press the button on the lamp to activate the remote control, then use remote control to set desired working mode.



## Operations of DIY Work Mode by Remote Control



Remove the film before use.

- \* Please remove the insulating film of the remote control before use.
- \* The remote control can be only workable after the lamp is turned on by pressing the button on the lamp.
- \* Remote control distance: 6 meters.
- \* Each time you press a button on the remote, the lamp flashes once. When the brightness is adjusted to maximum or minimum, the lamp will no longer flash.
- \* ON/OFF switch on the remote control has memory function.

ON	Press ON, lamp turns on.
OFF	Press OFF, lamp turns off.
TEST	Press and hold TEST for 5 seconds to enter the Test Mode, lamp keeps lighting on with 100% brightness of current power state for 10 minutes, then automatically switch to the latest operation set before.
MODE	Press MODE, lamp enters Sensor Mode as above. * Neither lighting time nor brightness can be adjusted under Sensor Mode. * If press lighting time keys under Sensor Mode, lamp will switch to Keeping Lighting Mode.
SUN	Press SUN, lamp enters default Keep Lighting Mode as above.
3H 5H 8H	Lighting Time
SUN	60% brightness
SUN	30% brightness
+	+15% brightness by each press (Max 60% brightness)
-	-15% brightness by each press (Min 15% brightness)

These 7 keys (in gray background) are only used to adjust lighting time and brightness under Keep Lighting Mode. You can press the time and brightness keys in no order.

**For example:**  
Press SUN + + 5H, lamp works as below:  
Lamp lights up at night and keep 45% brightness for 5Hrs, after which lamp turns to Sensor Mode.

## Operation of Indicator Light

This lamp has a RGB indicator light, which shows the charging state of the lamp.

Indicator Light Status During the Day	Working Status of Solar Lamp
Green light is always on.	Lamp is fully charged.
Blue light is flashing.	Solar panel is charging normally.
Indicator light is off.	The current ambient sunlight is too weak to charge the lamp.

Indicator Light Status at Night	Working Status of Solar Lamp
Indicator light is off.	Lamp discharges and lighting on.
Red light is flashing.	Lamp discharges and lighting on, battery power is low.

## Wide Applications

Widely used for construction site, gate, courtyard, corner, garden, industrial area, warehouse, garage, parking lot, roof, factory, pathway, farm, pavilion, countryside, pergola, bus station etc.

## Cautions

- This is a solar powered lamp, please install the solar panel in a location where can get enough sunshine.
- Please note the lighting time depends on sunshine duration & working mode.
- The On/Off button on the lamp is power-off switch, helpful to save power consumption. Also the lamp can still get solar charge at day time when the lamp is turned off.
- Built-in intelligent IC is with over-charge and over-discharge protection, safe & durable.
- The lamp is equipped with an internal battery pack, which is replaceable. If any need, please contact seller for correct new battery pack.
- Non-professionals please do not disassemble the lamp.
- Please do not dispose the battery with household garbage to avoid explosion.