

Ledvion

EMERGENCY EXIT SIGN

3 YEARS OF WARRANTY

Habraken 1205
5657 EA Veldhoven
The Netherlands
www.ledvion.com

LVE10004, LVE10009, LVE10010, LVE10011 & LVE10014

EN WARNING NOTE!

Attention

These luminaires are used indoors (ta40°C) connected to mains power supply. In nonnal operation the led strip lights and the battery is charging. In case of a mains power supply failure the luminaire will light the led strip automatically in emergency mode (powered by its battery). When the mains power supply is restored the device turns to nonnal operation. The light source contained in this luminaire shall only be replaced by the manufacturer or his service agent or a similar qualified person. The battery is not replaceable.

NL WAARSCHUWING!

Attentie

Deze armaturen worden binnenshuis gebruikt (bij 40°C) en zijn aangesloten op het lichtnet. Bij normaal gebruik licht de ledstrip op en wordt de batterij opgeladen. Als de netvoeding uitvalt, licht de armatuur de ledstrip automatisch op in de noodmodus (gevoed door de batterij). Wanneer de netvoeding weer is hersteld, schakelt het apparaat over naar normaal gebruik. De lichtbron in dit armatuur mag alleen worden vervangen door de fabrikant of zijn serviceagent of een vergelijkbaar gekwalificeerd persoon. De batterij kan niet worden vervangen.

ES ADVERTENCIA!

Atención

Estas luminarias se utilizan en interiores (ta40°C) conectadas a la red eléctrica. En funcionamiento normal, la tira de leds se enciende y la batería se carga. En caso de fallo de la red eléctrica, la luminaria encenderá automáticamente la tira de leds en modo de emergencia (alimentada por su batería). Cuando se restablece el suministro eléctrico, el dispositivo vuelve al funcionamiento normal. La fuente de luz contenida en esta luminaria sólo debe ser sustituida por el fabricante o su agente de servicio o una persona cualificada similar. La batería no es sustituible.

DE WARNUNG!

Beachtung

Diese Leuchten werden in Innenräumen (ta40°C) verwendet und sind an das Stromnetz angeschlossen. Im Normalbetrieb leuchtet die LED-Leiste und der Akku wird aufgeladen. Im Falle eines Stromausfalls leuchtet die Leuchte automatisch im Notbetrieb (durch den Akku). Wenn die Stromversorgung wiederhergestellt ist, schaltet das Gerät in den Normalbetrieb zurück. Die in dieser Leuchte enthaltene Lichtquelle darf nur durch den Hersteller oder seinen Kundendienst oder eine ähnlich qualifizierte Person ausgetauscht werden. Die Batterie ist nicht austauschbar.

FR AVERTISSEMENT!

Attention

Ces luminaires sont utilisés à l'intérieur (ta40°C) et connectés à l'alimentation secteur. En fonctionnement normal, la bande LED s'allume et la batterie se recharge. En cas de panne de courant, le luminaire allume automatiquement la bande de LED en mode d'urgence (alimenté par sa batterie). Lorsque l'alimentation secteur est rétablie, l'appareil repasse en mode normal. La source lumineuse contenue dans ce luminaire ne doit être remplacée que par le fabricant, son agent de service ou une personne qualifiée similaire. La batterie n'est pas remplaçable.

NOTE! After finishing the installation you must power the luminaire at least for 24 hours for battery charging to perform the nominal autonomy.

TECHNICAL DATA:

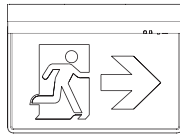
Model	LVE10004
Rated Voltage	AC220-240V~ 50/60Hz
Input Power	4.5W
Power Factor	0.4
CCT	5700K - 7200K
Battery	LiFePO ₄ 3.2V 2100mAh
Recharging Time	24H
Discharge Duration	3H
Exit Signs	Replaceable
Operating Temp Range	ta: 0~40°C
IP Degree	IP20
Dimensions in mm	316 x 229 x 41.5

Ledvion

EMERGENCY EXIT SIGN



INCLUDED: 1x

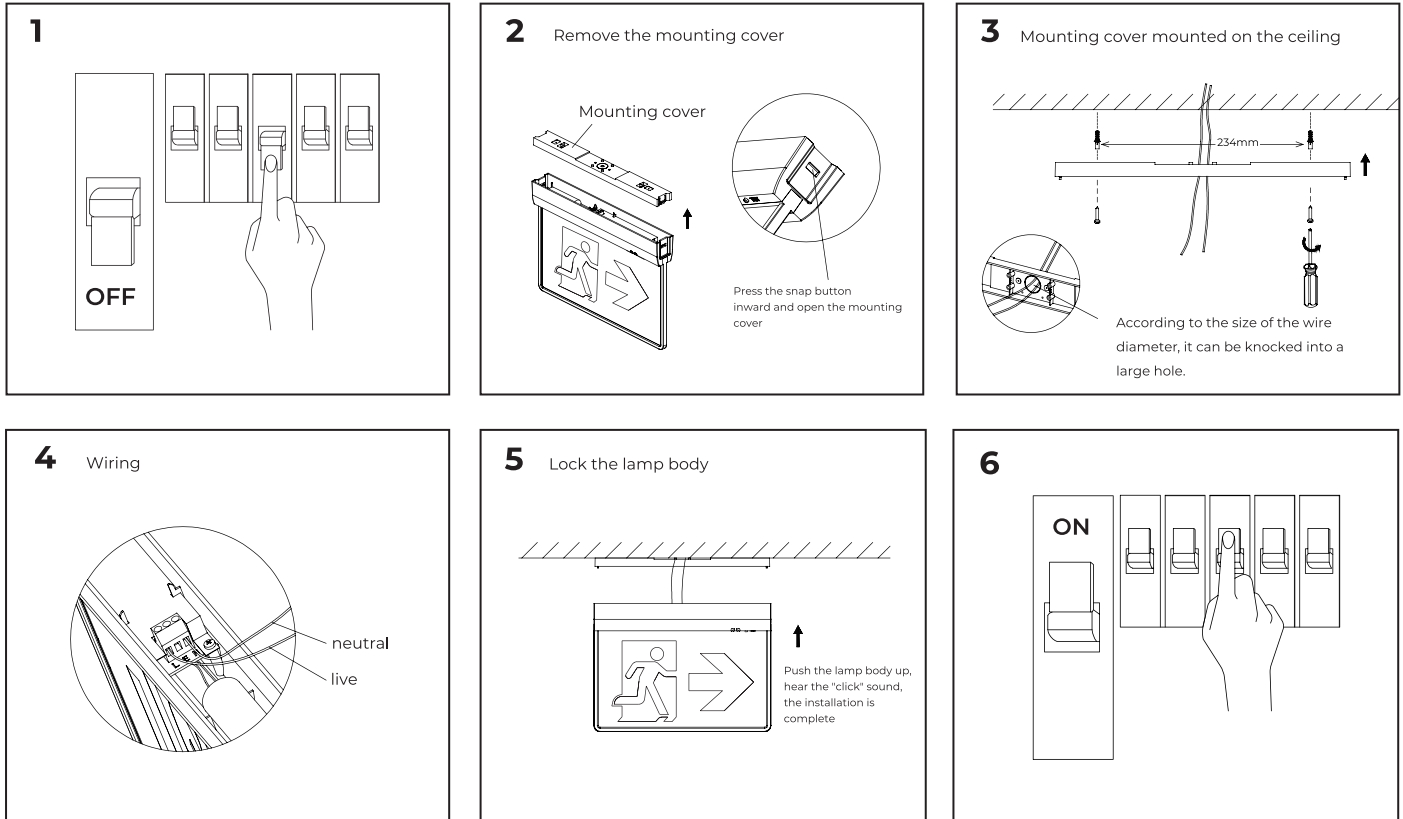


Ledvion

Habraken 1205
5657 EA Veldhoven
The Netherlands

www.ledvion.com

INSTALLATION INSTRUCTION:



MANUAL TEST:

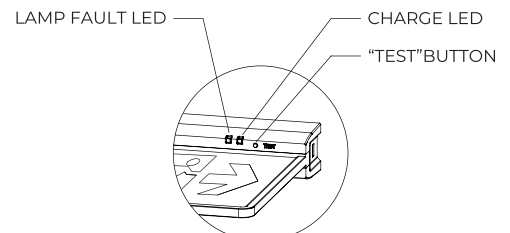
In the main power state, press the test switch for 1 second and do not release the lamp to the emergency function, the green indicator light is extinguished, release the test switch to restore the main power state; press the test switch twice, the green indicator light flash, the luminaires switch to the emergency function of monthly inspection simulation, and the main power status is automatically restored after 25-35 seconds of emergency; press the test switch three times, the green indicator light accelerates the flash, and the LUMINAIRES switch to the emergency function of semi-annual inspection simulation (180 days), emergency response time is not less than 30-35 minutes after the automatic restoration of the main power status. (if the emergency does not reach the emergency time, the yellow light will flash and report the fault.)

AUTOMATED TEST:

When the lamp is under the main power condition for 30 days (± 2 days), it automatically turns into the monthly check emergency function, the green indicator flash, the emergency time for 25-35 seconds, and automatically restores the main power condition. When the lamp is under the main power condition for 180 days (± 10 days), it automatically turns into the semi-annual check emergency function, green indicator accelerated flash, emergency time is not less than 30-35 minutes after the automatic restoration of the main power status. (if the emergency does not reach the emergency time, the yellow light will flash and report the fault.)

BATTERY CUT-OFF:

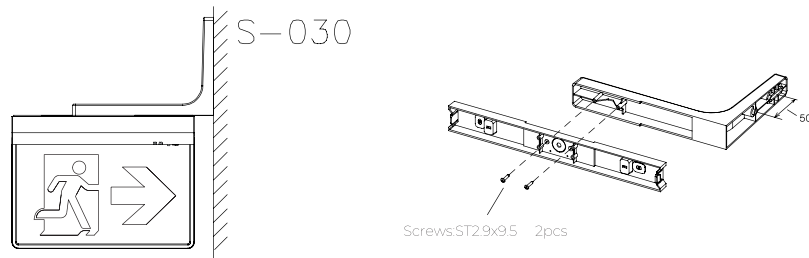
The luminaire enters in this operation when the mains power supply fails and battery has lost its energy. During this operation the luminaire enters the idle state and battery consumption is negligible, in order to be protected from over discharge.



OPTIONAL ACCESSORY:

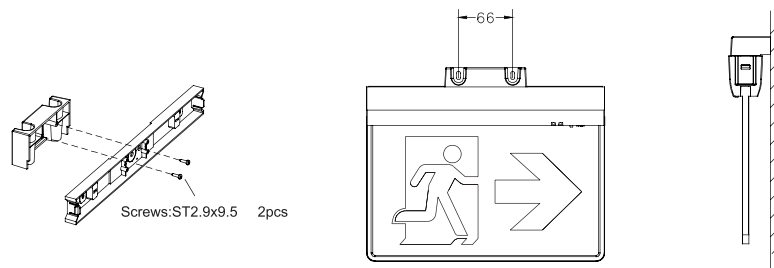
SIDE MOUNTING

LVE10009



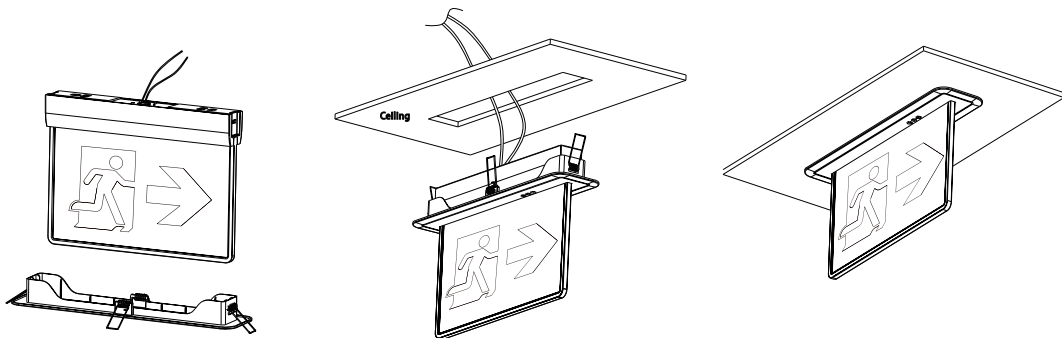
WALL MOUNTING

LVE10010



RECESSED MOUNTING

LVE10011



HANG MOUNTING

LVE10014

