

divaderme

P R O F E S S I O N A L S
C O S M E T I C S

Prochève



divaderme About The Company

Divaderme, renowned for luxurious 2-in-1 beauty products for more than 30 years, owes its innovative formulations to its founder, Noreen Leuzzi. As a self-proclaimed makeup fanatic, she suffered when using traditional chemical-laden formulations and set out to create all natural products with instant results and long-term benefits.

Thanks to a family team of visionaries, inventors, natural chemists, and professional artists, Divaderme's Italian formulations marry science with nature's most beneficial extracts to create prestigious formulations with unparalleled results. Today, Divaderme's entire line of products is infused with 100% natural skin-loving ingredients and contain absolutely no artificial or chemical ingredients. They are the perfect fusion of problem solvers and lavish treatments.

For more than three decades, Divaderme has satisfied the needs of those longing for radiant natural skincare, flawless makeup, lush lashes, perfectly sculpted eyebrows, and shimmering lips in a palette of chic European ultra-feminine colors and weightless textures. Divaderme's use of cellulose fibers to safely and naturally enhance the length and volume of lashes and brows continues to defy competition. And their unprecedented semi-permanent products offer extraordinary value for those seeking more than a temporary fix.

Unlike traditional cosmetic formulas, Divaderme products feature plant-based extracts to help repair skin, soothe irritation, enhance color, cover gray, reduce hair loss, and aid in healthy hair production. Italian terra sea mineral clays, Boswellia Serrata, and Rosmarinus Officinalis Extract are just a few of the coveted ingredients that make Divaderme the undeniable choice of the world's most discerning women.

Divaderme—effortless, luminous, timeless beauty.

divaderme
P R O F E S S I O N A L S
C O S M E T I C S

divaderme

LASH

EXTENDER **III**
FIBRE ZOOM 3D-FX

2-In-1 Natural 3D Length Peptide Infused
Fibers + Enhancer Treatment
LASHES

Lash out with our longest fibers for your most voluminous lashes! Maximize the length, thickness, and volume of your eyelashes while adding drama and diva definition to your eyes.

Sophisticated 2-in-1 formula contains stimulating peptides, natural nutrients, and conditioners that encourage strength and length. After two weeks' use, in-vitro clinical tests revealed a 25% increase in lash thickness and length. Achieve extraordinary results by simply applying these miraculous fibers in between coats of your favorite mascara.

PRODUCT FEATURES:

- Instantly lengthen and volumize lashes—up to 3 times longer.
- Create full, lush lashes without harsh chemicals or artificial ingredients.
- Instant gratification with long-term benefits and cutting-edge lash growth peptide technology.
- Safe for contact lens wearers.

NATURE'S PERFECT INGREDIENTS:

- Myristoyl Pentapeptide-17 stimulates the keratin genes. With continuous use, lashes get 25% longer and thicker.
- Cellulose plant-based fibers enhance length, thickness, and volume.
- Lecithin, Aloe Barbadensis, and Panthenol occur naturally in every living thing and improve dry or flaky skin, making it appear smooth and supple. Panthenol also enhances hair's body, sheen, and texture.
- Cynara Scolymus Extract, also known as Artichoke extract, provides natural pigmentation without chemicals or artificial colors.
- Tocopherol, similar to Vitamin E, conditions skin and helps keep follicles healthy and producing new growth.
- Panax Quinquefolius Extract, also known as American Ginseng, often has a firming effect when applied topically.
- Boswellia Serrata, the Indian version of frankincense, can both strengthen hair roots, reducing fallout, as well as improve shine and condition.
- Urticum Dioica Extract, also known as nettle, nourishes skin and aids in healthy hair production.
- Ocimum Basilicum Extract, also known as Sweet Basil Extract, potentially inhibits hair loss.
- Rosmarinus Officinalis Extract has antioxidant properties and can calm irritated skin.



divaderme

LASH

EXTENDER III
FIBRE ZOOM 3D-FX

2-In-1 Natural 3D Length Peptide Infused
Fibers + Enhancer Treatment
LASHES

DIRECTIONS:

- Step 1: Complete one eye at a time. Apply 1 coat of your favorite mascara.

- Step 2: While mascara is still wet, apply Lash Extender III Fibers to the tips of your lashes to achieve desired length and thickness. TIP: Tap off excess product before applying to lashes.

- Step 3: Reapply 1 or 2 coats of mascara to seal fibers and extend lashes. Repeat steps 1-3 for ultra-long lashes.



INGREDIENTS:

Myristoyl Pentapeptide-17 - is a keratin stimulating peptide shown to visibly increase eyelash length by 25 percent.
Cellulose, Panthenol, Cynara Scolymus Extract, Myristoyl Pentapeptide-17, Tocopherol, Lecithin, Panax Quinquefolius Extract,
Boswellia Serrata, Aloe Barbadensis, Urtica Dioica Extract, Ocimum Basilicum Extract, Rosmarinus Officinalis Extract.

divaderme
LASH II
EXTENDER II 2-In-1 Natural Fibers
+ Enhancer Treatment
LASHES

Divas don't settle for skimpy lashes. Get the look of false lashes without the glue.

Simply brush on tiny plant-based cellulose fibers in between coats of your favorite mascara, or use with Fiber Wings II Mascara for naturally glamorous results.

Lash Extender II is the only Natural Lash Fiber Enhancing Treatment formulated with natural moisturizers and skin-loving herbal extracts to specifically condition, strengthen, volumize, and enhance your lashes in just 4-6 weeks.

PRODUCT FEATURES:

- Instantly lengthen and volumize lashes up to 1000%.
- Create full, lush lashes without harsh chemicals or artificial ingredients.
- Instant gratification with long-term benefits all in one bottle.
- Safe for contact lens wearers.

NATURE'S PERFECT INGREDIENTS:

- Boswellia Serrata, the Indian version of frankincense, can both strengthen hair roots, reducing fallout, as well as improve shine and condition.
- Tocopherol, similar to Vitamin E, conditions skin and helps keep follicles healthy and producing new growth.
- Panax Quinquefolius Extract, also known as American Ginseng, often has a firming effect when applied topically.



BLACK ● WHITE ●

divaderme
LASH II
EXTENDER II

2-In-1 Natural Fibers
+ Enhancer Treatment
LASHES

DIRECTIONS:

Step 1: Complete one eye at a time. Apply 1 coat of your favorite mascara.

Step 2: While mascara is still wet, apply Lash Extender II Fibers to the tips of your lashes to achieve desired length and thickness. TIP: Tap off excess product before applying to lashes.

Step 3: Reapply 1 or 2 coats of mascara to seal fibers and extend lashes. Repeat steps 1-3 for ultra-long lashes.

- This product should not be used alone or on dry lashes.
- Use any makeup brush to remove stray fibers from face.
- Remove with any makeup remover.



INGREDIENTS:

Cellulose, Panthenol, Cynara Scolymus Extract, Tocopherol, Lecithin, Panax Quinquefolius Extract, Boswellia Serrata, Aloe Barbadensis, Urtica Dioica Extract, Ocimum Basilicum Extract, Rosmarinus Officinalis Extract.



BLACK ● WHITE ●

divaderme
FIBER II 2-In-1 Natural Fiber Mascara
WINGS MASCARA II + Argan Enhancer Treatment
LASHES

Short on time but want lush lashes? Fiber Wings II Mascara features natural cellulose fibers enriched with Argan oil. Experience the simplicity of dark, dramatic lashes that get healthier over time. With a single stroke, hundreds of tiny Argan enriched natural fibers adhere to your lashes, creating the longest, healthiest, most beautiful looking lashes instantly.

PRODUCT FEATURES:

- Fiber Wings II Mascara is a natural Argan Fiber Treatment Mascara.
- A single coat creates dramatic definition, length, thickness, and volume.
- Your 2-in-1 fix for instant results and long-term benefits.
- Active ingredients nourish, strengthen, and moisturize.
- Use with Lash Extender II for extreme diva drama.
- Natural cellulose fibers in deep rich mascara create instant length.
- Safe for contact lens wearers.

NATURE'S PERFECT INGREDIENTS:

- Argania Spinosa Kernel Oil, prized for its ability to promote hair growth and provide a beautiful sheen, conditions lashes with every stroke.
- Cera Alba, or beeswax, is rich in fatty acids and esters, which help keep lashes plump and healthy.
- Panthenol occurs naturally in every living thing and enhances body, sheen, and lash texture.
- Nucifera Extract, or lotus root, conditions and strengthens lashes while adding shine.
- Cynara Scolymus Leaf Extract, or artichoke extract, provides natural pigmentation without chemicals or artificial colors.

Keratin provides hydration and improves lash elasticity, which can result in less breakage.



divaderme
FIBERII 2-In-1 Natural Fiber Mascara
WINGS MASCARA II + Argan Enhancer Treatment
LASHES

DIRECTIONS:

- Step 1: Apply Fiber Wings II Mascara by placing the brush at the root of the lashes, wiggling slightly at the base, then sweeping upward and outward with the wand.
- Step 2: For a more dramatic effect, apply a second coat immediately before the first coat sets to avoid clumping.



INGREDIENTS:

Cellulose, Cera Alba, Cynara Scolymus Leaf Extract, Copernicia Cerifera Wax, Cocos Nucifera Extract, Argania Spinosa Kernel Oil, Panthenol, Kaolin, Urtica Dioica Extract, Rosmarinus Officinalis Extract, Keratin, Xanthan Gum, Glycerin.

divaderme

MASCARA DIVAFXII

2-In-1 Natural Peptide Enhanced Fibers
+ Argan Oil
EYES

Divas don't go down without a fight.

If your idea of aging gracefully means finding the best anti-aging products on the market, then cutting-edge Peptide Technology is a "must have" in your makeup arsenal.

Mascara Diva FX II is infused with Myristoyl Pentapeptide-17, a potent peptide and protein that attacks free radicals and protects and strengthens lashes in one step.

We've also incorporated hundreds of tiny plant-based fibers into our Argan Oil enriched formulation to give you the longest, healthiest, most beautiful looking lashes instantly!

PRODUCT FEATURES:

- Myristoyl Pentapeptide-17 stimulates the keratin genes. With continuous use, lashes get 25% longer and thicker.
- Natural plant-based fibers enhance length, thickness, and volume.
- Creates glam-on-the-glow lashes with treatment benefits in one simple step.
- Nourishing Argan Oil, Rose Damascena Flower Oil, and natural waxes condition and thicken lashes for a luxurious experience and impressive long-term results.
- Use with Lash Extender II for extreme diva drama.



divaderme

MASCARA DIVAFXII

2-In-1 Natural Peptide Enhanced Fibers
+ Argan Oil
EYES

NATURE'S PERFECT INGREDIENTS:

- Beeswax, or Cera Alba, is rich in fatty acids and esters, which help keep lashes plump and healthy.
- Artichoke extract, also known as Cynara Scolymus Leaf Extract, provides natural pigmentation without chemicals or artificial colors.
- Plant waxes, such as Copernicia Cerifera Wax, provide a creamy consistency, making mascara application smooth and effortless.
- Coconut Oil, or Cocos Nucifera Extract, provides deep conditioning and imparts a natural, glossy shine.
- Argania Spinosa Kernel Oil, prized for its ability to promote hair growth and provide a beautiful sheen, conditions lashes with every stroke.
- Panthenol occurs naturally in every living thing and enhances body, sheen, and lash texture.
- Urticum Dioica Extract, also known as nettle, nourishes skin and aids in healthy hair production.
- Cellulose fibers are plant-based and adhere to your lash tips, creating length and volume.
- Rosmarinus Officinalis Extract has antioxidant properties and can calm irritated skin.
- Keratin provides hydration and improves lash elasticity, which can result in less breakage.

DIRECTIONS:

Step 1: Remove wand from bottle and wipe excess product from the tip. Apply by placing the brush at the root of the lashes, wiggling slightly at the base, then sweeping upward and outward with the wand.

TIP: Complete one eye at a time.

Step 2: For a more dramatic effect, apply a second coat immediately before the first coat sets to avoid clumping.

INGREDIENTS:

Water/Aqua, Cera Alba, Cynara Scolymus Leaf Extract, Paraffin, Copernicia Cerifera Wax, Cocos Nucifera Extract, Argania Spinosa Kernel Oil, Panthenol, Kaolin, Urtica Dioica Extract, Cellulose, Myristoyl Pentapeptide-17, Rosmarinus Officinalis Extract, Keratin, Xanthan Gum, Glycerin, Rose Damascena Flower Oil.



divaderme
BROW II
EXTENDER II 2-In-1 Natural Brow Fibers
 + Enhancer Treatment
 BROWS



It's said your eyes are the "windows to your soul," so don't let barely there brows bring you down. Brow Extender II creates natural looking eyebrows while simultaneously treating the skin and hair with herbal extracts and natural moisturizers. The plant-based fibers and pigment-rich mineral clay stimulate, strengthen, and condition your brows in just 4 to 6 weeks.

PRODUCT FEATURES:

- Natural cellulose fibers create texture and dimension on even sparse or non-existent brows.
- Precisely fill in, color, and shape your brows in seconds. No template required.
- Semi-Permanent color derived from highly pigmented natural Italian Sea Mineral Clay looks natural, not harsh or drawn on.
- Covers gray hair completely.
- Great for men and women.
- Can even be used on side burns or to touch up gray roots.



- LIGHT BLONDE ●
- ASH BLONDE ●
- CAPPUCCINO BROWN ●
- CHOCOLATE BROWN ●
- ESPRESSO BROWN ●

divaderme
**BROW
EXTENDER II** 2-In-1 Natural Brow Fibers
+ Enhancer Treatment
BROWS



NATURE'S PERFECT INGREDIENTS:

- Lecithin, Aloe Barbadensis, and Panthenol occur naturally in every living thing and improve dry or flaky skin, making it appear smooth and supple. Panthenol also enhances hair's body, sheen, and texture.
- Cynara Scolymus Leaf Extract, or artichoke extract, provides natural pigmentation without chemicals or artificial colors.
- Tocopherol, similar to Vitamin E, conditions skin and helps keep follicles healthy and producing new growth.
- Panax Quinquefolius Extract, also known as American Ginseng, often has a firming effect when applied topically.
- Boswellia Serrata, the Indian version of frankincense, can both strengthen hair roots, reducing fallout, as well as improve shine and condition.
- Ocimum Basilicum Extract, also known as Sweet Basil Extract, potentially inhibits hair loss.
- Urticum Dioica Extract, also known as nettle, nourishes skin and aids in healthy hair production.
- Rosmarinus Officinalis Extract has antioxidant properties and can calm irritated skin.

DIRECTIONS:

Step 1: Apply while leaning toward your mirror or over your sink to keep excess fibers from settling onto your cheeks. Apply Brow Extender II to the brow area by brushing back and forth.

Step 2: Build, as necessary for full, beautiful brows.

- Use any makeup brush to remove stray fibers from face.



LIGHT BLONDE ●

ASH BLONDE ●

CAPPUCCINO BROWN ●

CHOCOLATE BROWN ●

ESPRESSO BROWN ●

divaderme
**BROW
FXII
TERRA**

2-In-1 Natural Terra De-Finer & Filler Enhancer Treatment BROWS

Tired of one-note brows that look drawn on instead of natural? Ready for semi-permanent color without the cost and maintenance of microblading? Trash those annoying brow templates and recreate the look of individual hairs for the most natural looking brows ever. Our Italian terra clay powder formula is chemical-free and incorporates centuries old formulations that provide instant results and long-term conditioning benefits. Whether you're longing for subtle strokes or bold definition, this wet/dry formula will help you achieve perfectly shaped full, thick brows that last all day.

PRODUCT FEATURES:

- 2-in-1 formula for customizable results.
- Create beautiful brows without harsh chemicals or artificial ingredients.
- Long lasting natural color even works on gray hair.
- Natural Italian terra sea mineral clays are infused with pure minerals and a fine blend of nourishing extracts to boost volume.
- Use dry for a soft, delicate finish or wet for precision detail.
- Safe for contact lens wearers.



TERRA ASH ● TERRA CAPPUCCINO ● TERRA ESPRESSO ●

divaderme
**BROW
FIX
TERRA**

2-In-1 Natural Terra De-Finer & Filler Enhancer Treatment BROWS

NATURE'S PERFECT INGREDIENTS:

- Panthenol, Lecithin, and Aloe Barbadensis occur naturally in every living thing and improve dry or flaky skin, making it appear smooth and supple. Panthenol also enhances hair's body, sheen, and texture.
- Kaolinite, a centuries-old terra clay powder rich in minerals, offers outstanding pigmentation without artificial ingredients.
- Tocopherol, like Vitamin E, conditions skin and helps keep follicles healthy and producing new growth.
- Panax Quinquefolius Extract, also known as American Ginseng, often has a firming effect when applied topically.
- Boswellia Serrata, the Indian version of frankincense, can both strengthen hair roots, reducing fallout, as well as improve shine and condition.
- Urticum Dioica Extract, also known as nettle, nourishes skin and aids in healthy hair production.
- Ocimum Basilicum Extract, also known as Sweet Basil Extract, potentially inhibits hair loss.
- Rosmarinus Officinalis Extract has antioxidant properties and can calm irritated skin.
- Troxerutin also possesses antioxidant properties as well as pigmentation.

DIRECTIONS:

DRY APPLICATION: Tap the fine-tipped applicator gently to knock off excess product. Fill in gaps with delicate strokes and blend to create perfectly shaped brows. This creates the most natural looking finish.

WET APPLICATION: Simply dip the applicator tip into a tiny bit of water for precision lining and deep detail. When used wet, you'll achieve a more concentrated line. Important note: When using wet, always make sure to thoroughly dry the tip on a clean lint-free towel before putting it back into the bottle. This will maintain your product's original consistency.

INGREDIENTS:

Panthenol, Kaolinite, Tocopherol, Lecithin, Panax Quinquefolius Extract, Boswellia Serrata, Aloe Barbadensis, Urtica Dioica Extract, Ocimum Basilicum Extract, Rosmarinus Officinalis Extract, Troxerutin.

TERRA ASH ●

TERRA CAPPUCCINO ●

TERRA ESPRESSO ●



divaderme

FXII DE-FINER GEL

2-In-1 Natural Brow & Lash De-Finer Gel Conditioning Treatment BROWS & LASHES

If the “no-makeup makeup” look appeals to you, then a subtle hint of shine and color is the order of the day. Treat your lashes and brows with an all-natural tinted formula that delivers beautiful understated results with vitamins and herbal extracts for long-term benefits. Our De-Finer Gel sets brows in place with a simple stroke and adds sheer color and shine to lashes for a healthy “unmade-up” look in just 60 seconds.

PRODUCT FEATURES:

- Precious herbal extracts and natural sea mineral clay care for your brows and lashes while providing a hint of color to emphasize your beautiful eyes.
- Lightweight, non-sticky formula glides on effortlessly.
- Long-lasting formula stimulates volume and keeps brows and lashes in place all day.
- Precision short-bristled wand defines evenly for a natural appearance.
- Can even be worn under mascara as a treatment without clumping.
- Safe and gentle enough for sensitive eyes and contact lens wearers.



divaderme

FXII DE-FINER GEL

2-In-1 Natural Brow & Lash
De-Finer Gel Conditioning Treatment
BROWS & LASHES

NATURE'S PERFECT INGREDIENTS:

- Panthenol, Lecithin, and Aloe Barbadensis occur naturally in every living thing and improve dry or flaky skin, making it appear smooth and supple. Panthenol also enhances hair's body, sheen, and texture.
- Kaolinite, a centuries-old terra clay powder rich in minerals, offers outstanding pigmentation without artificial ingredients.
- Tocopherol, like Vitamin E, conditions skin and helps keep follicles healthy and producing new growth.
- Panax Quinquefolius Extract, also known as American Ginseng, often has a firming effect when applied topically.
- Boswellia Serrata, the Indian version of frankincense, can both strengthen hair roots, reducing fallout, as well as improve shine and condition.
- Urticum Dioica Extract, also known as nettle, nourishes skin and aids in healthy hair production.
- Ocimum Basilicum Extract, also known as Sweet Basil Extract, potentially inhibits hair loss.
- Rosmarinus Officinalis Extract has antioxidant properties and can calm irritated skin.
- Troxerutin also possesses antioxidant properties as well as pigmentation.

DIRECTIONS:

Brush onto eyebrows or eyelashes, as desired.

INGREDIENTS:

Aqua, Panthenol, Kaolinite, Tocopherol, Lecithin, Panax Quinquefolius Extract, Boswellia Serrata, Aloe Barbadensis, Urtica Dioica Extract, Ocimum Basilicum Extract, Rosmarinus Officinalis Extract, Troxerutin.



divaderme
PRECISION LINER FXII 2-In-1 Natural Semi Permanent Color
BROWS & EYES

Busy divas need not worry. Get showstopping brows and beautifully lined eyes all in one bottle. Perfect that brow, its arch and fullness, and define your eyes with the same all natural skin loving formula—without chemicals or harsh ingredients. This long-wearing product sets quickly and defies smudging once dry.

PRODUCT FEATURES:

- Defines arches and eyes like a pro.
- Precision felt applicator tip allows you to recreate missing hairs and rock amazing winged liner (even as a beginner).
- Create thin or thick strokes without skipping or pulling.
- Rich pigment delivers professional results for all day wear.
- Quick-dry formula glides on and sets in less than 60 seconds.
- Smudge- and water-resistant once dry.
- Use alone or as a base to extend your brow's staying power.

Safe and gentle enough for sensitive eyes and contact lens wearers



ASH FX ● CAPPUCCINO FX ● ESPRESSO BLACK FX ●

divaderme PRECISION LINER FXII

2-In-1 Natural Semi Permanent Color BROWS & EYES

NATURE'S PERFECT INGREDIENTS:

- Panthenol, Lecithin, and Aloe Barbadensis occur naturally in every living thing and improve dry or flaky skin, making it appear smooth and supple. Panthenol also enhances hair's body, sheen, and texture.
- Kaolinite, a centuries-old terra clay powder rich in minerals, offers outstanding pigmentation without artificial ingredients.
- Tocopherol, like Vitamin E, conditions skin and helps keep follicles healthy and producing new growth.
- Panax Quinquefolius Extract, also known as American Ginseng, often has a firming effect when applied topically.
- Boswellia Serrata, the Indian version of frankincense, can both strengthen hair roots, reducing fallout, as well as improve shine and condition.
- Urticum Dioica Extract, also known as nettle, nourishes skin and aids in healthy hair production.
- Ocimum Basilicum Extract, also known as Sweet Basil Extract, potentially inhibits hair loss.
- Rosmarinus Officinalis Extract has antioxidant properties and can calm irritated skin.

DIRECTIONS:

FOR BEST RESULTS: Shake closed bottle thoroughly to activate natural color, then remove applicator wand and wipe against a soft, lint-free cloth until the tip is almost dry. This prevents bleeding and ensures a precise application.

Step 1: Apply where needed with careful strokes to fill in sparse brows or to define and shape your eyes and brows.

INGREDIENTS:

Aqua, Panthenol, Kaolinite, Tocopherol, Lecithin, Panax Quinquefolius Extract, Boswellia Serrata, Aloe Barbadensis, Urtica Dioica Extract, Ocimum Basilicum Extract, Rosmarinus Officinalis Extract.



ASH FX ● CAPPUCCINO FX ● ESPRESSO BLACK FX ●

divaderme

BOND SERUM PEPTIDE FX

Lash & Brow Extension Serum
+ Natural Bond Peptides
LASHES & BROWS

You condition your hair. Why not your lashes and brows? Bond Serum Peptide FX is a natural highly concentrated herbal serum infused with two different forms of peptides that are proven to improve hair fullness. With daily use, lash and brow volume, texture, and density are improved in just 3-6 weeks.

Achieve professional results in your own home with specially selected natural ingredients that revitalize, condition, and improve overall hair health. Stimulates your lashes and brows right at the root to promote dramatic results.

PRODUCT FEATURES:

- Cutting edge ingredients provide long-term benefits.
- No chemicals or harsh additives.
- Easy-to-use one-step formula.
- Proven lash and brow improvement in just 3-6 weeks.

NATURE'S PERFECT INGREDIENTS:

- Myristoyl Pentapeptide-17 and Myristoyl Hexapeptide-16 stimulate the keratin genes. With continuous use, lashes get 25% longer and thicker.
- Tocopherol, like Vitamin E, conditions skin and helps keep follicles healthy and producing new growth.
- Aloe Barbadensis and Lecithin occur naturally in every living thing and improve dry or flaky skin, making it appear smooth and supple.
- Panax Quinquefolius Extract, also known as American Ginseng, often has a firming effect when applied topically.
- Cera Carnauba is rich in fatty acids and esters, which help keep lashes plump and healthy.
- Boswellia Serrata, the Indian version of frankincense, can both strengthen hair roots, reducing fallout, as well as improve shine and condition.
- Urticum Dioica Extract, also known as nettle, nourishes skin and aids in healthy hair production.
- Ocimum Basilicum Extract, also known as Sweet Basil Extract, potentially inhibits hair loss.
- Rosmarinus Officinalis Extract has antioxidant properties and can calm irritated skin.



divaderme

BOND SERUM PEPTIDE FX II

Lash & Brow Extension Serum
+ Natural Bond Peptides
LASHES & BROWS

DIRECTIONS FOR LASHES:

Step 1: Wash and dry eye area completely prior to application.

Step 2: Apply a thin layer at the edge of your upper and lower lash lines (as though you were applying eyeliner).
May be used morning or night.

DIRECTIONS FOR BROWS:

Step 1: Thoroughly clean the brow area prior to application.

Step 2: Apply directly onto your natural brow area and let dry.

TIPS:

- Only use a small amount of this concentrated formula.
- If using makeup remover, be sure to completely wash away all residue prior to application.
- Use daily to maintain the appearance and condition of your lashes.
- For best results and added brow benefits, apply twice daily.
- Allow serum to dry before applying makeup.
- Best results are achieved when used with a natural mascara.

INGREDIENTS:

Myristoyl pentapeptide 17, Myristoyl hexapeptide 16
Tocopherol, Lecithin, Panax Quinquefolius Extract, Cera Carnauba, Boswellia Serrata, Aloe Barbadensis, Urtica Dioica Extract,
Ocimum Basilicum Extract, Rosmarinus Officinalis Extract.



divaderme PRECISION LINER FXII

Natural Liquid Semi-Permanent Precision Liner LIPS

Tired of hard, dry lip liner pencils that skip, smudge, and drag during application then disappear in no time? Divaderme's liquid liners love your lips and apply effortlessly, even if you're a beginner. Plus, natural herbal extracts help hydrate your lips without harsh chemicals or aggravating ingredients.

PRODUCT FEATURES:

- Long lasting, smudge-proof all-day wear.
- Precision felt applicator tip for subtle lining or bold, dramatic strokes for full, sensuous lips.
- No skipping, smudging, or tugging.
- No chemicals or harsh additives.
- Easy-to-use formula.



ROSSO FX ● WINE FX ● TERRACOTTA FX ●

divaderme
PRECISION LINER FXII Natural Liquid Semi-Permanent Precision Liner
 LIPS

NATURE'S PERFECT INGREDIENTS:

- Lecithin, Aloe Barbadensis, and Panthenol occur naturally in every living thing and improve dry or flaky skin, making it appear smooth and supple. Panthenol also enhances hair's body, sheen, and texture.
- Kaolinite, a centuries-old terra clay powder rich in minerals, offers outstanding pigmentation without artificial ingredients.
- Tocopherol, like Vitamin E, conditions skin.
- Panax Quinquefolius Extract, also known as American Ginseng, often has a firming effect when applied topically.
- Boswellia Serrata, the Indian version of frankincense, helps tone skin and reduce the appearance of fine lines and wrinkles.
- Urticum Dioica Extract, also known as nettle, nourishes skin and aids in healthy hair production.
- Ocimum Basilicum Extract, also known as Sweet Basil Extract, potentially inhibits hair loss.
- Rosmarinus Officinalis Extract has antioxidant properties and can calm irritated skin.

DIRECTIONS:

FOR BEST RESULTS: Shake closed bottle thoroughly to activate natural color, then remove applicator wand and wipe against a soft, lint-free cloth until the tip is almost dry. This prevents bleeding and ensures a precise application.

Step 1: Apply on top of or just outside your natural lip line

INGREDIENTS:

Aqua, Panthenol, Kaolinite, Tocopherol, Lecithin, Panax Quinquefolius Extract, Boswellia Serrata, Aloe Barbadensis, Urtica Dioica Extract, Ocimum Basilicum Extract, Rosmarinus Officinalis Extract.



ROSSO FX ● WINE FX ● TERRACOTTA FX ●

divaderme

VACATION II IN A BOTTLE II

2-In-1 Semi-Permanent Natural Color + Anti-Aging Serum

SKIN CARE

Sun exposure is the quickest way to age your skin, but you can achieve that healthy glow in less than 60 seconds—without the damaging UV rays. 100% plant-based liquid makeup does more than just give you a kiss of instant color. It delivers powerful antioxidants and skin-loving extracts to power your anti-aging routine.

Look like you've been on vacation for weeks!

PRODUCT FEATURES:

- Radiant, healthy-looking skin in less than 60 seconds.
- 100% natural semi-permanent color.
- Anti-aging and skin repairing technology.
- SPF 15.
- Dries instantly without the stickiness or unpleasant chemical scent of traditional self-tanning products.
- Transfer-proof color that lasts all day.
- Perfect for all skin types.
- Great for women and men.



divaderme

VACATION II IN A BOTTLE II

2-In-1 Semi-Permanent Natural Color + Anti-Aging Serum SKIN CARE

NATURE'S PERFECT INGREDIENTS:

- Coconut Oil, or Cocos Nucifera Extract, provides deep conditioning and imparts a natural, glossy shine.
- Daucus Carota Sativa and Vaccinium Myrtillus Extracts possess anti-aging and antioxidant properties to protect skin from free radicals.
- Prunus Cerasus Extract, Elaeis Guineensis Extract, and Citrus Grandi Extract condition and tighten loose or sagging skin.
- Green Tea Leaf, or Camelia Sinensis Extract, offers a host of benefits, including the ability to improve skin's elasticity and reduce inflammation.
- Boswellia Serrata, the Indian version of frankincense, helps tone skin and reduce the appearance of fine lines and wrinkles.
- Oenothera Biennis Extract, also known as Evening Primrose Oil, helps improve skin's moisture barrier and has healing benefits even for sensitive skin.
- Persea Gratissima Extract comes from avocados and can moisturize, heal, and soothe skin irritation thanks to its fatty acids.
- Ascorbic Acid is a powerful antioxidant with the ability to reverse skin damage and help stimulate collagen production for firmer, toned, healthy skin.
- Tocopherol, like Vitamin E, conditions skin.

DIRECTIONS:

FOR BEST RESULTS: Please read instructions carefully before using, keeping in mind that a little goes a long way.

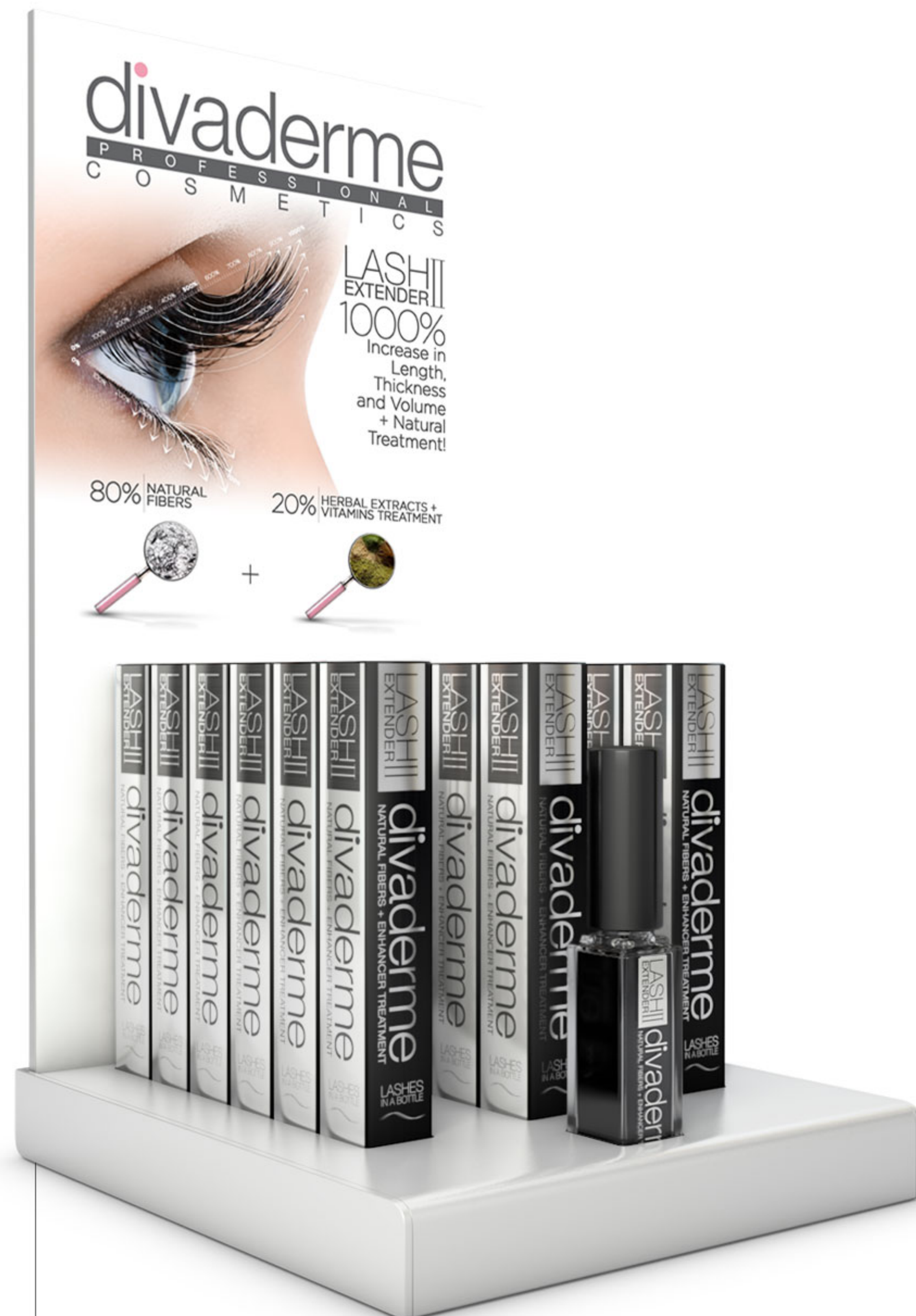
Step 1: Spray liquid onto the round applicator sponge or a foundation brush. Lightly pat VACATION II color onto cheeks, forehead, chin, nose, and décolleté. Reapply as needed for soft, healthy looking skin that glows from within.

INGREDIENTS:

Cocos Nucifera Extract, Daucus Carota Sativa Extract, Vaccinium Myrtillus Extract, Prunus Cerasus Extract, Camelia Sinensis Extract, Boswellia Serrata Extract, Elaeis Guineensis Extract, Citrus Grandi Extract, Oenothera Biennis Extract, Persea Gratissima Extract, Ascorbic Acid, Tocopherol.



divaderme Beautiful Merchandising Displays



**LASH II
EXTENDER II**
DISPLAY 18 UNITS + 1 TESTER



**BROW II
EXTENDER II**
DISPLAY 18 UNITS + 3 TESTERS



**FIBER II
WINGS MASCARA II**
DISPLAY 18 UNITS + 1 TESTER

divaderme

Beautiful Merchandising Displays



FXII DE-FINER GEL

DISPLAY 18 UNITS + 1 TESTER



BROW FXII TERRA

DISPLAY 18 UNITS + 3 TESTERS



PRECISION LINER FXII

DISPLAY 18 UNITS + 3 TESTERS

divaderme

Beautiful Merchandising Displays



VACATION II
IN A BOTTLE II
DISPLAY 12 UNITS

divaderme

All Natural Made in  USA

Our Commitment To Excellence



OPHTHALMOLOGIST
APPROVED



CRUELTY
FREE



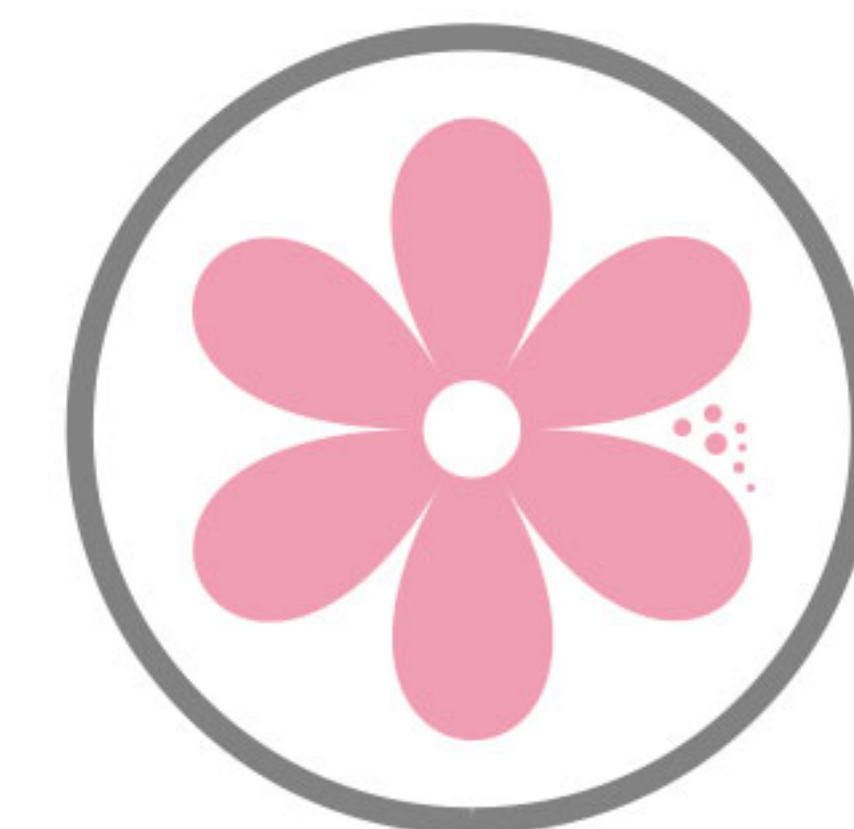
DERMATOLOGIST
APPROVED



PARABEN FREE



GLUTEN FREE



HYPOALLERGENIC

AS SEEN ON



MAGAZINE

FEATURED ARTICLES



COSMOPOLITAN
MARIE CLAIRE
GLAMOUR
ALLURE
VOGUE
ELLE

divaderme
P R O F E S S I O N A L
C O S M E T I C S
W W W . D I V A D E R M E . C O M

Tel. 888.618.0370 • Fax 888.210.3552 or 305.947.6232 • divadermecosmetics@icloud.com
2058 NE 153 ST. • NORTH MIAMI BEACH • FL • 33162 • USA