

WHAT TO DO WITH THE ASHES?

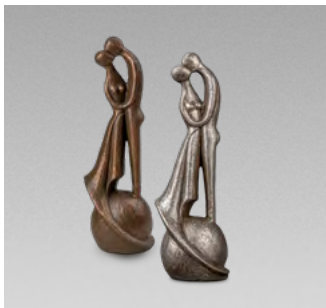


DISPLAY

A popular choice is to keep the ashes, or an amount of your loved one's ashes nearby in an urn. The size, material and design can vary quite a bit. Besides the more traditional designs, we are seeing more and more families choose a more modern design, to make a stunning feature in their home or garden.

Popular ideas are:

- On the mantelpiece
- In the bedroom
- As a centrepiece in the living room
- As a garden monument
- In miniature keepsake urns
- In memorial jewellery



BURIAL

You can bury the ashes within the grounds of the local crematorium or cemetery, creating a special place to visit. By choosing for a biodegradable urn, you opt to return the cremated remains back to nature. Furthermore, back gardens have become a popular location for many as well, being able to keep a loved one in a private setting. Popular choices include:

- In a churchyard
- In the grounds of the crematorium
- In a memorial garden
- Within a family plot
- In the sea
- In your own back garden



SHARING

A popular option within close families is to share the ashes, or some of the ashes between family members so that everyone can select their own personal memento. This way, each family member can choose how to retain the ashes for themselves. Popular ideas are:

- In miniature keepsake urns
- In memorial jewellery
- Scattering them at a personal location



CLOSE BY

You can also consider to choose for memorial jewellery. Giving you the chance to keep your loved one close by, wherever you go. Nowadays, the modern jewellery is focussed more on detail and design, causing them to be unrecognisable as containers for cremated remains.

Popular choices are:

- Memorial jewellery with fingerprint
- Memorial jewellery that is complementary to the urn
- Pendants
- Beads
- Rings





OUR PROMISE FOR QUALITY

Premium-quality remembrance items,
made under fair working conditions
by skilled craftsmen

Visit our website for the entire collection:

uk.funeralproducts.eu

**Ask your funeral director for
further advice on any of the
options outlined in this leaflet.**

