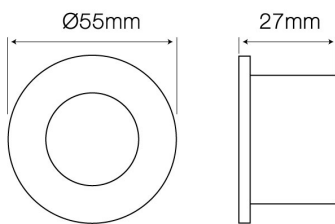
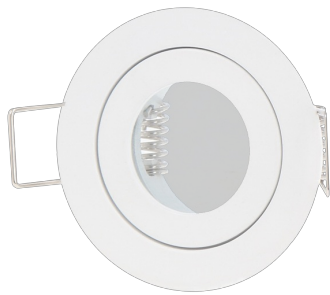


Product code: 249266 EAN: 5901583249266

## LED line® downlight waterproof MR11 round white

### Product description

Product coated with a matt paint finish which gives aesthetic appearance. Manufacturer issues a 5-year warranty for this product. This product is featured by a high degree of IP protection, which makes it suitable for a broader range of lighting applications and offers high safety of use.



Manufacturer issues a 5-year warranty for this product.



This product is featured by a high degree of IP protection, which makes it suitable for a broader range of lighting applications and offers high safety of use.



Maximum suitable lamp power



Material (housing)



Distance from illuminated surface



IEC protection class



Product coated with a matt paint finish which gives aesthetic appearance.



Material (cover)



Type of surface suitable for installation



Mounting hole diameter

Name of the parameter	Value
Maximum suitable lamp power	35
Warranty (years)	5
Colour	white
Fixture's diameter	55
Lamp's diameter	35
Material (cover)	clear glass
Material (housing)	DIE-CAST zinc
Painting technique	Powder coated
Finish	matt
Type of surface suitable for installation	F
Distance from illuminated surface	0.5 m
Installation method	recessed

Name of the parameter	Value
Mounting hole diameter	45 mm
For indoor and outdoor use	YES
IEC protection class	III
Luminaire (bottom) IP protection rating	44
Full box quantity	100 pc
Luminaire (upper) IP protection rating	20
Height	27 mm
Master carton weight (kg)	10
Product code	249266
GPC classification	10005633 - Bulb sockets
Status	Active (on sale)
Net content of the product	1
GSI unit	szt

**Pre-packaging**



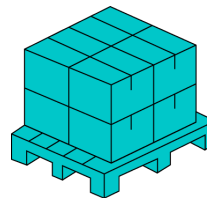
Width [mm]	<b>66</b>
Height [mm]	<b>42</b>
Length [mm]	<b>66</b>
Weight [kg]	<b>0,1</b>

**Cumulative packaging**



Number of pieces	<b>100</b>
Width [mm]	<b>350</b>
Height [mm]	<b>285</b>
Length [mm]	<b>225</b>
Weight [kg]	<b>10</b>
Volume [m3]	<b>0,02244375</b>

**Europallet**



Number of pieces	<b>5500</b>
Bulk quantity	<b>55</b>
Weight [kg]	<b>550</b>
Weight [kg]	<b>550</b>
Pallet height [mm]	<b>1800</b>
Quantity in 1 layer	<b>11</b>
Number of layers	<b>5</b>