

MODULAR SYSTEM FOR ELECTRIC ACTUATORS



Electric quarter turn actuators series E 65 - E 210 with modular system are designed to automate control valves.

TECHNICAL DATA

| | |
|-----------------------------|--|
| Nominal torque: | 100 Nm to 4000 Nm |
| Protection class: | IP67 |
| Duty cycle: | up to Class C (max. 1200 c/n) acc. to prEN 15714-2 |
| Limit switches: | max. 250V AC, 3A |
| Torque control: | directional contact, max. 250V AC 5A |
| Switch box heater: | supply 230V AC permanently, 5W |
| Potentiometer: | 1000 Ω |
| Current feedback: | 4-20mA, supply max. 30V DC |
| Thermal motor switch: | integrated |
| Insulation class: | F |
| Corrosion protection Class: | C4 acc. to prEN 15714-2, tested acc. to EN 60068-2-52 |
| Cable entries: | 4 x M20 x 1,5 \varnothing -min = 6 mm \varnothing -max = 13 mm |
| Operation temperature: | -20°C to +70°C |
| Hand wheel: | 15 revolutions 90° |
| Hand wheel Torque: | 4 Nm for E65 20 Nm for E110 35 Nm for E160 50 Nm for E210 |
| Supply voltage: | from 110V AC/1~ to 480V AC/3~ |

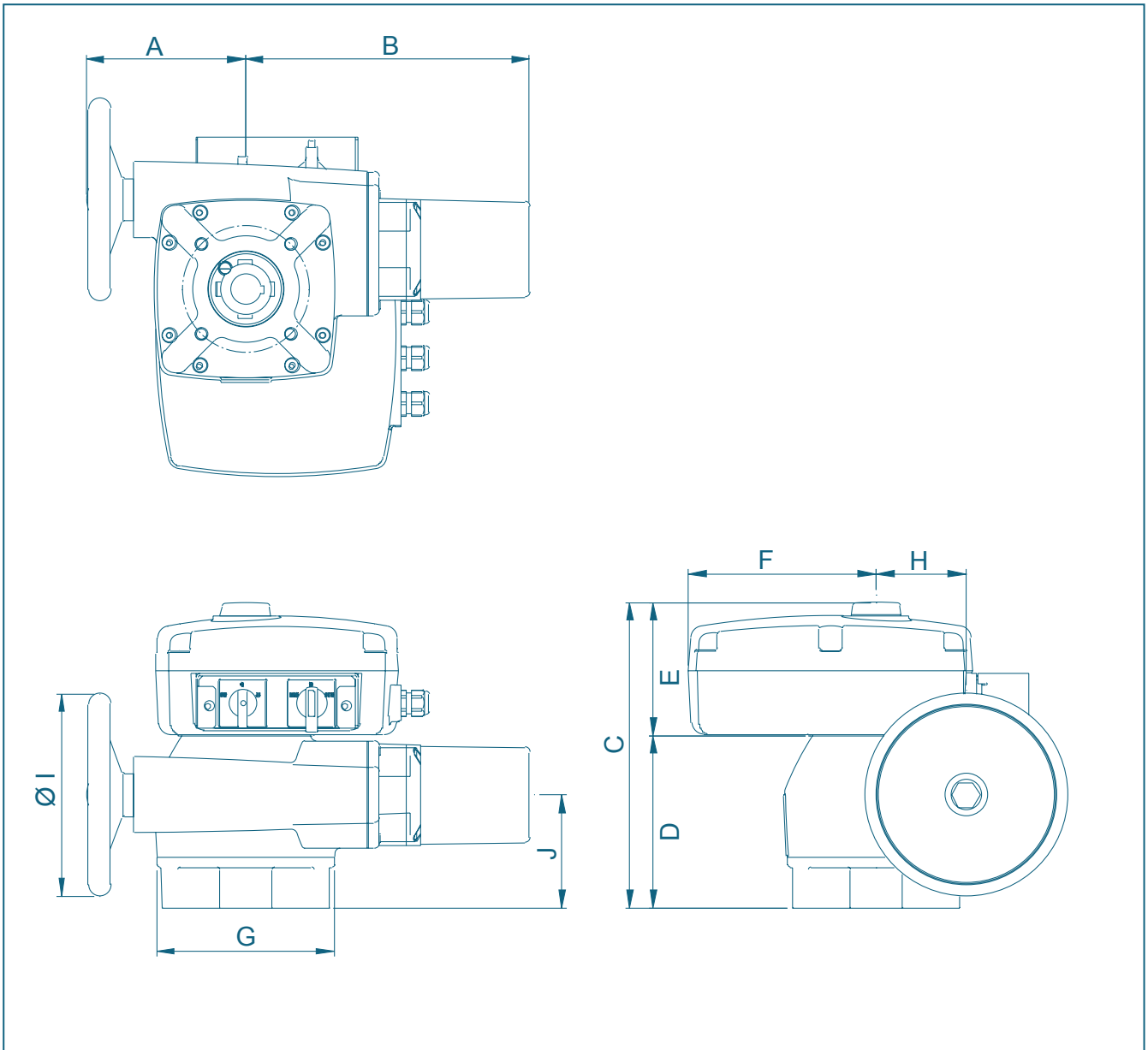
GENERAL APPLICATIONS

- Integrated torque control
- Digital control input
- Integrated 24V DC control voltage supply
- 5 digital feedback signals
- Switch box heater
- Prepared for further options
- Actuator mounting and optional modules as modular system
- Self-locking, separately capsuled worm gear ensures a safe positioning of the actuating element
- Top flange acc. to EN ISO 5211
- Replaceable shaft notch enables the adaption of different valves
- The optical position indicator shows the exact position of the actuating element



Complete equipment with additional board for positioner.

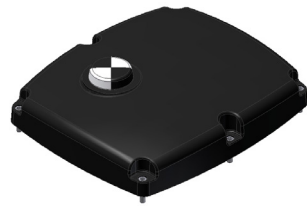
DIMENSIONS MODULAR SYSTEM



| Type | Dimensions [mm] | | | | | | | | | Top flange |
|-------|-----------------|-----|-----|-----|-----|-----|-----|-----|-----|---------------|
| | A | B | C | D | E | G | H | ØI | J | |
| E 65 | 119 | 171 | 255 | 123 | 132 | 125 | 42 | 80 | 78 | F04, F05, F07 |
| E 110 | 136 | 247 | 277 | 145 | 132 | 150 | 58 | 125 | 88 | F07, F10 |
| E 160 | 157 | 280 | 302 | 170 | 132 | 175 | 89 | 200 | 112 | F10, F12, F16 |
| E 210 | 212 | 352 | 294 | 162 | 132 | 240 | 125 | 315 | 84 | F12, F14, F16 |

Subject to change without notice

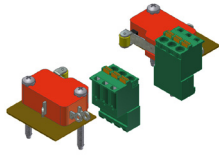
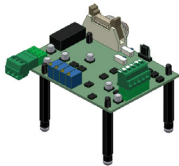
MODULAR MOUNTING



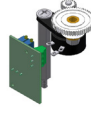
Body (upper part)



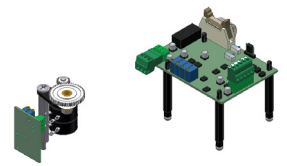
Positioner



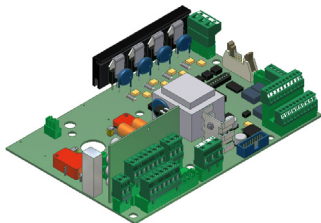
Additional limit switches



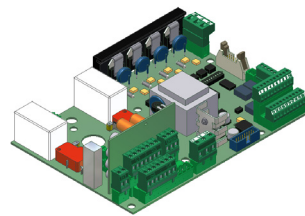
Current feedback



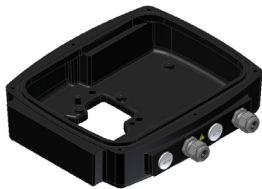
Current feedback + Positioner



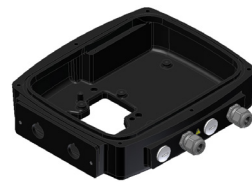
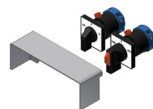
Main board three phase AC



Main board AC



Body (lower part)



Body (lower part) with local control



E 65



E 110



E 160



E 210

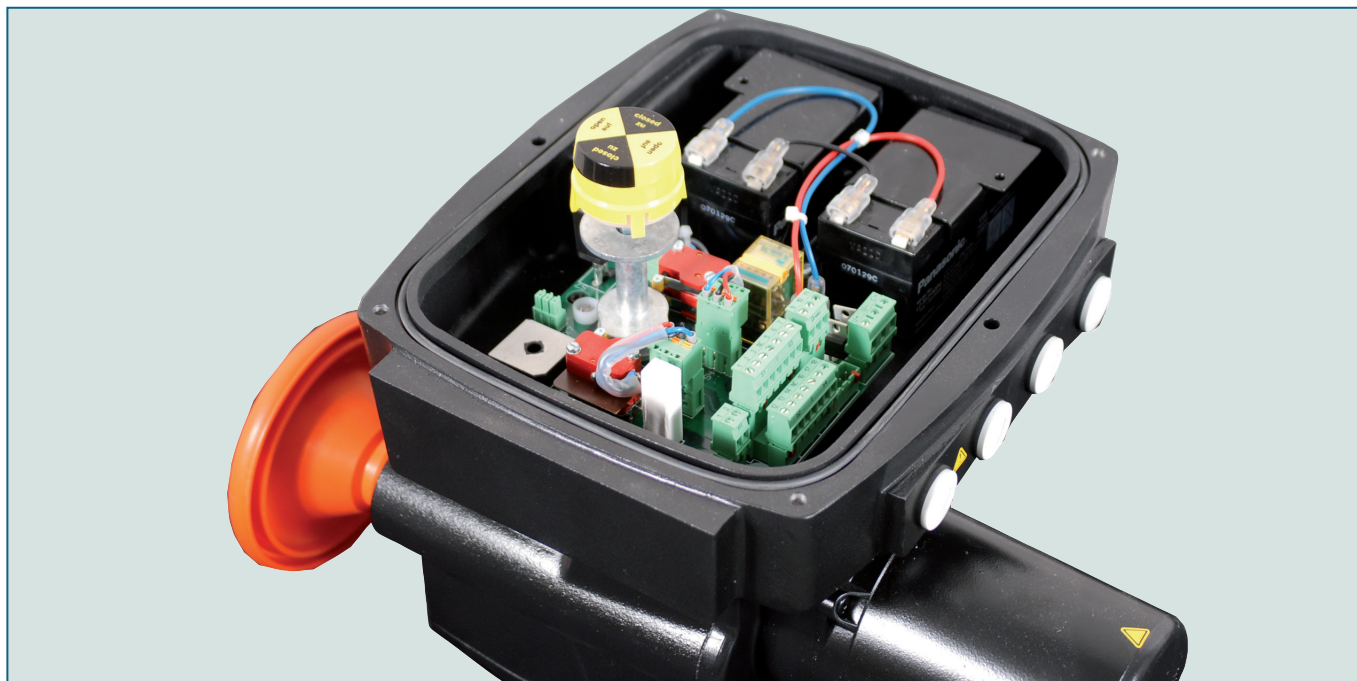
ORDER CODES

| Order Code | | Standard | | | Options | | | |
|---------------------|---------------------|----------------------------|-------------------------------------|---------------------|---------------------------------|-------------------------------|------------------|--------------------------|
| | | Main Board PI.E71-Local | Digital remote control inputs | Digital feedback | Additional Limit Switches | Current Feedback 4-20mA | Local control | Positioner PI.E71-POS |
| Alternating Current | Three-Phase Current | | | | | | | |
| M71-WS-001-40 | M71-DS-001-40 | X | X | X | | | | |
| M71-WS-002-40 | M71-DS-002-40 | X | X | X | X | | | |
| M71-WS-003-40 | M71-DS-003-40 | X | X | X | | X | | |
| M71-WS-004-40 | M71-DS-004-40 | X | X | X | | | X | |
| M71-WS-005-40 | M71-DS-005-40 | X | X | X | X | X | | |
| M71-WS-006-40 | M71-DS-006-40 | X | X | X | | X | X | |
| M71-WS-007-40 | M71-DS-007-40 | X | X | X | X | | X | |
| M71-WS-008-40 | M71-DS-008-40 | X | X | X | X | X | X | |
| M71-WS-009-40 | M71-DS-009-40 | X | | X | | | | X* |
| M71-WS-010-40 | M71-DS-010-40 | X | | X | X | | | X* |
| M71-WS-011-40 | M71-DS-011-40 | X | | X | | X | | X* |
| M71-WS-012-40 | M71-DS-012-40 | X | | X | | | X | X* |
| M71-WS-013-40 | M71-DS-013-40 | X | | X | X | X | | X* |
| M71-WS-014-40 | M71-DS-014-40 | X | | X | | X | X | X* |
| M71-WS-015-40 | M71-DS-015-40 | X | | X | X | | X | X* |
| M71-WS-016-40 | M71-DS-016-40 | X | | X | X | X | X | X* |

* If a positioner is installed, remote control information is disconnected

Actuators with fail-safe position OPEN/CLOSE

| Direct Current | | | | |
|----------------|-----------|--|---|---|
| M71-GS-100-40 | PI.E71-GS | | X | without additional power charge unit for battery pack |
| M71-GS-200-40 | PI.E71-GS | | X | with additional power charge unit for battery pack |



This version provides a safety position in case of power loss.