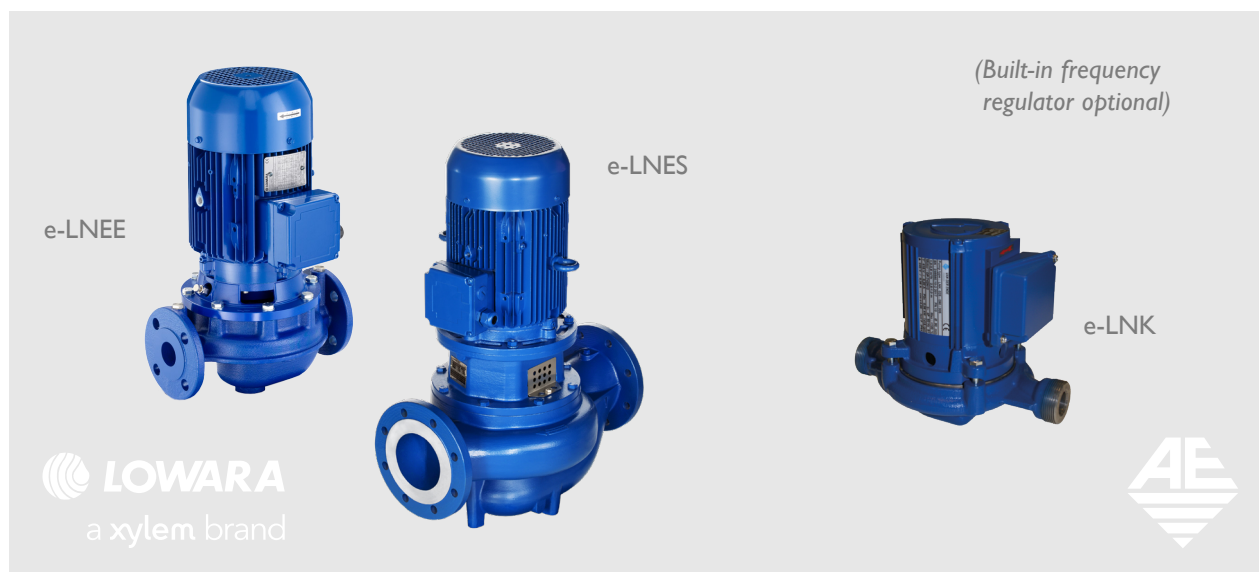


Inline circulation pumps

LOWARA e-LNEE, e-LNES, e-LNK

Cast iron pumps



Description

The e-LNE series is a series of cast iron inline circulation pumps designed for applications involving hot and cold water circulation in heating, ventilating and air-conditioning systems. The pumps satisfy the MEI 0.4 index and the IE3 standard.

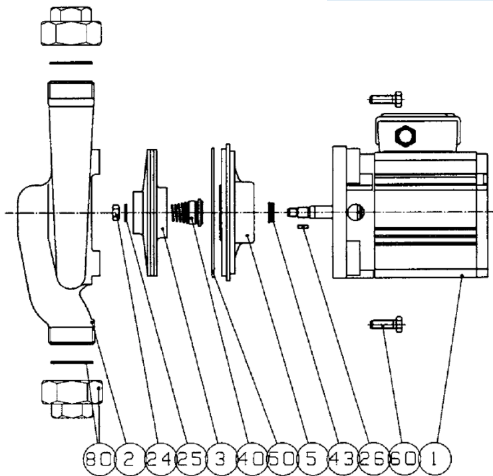
- e-LNK = close-coupled model with a threaded connection
- e-LNEE = close-coupled model
- e-LNES = model with a standard motor and a stub shaft

Applications

- o heating systems
- o cooling systems
- o air-conditioning systems
- o water supply
- o industrial washing machines
- o swimming pools

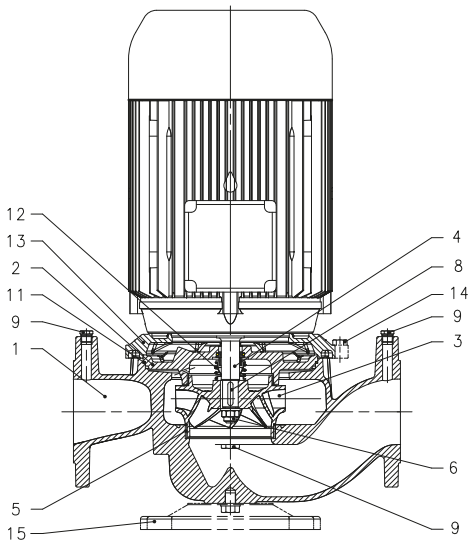
Specifications

- o suitable for water, clean liquids and continuous use
- o body: cast iron
- o impeller: stainless steel, cast iron or bronze (optional)
- o capacity: up to 900 m³/h
- o head: up to 95 m
- o maximum pressure: 16 bar
- o liquid temperature: -25°C to +140°C
- o asynchronous motor IE3 or higher
- o insulation class: F
- o protection class: IP55
- o threaded connection: G1" (DN25) and G1 1/4" (DN32)
- o flange connection: DN32 - DN250
- o motor supply P2: up to 90 kW
- o power supply:
 - single phase 220-240 Volt 50 Hz with overcurrent protection (up to 2.2 kW)
 - 3-phase 220-240/380-415 Volt (up to 3.0 kW)
 - 3-phase 380-415/660-690 Volt
 - other voltages available on request
- o available in 2, 4 and 6-pole models
- o frequencies: 50 Hz and 60 Hz
- o Available for the North American market on request (cURus)



LNK

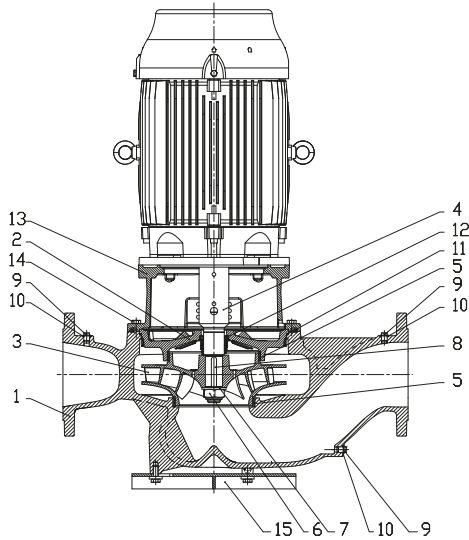
	PART	MATERIAL	REFERENCE STANDARD
1	Electric motor		
2	Volute casing	Cast Iron	EN-GJL-200
3	Impeller	Plastic	Noryl GFN2
5	Casing cover	Cast Iron	EN-GJL-200
24	Impeller lock nut	Bronze	
25	Impeller washer	Stainless steel	
26	Stub shaft and impeller key	Stainless steel	AISI 329
40	Mechanical seal	Carbon/Silicon carbide/ EPDM	
43	Seal	NBR	
50	O-ring	NBR	
60	Volute casing fastening bolts and screws	Carbon steel	
80	Pipe connections	Carbon steel	



LNEE

	PART	MATERIAL	REFERENCE STANDARD
1	Volute casing	Cast iron	EN 1561 - GJL-250 (JL1040)
2	Casing cover	Cast iron	EN 1561 - GJL-250 (JL1040)
3	Impeller (40, 50, 65)	Stainless steel	EN 10088-1-X2CrNiMo17-12-2 (1.4404)
	Impeller (80, 100)	Cast iron	EN 1561 - GJL-250 (JL1040)
	Impeller (80, 100)	Bronze	EN 1982 - CuSn10-C (CC480K)
4	Stub shaft	Stainless steel	EN 10088-1-X2CrNiMo17-12-2 (1.4404)
5	Wear ring	Stainless steel	EN 10088-X5CrNi18-10 (1.4301)
6	Impeller lock nut and washer	Stainless steel	EN 10088-1-X5CrNiMo17-12-2 (1.4401)
8	Impeller key	Stainless steel	EN 10088-1-X2CrNiMo17-12-2 (1.4404)
9	Fill and drain plugs	Nickel-plated brass	EN 12164-CuZn39Pb3 (CW614N)
11	O-ring	EPDM (standard version)	
12	Mechanical seal	Carbon/Silicon carbide/ EPDM (standard version)	
13	Motor adapter*	Aluminium	EN 1706-AC-AISI11Cu2 (Fe) (AC46100)
	Motor adapter*	Cast iron	EN 1561 - GJL-250 (JL1040)
14	Volute casing fastening bolts and screws	Carbon steel	
15	Pump base (optional)	Carbon steel	EN 10025-2 - 1.0038

*2/4 pole: 40/50/65-125, 40/50-160



LNES

PART	MATERIAL	REFERENCE STANDARD
1	Volute casing	Cast iron EN 1561 - GJL-250 (JL1040)
2	Casing cover	Cast iron EN 1561 - GJL-250 (JL1040)
3	Impeller (40, 50, 65)	Stainless steel EN 10088-1-X2CrNiMo17-12-2 (1.4404)
	Impeller (80, 100)	Cast iron EN 1561 - GJL-250 (JL1040)
	Impeller (80, 100)	Bronze EN 1982 - CuSn10-C (CC480K)
4	Stub shaft	Stainless steel EN 10088-1-X2CrNiMo17-12-2 (1.4404)
	Stub shaft (80-250, 100-200, 100-250, 125, 150)	Stainless steel EN 10088-X17CrNi16-2 (1.4057)
5	Wear ring	Stainless steel EN 10088-X5CrNi18-10 (1.4301)
6	Impeller lock nut	Stainless steel EN 10088-1-X5CrNiMo17-12-2 (1.4401)
7	Impeller washer	Stainless steel EN 10088-1-X5CrNiMo17-12-2 (1.4401)
8	Impeller key	Stainless steel EN 10088-X6CrNiMo17-12-2 (1.4571)
9	Plug	Stainless steel EN 10088-X6CrNiMo17-12-2 (1.4571)
10	Gasket	Asbestos-free synthetic fiber AFM 34
11	O-ring	EPDM (standard version)
12	Mechanical seal	Carbon/Silicon carbide/ EPDM (standard version)
13	Motor adapter*	Aluminium EN 1706-AC-ALSi11Cu2 (Fe) (AC46100)
	Motor adapter*	Cast iron EN 1561 - GJL-250 (JL1040)
14	Volute casing fastening bolts and screws	Carbon steel
15	Pump base (optional)	Carbon steel EN 10025-2 - 1.0038

*2/4 pole: 40/50/65-125, 40/50-160