

Which tender for your boat?

Choosing the perfect tender for your boat and the kind of sailing you expect to be undertaking, is an essential part of your preparation. There are many points to consider: length and capacity of course, but also the size of the storage bag, overall weight, floor type, etc.
With 21 models to choose, the worldwide market leader is sure to have the perfect solution to suit your programme.

Choose the right tender

In order to choose the right tender, it is necessary to ask yourself some important questions. This small guide should help you.

HOW WOULD YOU LIKE TO STORE YOUR TENDER ON BOARD?



WHICH TYPE OF FLOOR ARE YOU LOOKING FOR?



WOULD YOU LIKE A VERY LIGHT WEIGHT TENDER?



WHICH KIND OF FABRIC ARE YOU LOOKING FOR?



STRONGAN™
• Regular use
• Welded tube seams by thermobonding



HYPALON™
• Hypalon™-Neoprene™
• Intensive use
• Permanent exposure to UV rays in tropical zone

2 | CHOOSE THE RIGHT TENDER

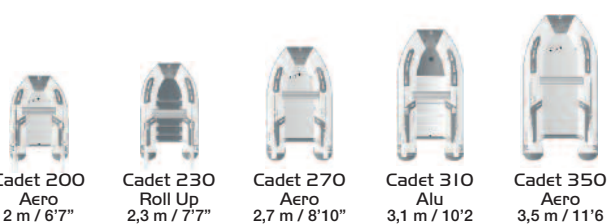
Cadet An exceptional quality/price ratio

New

At the origin, the best materials were selected with internal welded tube seams by thermobonding for an optimal durability. The equipment is plethoric and of quality without considering most the Zodiac® patented touch, such as the system of rowlock or the internal command of the self bailor. The whole set has an incomparable style, nothing surprising, it is a Zodiac® tender.



- Different types of floors: slatted, inflatable or aluminium
- Truncated cones
- Thwart/seat and carrying bag included as standard



Cadet 200 Aero 2 m / 6'7"
Cadet 230 Roll Up 2,3 m / 7'7"
Cadet 270 Aero 2,7 m / 8'10"
Cadet 310 Alu 3,1 m / 10'2"
Cadet 350 Aero 3,5 m / 11'6"

3 | FOLDABLE

Cadet 200 Aero Inflatable floor



Cadet 270 Roll Up Slatted floor



Cadet 310 Aero Inflatable floor



Cadet 350 Alu Aluminium floor



	TYPES OF FLOORS		
	ROLL UP	AERO	ALU
Cadet 200	•	•	
Cadet 230	•	•	
Cadet 270	•	•	•
Cadet 310	•	•	•
Cadet 350		•	•



Cadet fastroller Light weight, high performance

Equipped with the patented "Acti-V all inflatable floor" Zodiac® concept, the Cadet Fastroller, easy to install, offers greater comfort in navigation and provides exceptional performance.



- Large diameter buoyancy tube: + stability
- Choice of fabric: Strongan™
- Inflatable V-hull



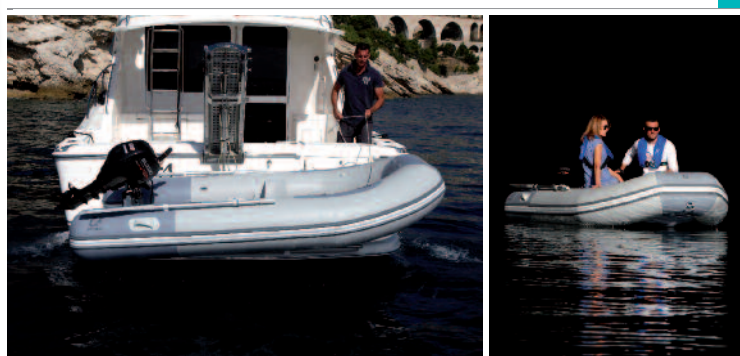
Cadet Fastroller 285 Acti-V 2,85 m / 9'4"
Cadet Fastroller 325 Acti-V 3,25 m / 10'8"
Cadet Fastroller 360 Acti-V 3,6 m / 11'1"

4 | FOLDABLE

Cadet Fastroller 285 Acti-V



Cadet Fastroller 360

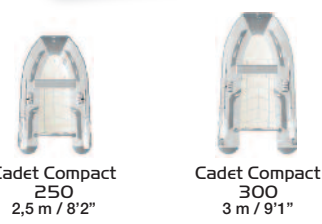


Cadet compact A rib in one bag

Thanks to its exclusive folding down transom, the Cadet Compact, once deflated, takes up very little space and is easy to store.



- Choice of fabric: Strongan™ or Hypalon™-Neoprene™
- RIMTEC polyester hull: low maintenance
- Available in white on Hypalon™-Neoprene™ fabric versions



Cadet Compact 250 2,5 m / 8'2"
Cadet Compact 300 3 m / 9'1"

5 | RIB WITH FOLDING DOWN TRANSCOM



Cadet Compact 250



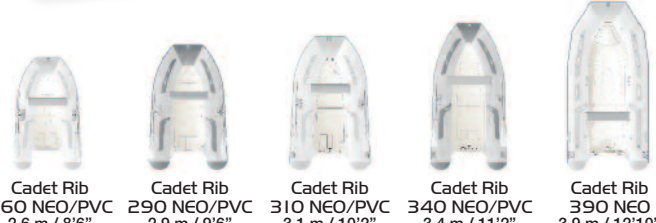
Cadet Compact

Cadet Rib Elegance and sturdiness

Generous by their interior dimensions, quality of the components used and built to last, the Cadet Rib will provide your boat with elegance.



- Large diameter buoyancy tube: + stability
- Choice of fabric: Strongan™ or Hypalon™-Neoprene™
- Generous seating: great comfort of use
- Available in white on Hypalon™-Neoprene™ fabric versions



Cadet Rib 260 NEO/PVC 2,6 m / 8'6"
Cadet Rib 290 NEO/PVC 2,9 m / 9'6"
Cadet Rib 310 NEO/PVC 3,1 m / 10'2"
Cadet Rib 340 NEO/PVC 3,4 m / 11'2"
Cadet Rib 390 NEO 3,9 m / 12'10"

6 | RIB

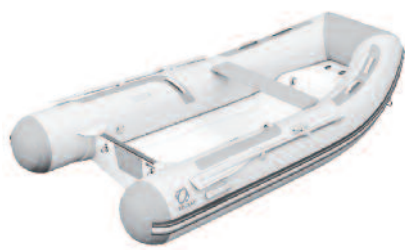
TYPE OF FABRICS AND COLOURS AVAILABLE

Cadet Rib 260	Neo	<input type="radio"/>	<input type="radio"/>
	PVC	<input type="radio"/>	<input type="radio"/>
Cadet Rib 290	Neo	<input type="radio"/>	<input type="radio"/>
	PVC	<input type="radio"/>	<input type="radio"/>
Cadet Rib 310	Neo	<input type="radio"/>	<input type="radio"/>
	PVC	<input type="radio"/>	<input type="radio"/>
Cadet Rib 340	Neo	<input type="radio"/>	<input type="radio"/>
	PVC	<input type="radio"/>	<input type="radio"/>
Cadet Rib 390	Neo	<input type="radio"/>	<input type="radio"/>

Cadet Rib 290 PVC



Cadet Rib 340 NEO



Accessories

In order for you to customize your boat, we have designed Access, a complete range of accessories specially adapted to Zodiac® tenders. Feel free to ask your dealer for advice.



Z61111 Cleaner for boats



Z1180 Inflatable thwart grey 0,70 m (Cadet Roll Up / Solid except Cadet 340 Solid / Aero / Fastroller 285 Acti-V)
Z1181 Inflatable thwart grey 0,78 m (Cadet 340 Solid / Fastroller 325 et 360 Acti-V)



Z1052 Bathing ladder (Cadet Roll Up / Solid / Aero / Fastroller / Compact)



Z1186 Fishing rod holder (Cadet Roll Up / Solid / Aero / Fastroller / Compact)



Z1236 Lifting sling kit (Cadet Fastroller)



Z1423 High volume electric inflator 12V 240mb (except Cadet Aero / Fastroller)
Z60801 High volume electric inflator 12V 800 mb (Cadet Aero / Fastroller)



Z61161 Launching wheels (Cadet Roll Up / Solid / Aero / Fastroller / Compact)



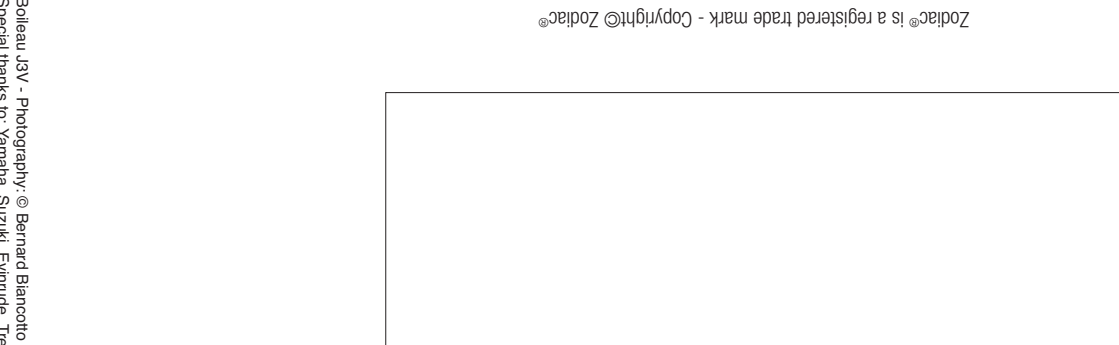
Z1253 Bow bag (Cadet Roll Up / Solid / Aero / Fastroller)



Z1269 Underset Bench bag (Cadet Roll Up / Solid / Aero / Fastroller / Compact)

7 | ACCESSORIES

Zodiac® is a registered trade mark - Copyright© Zodiac®



Boiteau 43V - Photography: © Bernard Blancotto - © Studio Lezard Graphique. Special thanks to: Yamahia, Suzuki, Evinrude, Teesso, Natureland, Algje, Servaux.

WWW.ZODIAC-NAUTIC.COM

ZODIAC





TENDERS



Coaster ISO 9650 *Light - Compact - Cost-efficient*

Compact and lightweight, the Coaster ISO 9650 belong to the **Type 2** category, ie they are suitable for coastal sailing, in moderate sea conditions.



Model	Persons capacity	Compartments	Dimensions	Container		Valise	
				Dimensions	Weight	Dimensions	Weight
Coaster ISO 9650 4P	4	2	144 x 144 cm	69 x 49 x 23 cm	33 kg	67 x 45 x 22 cm	30 kg
Coaster ISO 9650 6P	6	2	179 x 179 cm	69 x 49 x 23 cm	37 kg	67 x 45 x 22 cm	34 kg
Coaster ISO 9650 8P	8	2	198 x 198 cm	76 x 49 x 29 cm	42 kg	72 x 45 x 26 cm	38 kg

Open Sea ISO 9650 *Compact - Complete and upgradeable equipment - Easy boarding*

Open Sea ISO 9650 rafts belong to the **Type 1** category, ie they are designed for sailing on the open sea, and are thus adapted to the risks incurred on long voyages (high winds and heavy seas).



Model	Persons capacity	Compartments	Dimensions	Container		Valise		Grab bag weight
				Dimensions	Weight	Dimensions	Weight	
Open Sea ISO 9650 4P	4	3	164 x 164 cm	69 x 49 x 23 cm	38 kg	67 x 45 x 22 cm	35.5 kg	9.1 kg
Open Sea ISO 9650 6P	6	3	229 x 168 cm	76 x 49 x 29 cm	45 kg	72 x 45 x 26 cm	42 kg	12.9 kg
Open Sea ISO 9650 8P	8	3	248 x 201 cm	80 x 53 x 32 cm	53 kg	78 x 50 x 27 cm	49 kg	15.5 kg
Open Sea ISO 9650 10P	10	3	304 x 263 cm	80 x 53 x 32 cm	58 kg	78 x 50 x 27 cm	54 kg	18.7 kg

Sail 275 *Lifejackets*

ZODIAC® NAUTIC strongly recommends the wearing of life jackets during the sailing, and, without exception, for children and non-swimmers.

Mainly dedicated to the sailing on the open sea, the Sail 275 jacket is equipped with an integral **safety harness** with a loop and a stainless steel D-ring which allows to attach a **safety lifeline**. It is equipped with a "man to man line". It allows to the boaters who do fall into the water to stay all together even in difficult sea conditions, while help arrives.



Z64003 Sail 275 Lifejackets



10 | LIFEJACKETS

Cruiser 150 *Lifejackets*

ZODIAC® NAUTIC strongly recommends the wearing of life jackets during the sailing, and, without exception, for children and non-swimmers.

Light and versatile jacket, the Cruiser 150 is particularly adapted for family cruising and is suitable for both **coastal and open sea sailing**. **Comfort and safety** are the key features of this life jacket.



Z64004 Cruiser 150 Lifejackets



11 | LIFEJACKETS

Technical specifications

	CADET ROLL UP			CADET AERO					CADET ALU		
	200	230	270	200	230	270	310	350	270	310	350
DIMENSIONS (metres - feet/inches)											
Overall length	2,00 - 6'7"	2,30 - 7'7"	2,70 - 8'10"	2,00 - 6'7"	2,30 - 7'7"	2,70 - 8'10"	3,10 - 10'2"	3,50 - 11'6"	2,70 - 8'10"	3,10 - 10'2"	3,50 - 11'6"
Inside length	1,26 - 4'2"	1,44 - 4'9"	1,75 - 5'9"	1,26 - 4'2"	1,44 - 4'9"	1,75 - 5'9"	2,20 - 7'3"	2,58 - 8'6"	1,75 - 5'9"	2,20 - 7'3"	2,58 - 8'6"
Overall width	1,34 - 4'5"	1,34 - 4'5"	1,53 - 5'0"	1,34 - 4'5"	1,34 - 4'5"	1,53 - 5'0"	1,55 - 5'1"	1,72 - 5'8"	1,53 - 5'0"	1,55 - 5'1"	1,72 - 5'8"
Inside width	0,62 - 2'0"	0,62 - 2'0"	0,68 - 2'3"	0,62 - 2'0"	0,62 - 2'0"	0,68 - 2'3"	0,68 - 2'3"	0,83 - 2'9"	0,68 - 2'3"	0,68 - 2'3"	0,83 - 2'9"
Buoyancy tube diameter	0,36 - 1'2"	0,36 - 1'2"	0,43 - 1'5"	0,36 - 1'2"	0,36 - 1'2"	0,43 - 1'5"	0,44 - 1'5"	0,45 - 1'6"	0,43 - 1'5"	0,44 - 1'5"	0,45 - 1'6"
CAPACITY											
Passengers (ISO)	2	3	3+1	2	3	3+1	5	6	3+1	5	6
Maximum payload ⁽¹⁾ (kg - lbs)	180/396	270/595	370/816	210/463	300/662	420/926	570/1257	620/1367	450/992	600/1323	650/1433
Total weight ⁽²⁾ (kg - lbs)	20/44	22/49	29/64	20/44	24/53	31/68	35/77	42/93	37/82	40/88	67/148
Air/night compartments	2	2	3	2+1	2+1+1	3+1+1	3+1+1	3+1+1	3+1	3+1	3+1
DESIGN CATEGORY											
European directive N° 94/25/CE	-	-	D	-	-	D	C	C	D	C	C
OUTBOARD DATA											
Shaft: ● Short ■ Long	●	●	●	●	●	●	●	●	●	●	●
Maximum power allowed ⁽³⁾ (Hp)	3	4	4	3	4	6	10	15	8	15	20
Maximum power allowed ⁽⁴⁾ (kW)	2,3	3	3	2,3	3	4,5	8	12	6	12	15
Maximum weight of outboard ⁽⁵⁾ (kg - lbs)	18/40	27/60	27/60	18/40	27/60	27/60	52/115	55/121	42/93	55/121	55/121
DIMENSIONS OF THE FOLDED BOAT (metres - feet/inches)											
Length of 1 st bag	0,98 - 3'3"	0,98 - 3'3"	1,1 - 3'7"	0,97 - 3'2"	1 - 3'3"	1,09 - 3'7"	1,14 - 3'9"	1,2 - 3'11"	1,03 - 3'5"	1,05 - 3'5"	1,24 - 3'11"
Width of 1 st bag	0,54 - 1'9"	0,51 - 1'8"	0,5 - 1'8"	0,42 - 1'5"	0,57 - 1'10"	0,52 - 1'8"	0,59 - 1'11"	0,64 - 2'1"	0,62 - 2'	0,63 - 2'1"	0,6 - 1'12"
Height of 1 st bag	0,27 - 0'113"	0,3 - 0'12"	0,37 - 1'3"	0,28 - 0'11"	0,29 - 0'11"	0,32 - 1'1"	0,23 - 0'9"	0,3 - 0'12"	0,34 - 1'1"	0,35 - 1'2"	0,3 - 0'12"
HULL DIMENSIONS (metres - feet/inches)											
Length of the hull	-	-	-	-	-	-	-	-	-	-	-
Width of the hull	-	-	-	-	-	-	-	-	-	-	-
Height of the hull	-	-	-	-	-	-	-	-	-	-	-

12 | TECHNICAL SPECIFICATIONS

Technical specifications

	CADET FASTROLLER PVC			CADET COMPACT PVC & NEO		CADET RIB PVC & NEO				CADET RIB NEO
	285	325	360	250	300	260	290	310	340	390
DIMENSIONS (metres - feet/inches)										
Overall length	2,85 - 9'4"	3,25 - 10'8"	3,6 - 11'10"	2,5 - 8'2"	3 - 9'10"	2,6 - 8'6"	2,9 - 9'6"	3,1 - 10'2"	3,4 - 11'2"	3,90 - 12'10"
Inside length	1,91 - 6'3"	2,29 - 7'6"	2,67 - 8'9"	1,62 - 5'4"	2,02 - 6'8"	1,72 - 5'8"	1,95 - 6'5"	2,20 - 7'3"	2,48 - 8'2"	2,90 - 9'6"
Overall width	1,68 - 5'6"	1,68 - 5'6"	1,74 - 5'9"	1,56 - 5'1"	1,56 - 5'1"	1,56 - 5'1"	1,56 - 5'1"	1,72 - 5'8"	1,72 - 5'8"	1,90 - 6'3"
Inside width	0,78 - 2'7"	0,78 - 2'7"	0,84 - 2'9"	0,70 - 2'4"	0,70 - 2'4"	0,70 - 2'4"	0,70 - 2'4"	0,80 - 2'8"	0,80 - 2'8"	0,95 - 3'1"
Buoyancy tube diameter	0,45 - 1'6"	0,45 - 1'6"	0,45 - 1'6"	0,42 - 1'5"	0,42 - 1'5"	0,42 - 1'5"	0,42 - 1'5"	0,45 - 1'6"	0,45 - 1'6"	0,455 - 1'6"
CAPACITY										
Passengers (ISO)	4	5	6	3	4	3	4	5	5+1	7
Maximum payload ⁽¹⁾ (kg - lbs)	450 - 992	490 - 1080	750 - 1653	380 - 838	450 - 992	400 - 881	450 - 992	480 - 1058	610 - 1344	780 - 1719
Total weight in PVC version ⁽²⁾ (kg - lbs)	35 - 77	38 - 84	44 - 97	38 - 83	48 - 105	52 - 114	71 - 157	87 - 191	93 - 205	-
Total weight in NEO version ⁽³⁾ (kg - lbs)	-	-	-	40 - 88	50 - 110	54 - 119	75 - 165	91 - 201	97 - 214	181 - 399
Air/night compartments	2+1	3+1	3+1	2	2	3	3	3	3	3
DESIGN CATEGORY										
European directive N° 94/25/CE	D	C	C	D	C	D	D	C	C	C
OUTBOARD DATA										
Shaft: ● Short ■ Long	●	●	●	●	●	●	●	●	●	■
Maximum power allowed ⁽⁴⁾ (Hp)	8	10	15	8	10	10	15	20	25	50
Maximum power allowed ⁽⁵⁾ (kW)	6	8	12	6	8	8	11	15	18	37
Maximum weight of outboard ⁽⁶⁾ (kg - lbs)	42 - 93	52 - 115	55 - 121	42 - 93	52 - 115	52 - 115	55 - 121	60 - 132	72 - 159	115 - 254
DIMENSIONS OF THE FOLDED BOAT (metres - feet/inches)										
Length of 1 st bag	1,15 - 3'9"	1,15 - 3'9"	1,2 - 3'11"	-	-	-	-	-	-	-
Width of 1 st bag	0,6 - 1'12"	0,6 - 1'12"	0,65 - 2'2"	-	-	-	-	-	-	-
Height of 1 st bag	0,35 - 1'2"	0,4 - 1'4"	0,4 - 1'4"	-	-	-	-	-	-	-
HULL DIMENSIONS (metres - feet/inches)										
Length of the hull	-	-	-	1,76 - 5'9"	2,16 - 7'1"	2,15 - 7'1"	2,40 - 7'11"	2,70 - 8'10"	3 - 9'1"	3,63 - 11'11"
Width of the hull	-	-	-	0,9 - 2'11"	0,9 - 2'11"	1 - 3'3"	1,05 - 3'5"	1,13 - 3'9"	1,24 - 4'1"	1,24 - 4'1"
Height of the hull	-	-	-	0,3 - 1'1"	0,3 - 1'1"	0,45 - 1'6"	0,45 - 1'6"	0,45 - 1'6"	0,59 - 1'11"	0,69 - 3'3"

13 | TECHNICAL SPECIFICATIONS

ENGINES
 Indicated measurements may vary by +/- 3%, or +/- 5% for weight and speed measurements.
 (1) Maximum permitted load is calculated using ISO standards. Caution is advised when operating fully laden boats.
 (2) Recommended power is based on optimal use of the boat's abilities under average load. Depending on use, choose either maximum waterskiing or minimum power (fishing, cruising).
 (3) The manufacturer's plate specifies maximum permitted power. The power of your boat must not exceed this under any circumstances.
 (4) Maximum permitted weight: dry weight, according to motormanufacturers' catalogue specifications.
 (5) Maximum speeds are intended as a guide only, they were measured in ideal conditions by professional pilots with one person aboard. They may vary according to make of motor, boat load, propeller type and water conditions.
 (6) Models in this catalogue are sometimes shown with optional accessories. Please check standard equipment supplied with each model and see your Zodiac®Nautic Dealer for any additional information.
 This document cannot be considered as a contractual document.
 Zodiac® Nautic continually strives to improve the quality of its products and as such reserves the right to modify or delete any model presented in this catalogue without prior notice and modify or improve the conception or definition of its products at any time, without any prior notification and no retroactive effect on the boats built previously.
 The boats photographed in this catalogue may have undergone changes. Such references are for identification only, and are not intended to be an endorsement.
 This document cannot be considered as a contractual document.
 Zodiac® Nautic continually strives to improve the quality of its products and as such reserves the right to modify or delete any model presented in this catalogue without prior notice and modify or improve the conception or definition of its products at any time, without any prior notification and no retroactive effect on the boats built previously.
 The boats photographed in this catalogue may have undergone changes. Such references are for identification only, and are not intended to be an endorsement.
 This document cannot be considered as a contractual document.
 Zodiac® Nautic continually strives to improve the quality of its products and as such reserves the right to modify or delete any model presented in this catalogue without prior notice and modify or improve the conception or definition of its products at any time, without any prior notification and no retroactive effect on the boats built previously.
 The boats photographed in this catalogue may have undergone changes. Such references are for identification only, and are not intended to be an endorsement.
 This document cannot be considered as a contractual document.
 Zodiac® Nautic continually strives to improve the quality of its products and as such reserves the right to modify or delete any model presented in this catalogue without prior notice and modify or improve the conception or definition of its products at any time, without any prior notification and no retroactive effect on the boats built previously.
 The boats photographed in this catalogue may have undergone changes. Such references are for identification only, and are not intended to be an endorsement.
 This document cannot be considered as a contractual document.
 Zodiac® Nautic continually strives to improve the quality of its products and as such reserves the right to modify or delete any model presented in this catalogue without prior notice and modify or improve the conception or definition of its products at any time, without any prior notification and no retroactive effect on the boats built previously.
 The boats photographed in this catalogue may have undergone changes. Such references are for identification only, and are not intended to be an endorsement.
 This document cannot be considered as a contractual document.
 Zodiac® Nautic continually strives to improve the quality of its products and as such reserves the right to modify or delete any model presented in this catalogue without prior notice and modify or improve the conception or definition of its products at any time, without any prior notification and no retroactive effect on the boats built previously.
 The boats photographed in this catalogue may have undergone changes. Such references are for identification only, and are not intended to be an endorsement.
 This document cannot be considered as a contractual document.
 Zodiac® Nautic continually strives to improve the quality of its products and as such reserves the right to modify or delete any model presented in this catalogue without prior notice and modify or improve the conception or definition of its products at any time, without any prior notification and no retroactive effect on the boats built previously.
 The boats photographed in this catalogue may have undergone changes. Such references are for identification only, and are not intended to be an endorsement.
 This document cannot be considered as a contractual document.
 Zodiac® Nautic continually strives to improve the quality of its products and as such reserves the right to modify or delete any model presented in this catalogue without prior notice and modify or improve the conception or definition of its products at any time, without any prior notification and no retroactive effect on the boats built previously.
 The boats photographed in this catalogue may have undergone changes. Such references are for identification only, and are not intended to be an endorsement.
 This document cannot be considered as a contractual document.
 Zodiac® Nautic continually strives to improve the quality of its products and as such reserves the right to modify or delete any model presented in this catalogue without prior notice and modify or improve the conception or definition of its products at any time, without any prior notification and no retroactive effect on the boats built previously.
 The boats photographed in this catalogue may have undergone changes. Such references are for identification only, and are not intended to be an endorsement.
 This document cannot be considered as a contractual document.
 Zodiac® Nautic continually strives to improve the quality of its products and as such reserves the right to modify or delete any model presented in this catalogue without prior notice and modify or improve the conception or definition of its products at any time, without any prior notification and no retroactive effect on the boats built previously.
 The boats photographed in this catalogue may have undergone changes. Such references are for identification only, and are not intended to be an endorsement.
 This document cannot be considered as a contractual document.
 Zodiac® Nautic continually strives to improve the quality of its products and as such reserves the right to modify or delete any model presented in this catalogue without prior notice and modify or improve the conception or definition of its products at any time, without any prior notification and no retroactive effect on the boats built previously.
 The boats photographed in this catalogue may have undergone changes. Such references are for identification only, and are not intended to be an endorsement.
 This document cannot be considered as a contractual document.
 Zodiac® Nautic continually strives to improve the quality of its products and as such reserves the right to modify or delete any model presented in this catalogue without prior notice and modify or improve the conception or definition of its products at any time, without any prior notification and no retroactive effect on the boats built previously.
 The boats photographed in this catalogue may have undergone changes. Such references are for identification only, and are not intended to be an endorsement.
 This document cannot be considered as a contractual document.
 Zodiac® Nautic continually strives to improve the quality of its products and as such reserves the right to modify or delete any model presented in this catalogue without prior notice and modify or improve the conception or definition of its products at any time, without any prior notification and no retroactive effect on the boats built previously.
 The boats photographed in this catalogue may have undergone changes. Such references are for identification only, and are not intended to be an endorsement.
 This document cannot be considered as a contractual document.
 Zodiac® Nautic continually strives to improve the quality of its products and as such reserves the right to modify or delete any model presented in this catalogue without prior notice and modify or improve the conception or definition of its products at any time, without any prior notification and no retroactive effect on the boats built previously.
 The boats photographed in this catalogue may have undergone changes. Such references are for identification only, and are not intended to be an endorsement.
 This document cannot be considered as a contractual document.
 Zodiac® Nautic continually strives to improve the quality of its products and as such reserves the right to modify or delete any model presented in this catalogue without prior notice and modify or improve the conception or definition of its products at any time, without any prior notification and no retroactive effect on the boats built previously.
 The boats photographed in this catalogue may have undergone changes. Such references are for identification only, and are not intended to be an endorsement.
 This document cannot be considered as a contractual document.
 Zodiac® Nautic continually strives to improve the quality of its products and as such reserves the right to modify or delete any model presented in this catalogue without prior notice and modify or improve the conception or definition of its products at any time, without any prior notification and no retroactive effect on the boats built previously.
 The boats photographed in this catalogue may have undergone changes. Such references are for identification only, and are not intended to be an endorsement.
 This document cannot be considered as a contractual document.
 Zodiac® Nautic continually strives to improve the quality of its products and as such reserves the right to modify or delete any model presented in this catalogue without prior notice and modify or improve the conception or definition of its products at any time, without any prior notification and no retroactive effect on the boats built previously.
 The boats photographed in this catalogue may have undergone changes. Such references are for identification only, and are not intended to be an endorsement.
 This document cannot be considered as a contractual document.
 Zodiac® Nautic continually strives to improve the quality of its products and as such reserves the right to modify or delete any model presented in this catalogue without prior notice and modify or improve the conception or definition of its products at any time, without any prior notification and no retroactive effect on the boats built previously.
 The boats photographed in this catalogue may have undergone changes. Such references are for identification only, and are not intended to be an endorsement.
 This document cannot be considered as a contractual document.
 Zodiac® Nautic continually strives to improve the quality of its products and as such reserves the right to modify or delete any model presented in this catalogue without prior notice and modify or improve the conception or definition of its products at any time, without any prior notification and no retroactive effect on the boats built previously.
 The boats photographed in this catalogue may have undergone changes. Such references are for identification only, and are not intended to be an endorsement.
 This document cannot be considered as a contractual document.
 Zodiac® Nautic continually strives to improve the quality of its products and as such reserves the right to modify or delete any model presented in this catalogue without prior notice and modify or improve the conception or definition of its products at any time, without any prior notification and no retroactive effect on the boats built previously.
 The boats photographed in this catalogue may have undergone changes. Such references are for identification only, and are not intended to be an endorsement.