

NAVY 3.0 Pod Drive Mounting Instruction

Step 1:

Drill three holes in the proper position as illustrated on the hull bottom (it is better to choose a relatively flat surface). Figure 1 shows the reference sizes of the three holes.

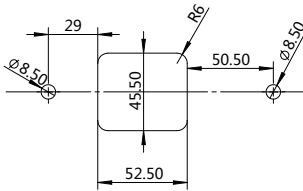


Figure 1

Step 2:

Insert the pod into the holes from below the hull bottom. Then lock the pod by flat washers and nuts as shown in Figure 2.

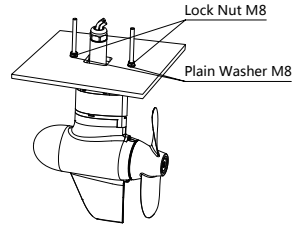


Figure 2

Step 3:

Connect the two cable terminals. Then align the two cable terminals and lock them by four screws.

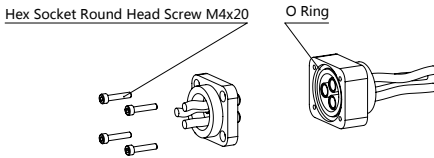


Figure 3

Step 4:

Place the driver board in an appropriate place and fix it.

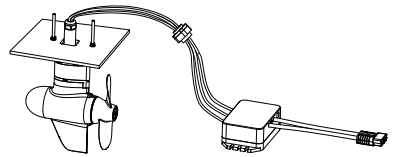


Figure 4

Power 3KW	Comparable Petrol Outboards 6HP	Weight 9KG	Brushless DC motor	Maintenance free
--------------	------------------------------------	---------------	-----------------------	---------------------

Test performance for 1x NAVY 3.0 Pod Drive with 1x NAVY Battery on a 20ft sailboat.*

	Speed (MPH / KMH)	Runtime (HH:MM)
1/4 Throttle	3.7 / 6.0	8:00
Full Throttle	8.0 / 13	1:00

*Depends on type of craft, boat, load weight, propeller, and weather conditions. Speed and range data table does not represent a legal guarantee of speed and range.