



Manual powder duster with 2-litre capacity, outlet tube and adjustable diffuser.



Advantages

- Lightweight and easy to use.
- Large filling opening for easy filling and emptying.
- Great stability and load settlement.
- Suitable for use with products of ecological origin (diatomaceous earth).



Technical information

| Technical information | POLMINOR |
|-----------------------|----------|
| USEFUL CAPACITY | 2 L |
| TOTAL CAPACITY | 2 L |
| GROSS WEIGHT | 0.92 Kg |
| NET WEIGHT | 0.70 Kg |
| WIDE FILLER OPENING | YES |

Logistics data

| Logistics data | POLMINOR |
|-----------------------|-------------------|
| CODE | 8.03.46 |
| EAN | 84.14685.30000.3 |
| CONDITIONING | 3 units |
| UNITS PER PALLET | 60 units |
| DIMENSIONS PER PALLET | 1200 X 800 X 1120 |

Functional information



Blower fastening designed for tool-free use



Large filling opening



Ergonomic handle for simple handling



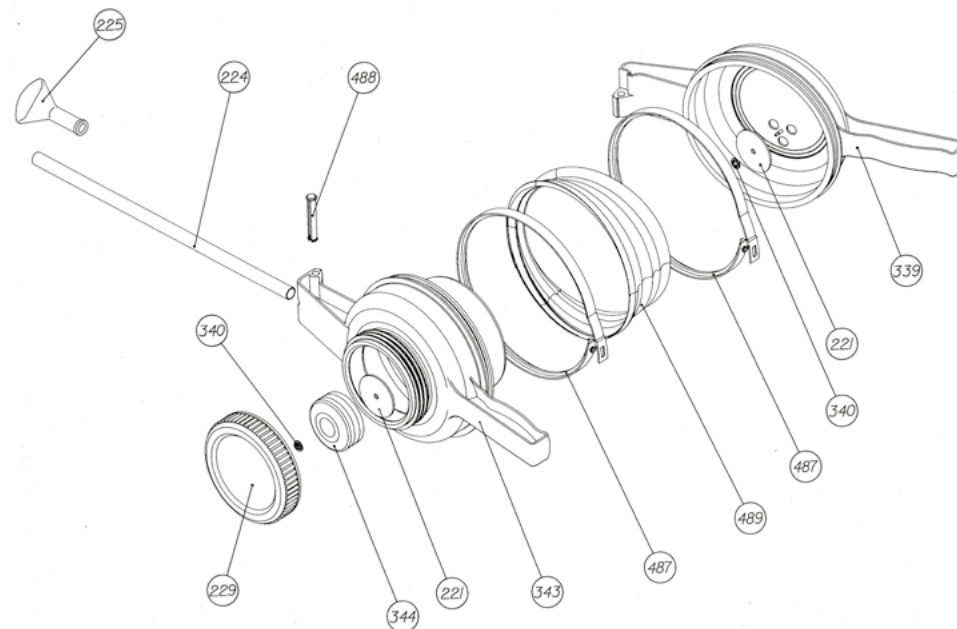
Adjustable outlet tube



Adjustable diffuser

SPARE PARTS

Extend the service life of your sprayer easily replacing parts.



| N. | COD. | Q | SPARE PARTS NAME |
|-----|---------------|---|--------------------|
| 221 | 8.03.06.307 | 2 | LOCK VALVE |
| 224 | 8.03.06.306 | 1 | OUTLET PIPE |
| 225 | 8.03.06.308 | 1 | DIFFUSOR |
| 229 | 8.42.20.317 | 1 | TANK LID |
| 339 | 8.03.46.302 | 1 | BELLOWS COVER |
| 340 | 2.19.99.073 | 2 | SERRATED WASHER |
| 343 | 8.03.46.301 | 1 | TANK |
| 344 | 8.03.06.303.1 | 1 | AIR DUCT |
| 487 | 8.03.46.310 | 2 | ATTACHING FLANGE |
| 488 | 8.03.46.311 | 1 | PIN |
| 489 | 8.03.46.612 | 1 | BELLOW |
| | 8.03.46.210 | 1 | INSTRUCTION SHEET |
| | 8.03.46.201 | 1 | POLMINOR PACKAGING |