

RK Design Forged Magnesium Wheel Specifications



MS90 20-INCH 1-piece, Forged Magnesium

Size	Flat Face	Concaved	
	Inset	Inset	
8.5J	-45 ~ +30	-49 ~ 0	
9.0J	-38 ~ +36	-42 ~ +6	
9.5J	-32 ~ +43	-36 ~ +12	
10.0J	-25 ~ +49	-29 ~ +18	
10.5J	-19 ~ +56	-23 ~ +24	
11.0J	-12 ~ +62	-17 ~ +30	
11.5J	-6 ~ +69	-11 ~ +36	
12.0J	+1 ~ +75	+4 ~ +42	
12.5J	+7 ~ +82	+3 ~ +48	
13.0J	+15 ~ +88	+9 ~ +54	



Matte Silver



Matte Carbon

MS90 19-INCH 1-piece, Forged Magnesium

Size	Flat Face		
	Inset		
8.0J	-40 ~ +21		
8.5J	-40 ~ +28		
9.0J	-40 ~ +34		
9.5J	-40 ~ +41		
10.0J	-30 ~ +47		
10.5J	-30 ~ +54		
11.0J	-30 ~ +60		
11.5J	-30 ~ +60		
12.0J	-20 ~ +73		
12.5J	-15 ~ +80		
13.0J	-10 ~ +86		



Standard Color	White, Silver, Matte Bronze, Matte Silver
	Matte Carbon, Matte Black, Black

Available PCD	5/100 - 5/130
Lug hole size	12 or 14mm

* Ask for 4-lug and 6-lug

* Ask for customized finish

RK Design Forged Magnesium Wheel Specifications



102S

18-INCH 1-piece, Forged Magnesium

Size	Inset		
8.5J	-70 ~ -14		
9.0J	-64 ~ -8		
9.5J	-58 ~ -2		
10.0J	-52 ~ +4		
10.5J	-46 ~ +10		
11.0J	-40 ~ +16		
11.5J	-34 ~ +22		
12.0J	-28 ~ +28		
12.5J	-22 ~ +34		
13.0J	-16 ~ +40		

製作可能なPCD	4/98、4/100、5/100
ラグホールサイズ	12 or 14mm



Matte Silver



WHT SIL MBR MSL MGM MBL BLK
White Silver Matte Bronze Matte Silver Matte Carbon Matte Black Black

Standard Color	White, Silver, Matte Bronze, Matte Silver Matte Carbon, Matte Black, Black
----------------	---

* Ask for customized finish

RK Design Forged Aluminum Wheel Specifications



A-0815

18-INCH 2-piece Forged Disc + Flowforming Barrel



SKB/K

Black Anodize and Black Alumite Rim



GMB/GG

Mate Brz and Matte Brz Alumite Rim

Size	STANDARD Adisk	DEEP RIM Odisk	BIG CALIPER Rdisk	
	INSET(Rim Depth)mm	INSET(Rim Depth)mm	INSET(Rim Depth)mm	
	1 mm increment	1 mm increment	1 mm increment	
8.0J	31(24) ~ -23(78)	40(24) ~ -14(78)	19(24) ~ -35(78)	
8.5J	38(24) ~ -30(92)	47(24) ~ -21(92)	26(24) ~ -42(92)	
9.0J	44(24) ~ -36(104)	53(24) ~ -27(104)	32(24) ~ -48(104)	
9.5J	50(24) ~ -42(116)	59(24) ~ -33(116)	38(24) ~ -54(116)	
10.0J	57(24) ~ -49(130)	66(24) ~ -40(130)	45(24) ~ -61(130)	
10.5J	63(24) ~ -55(142)	72(24) ~ -46(142)	51(24) ~ -67(142)	
11.0J	69(24) ~ -61(154)	78(24) ~ -52(154)	57(24) ~ -73(154)	
11.5J	64(36) ~ -68(168)	73(36) ~ -59(168)	59(36) ~ -80(168)	
PCD	4H-98 4H/5H-100~5H-120			

MSRP listed are price of standard disk and standard rim combination.

Center Disk Color Options

※ Add ¥20,000 for MSP & SKB



MSP※
Cut Clear



SKB※
Black Anodize



WHT
White



GLD
Gold



PG
Pratinum Gold



HPG
Titanium Gold



MHG
Matte Titanium



GM
Gunmetallic



GMB
Matte Bronze



MGS
Mg Silver



CF
Calm Silver



LS
Lightening Silver



FS2
Fine Silver



SIL
Silver



MSL
Matte Silver



MGM
Matte Carbon



MBL
Matte Black



BLK
Black

Outer Rim Color Options



STD
Buffed Alumite Rim

※Add ¥10,000 for 6 optional colors



F※
Cut Alumite Rim



H※
Brushed Rim



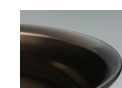
K※
Black Alumite Rim



KK※
Matte Black Alumite Rim



G※
Bronze Alumite Rim



GG※
Matte Bronze Alumite Rim

RK Design Forged Aluminum Wheel Specifications

RK Design 鍛造アルミホイール 価格表



PG/H
Platinum Gold/Brushed



MSP/STD
Cut Clear/Buffered Alumite

A-0815

17-INCH 2-piece Full Reverse, Forged Disc + Flowforming Barre

Size	STANDARD	DEEP RIM	BIG CALIPER	
	Adisk	Odisk	Rdisk	
	INSET(Rim Depth)mm	INSET(Rim Depth)mm	INSET(Rim Depth)mm	
	1 mm increment	1 mm increment	1 mm increment	
7.0J	36(7) ~ -4(47)	45(7) ~ 5(47)	24(7) ~ -16(47)	
7.5J	42(7) ~ -10(59)	51(7) ~ -1(59)	30(7) ~ -22(59)	
8.0J	48(7) ~ -16(71)	57(7) ~ -7(71)	36(7) ~ -28(71)	
8.5J	55(7) ~ -23(85)	64(7) ~ -14(85)	43(7) ~ -35(85)	
9.0J	61(7) ~ -29(97)	70(7) ~ -20(97)	49(7) ~ -41(97)	
PCD	4H-98 4H/5H-100~5H-120			

MSRP listed are price of standard disk and standard rim combination.

Center Disk Color Options

※ Add ¥20,000
for MSP & SKB



MSP*
Cut Clear



SKB*
Black Anodize



WHT
White



GLD
Gold



PG
Pratinum Gold



HPG
Titanium Gold



MHG
Matte Titanium



GM
Gunmetallic



GMB
Matte Bronze



MGS
Mg Silver



CF
Calm Silver



LS
Lightening Silver



FS2
Fine Silver



SIL
Silver



MSL
Matte Silver



MGM
Matte Carbon



MBL
Matte Black



BLK
Black

Outer Rim Color Options



STD
Buffered Alumite Rim

※Add ¥10,000 for
6 optional colors



F*
Cut Alumite Rim



H*
Brushed Rim



K*
Black Alumite Rim



KK*
Matte Black Alumite Rim



G*
Bronze Alumite Rim



GG*
Matte Bronze Alumite Rim

RK Design Forged Aluminum Wheel Specifications



Outer Rim Color Options

Standard Rim



Brushed Alumite Rim
Code : STD

Optional Rim : add \20,000/pc



Cut Alumite Rim
Code : F



Black Alumite Rim
Code : K



Bronze Alumite Rim
Code : G



Brushed Rim
Code : H



Matte Black Alumite Rim
Code : KK



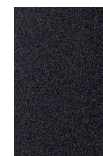
Matte Bronze Alumite Rim
Code : GG

Center Disk Color Options

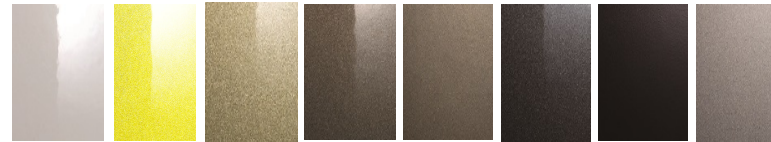
Optional Color : + \10,000/pc



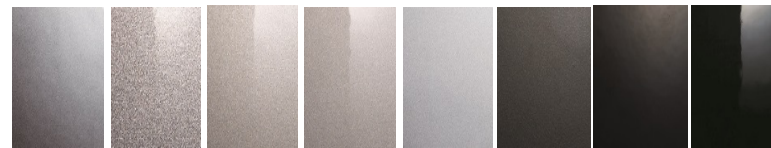
MSP*
Cut Clear



SKB*
Black Anodize



WHT	GLD	PG	HPG	MHG	GM	GMB	MGS
White	Gold	Pratinum Gold	Titanium Gold	Matte Titanium	Gunmetallic	Matte Bronze	Mg Silver



CF	LS	FS2	SIL	MSL	MGM	MBL	BLK
Calm Silver	Lightening Silver	Fine Silver	Silver	Matte Silver	Matte Carbon	Matte Black	Black