



ORACLE LIGHTING

BRONCO SIDE MIRRORS

ORACLE PART #5894-001

INSTALLATION GUIDE

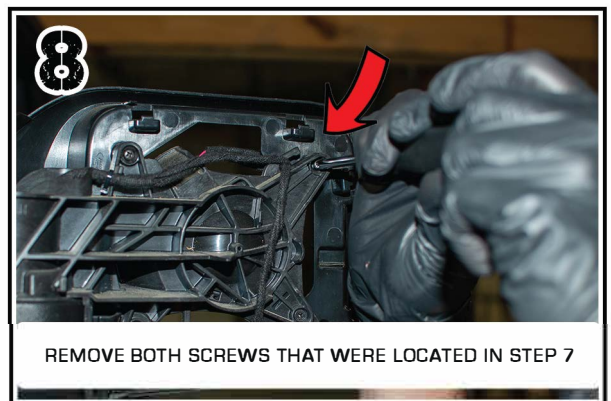
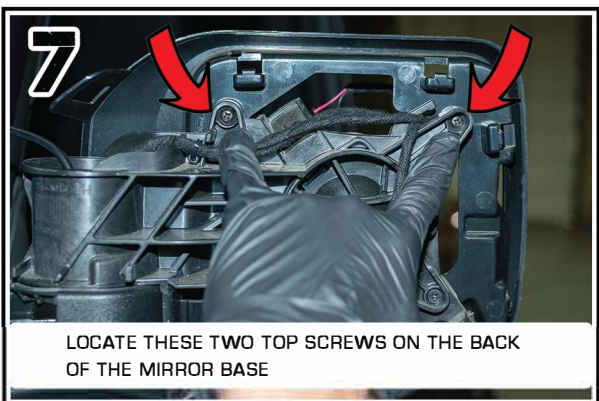
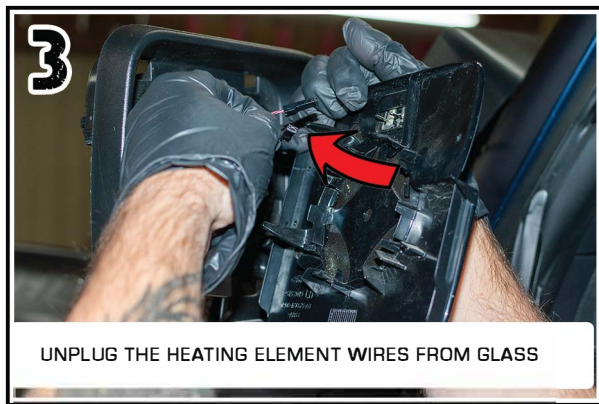
TOOLS NEEDED:
PHILLIPS HEAD SCREWDRIVER
PANEL TOOL
T-25 TORX DRIVER
WIRE CRIMPS AND STRIPPERS

STEP: 1

WATCH THE VIDEO
SCAN QR OR VISIT:



VIMEO.COM/771725082/5976EB83AD





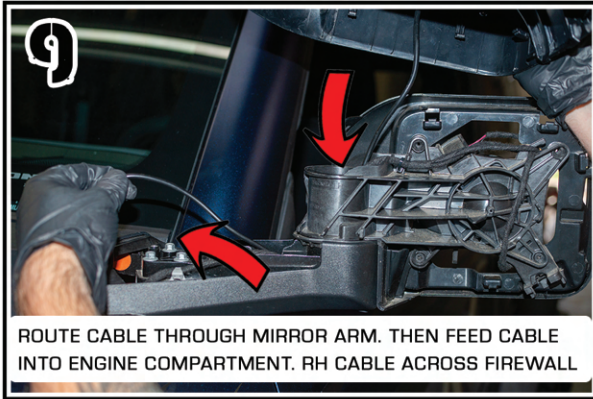
ORACLE LIGHTING

BRONCO SIDE MIRRORS

ORACLE PART #5894-001

INSTALLATION GUIDE

TOOLS NEEDED:
PHILLIPS HEAD SCREWDRIVER
PANEL TOOL
T-25 TORX DRIVER
WIRE CRIMPS AND STRIPPERS



ROUTE CABLE THROUGH MIRROR ARM. THEN FEED CABLE INTO ENGINE COMPARTMENT. RH CABLE ACROSS FIREWALL



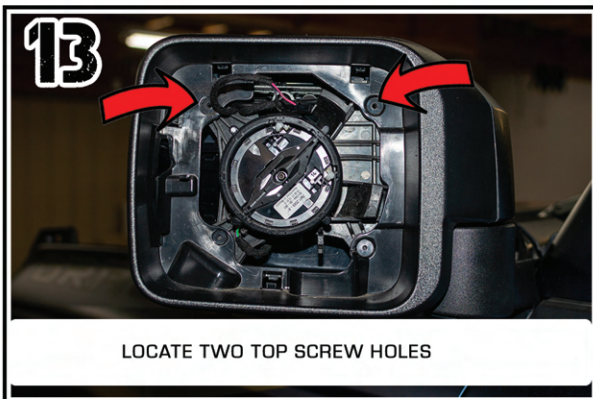
BEGIN INSTALLING MIRROR CAP. THIS END FIRST. BE SURE TO CLEAR ARM GASKET



SNAP ORACLE MIRROR CAP INTO PLACE



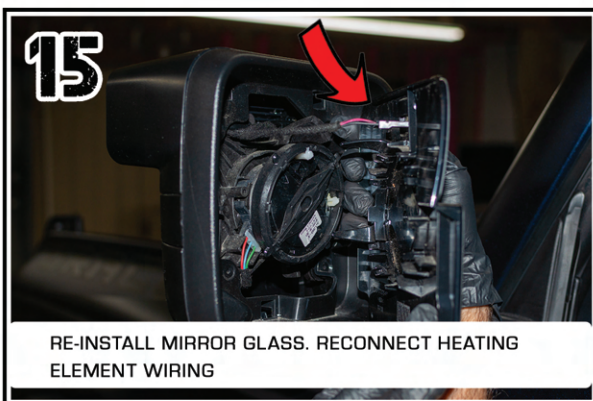
LOCATE TWO OF INCLUDED PHILLIPS SCREWS



LOCATE TWO TOP SCREW HOLES



INSTALL TWO PROVIDED PHILLIPS SCREWS



RE-INSTALL MIRROR GLASS. RECONNECT HEATING ELEMENT WIRING



CONNECT WIRES FACTORY AUX WIRE OR SWITCH OF YOUR CHOICE