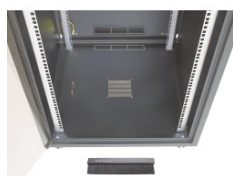


DATASHEET

19" Network Cabinet OFFICE, 600 x 600 mm, RAL9005



Description

19" network cabinet according to DIN41494
 Steel sheet housing, self-supporting, completely pre-assembled, self-ventilated
 Inside front and rear 4 x 19" profiles (2 front, 2 rear-sided), galvanised, step-less depth-adjustable
 Front door full glass, 1-part (thickness 4 mm)
 Front door with 1-point latch-locking
 Door stop possible left or right-sided
 Bottom and rear with pre-punched openings for cable entry
 Roof and bottom prepared for accommodation of 1 x fan unit (Art.-No. 691664)
 Internal earthing of all cabinet sections
 Paint finish RAL7035, light grey / RAL9005, jet black
 Max. load 600 x 600 mm 12U 30kg, 15U 38kg, 18U 45kg
 Protection degree IP20
 Included in delivery: 1 x brush, 4 x leveling feet M8, 2 x key
 Delivery in transport packaging on disposable pallet

General data

Type of front door	Full glass door 1-part
Type of back door	Rear wall
Mounting level	Front and rear
Modular spacing	482,6 mm (19 inch)
Type of profile rail	L-shaped
Number of doors	1

This datasheet was created automatically on 21-04-2020 . Technical changes reserved.



DATASHEET

19" Network Cabinet OFFICE, 600 x 600 mm, RAL9005

General data

Type of ventilation	Passive
With roof plate	True
With earthing	True
With front door	True
With backside door	True
With sidewall	True
With socket	False
Material	Steel
Type of surface	With powder coating
Degree of protection (IP)	IP20
Toolless depth adjustment	False
Demountable	False

Available variants

Article no.	Title	Number of height units	Width	Depth	Height	Colour	RAL-number
OFF-1266TS.V1RW	Network Cabinet OFFICE 12U, 600x600 mm, RAL9005	12 HE	600 mm	600 mm	604 mm	Black	9005
OFF-1566TS.V1RW	Network Cabinet OFFICE 15U, 600x600 mm, RAL9005	15 HE	600 mm	600 mm	737 mm	Black	9005
OFF-1866TS.V1RW	Network Cabinet OFFICE 18U, 600x600 mm, RAL9005	18 HE	600 mm	600 mm	871 mm	Black	9005

accessory

OFF-ROL01	Castor Set for OFFICE
OFF-ARB01	Set for Raising the Worktop
OFF-ARB66.TS	Worktop for OFFICE

spare part

OFF-TUR126V1	Front Door for OFFICE W=600, Full Glass, 1-Part, Latch
OFF-PRO12	19" Profile Rails for OFFICE, Set 2 Pieces

This datasheet was created automatically on 21-04-2020 . Technical changes reserved.

