

BRAKED AXLE 900 KG BASIC

100 x 4



TECHNOLOGY

Model:	BASIC	Suspension:	Hexagonal rubber suspension
Axle type:	B 850-5	Swing arm:	160 mm
Axle load:	SA 900 kg	Wheel connection:	100x4
	TA 1,600 kg	Wheel bearing:	Compact bearing
Wheel brake:	1637	Rim centre hole:	Min. 57 mm



SAP: EURO1ACHSE GRM GLL EA 900

OHF in mm	BC in mm	Single axle		Tandem axle				38	-	30	10
		Wheel bolts		Front axle wheel bolts		Rear axle wheel bolts					
		Ball M 12x1.5 Axle cpl.	Taper M 12x1.5 Axle cpl.	Ball M 12x1.5 Axle cpl.	Taper M 12x1.5 Axle cpl.	Ball M 12x1.5 Axle cpl.	Taper M 12x1.5 Axle cpl.				
1,250	800	200 150 01	200 150 02	200 150 03	200 150 04	200 150 05	200 150 06	38	-	30	10
1,300	850	200 151 01	200 151 02	200 151 03	200 151 04	200 151 05	200 151 06	38	-	30	10
1,350	900	200 152 01	200 152 02	200 152 03	200 152 04	200 152 05	200 152 06	38	-	30	10
1,400	950	200 153 01	200 153 02	200 153 03	200 153 04	200 153 05	200 153 06	38	-	30	10
1,450	1,000	244 009 01	244 009	244 009 03	244 009 04	244 009 05	244 009 06	39	-	30	10
1,490	1,040	200 155 01	200 155 02	200 155 03	200 155 04	200 155 05	200 155 06	39	-	30	10
1,520	1,070	200 156 01	200 156 02	200 156 03	200 156 04	200 156 05	200 156 06	39	-	30	10
1,550	1,100	244 010 01	244 010	244 010 03	244 010 04	244 010 05	244 010 06	39	-	30	10
1,600	1,150	200 158 01	200 158 02	200 158 03	200 158 04	200 158 05	200 158 06	39	-	30	10
1,650	1,200	244 011 01	244 011	244 011 03	244 011 04	244 011 05	244 011 06	40	-	30	10
1,670	1,220	200 160 01	200 160 02	200 160 03	200 160 04	200 160 05	200 160 06	40	-	30	10
1,700	1,250	244 012 01	244 012	244 012 03	244 012 04	244 012 05	244 012 06	40	-	30	10
1,760	1,310	200 162 01	200 162 02	200 162 03	200 162 04	200 162 05	200 162 06	40	-	30	10
1,800	1,350	200 163 01	200 163 02	200 163 03	200 163 04	200 163 05	200 163 06	40	-	30	10
1,850	1,400	244 013 01	244 013	244 013 03	244 013 04	244 013 05	244 013 06	41	-	30	10
1,900	1,450	200 165 01	200 165 02	200 165 03	200 165 04	200 165 05	200 165 06	41	-	30	10
1,950	1,500	244 014 01	244 014	244 014 03	244 014 04	244 014 05	244 014 06	41	-	30	10
1,980	1,530	200 167 01	200 167 02	200 167 03	200 167 04	200 167 05	200 167 06	41	-	30	10
2,000	1,550	244 015 01	244 015	244 015 03	244 015 04	244 015 05	244 015 06	42	-	30	10
2,030	1,580	200 169 01	200 169 02	200 169 03	200 169 04	200 169 05	200 169 06	42	-	30	10
2,075	1,625	200 170 01	200 170 02	200 170 03	200 170 04	200 170 05	200 170 06	42	-	30	10
2,120	1,670	200 171 01	200 171 02	200 171 03	200 171 04	200 171 05	200 171 06	42	-	30	10
2,150	1,700	200 172 01	200 172 02	200 172 03	200 172 04	200 172 05	200 172 06	43	-	30	10
2,200	1,750	200 173 01	200 173 02	200 173 03	200 173 04	200 173 05	200 173 06	43	-	30	10
2,250	1,800	200 174 01	200 174 02	200 174 03	200 174 04	200 174 05	200 174 06	43	-	30	10
2,300	1,850	200 175 01	200 175 02	200 175 03	200 175 04	200 175 05	200 175 06	43	-	30	10

SCOPE OF DELIVERY

- || Single axle adapter bracket welded onto top hat profile (single axle and tandem adapter bracket)
- || Compensation profile for single axle supplied
- || Bowden cables loose
- || Wheel bolts loose

Separate order for tandem

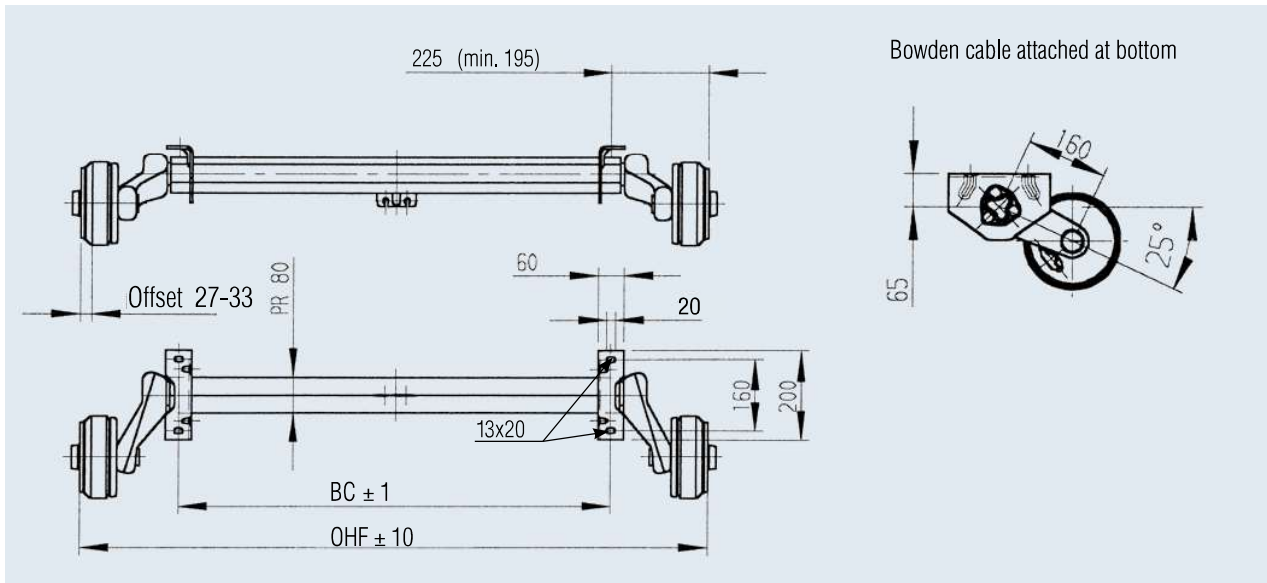
- || Bolt-on tandem adapter bracket 249 236
- || Tandem compensation 238 576

SURFACE TREATMENT

- || Axle profile hot-dip galvanised
- || Wheel brake galvanised

ACCESSORIES

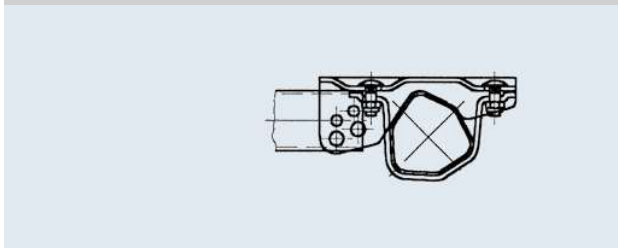
- || Shock absorber (see table of contents)



Accessories for bolt-on drawbar connection profiles

Ø 70 / Ø 88.9 / □ 60 / □ 70 / □ 100

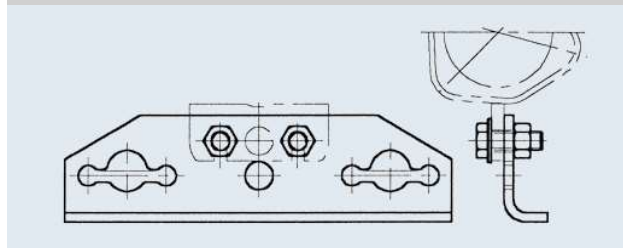
Part no. **247 853**



Accessories for tandem

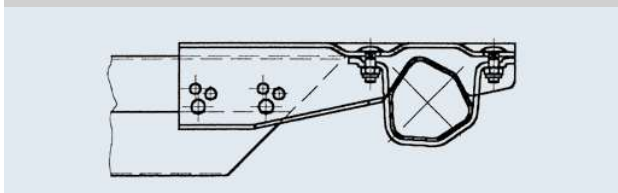
Bolt-on tandem adapter bracket

Part no. **249 236**



101 VB / 161 VB

Part no. **249 116**



Tandem compensation

Part no. **238 576**

