

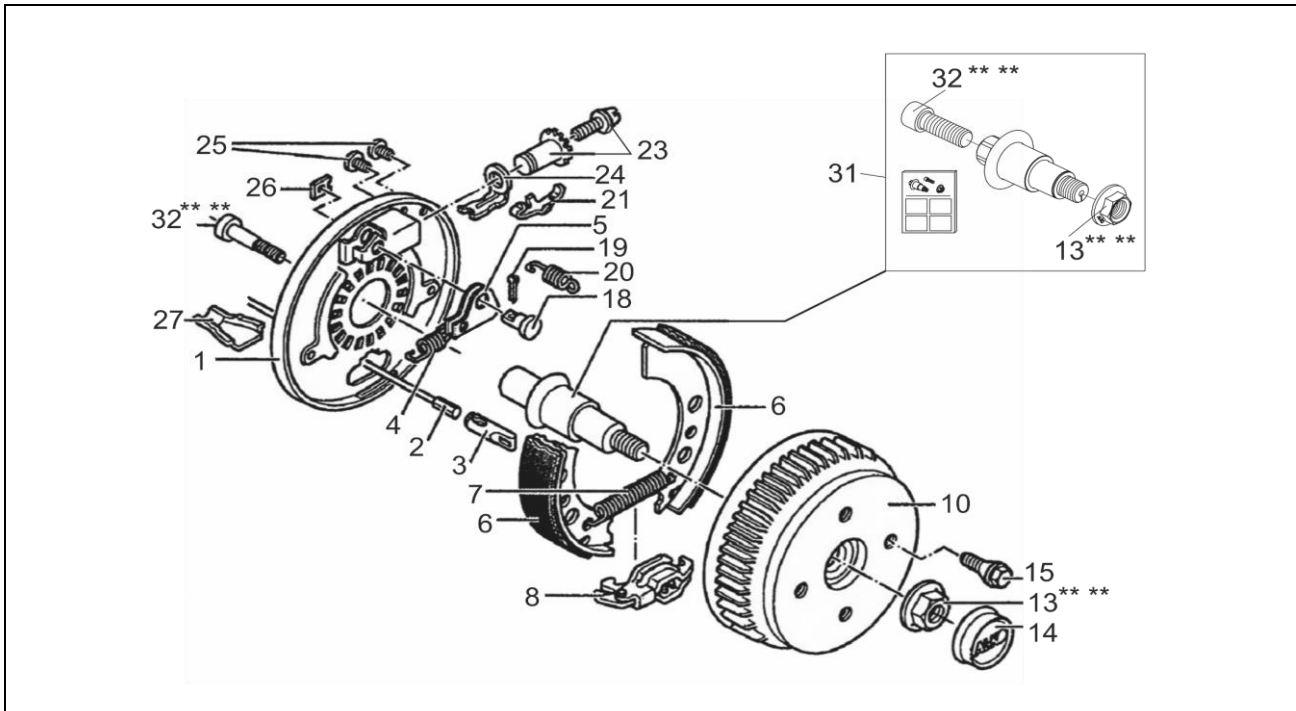
WHEEL BRAKE 1637/EURO1(45°) TO 500 kg M22

ETI- No. 811944

(Specify the order with the ETI No.)

AL-KO

Spare Parts



Item	Description	Part No.
1	BRAKING PLATE WELDED LEFT	571950
	BRAKING PLATE WELDED RIGHT	571951
2	BOWDEN CABLE HULL LENTH:	350 247281
		530 247282
		770 247283
		890 247284
		1020 247285
		1130 247286
		1320 247287
		1430 247288
1620 247289		
1790 247290		
3	CONNECTION EYE	604262
4	TENSION SPRING LEFT	2188870001
	TENSION SPRING RIGHT	372805
5	AUTO-REVERSE LEVER LEFT	384308
	AUTO-REVERSE LEVER RIGHT	384309
6	SET BRAKE JAW	1213888
7	TENSION SPRING	2182150003
8	SPREAD HINGE LOCK	570666
10	BRAKE DRUM CPL	98x4/M12x1,5 623748
		98x4/M12x1,25 1361700
		100x4/M12x1,5 623749
		101,6x4/M10x1,25 646332
		112x5/M12x1,5 623750
		114,3x5/M12x1,5 1362576
		105x4/M12x1,5 1370886
130x4/M14x1,5 1370516		

Item	Description	Part No.
10	ET-SET BEARING-CIRCLIP-FLANGE NUT	1224800
13	FLANGE NUT	581200
14	CAP	581197
15	WHEEL BOLT	
	CONUS M12x1,5	2081670018
	SPHERIC M12x1,5	2081670020
	SPHERIC M12x1,5(R13)	372138
18	BERING BOLT	368651
19	SPLINT 4x20 DIN 94	700192
20	COMPRESSION SPRING	2088800003
21	FLAT SPRING	581879
23	ADJUSTING BOLT AND ADJUSTING NUT	21873708
24	COMPRESSION BINDER	581878
25	STOPPER 10x13x11	373245
26	COVER PLATE	2382610002
27	BOWL	371387
31	ET-SET STUB AXLE Ø30 BEND 0°15' M22	1732677
32	CYLINDER BOLT WITH HEXAGON SOCKET DIN 912-M22X60 (M22)	706900

+ THE CENTRE OF ROTATION OF THE BRAKE LEVER MUST BE FIXED ON THE SAME SIDE AS THE BOLT OF THE AUTO-REVERSE.
 ++ THE OPEN SIDE OF THE CONNECTION EYE FOR THE BOWDEN CABLE MUST SHOW TO THE CENTRE OF ROTATION OF THE BRAKE LEVER.

*** FOR SAFETY REASONS: SELF-LOCKING NUT AND SCREW WITH CHEMICAL SELF-LOCKING MUST BE USED ONCE.
 AFTER UNTIGHTEN ALWAYS USE A NEW SPARE.

THE RETAIL OF INDIVIDUAL BRAKE SHOES IS NOT PERMITTED BY EU DIRECTIVE FROM 1st OF OCTOBER 2002.
 ATTENTION: THE SET INCLUDES FOUR BRAKE SHOES AND THE APPENDANT TENSION SPRINGS, PRESSURE SPRINGS AND COVER PLATES.

provided	ETI-No.	changed	Change No.	Reason of the change	Revisions-No.
9.10.18ÖJ	811944_en		FREIGABE		A