

# BRAKED AXLE 900 KG BASIC

## 112x5



### TECHNOLOGY

Model:	BASIC	Suspension:	Hexagonal rubber suspension
Axle type:	B 850-5	Swing arm:	160 mm
Axle load:	SA 900 kg	Wheel connection:	112x5
	TA 1,600 kg	Wheel bearing:	Compact bearing
Wheel brake:	1637	Rim centre hole:	Min. 57 mm



SAP: EURO1ACHSE GRM GLL EA 900

OHF in mm	BC in mm	Single axle		Tandem axle				38	-	30	10
		Wheel bolts		Front axle wheel bolts		Rear axle wheel bolts					
		Ball M 12x1.5 Axle cpl.	Taper M 12x1.5 Axle cpl.	Ball M 12x1.5 Axle cpl.	Taper M 12x1.5 Axle cpl.	Ball M 12x1.5 Axle cpl.	Taper M 12x1.5 Axle cpl.				
1,250	800	200 068 01	200 068 02	200 068 03	200 068 04	200 068 05	200 068 06	38	-	30	10
1,300	850	200 069 01	200 069 02	200 069 03	200 069 04	200 069 05	200 069 06	38	-	30	10
1,350	900	200 070 01	200 070 02	200 070 03	200 070 04	200 070 05	200 070 06	38	-	30	10
1,400	950	200 071 01	200 071 02	200 071 03	200 071 04	200 071 05	200 071 06	38	-	30	10
1,450	1,000	244 016	244 016 02	244 016 03	244 016 04	244 016 05	244 016 06	39	-	30	10
1,490	1,040	200 072 01	200 072 02	200 072 03	200 072 04	200 072 05	200 072 06	39	-	30	10
1,520	1,070	200 073 01	200 073 02	200 073 03	200 073 04	200 073 05	200 073 06	39	-	30	10
1,550	1,100	244 017	244 017 02	244 017 03	244 017 04	244 017 05	244 017 06	39	-	30	10
1,600	1,150	200 074 01	200 074 02	200 074 03	200 074 04	200 074 05	200 074 06	40	-	30	10
1,650	1,200	244 018	244 018 02	244 018 03	244 018 04	244 018 05	244 018 06	40	-	30	10
1,670	1,220	200 075 01	200 075 02	200 075 03	200 075 04	200 075 05	200 075 06	40	-	30	10
1,700	1,250	244 019	244 019 02	244 019 03	244 019 04	244 019 05	244 019 06	40	-	30	10
1,760	1,310	200 076 01	200 076 02	200 076 03	200 076 04	200 076 05	200 076 06	41	-	30	10
1,800	1,350	200 077 01	200 077 02	200 077 03	200 077 04	200 077 05	200 077 06	41	-	30	10
1,850	1,400	244 020	244 020 02	244 020 03	244 020 04	244 020 05	244 020 06	41	-	30	10
1,900	1,450	200 078 01	200 078 02	200 078 03	200 078 04	200 078 05	200 078 06	41	-	30	10
1,950	1,500	244 021	244 021 02	244 021 03	244 021 04	244 021 05	244 021 06	41	-	30	10
1,980	1,530	200 079 01	200 079 02	200 079 03	200 079 04	200 079 05	200 079 06	42	-	30	10
2,000	1,550	244 022	244 022 02	244 022 03	244 022 04	244 022 05	244 022 06	42	-	30	10
2,030	1,580	200 080 01	200 080 02	200 080 03	200 080 04	200 080 05	200 080 06	42	-	30	10
2,075	1,625	200 081 01	200 081 02	200 081 03	200 081 04	200 081 05	200 081 06	42	-	30	10
2,120	1,670	200 082 01	200 082 02	200 082 03	200 082 04	200 082 05	200 082 06	42	-	30	10
2,150	1,700	200 083 01	200 083 02	200 083 03	200 083 04	200 083 05	200 083 06	43	-	30	10
2,200	1,750	200 084 01	200 084 02	200 084 03	200 084 04	200 084 05	200 084 06	43	-	30	10
2,250	1,800	200 085 01	200 085 02	200 085 03	200 085 04	200 085 05	200 085 06	43	-	30	10
2,300	1,850	200 086 01	200 086 02	200 086 03	200 086 04	200 086 05	200 086 06	43	-	30	10

**SCOPE OF DELIVERY**

- ▮ Single axle adapter bracket welded onto top hat profile (single axle and tandem adapter bracket)
- ▮ Compensation profile for single axle supplied
- ▮ Bowden cables loose
- ▮ Wheel bolts loose

**Separate order for tandem**

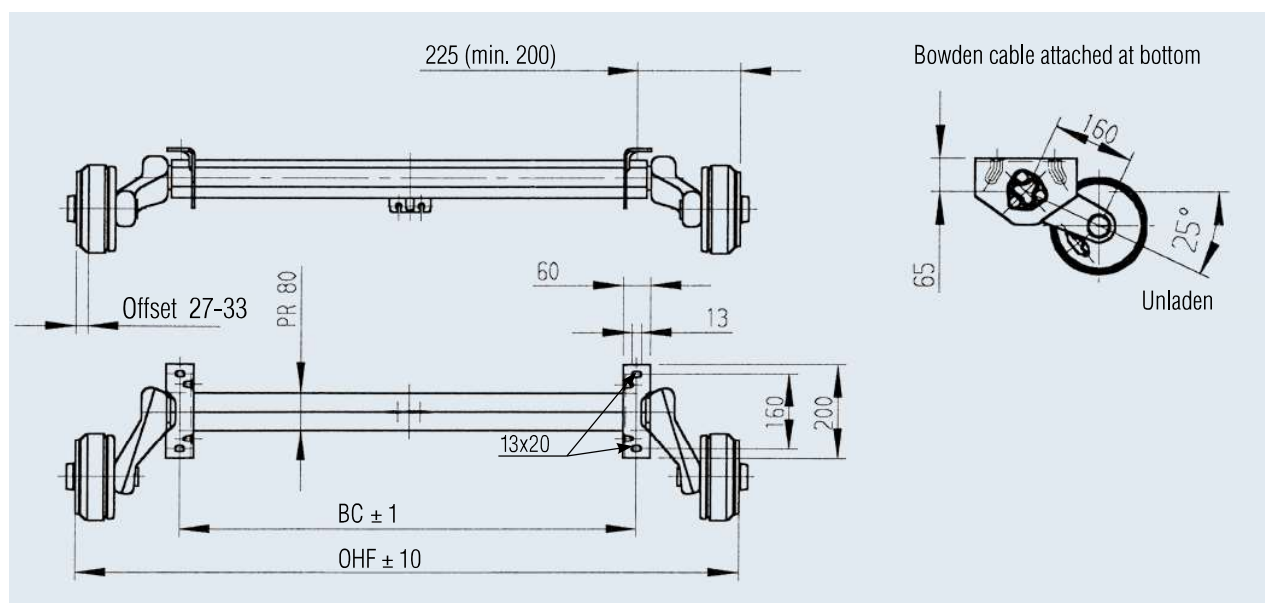
- ▮ Bolt-on tandem adapter bracket 249 236
- ▮ Tandem compensation 238 576

**SURFACE TREATMENT**

- ▮ Axle profile hot-dip galvanised
- ▮ Wheel brake galvanised

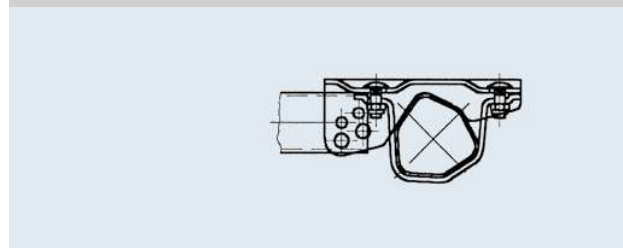
**ACCESSORIES**

- ▮ Shock absorber  
(see table of contents)

**Accessories for bolt-on drawbar connection profiles**

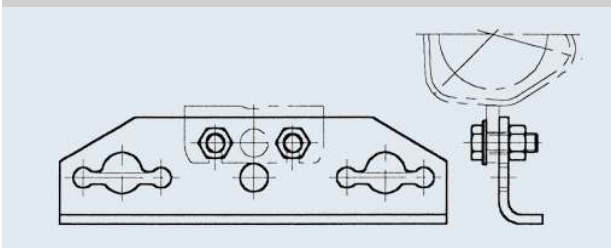
Ø 70 / Ø 88.9 / □ 60 / □ 70 / □ 100

Part no. **247 853**

**Accessories for tandem**

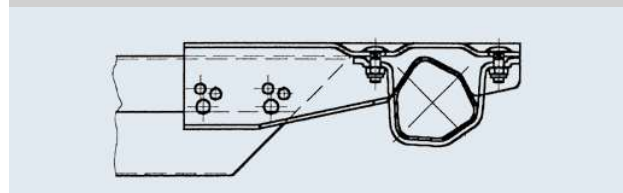
Bolt-on tandem adapter bracket

Part no. **249 236**



101 VB / 161 VB

Part no. **249 116**



Tandem compensation

Part no. **238 576**

